

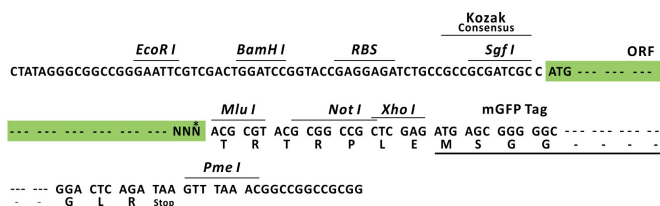
## Product datasheet for RC227756L2

### OSBPL5 (NM\_001144063) Human Tagged Lenti ORF Clone

#### Product data:

Product Type:	Expression Plasmids
Product Name:	OSBPL5 (NM_001144063) Human Tagged Lenti ORF Clone
Tag:	mGFP
Symbol:	OSBPL5
Synonyms:	OBPH1; ORP5
Mammalian Cell Selection:	None
Vector:	pLenti-C-mGFP (PS100071)
E. coli Selection:	Chloramphenicol (34 ug/mL)
ORF Nucleotide Sequence:	The ORF insert of this clone is exactly the same as(RC227756).
Restriction Sites:	SgfI-MluI
Cloning Scheme:	

Cloning sites used for ORF Shuttling:



\* The last codon before the Stop codon of the ORF.

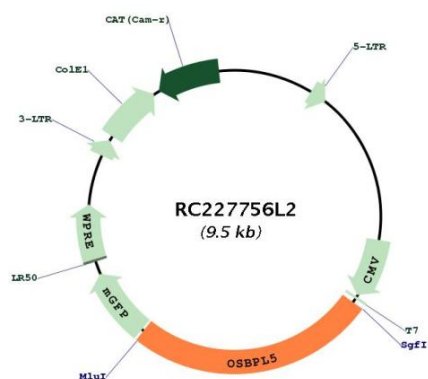
ACCN:	NM_001144063
ORF Size:	2433 bp



[View online »](#)

<b>OTI Disclaimer:</b>	The molecular sequence of this clone aligns with the gene accession number as a point of reference only. However, individual transcript sequences of the same gene can differ through naturally occurring variations (e.g. polymorphisms), each with its own valid existence. This clone is substantially in agreement with the reference, but a complete review of all prevailing variants is recommended prior to use. <a href="#">More info</a>
<b>OTI Annotation:</b>	This clone was engineered to express the complete ORF with an expression tag. Expression varies depending on the nature of the gene.
<b>Components:</b>	The ORF clone is ion-exchange column purified and shipped in a 2D barcoded Matrix tube containing 10ug of transfection-ready, dried plasmid DNA (reconstitute with 100 ul of water).
<b>Reconstitution Method:</b>	<ol style="list-style-type: none"> <li>1. Centrifuge at 5,000xg for 5min.</li> <li>2. Carefully open the tube and add 100ul of sterile water to dissolve the DNA.</li> <li>3. Close the tube and incubate for 10 minutes at room temperature.</li> <li>4. Briefly vortex the tube and then do a quick spin (less than 5000xg) to concentrate the liquid at the bottom.</li> <li>5. Store the suspended plasmid at -20°C. The DNA is stable for at least one year from date of shipping when stored at -20°C.</li> </ol>
<b>RefSeq:</b>	<a href="#">NM_001144063.1</a>
<b>RefSeq ORF:</b>	2436 bp
<b>Locus ID:</b>	114879
<b>UniProt ID:</b>	<a href="#">Q9H0X9</a>
<b>Cytogenetics:</b>	11p15.4
<b>MW:</b>	90.6 kDa
<b>Gene Summary:</b>	This gene encodes a member of the oxysterol-binding protein (OSBP) family, a group of intracellular lipid receptors that play a key role in the maintenance of cholesterol balance in the body. Most members contain an N-terminal pleckstrin homology domain and a highly conserved C-terminal OSBP-like sterol-binding domain. This gene has been shown to be imprinted, with preferential expression from the maternal allele only in placenta. Transcript variants encoding different isoforms have been identified. [provided by RefSeq, Oct 2010]

## Product images:



Circular map for RC227756L2