

Product datasheet for **RC227741**

ZNF652 (NM_001145365) Human Tagged ORF Clone

Product data:

| | |
|---------------------------|--|
| Product Type: | Expression Plasmids |
| Product Name: | ZNF652 (NM_001145365) Human Tagged ORF Clone |
| Tag: | Myc-DDK |
| Symbol: | ZNF652 |
| Mammalian Cell Selection: | Neomycin |
| Vector: | pCMV6-Entry (PS100001) |
| E. coli Selection: | Kanamycin (25 ug/mL) |



[View online »](#)

ORF Nucleotide Sequence:

>RC227741 representing NM_001145365
 Red=Cloning site Blue=ORF Green=Tags(s)

TTTTGTAATACGACTCACTATAGGGCGGCCGGAATTCGTCGACTGGATCCGGTACCGAGGAGATCTGCC
 GCC**CGGATCGCC**

ATGAGCCACACAGCCAGTTCCTTGTGAGGAGCTGGTTGAAAACGTGCTGTGCATGTAGCAGGAATGGCAC
 AAGAAGATAGCCGTCGTGGTCAAGTGCCATCTTCTTTTATCATGGTGCCAAACCAAGAACTTGACCTGTC
 CACCAAAGTGTACAAAAGGGAATCAGGAAGTCCTTATTCTGTGTTAGTGACACCAAGATGAGCAAACCG
 CATCTCCATGAAACAGAAGAACAGCCATATTTACGGGAGACAAGAGCAGTGTCTGACGTGCATGCTGTTA
 AGGAAGACCGGGAGAATTCTGATGACACAGAGGAGGAAGGAAGAAGTCTTTACAAAAGGGAGCAGAT
 CATAGTGGAGGTAACCTTAATAATCAAACATTAATGTATCTAAAGGGGAAAAGGGTGTCTCTTCTCAG
 TCCAAAGAGACTCCTGTTCTTAAGACAAGCAGTGAGGAGGAAGAGGAAGAGAGTGAAGGAAGGCCACAG
 ATGACAGCAATGACTATGGAGAGAATGAAAAGCAGAAGAAAAAGGAGAAGATAGTAGAGAAAGTCAGCGT
 TACACAAAAGGAGAACCAGGAGAGCTGCCTCTGTTGCCGAGCTACCACTCCCCTACTCCCAGAACTACA
 AGAGGTCGTAGGAAGAGTGTAGAGCCACCTAAGCGTAAGAAGCGGCCACAAAGGAGCCAAAGCACCAG
 TCCAGAAAGCTAAGTGTGAAGAGAAAGAGACTCTGACCTGTGAGAAGTGCCCCAGGGTATTTAACTCG
 CTGGTACTGGAGAAGCAGTGAACGTTACTCATAGGCGCATGCAGATTTGTGATAAATGTGGCAAGAAG
 TTTGTCCTGGAAAGTGAGCTGTCCCTTACCAGCAAACAGACTGTGAAAAAACATTCAGTGTGTTTCTT
 GTAACAAATCGTTCAAGAAACTCTGGTCCCTTCAATGAACATATCAAGATCGTCCATGGATATGCAGAAA
 GAAATTTTCTGTGAAATTTGTGAGAAGAAATCTATACCATGGCTCATGTGCGGAAACACATGGTTGCA
 CACAAAAAGACATGCCATTTACATGCGAAACCTGTGAAAAATCATTCAAACGCAGTATGCTACTCAAGG
 TGCACTCCTTGCAGCATTCTGGAGAGAAGCCCTTTAGATGCGGAAACTGTGACGAAAGGTTTCAGTACAA
 GTACCAGCTACGCTCCACATGAGCATTCAATTGGGCACAAACAGTTTCATGTGCCAGTGGTGTGGCAAG
 GATTTCAACATGAAGCAGTACTTCGACGAACACATGAAAAACACACTGGAGAGAAACCTTTATCTGTG
 AAATCTGTGGCAAAGCTTACCAGCCGCCCAACATGAAGAGACACCGCAGAACTCACACAGGCGAGAA
 GCCCTATCCATGTGATGTGTGTGGCCAGCGTTCCGCTTCTCGAACATGCTTAAGGCCACAAAGGAGAAG
 TGCTTTCCGGTGACCAGCCCGTGAATGTGCCACCTGCTGTCCAGATCCCACTTACAACCTCCCCAGCCA
 CCCCAGTTCCTTCTGTGGTGAACACAGCCACAACCCCAACCCCTCCAATCAATATGAATCCTGTAAGCAC
 TCTTCCCCCTCGGCCATCCCCACCCCTTCTCACACCTGCACATCCACCCACACCCCTCACCACCCACAC
 CACCTTCCATCCCTCCAGTCCCTCACCTCCCGCCACCTCCAGCTCTCTTAAGAGTGAGCCTTTAATC
 ATAGAGGCCAGAGTGAGGACAACCTTCTCGGGCACCTGGCAGAGAAGAAGTTCAGCACAGCATCAT

ACGCGTACGCGGCCGCTCGAGCAGAAACTCATCTCAGAAGAGGATCTGGCAGCAAATGATATCCTGGATT
 ACAAGGATGACGACGATAAGGTTTAA

Protein Sequence:

>RC227741 representing NM_001145365
 Red=Cloning site Green=Tags(s)

MSHTASSCQELVENCAVHVAGMAQEDSRGQVPSFYGANQELDLSTKVYKRESGSPYSVLVDTKMSKP
 HLHETEEQPYFRETRAVSDVHAVKEDRENSDDTEEEEEVSYKREQIIVEVNLNNQTLNVSKEGKVSSQ
 SKETPVLKTSSEEEEESEEEATDDSN DYGENEKQKKKEKIVEKVSVTQRRTRRAASVAAATTSPTPRTT
 RGRRKSVPEPPKRKRATKEPKAPVQKAKCEEKETLTCEKCPRVFNTRWYLEKHMNVTHRRMQICDKCGKK
 FVLESEL SLHQQTDCENIQCVSNKSFKKLWSLHEHIKIVHGYAEKKSCEICEKFFYTMHVVRKHMVA
 HTKDMFPF TCETCGKSFKRSMKLVHSLQHSGEKPFRCENC DERFYKYQLRSHMSIHIHGHQFMCQWCGK
 DFNMKQYFDEHMKTHTEKPFICEICGKSFTSRPNMKRHRRTHTGEKPYPCDVCGQRF RFSNMLKAHKEK
 CFRVTSVNVPPAVQIPLTTS PATPVPSVVNTATPTPPINMNPVSTLPPRP IHPHSHLHIHPHPPHHP
 HLP IPPVPHLPPPPALFKSEPLNHRGQSEDNFLRHLAEKNSSAQHH

TRTRPLEQKLISEEDLAANDILDYKDDDDKV

Chromatograms:

https://cdn.origene.com/chromatograms/mg2920_c11.zip

Restriction Sites: SgfI-MluI

Cloning Scheme:



ACCN: NM_001145365

ORF Size: 1818 bp

OTI Disclaimer: The molecular sequence of this clone aligns with the gene accession number as a point of reference only. However, individual transcript sequences of the same gene can differ through naturally occurring variations (e.g. polymorphisms), each with its own valid existence. This clone is substantially in agreement with the reference, but a complete review of all prevailing variants is recommended prior to use. [More info](#)

OTI Annotation: This clone was engineered to express the complete ORF with an expression tag. Expression varies depending on the nature of the gene.

Components: The ORF clone is ion-exchange column purified and shipped in a 2D barcoded Matrix tube containing 10ug of transfection-ready, dried plasmid DNA (reconstitute with 100 ul of water).

Reconstitution Method:

1. Centrifuge at 5,000xg for 5min.
2. Carefully open the tube and add 100ul of sterile water to dissolve the DNA.
3. Close the tube and incubate for 10 minutes at room temperature.
4. Briefly vortex the tube and then do a quick spin (less than 5000xg) to concentrate the liquid at the bottom.
5. Store the suspended plasmid at -20°C. The DNA is stable for at least one year from date of shipping when stored at -20°C.

RefSeq: [NM_001145365.3](#)

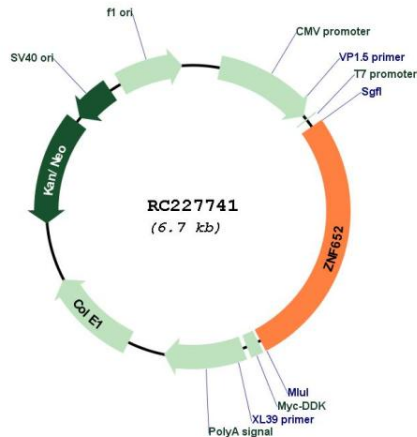
RefSeq ORF: 1821 bp

Locus ID: 22834

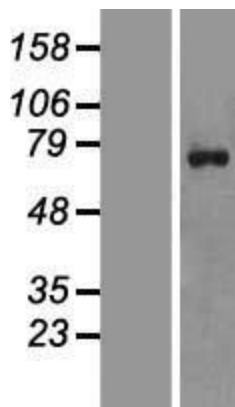
UniProt ID: [Q9Y2D9](#)

Cytogenetics: 17q21.32-q21.33
 MW: 69.6 kDa
 Gene Summary: Functions as a transcriptional repressor.[UniProtKB/Swiss-Prot Function]

Product images:



Circular map for RC227741



Western blot validation of overexpression lysate (Cat# [LY428846]) using anti-DDK antibody (Cat# [TA50011-100]). Left: Cell lysates from untransfected HEK293T cells; Right: Cell lysates from HEK293T cells transfected with RC227741 using transfection reagent MegaTran 2.0 (Cat# [TT210002]).