

Product datasheet for **RC227732**

LUZP1 (NM_001142546) Human Tagged ORF Clone

Product data:

Product Type: Expression Plasmids
Product Name: LUZP1 (NM_001142546) Human Tagged ORF Clone
Tag: Myc-DDK
Symbol: LUZP1
Synonyms: LUZP
Mammalian Cell Selection: Neomycin
Vector: pCMV6-Entry (PS100001)
E. coli Selection: Kanamycin (25 ug/mL)
ORF Nucleotide Sequence: >RC227732 representing NM_001142546
Red=Cloning site Blue=ORF Green=Tags(s)

TTTTGTAATACGACTCACTATAGGGCGGCCGGAATTCGTCGACTGGATCCGGTACCGAGGAGATCTGCC
GCC**CGATCGCC**

ATGGCCGAATTTACAAGCTACAAGGAGACGGCCTCCAGCCGCCACTTGCGGTTTAAAGCTACAGAGTCTAA
GCCCGCCTTGATGAGTTGGAGGAAGCCACAAAAACCTCCAGAAAGCAGAGGATGAACCTCTGGATCT
CCAGGACAAGGTGATTCAGGCAGAAGGTAGCAACTCCAGCATGTTGGCGGAGATTGAAGTCTGCGCCAG
CGGTGCTGAGAATTGAAGGCAAAGACGAGGAAATTAAGAGAGCAGAGGATCTGTGTCGTCGATGAAGG
AGAACTTGAAGAGGAAGAAAACCTCACCCGGGAGCTGAAATCTGAGATTGAGCGGCTTCAGAAACGAAT
GGCTGAATTAGAGAAGCTAGAAGAGGCCTTCAGCAGGAGTAAGAATGACTGTACCCAGCTGTGTCGAGC
CTGAATGAGGAGAGAAATCTGACCAAGAAAATCTCCTCTGAGCTGAAATGCTCAGAGTCAAAGTAAAG
AACTAGAATCTTCTGAGGACCGCCTGGATAAACTGAGCAGAGTTTAGCGTCAGAGTTAGAAAAGCTGAA
ATCATTAACTCTGAGCTTTGTAAGTGAAGAGAAAATACTTGAATGAAAAGGAGAAAGAAAATGAGAAATTG
ATAAAAGAACTCACTCAAAAAGTACAGCAGAACAAAAAATGAACCGAGATTATACAAGGAATGCTTCTA
ATCTGAAAGAAATGACCTACGGATTGAGGATGGCATCTCTCCACACTGCCGTCCAAAGAAATCAAGAAG
GAAGGGTGGTCTGGACTACCTAAAGCAGGTAGAGAATGAAACAAGAAACAAATCAGAAAAATGAAAAGAAC
CGCAATCAGGAAGACAACAAGTCAAAGACCTTAACCAAGAGATTGAGAACTTAAGACACAAATCAAAC
ACTTTGAATCGTTGGAAGAAGAGCTTAAGAAAATGAAGTCCAAAAATAACGACCTTCAGGATAATTACCT
AAGTGAACAAAATAAAAACAATTTATTAGCCAGCAACTGGAGGAGATAAAGCTACAAATCAAGAAACAG
AAAGAGTTAGAAAATGGAGAGGTAGAAGGGGAAGATGCTTTCCTGTCCAGCAAAGGCAGACATGAGAGGA
CTAAGTTTAGAGGCCACGGAAGTGAAGCTTCTGTGTCCAAGCACACAGCGCGGAACTGTCTCCTCAGCA
TAAGCGGGAACGACTCCGGAACAGGGAGTTTGCTCTCAACAATGAAAATATTCTCTGAGCAACAGGCAG
GTTTCTTCTCCAGTTTCAACAACAGGAGGGCAGCAAAGCTTCTCACATGGGGTGAGTACAGACAGTG
GGACTCAGGAGACAAAGAAAATGAAGACCGGTTTGTACCCGGCTCCTCCAGAGCGAAGGGAAGAAGTC
TAGGGAGCAGCCCTCAGTGTGAGTCGCTACCCCGGCTGCTCAGGAGCACAGTAAAGCGTGAAGGGG



ACTTCCAAGCCAGGCACCGAGAGCGGACTGAAGGGAAAAGTGGAGAAGACAACACGAACGTTTGTGACA
 CCACCCATGGATCTGTTCCCACTGACCCATTGGGTAGAGCTGACAAGGCTTCTGACACCTCCTCTGAGAC
 TGTCTTTGGCAAGAGGGGACACGTGCTTGGCAACGGAAGTCAAGTAACTCAGGCTGCAAACCTCTGGCTGT
 TCTAAGGCCATTGGAGCCCTGGCCTCATCTCGAAGATCCTCTCAGAAGGGCTCTCTAAAGGCAAAAAGG
 CTGCCAATGGCCTTGAGGCTGATAACAGTTGCCGAATCCAAGGCTCCTGTTCTATCGAAGTATCCTTA
 TAGCTGTAGAAGCCAAGAGAACATCCTTCAGGGATTTTCAACCTCACATAAAGAAGGGGTTAATCAACCT
 GCAGCAGTTGTGATGGAAGACAGCAGTCCGCATGAAGCCTTGAGGTGTCGAGTCATCAAATCCAGTGCA
 GAGAGAAGCCAGACTCAGATGATGACTTGGACATAGCATCTCTTGTACTGCCAAGTTGGTAAATACAAC
 CATCACTCCAGAGCCAGAGCCAAAACCACAGCCTAACTCTAGAGAAAAGGCTAAAACCCGAGGGGACCT
 AGAACCTCCCTATTTGAGAATGATAAAGATGCTGGAATGGAGAATGAATCTGTGAAATCTGTGAGAGCCT
 CCACCAATACCATGGAGCTCCCAGATACCAATGGTGTGGGGTAAAAAGCCAAAGGCCCTTTAGCCCCAG
 AGAGGCGTTGCGGTCTAGAGCCATCATCAAACCTGTTATTGTTGATAAGGATGTGAAAAAATCATGGGA
 GGATCTGGAACAGAGACTACGTTGGAGAAAACAGAAACCCGTCTCAAACCCAGGGCCAAACAAAGTGACAA
 GTAGCATTACTATATCCATCTGACAGCAGCAGCCCAGAGCTGCTCCGGGTGAGGCCCTGAGGGAGAG
 GCACACATCCACTAGCAATATCCAGGTGGGGCTGGCAGAGCTCACATCAGTTAGCAACCATGTCAGCTCC
 CCTTTTGAAGCTCTCCATTCACAAACATGACATCACCTGCAGCTTGCAAGCGGAGAGAATGGCAGATG
 GGCCCTGAAGGACAGGCCAGAAACAGTGGTCTCTCGGAGCAGCATTATAATCAAGCCATCGGATCCTGT
 GGAGAGGAATAGCCATGCACCTCCAGCGGAGACAATCAGGTGGAAAAGCCATAGTGCCCTTTCAGAAGTG
 GGCTTCTCAGATGCCAGACATGTTACTGTGCGGAATGCCTGGAAGAGTAGGCGAGACTTGAATCTTTAG
 AAGACCCCAACTCGAATAGGTAAAAACGTGGAATCTACCAATAGCAATGCCTACACCCAGAGGTCTTC
 CACAGACTTCTCAGAACTCGAACAGCCAGGTCTGCCTTTTGGAGCAGGGCACTCGAAGGGTAGGACCA
 AGTTCAGGGGATGCCCTGAGCCCTCTCCAGAAGGACCCAAAGTAGCCTCACTGTGTGAGAGGTGCTTA
 CCCGTGCGAATCGGGTAGGAGACACCATCACTGTGCGAGCCTGGAACCACTCAGCAAGCATGGAGGAAGA
 AGGGGAAGACTGTACACTCAGTGTCTACAGGCAACTGCACAACCTCCCTGGATCCGTCTGAACTGCCTGGG
 AAGCAGGGGCTGCCAGAGTCTGGGCGAGTACGGGCCGAGGAACGATTACGGCCAACCAGGCCCTGTGCTG
 AGGAGAAC

ACGCGTACGCGGGCCGCTCGAGCAGAAACTCATCTCAGAAGAGGATCTGGCAGCAATGATATCCTGGATT
 ACAAGGATGACGACGATAAGGTTTAA

Protein Sequence:

>RC227732 representing NM_001142546
 Red=Cloning site Green=Tags(s)

MAEFTSYKETASSRHLRFKQLSLSRRLDELEEATKNLQKAEDELDDLQDKVIQAEAGNSSMLAEIEVLRQ
 RVLRIEGKDEEIKRAEDLCRLMKEKLEEEENLTRELKSEIERLQKRMAELEKLEEFSSKNDCTQLCLS
 LNEERNLTKKISSELEMLRVKVELESSEDRDLKTEQSLASELEKLSLTLFVSRKYLNKEKENEKLE
 IKELTQKLEQNKMNDRYTRNASLERNDLRIEDGISSTLPSKESRRKGGLDYKQVENE TRNKSENEKN
 RNQEDNKVKDLNQEIEKLTQIKHFELEELKKMKSKNNDLQDNYLSEQNKNLLASQLEEIKLQIKKQ
 KELENVEVEGEDAFLSSKGRHERTKFRHGSEASVSKHTARELSPQHKRERLRNREFALNNENYSLSNRQ
 VSSPSFTNRRAAKASHMGVSTDSGTQETKTKTEDRFVPGSSQSEGKKSREQPSVL SRYPPAAQEHSKAWKG
 TSKPGTESGLKGVKVEKTRTFSDTTHTGSVPSDPLGRADKASDTSSETVFGKRGHV LNGSQTVAANS GC
 SKAIGALASSRRSSSEGLSKGKKAANGLEADNSCPNSKAPVLSKYPYSCR SQENILQGFSTSHKEGVNQP
 AAVVMEDSSPHEALRCRVIKSSGREKPDSDDDLDIASLVTAKLVNTTITPEPEPKQPNSREKAKTRGAP
 RTSLFENDKDAGMENESVKSVRASNTMELPDTNGAGVKSQRPFSPREALRSRAI IKPVI VDKDVKKIMG
 GSGTETTLEKQKPVSKPGPNKVTSSIT IYPSDSSPRAAPGEALRERHTSTSNIQVGLAELTSVSNHVSS
 PFELSIHKHDITLQLAEAERMADGPLKDRPETVVSRSII IKPSDPVERN SHAPPAETIRWKSHPSEV
 GFSDARHVTVRNAWKSRRDLKSLLEDPPTRIGKNVESTNSNAYTQRSSTDFSELEQPRSCLEFQGTRRVGP
 SSGDAPEPSSRRQTSSLTYSEVLTRNRVGDITVAAWNHSASMEEEGEDCTLSVYRQLHNSLDPSELPG
 KQGLPESGRVRAEERLRPTRCAEEN

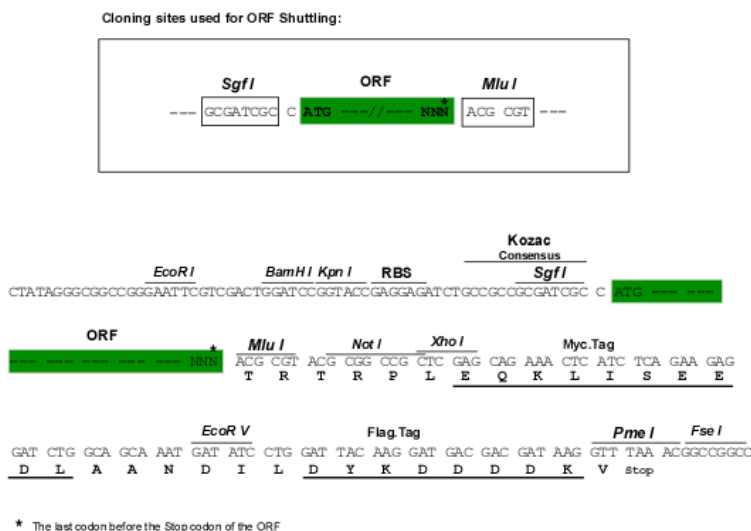
TRTRPLEQKLISEEDLAANDILDYKDDDDKV

Chromatograms:

https://cdn.origene.com/chromatograms/mk6596_b07.zip

Restriction Sites: SgfI-MluI

Cloning Scheme:



ACCN: NM_001142546

ORF Size: 3228 bp

OTI Disclaimer: The molecular sequence of this clone aligns with the gene accession number as a point of reference only. However, individual transcript sequences of the same gene can differ through naturally occurring variations (e.g. polymorphisms), each with its own valid existence. This clone is substantially in agreement with the reference, but a complete review of all prevailing variants is recommended prior to use. [More info](#)

OTI Annotation: This clone was engineered to express the complete ORF with an expression tag. Expression varies depending on the nature of the gene.

Components: The ORF clone is ion-exchange column purified and shipped in a 2D barcoded Matrix tube containing 10ug of transfection-ready, dried plasmid DNA (reconstitute with 100 ul of water).

Reconstitution Method:

1. Centrifuge at 5,000xg for 5min.
2. Carefully open the tube and add 100ul of sterile water to dissolve the DNA.
3. Close the tube and incubate for 10 minutes at room temperature.
4. Briefly vortex the tube and then do a quick spin (less than 5000xg) to concentrate the liquid at the bottom.
5. Store the suspended plasmid at -20°C. The DNA is stable for at least one year from date of shipping when stored at -20°C.

Note: Plasmids are not sterile. For experiments where strict sterility is required, filtration with 0.22um filter is required.

RefSeq: [NM_001142546.1](#), [NP_001136018.1](#)

RefSeq ORF: 3231 bp

Locus ID: 7798

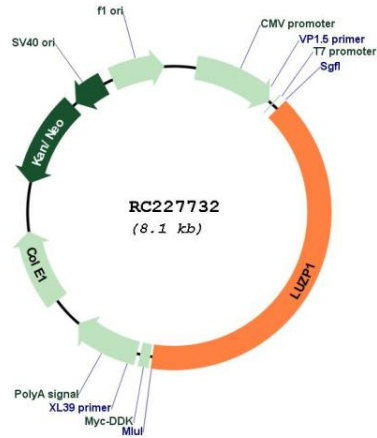
UniProt ID: [Q86V48](#)

Cytogenetics: 1p36.12

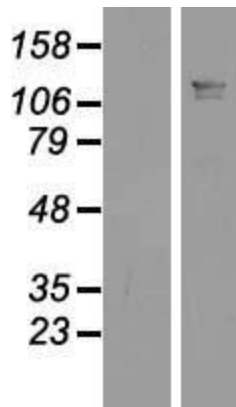
MW: 120.1 kDa

Gene Summary: This gene encodes a protein that contains a leucine zipper motif. The exact function of the encoded protein is not known. In mice this gene affects neural tube closure. Alternative splicing results in multiple transcript variants. [provided by RefSeq, Dec 2008]

Product images:



Circular map for RC227732



Western blot validation of overexpression lysate (Cat# [LY428164]) using anti-DDK antibody (Cat# [TA50011-100]). Left: Cell lysates from untransfected HEK293T cells; Right: Cell lysates from HEK293T cells transfected with RC227732 using transfection reagent MegaTran 2.0 (Cat# [TT210002]).