

## Product datasheet for **RC227731**

### ADAMTSL2 (NM\_001145320) Human Tagged ORF Clone

#### Product data:

Product Type:	Expression Plasmids
Product Name:	ADAMTSL2 (NM_001145320) Human Tagged ORF Clone
Tag:	Myc-DDK
Symbol:	ADAMTSL2
Synonyms:	ADAMTSL-2; GPHYSD1
Mammalian Cell Selection:	Neomycin
Vector:	pCMV6-Entry (PS100001)
E. coli Selection:	Kanamycin (25 ug/mL)



[View online »](#)

**ORF Nucleotide Sequence:**

>RC227731 representing NM\_001145320  
 Red=Cloning site Blue=ORF Green=Tags(s)

TTTTGTAATACGACTCACTATAGGGCGGCCGGAATTCGTCGACTGGATCCGGTACCGAGGAGATCTGCC  
 GCC**CGGATCGCC**

ATGGATGGCAGATGGCAATGTTCTCTGCTGGGCCTGGTTCTCTGCTGTTCTGGCAGTTGTAGCTGGGGACA  
 CAGTGTCAACCGGTCCACGGACAACAGCCCAACATCCAATAGCCTGGAGGGGGGACCGACGCCACGGC  
 CTTCTGGTGGGGGAGTGGACCAAGTGGACGGCGTGTCCCGCAGTTGCGGGGGTGGGGTACATCCAG  
 GAGCGGCACTGCCTGCAGCAGAGGAGGAAGTCCGTCCCGGGCCCCGGAACAGGACCTGCACGGGCACGT  
 CCAAGCGGTACCAGCTCTGCAGAGTGCAGGAGTGTCCGCCGACGGGAGGAGCTTCCGCGAGGAGCAGTG  
 CGTCTCCTTCACTCCCACGTGTACAACGGGCGGACGCACCAGTGGAAAGCCTCTGTACCCGGATGACTAT  
 GTCCACATCTCCAGAAACCGTGTGACCTGCACCTGTACCACCGTGGACGGCCAGCGGCAGCTCATGGTCC  
 CCGCCCCGCGACGGCACATCCTGCAAGCTACTGACCTGCGAGGGGTTTTCGTGTCTGGAAAATGTGAGCC  
 CATCGGCTGTGACGGGGTCTTTTCTCCACCCACACACTGGACAAGTGTGGCATCTGCCAGGGGGACGGT  
 AGCAGCTGCACCCACGTGACGGGCAACTATCGCAAGGGGAATGCCACCTTGGTTACTCTCTGGTACCC  
 ACATCCCGGCTGGTGCCCGAGACATCCAGATTGTAGAGAGGAAGAAGTCCGCTGACGTGCTAGCTTTGC  
 AGACGAAGCTGGCTACTACTTCTTCAACGGCAACTACAAGGTGGACAGCCCAAGAACTTCAACATCGCA  
 GGCACGGTGGTCAAGTACAGGGGCCATGGATGTCTATGAGACCGGAATCGAGTACATCGTGGCACAGG  
 GGCCCAACACAGGGCCTGAATGTGTATGGTGTGGAACAGAAACGGCAAAAGCCCTCCATCACCTTCGA  
 GTACACGCTGTGCAGCCGCACACGAGAGCCGCCAGCCATCTACTATGGCTTCTCCGAGAGCGCT  
 GAGAGCCAGGGCCTGGACGGGGCCGGGCTGATGGGCTTCGTCCCGCACACGGCTCCCTCTACGGCCAGG  
 CCTCTCAGAGCGGCTGGGCTGGACAACCGGCTGTTTCGGCCACCCGGGCTGGACATGGAGCTGGGCC  
 CAGCCAGGGCCAGGAGACCAACGAGGTGTGCGAGCAGGCCGGCGGGGCTGCGAGGGGCCCCCAAGG  
 GGCAAGGGCTTCCGAGACCGCAACGTACGCGGGACTCCTCTACCGGGGCAAGGATGACGAAGAGGTTG  
 ACACCCACTTCGCCTCCAGGAGTTCTTCTCGGCTAACGCCATCTCTGACCAGCTGCTGGGCGCAGGCTC  
 TGACTTGAAGGACTTCACCCTCAATGAGACTGTGAACAGCATCTTTGCACAGGGCGCCCCAAGGAGCTCC  
 CTGGCCGAGAGCTTCTTCTGGATTATGAGGAGAACGAGGGGGCTGGCCCTTACCTGCTCAACGGGTCT  
 ACCTGGAGCTGAGCAGCGACAGGGTTGCCAACAGCTCCTCCGAGGCCCATTCGCCAACGTTAGCACACG  
 CCTGCTCACCTCGGCCGGAACAGGACTACAAGGCCAGGACCAGGCCCAAGGCGCGCAAGCAAGGCGTG  
 AGTCCCGCGACATGTACCGGTGGAAGCTCTCGTCCCACGAGCCCTGCAGTGCCACTGCACCACAGGGG  
 TCATGTCTGCGTACGCCATGTGTGTCCGCTATGATGGCGTCGAGGTGGATGACAGCTACTGTGACGCCCT  
 GACCCGTCCCGAGCCTGTCCACGAGTTCTGCGCTGGGAGGGAGTGCCAGCCAGGTGGGAGACGAGCAGC  
 TGGAGCGAGTGTTCGCGCACCTGCGGAGAGGGCTACCAGTTCCCGCTGCTGCGCTGCTGGAAGATGCTCT  
 CGCCCGGCTTCGACAGCTCCGTGTACAGCGACCTGTGCGAGGCAGCCGAGGCCGTGCGGCCCGAGGAACG  
 CAAGACCTGCCGGAACCCCGCTGCGGGCCCCAGTGGGAGATGTCGGAGTGGTCCGAGTGCAGTGCACAG  
 TGTGGGAGCGCAGTGTGGTACCAGGGACATCCGCTGCTCGGAGGATGAGAAGCTGTGTGACCCCAACA  
 CCAGGCCGTGAGGGGAGAAGAACTGCACGGGCCCGCCCTGTGACCGGCAGTGGACCGTCTCCGACTGGGG  
 ACCGTGCAGTGGAAAGCTGCGGGCAAGGCCGACCATCAGGCACGTGTACTGCAAGACCAGCGACGGACGG  
 GTAGTACCTGAGTCCCAGTGCCAGATGGAGACCAAGCCTCTGGCCATCCACCCCTGTGGGACAAAAACT  
 GTCCCGCCACTGGCTGGCCAGGACTGGGAGCGGTGCAACACCCTGCGGGCGCGGGGTCAAGAAGCG  
 GCTGGTGTCTGCATGGAGCTGGCCAACGGGAAGCCGACAGCGCGAGTGGCCCCGAGTGCGGGCTCGCC  
 AAGAAGCCTCCCGAGGAGACAGTGTTCGAGAGGCCCTGCTTCAAGTGGTACACCAGCCCTGGTTCAG  
 AGTGCACCAAGACCTGCGGGGTGGGCGTGGAGTGCAGAGCTCAAGTGTACCAGGGGACCGACATCGT  
 CCGTGGTTCGATCCGTTGGTGAAGCCGTTGGCAGACAGGCCTGTGATCTGCAGCCCTGCCACGGAG  
 CCCCAGATGACAGCTGCCAGGACCAGCCAGGCACCAACTGTGCCCTGGCCATCAAAGTGAACCTCTGCG  
 GCACTGGTACTACAGCAAGCGTGTGCCGCTCTGCAGGCCCCCCACTCC

**ACGCGT**ACGCGGCCGCTCGAGCAGAAACTCATCTCAGAAGAGGATCTGGCAGCAAATGATATCCTGGATT  
 ACAAGGATGACGACGATAAGGTTTAA

**Protein Sequence:** >RC227731 representing NM\_001145320  
 Red=Cloning site Green=Tags(s)

```
MDGRWQCSCWAWFLLVLAVVAGDVTSTGSTDNSPTSNSLEGGTDATAFWWGEWTKWTACSRSCGGGVTSQ
ERHCLQRRKSVPGPNRTCTGTSKRYQLCRVQECPPDGRSFRREEQCVSFNSHVYNGRTHQWKPLYPDDY
VHISKPCDLHCTTVDGQRQLMVPARDGTSCKL TDLRGVCVSGKCEPIGCDGVLFSHTLTDKCGICQGDG
SSCTHVTGNYRKGNAHLGYSLVTHIPAGARDIQIVERKKSAVDLALADEAGYYFFNGNYKVDSPKNFNIA
GTVVKYRRPMDVYETGIEYIVAQPTNQGLNVMVWNQNGKSPSITFEYTL LQPPHESRPQPIYYGFSESA
ESQGLDAGLMGFVPHNGSLYGQASSERLGLDNRLF GHPGLDMELGSPSQQETNEVCEQAGGGACEGPPR
GKGFDRDRNVTGTPLTGDKDDEEVDTHFASQEFFSANAI SDQLL GAGSDLKDFTLNETVNSIFAQGAPRSS
LAESFFVDYEENEGAGPYLLNGSYLELSSDRVANSSSEAPFPNVSTLLTSAGNRTHKARTRPKARKQGV
SPADMYRWKLSSEPCSATCTTGVM SAYAMCVRYDGV EVDSDYCDALTRPEPVHEFCAGRECQPRWETSS
WSECSRTCGEGYQFRVVRCKWMLSPGF DSSVYSDLCEAAEAVRPEERKTCRNPACGPQWEMSEWSECTAK
CGERSVTRDIRCSEDEKLCDPNTRPVGEKNCTGPPCDRQWTVSDWGPCSGCGQRTIRHVYCKTSDGR
VVPESQCQMETKPLAIHPCGDKNCPAHLA QDWERCNTTCGRGVKKRLVLCMELANGKPQTRSGPECGLA
KKPPEESTCFERPCFKWYTPSWSECTKTCGVGVRMRDVKCYQGTDIVRGCDPLVKPVGRQACDLQPCPTE
PPDDSCQDQPGTNCALAIKVNLCGHWYYSKACCRSCRPPHS
```

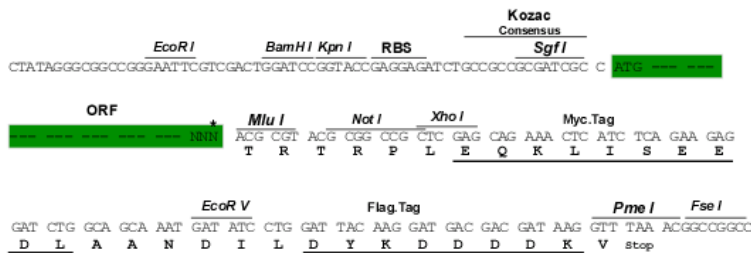
TRTRPLEQKLISEEDLAANDILDYKDDDDKV

**Chromatograms:** [https://cdn.origene.com/chromatograms/mk8100\\_c12.zip](https://cdn.origene.com/chromatograms/mk8100_c12.zip)

**Restriction Sites:** SgfI-MluI

**Cloning Scheme:**

Cloning sites used for ORF Shuttling:



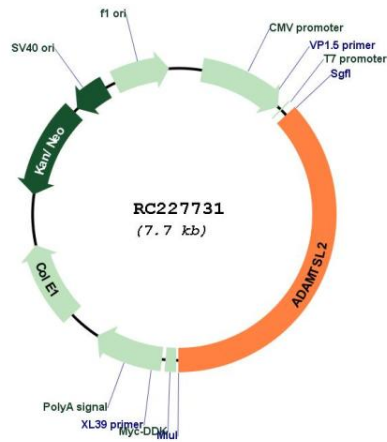
\* The last codon before the Stop codon of the ORF

**ACCN:** NM\_001145320

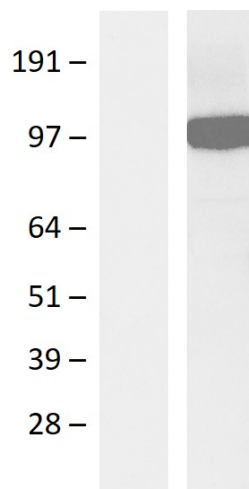
**ORF Size:** 2853 bp

<b>OTI Disclaimer:</b>	The molecular sequence of this clone aligns with the gene accession number as a point of reference only. However, individual transcript sequences of the same gene can differ through naturally occurring variations (e.g. polymorphisms), each with its own valid existence. This clone is substantially in agreement with the reference, but a complete review of all prevailing variants is recommended prior to use. <a href="#">More info</a>
<b>OTI Annotation:</b>	This clone was engineered to express the complete ORF with an expression tag. Expression varies depending on the nature of the gene.
<b>Components:</b>	The ORF clone is ion-exchange column purified and shipped in a 2D barcoded Matrix tube containing 10ug of transfection-ready, dried plasmid DNA (reconstitute with 100 ul of water).
<b>Reconstitution Method:</b>	<ol style="list-style-type: none"><li>1. Centrifuge at 5,000xg for 5min.</li><li>2. Carefully open the tube and add 100ul of sterile water to dissolve the DNA.</li><li>3. Close the tube and incubate for 10 minutes at room temperature.</li><li>4. Briefly vortex the tube and then do a quick spin (less than 5000xg) to concentrate the liquid at the bottom.</li><li>5. Store the suspended plasmid at -20°C. The DNA is stable for at least one year from date of shipping when stored at -20°C.</li></ol>
<b>RefSeq:</b>	<a href="#">NM_001145320.2</a>
<b>RefSeq Size:</b>	4083 bp
<b>RefSeq ORF:</b>	2856 bp
<b>Locus ID:</b>	9719
<b>UniProt ID:</b>	<a href="#">Q86TH1</a>
<b>Cytogenetics:</b>	9q34.2
<b>Protein Families:</b>	Secreted Protein
<b>MW:</b>	104.6 kDa
<b>Gene Summary:</b>	This gene encodes a member of the ADAMTS (a disintegrin and metalloproteinase with thrombospondin motifs) and ADAMTS-like protein family. Members of the family share several distinct protein modules, including a propeptide region, a metalloproteinase domain, a disintegrin-like domain, and a thrombospondin type 1 (TS) motif. Individual members of this family differ in the number of C-terminal TS motifs, and some have unique C-terminal domains. The protein encoded by this gene lacks the protease domain, and is therefore of a member of the the ADAMTS-like protein subfamily. It is a secreted glycoprotein that binds the cell surface and extracellular matrix; it also interacts with latent transforming growth factor beta binding protein 1. Mutations in this gene have been associated with geleophysic dysplasia. [provided by RefSeq, Feb 2009]

Product images:



Circular map for RC227731



Western blot validation of overexpression lysate (Cat# [LY428823]) using anti-DDK antibody (Cat# [TA592569]). Left: Cell lysates from untransfected HEK293T cells; Right: Cell lysates from HEK293T cells transfected with RC227731 using transfection reagent PEI.