

Product datasheet for **RC227724**

DELE1 (NM_001142603) Human Tagged ORF Clone

Product data:

Product Type:	Expression Plasmids
Product Name:	DELE1 (NM_001142603) Human Tagged ORF Clone
Tag:	Myc-DDK
Symbol:	DELE1
Synonyms:	DELE; DELE1(L); KIAA0141
Mammalian Cell Selection:	Neomycin
Vector:	pCMV6-Entry (PS100001)
E. coli Selection:	Kanamycin (25 ug/mL)



[View online »](#)

ORF Nucleotide Sequence:

>RC227724 ORF sequence
 Red=Cloning site Blue=ORF Green=Tags(s)

TTTTGTAATACGACTCACTATAGGGCGGCCGGGAATTCGTCGACTGGATCCGGTACCGAGGAGATCTGCC
 GCC**GCGATCGCC**

ATGTGGCGCCTCCCGGGACTCCTGGGCCGAGCTCTCCCGTACACTGGGACCTAGCCTCTGGAGGGTGA
 CTCCTAAGTCCACCAGCCAGATGGGCCTCAGACTACCTCCTCCACTTTGCTGGTTCCTGTGCCTAACCT
 CGACAGGTCAGGTCCTCATGGCCAGGCACGAGCGGGGTCCAAGTCCCATGGATGGAAGGATGCCTTC
 CAATGGATGTCTTCCCGTGTCTCCCGAACACCCTATGGGATGCCATATCTTGGGCACTCTGGCCGTGC
 TGGCCCTCGAGCTGGCAAGGCAGATCCACTTCCAGGCATCCCTGCCAGCAGGACCTCAGCGGGTAGAACA
 CTGCTCCTGGCACAGTCCCCTGGACCGTTTCTTCTCATCTCCCTTGTGGCACCCATGCTCCTCACTGCGA
 CAACACATCTCCCAGCCCCGATGGCCAGCTCCAGGCACACTGGCCTCAGGGAACCCAGGCTTGGCC
 AGGAAGAAGCCTCAGCTCAGCCCCGAACTTCTCACAACTCTTGGAGAGGAGCTCGTCTCAGGACCC
 CTCTGAGGAAGTCCCGGTGATTTTGGCTTCTGCATGCCAGTAGTAGCATCGAGTCCGAGGCAAAACCA
 GCCCAGCCTCAGCCACTGGTGAAGGAACAAGATAAATCAAAAACCTTTCCCTTGGAGAGGCTGTGA
 CTTCCATTGAGCAGCTCTTCCAGCTCAGTGTTCATCACTTTCAACTTCTGGGAACAGAGAACATGAA
 GAGTGGCGACCACACGGCAGCCTTTTCTACTTCCAGAAAGCTGCAGCCCGCGGTACAGCAAAGCGCAG
 TACAATGCGGGCTTGTGTATGAGCATGGCAGAGGCACCCCCAGGGACATTAGCAAGGCGGTCTTTATT
 ATCAGTTGGTGGCAGCCAGGGCCACAGCCTGGCTCAGTACCGCTATGCCAGGTGCCTACTACGAGACCC
 AGCCTCTTCGTGGAACCTGAGCGGCAGAGGGCAGTGTCTTGTGAAGCAGGCTGCAGACTCAGGCTTG
 AGAGAGGCCCAAGCTTCTCGGGTGTCTTCCACCAAGGAGCCCTACCTGGATGAGCAGAGAGCTGTGA
 AATATCTTTGGCTTGCAGCAACAATGGGACTCACAGAGCAGTACCACCTTGGAAATTTGCTATGAGAA
 AGGCCTTGGTGTGACAGAGGAATCTGGGAGAGCCCTTGGATGTTACCAGCAGTCAGCCGCTCTGGGAAAT
 GAGGCCGCCAGGAGAGGCTGCGAGCCCTTTTCCATGGGGGCTGCAGCCCCGGGGCCAGCGACCTGA
 CAGTTACAGGACTGAAGTCTTCTCCAGCCCTCCCTCTGCAGCTTGAACACCCTGCTAGCAGGAACCTC
 ACGCCTACCACATGCCTCGAGCACAGGCAACCTTGGCCTCCTCTGCAGAAGTGGGCATCTCGGAGCCAGC
 CTGGAAGCCTCCAGCAGGGCTATTCCCCACACCCTACCCACTGGAAAGGAGTGTGTAAGACTAGGTT
 TTGGC

ACGCGTACGCGGCCGCTCGAGCAGAACTCATCTCAGAAGAGGATCTGGCAGCAAATGATATCTGGATT
 ACAAGGATGACGACGATAAGGTTTAA

Protein Sequence:

>RC227724 protein sequence
 Red=Cloning site Green=Tags(s)

MWRLPGLLGRALPRTLGPSTLWVTPKSTSPDGPQTSSSTLLVPVPLNDRSGPHPGTSGGPRSHGWKDAF
 QWSSRVSPNTLWDAISWGLAVLALQLARQIHFQASLPAGPQRVEHCSWHSPLDRFFSSPLWHPCSSLR
 QHILPSPDGPAPRHTGLREPRLGQEEASAQPRNFSHNSLRGARPQDPSEEGPQDFGLHASSSIESEAKP
 AQPQPTGEKEQDKSKTSLSEEAVTSIQQLFQLSVSITFNFLGTENMKSGDHTAAF SYFQKAAARGYSKAQ
 YNAGLCHEHGRGTPRDISKAVLYYQLAASQGHSLAQYRYARCLLRDPASSWNPERQRAVSLKQAADSGL
 REAQAFGLVLFTEPYLDEQRAVKYLWLAANNGDSQSRYLHGICYEKGLGVQRNLGEALRCYQQAALGN
 EAAQERLRALFSMGAAAPGPSDLTVTGLKSFSSPSLCSLNTLLAGTSRLPHASSTGNLGLLCRSGHLGAS
 LEASSRAIPHPYPLERSVVRLGFG

TRTRPLEQKLISEEDLAANDILDYKDDDDKV

Chromatograms:

https://cdn.origene.com/chromatograms/mk6747_b05.zip

Restriction Sites:

Sgfl-MluI

Cloning Scheme:


ACCN: NM_001142603

ORF Size: 1545 bp

OTI Disclaimer: The molecular sequence of this clone aligns with the gene accession number as a point of reference only. However, individual transcript sequences of the same gene can differ through naturally occurring variations (e.g. polymorphisms), each with its own valid existence. This clone is substantially in agreement with the reference, but a complete review of all prevailing variants is recommended prior to use. [More info](#)

OTI Annotation: This clone was engineered to express the complete ORF with an expression tag. Expression varies depending on the nature of the gene.

Components: The ORF clone is ion-exchange column purified and shipped in a 2D barcoded Matrix tube containing 10ug of transfection-ready, dried plasmid DNA (reconstitute with 100 ul of water).

Reconstitution Method:

1. Centrifuge at 5,000xg for 5min.
2. Carefully open the tube and add 100ul of sterile water to dissolve the DNA.
3. Close the tube and incubate for 10 minutes at room temperature.
4. Briefly vortex the tube and then do a quick spin (less than 5000xg) to concentrate the liquid at the bottom.
5. Store the suspended plasmid at -20°C. The DNA is stable for at least one year from date of shipping when stored at -20°C.

RefSeq: [NM_001142603.3](#)

RefSeq Size: 4195 bp

RefSeq ORF: 1548 bp

Locus ID: 9812

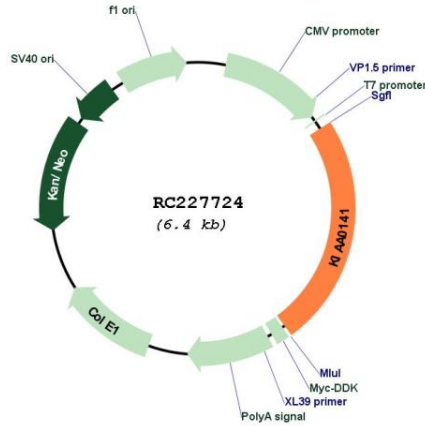
UniProt ID: [Q14154](#)

Cytogenetics: 5q31.3

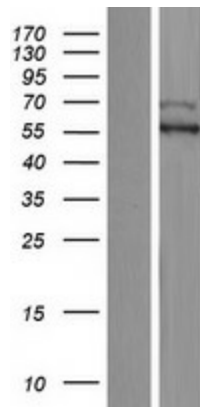
MW: 55.9 kDa

Gene Summary: Essential for the induction of death receptor-mediated apoptosis through the regulation of caspase activation.[UniProtKB/Swiss-Prot Function]

Product images:



Circular map for RC227724



Western blot validation of overexpression lysate (Cat# [LY428204]) using anti-DDK antibody (Cat# [TA50011-100]). Left: Cell lysates from untransfected HEK293T cells; Right: Cell lysates from HEK293T cells transfected with RC227724 using transfection reagent MegaTran 2.0 (Cat# [TT210002]).