

## Product datasheet for RC227716

### LANCL1 (NM\_001136574) Human Tagged ORF Clone

#### Product data:

Product Type:	Expression Plasmids
Product Name:	LANCL1 (NM_001136574) Human Tagged ORF Clone
Tag:	Myc-DDK
Symbol:	LANCL1
Synonyms:	GPR69A; p40
Mammalian Cell Selection:	Neomycin
Vector:	pCMV6-Entry (PS100001)
E. coli Selection:	Kanamycin (25 ug/mL)
ORF Nucleotide Sequence:	>RC227716 ORF sequence Red=Cloning site Blue=ORF Green=Tags(s)

TTTTGTAATACGACTCACTATAGGGCGCCGGGAATTCGTCGACTGGATCCGGTACCGAGGAGATCTGCC  
GCC**CGATCGCC**

ATGGCTCAAAGGGCCTCCCGAATCCTTATGCTGATTATAACAAATCCCTGGCCGAAGGCTACTTTGATG  
CTGCCGGGAGGCTGACTCCTGAGTTCTCACAACGCTTGACCAATAAGATTCGGGAGCTTCTTCAGCAAAT  
GGAGAGAGGCCTGAAATCAGCAGACCCTCGGGATGGCACCAGTTACTGGCTGGCAGGTATTGCTGTG  
CTTTACTTACATCTTTATGATGATTTGGGACCCTGCCTACCTACAGTTAGCACATGGCTATGTAAGC  
AAAGTCTGAAGCTTAACCAAGCGCTCCATCACCTTCCTTTGTGGGGATGCAGGCCCTGGCAGTGGC  
CGCTGTGCTATATCACAAGATGAACAATGAGAAGCAGGCAGAAGATTGCATCACACGGCTAATTCACCTA  
AATAAGATTGATCCTCATGCTCCAAATGAAATGCTCTATGGGCGAATAGGCTACATCTATGCTCTCTTT  
TTGTCAATAAGAACTTTGGAGTGGAAAAGATTCCCAAAGCCATATTCAGCAGATTTGTGAAACAATTTT  
AACCTCTGGAGAAAACCTAGCTAGGAAGAGAACTTCACGGCAAAGTCTCCACTGATGTGAATGGTAC  
CAGGAATATTATGTAGGGGCTGCTATGGCCTGGCTGGAATTTATTACTACCTGATGCAGCCAGCCTTC  
AAGTGAGCCAAGGAAGTTACATAGTTTGGTCAAGCCCAGTGTAGACTACGCTGCCAGCTGAAATTCCT  
TTCTGGCAATTACCCTCCATGTATAGGTGATAATCGAGATCTGCTTGCCATTGGTGCCATGGCGCCCT  
GGGTAATCTACATGCTCATCCAGGCCTATAAGGTATTCAGAGAGGAAAAGTATCTCTGTGATGCCATC  
AGTGTGCTGATGTGATCTGGCAATATGGTTGCTGAAGAAGGGATATGGGCTGTGCCACGGTTCTGCAGG  
GAATGCCTATGCCTTCTGACACTCTAACCTCACACAGGACATGAAGTACCTGTATAGGGCCTGTAAG  
TTTGCTGAATGGTCTTAGAGTATGGAGAACATGGATGCAGAACCAGACACCCCTTTCTCTCTTTG  
AAGGAATGGCTGGAACAATATATTTCTGGCTGACCTGCTAGTCCCACAAAAGCCAGGTTCCCTGCATT  
TGAACT

**ACGCGT**ACGCGGCCGCTCGAGCAGAACTCATCTCAGAAGAGGATCTGGCAGCAAATGATATCTGGATT  
ACAAGGATGACGACGATAAGGTTTAA



[View online »](#)

**Protein Sequence:** >RC227716 protein sequence  
Red=Cloning site Green=Tags(s)

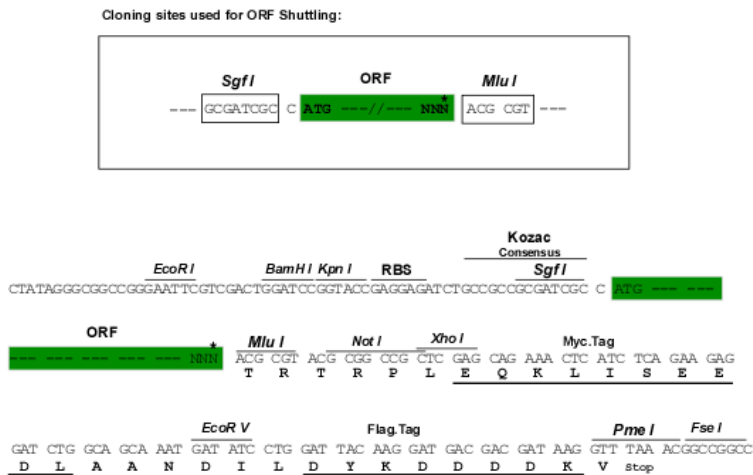
MAQRAFPNPYADYNKSLAEGYFDAAGRLTPEFSQRLTNKIRELLQOMERGLKSADPRDGTGYTGWAGIAV  
 LYLHLVDVFGDPAYLQLAHGYVKQSLNCLTKRSITFLCGDAGPLAVAVALYHKMNEKQAEDCITRLIHL  
 NKIDPHAPNEMLYGRIGYIYALLFVNKNFVGEKIPQSHIQICETILTSGENLARKRNFTAKSPLMYEWY  
 QEYYVGAAGHLAGIYYLMPQLQVVSQGLHSLVKPSVDYVCQLKFPVSGNYPPCIGDNRDLLVHWCHGAP  
 GVIYMLIQAYKVFREEKYLCDAVQCADVIWQYGLLKKGYGLCHGSAGNAYFLTLYNLTQDMKYLYRACK  
 FAEWCLEYGEHGCRTPDTPFSLFEGMAGTIYFLADLLVPTKARFPAPFL

TRTRPLEQKLISEEDLAANDILDYKDDDDKV

**Chromatograms:** [https://cdn.origene.com/chromatograms/mk6072\\_b06.zip](https://cdn.origene.com/chromatograms/mk6072_b06.zip)

**Restriction Sites:** SgfI-MluI

**Cloning Scheme:**



\* The last codon before the Stop codon of the ORF

**ACCN:** NM\_001136574

**ORF Size:** 1197 bp

**OTI Disclaimer:** The molecular sequence of this clone aligns with the gene accession number as a point of reference only. However, individual transcript sequences of the same gene can differ through naturally occurring variations (e.g. polymorphisms), each with its own valid existence. This clone is substantially in agreement with the reference, but a complete review of all prevailing variants is recommended prior to use. [More info](#)

**OTI Annotation:** This clone was engineered to express the complete ORF with an expression tag. Expression varies depending on the nature of the gene.

**Components:** The ORF clone is ion-exchange column purified and shipped in a 2D barcoded Matrix tube containing 10ug of transfection-ready, dried plasmid DNA (reconstitute with 100 ul of water).

**Reconstitution Method:**

1. Centrifuge at 5,000xg for 5min.
2. Carefully open the tube and add 100ul of sterile water to dissolve the DNA.
3. Close the tube and incubate for 10 minutes at room temperature.
4. Briefly vortex the tube and then do a quick spin (less than 5000xg) to concentrate the liquid at the bottom.
5. Store the suspended plasmid at -20°C. The DNA is stable for at least one year from date of shipping when stored at -20°C.

**RefSeq:** [NM\\_001136574.1](#), [NP\\_001130046.1](#)

**RefSeq Size:** 4531 bp

**RefSeq ORF:** 1200 bp

**Locus ID:** 10314

**UniProt ID:** [O43813](#)

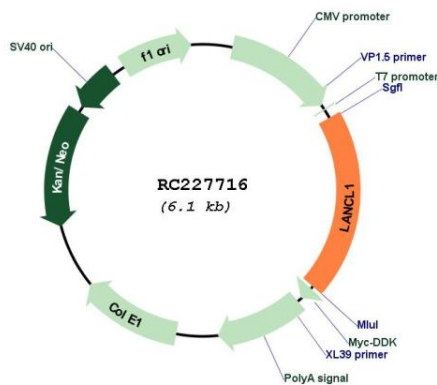
**Cytogenetics:** 2q34

**Protein Families:** Druggable Genome

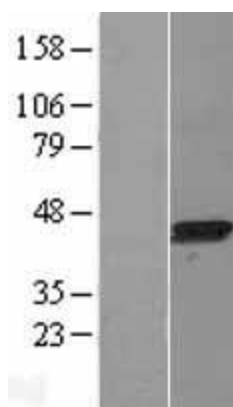
**MW:** 45.3 kDa

**Gene Summary:** This gene encodes a loosely associated peripheral membrane protein related to the LanC family of bacterial membrane-associated proteins involved in the biosynthesis of antimicrobial peptides. This protein may play a role as a peptide-modifying enzyme component in eukaryotic cells. Previously considered a member of the G-protein-coupled receptor superfamily, this protein is now in the LanC family. Multiple alternatively spliced variants, encoding the same protein, have been identified. [provided by RefSeq, Nov 2008]

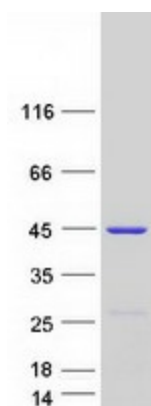
### Product images:



Circular map for RC227716



Western blot validation of overexpression lysate (Cat# [LY427929]) using anti-DDK antibody (Cat# [TA50011-100]). Left: Cell lysates from untransfected HEK293T cells; Right: Cell lysates from HEK293T cells transfected with RC227716 using transfection reagent MegaTran 2.0 (Cat# [TT210002]).



Coomassie blue staining of purified LANCL1 protein (Cat# [TP327716]). The protein was produced from HEK293T cells transfected with LANCL1 cDNA clone (Cat# RC227716) using MegaTran 2.0 (Cat# [TT210002]).