

Product datasheet for **RC227715**

RIZ1 (PRDM2) (NM_001135610) Human Tagged ORF Clone

Product data:

Product Type:	Expression Plasmids
Product Name:	RIZ1 (PRDM2) (NM_001135610) Human Tagged ORF Clone
Tag:	Myc-DDK
Symbol:	RIZ1
Synonyms:	HUMHOXY1; KMT8; KMT8A; MTB-ZF; RIZ; RIZ1; RIZ2
Mammalian Cell Selection:	Neomycin
Vector:	pCMV6-Entry (PS100001)
E. coli Selection:	Kanamycin (25 ug/mL)
ORF Nucleotide Sequence:	>RC227715 representing NM_001135610 Red=Cloning site Blue=ORF Green=Tags(s)

TTTTGTAATACGACTCACTATAGGGCGGCCGGAATTCGTCGACTGGATCCGGTACCGAGGAGATCTGCC
GCC**CGATCGCC**

ATGAATCAGAACACTACTGAGCCTGTGGCGGCCACCGAGACCCTGGCTGAGGTACCCGAACATGTGCTGC
GAGGACTCCGGAGGAAGTGAGGCTTTCCCTTCTGCTGTTGACAAGACCCGGATTGGTGTCTGGGCCAC
TAAACCAATTTAAAAGGCAAAAAATTTGGCCATTTGTTGGTGATAAGAAAAAAGATCTCAGGTTAAG
AATAATGTATACATGTGGGAGGTGATTACCCAAATTTGGGATGGATGTGCATTGATGCCACTGATCCAG
AGAAGGGAAACTGGCTGCGATATGTGAATTTGGCTTGCTCAGGAGAAGAGCAAAATTTATCCCACTGGA
AATCAACAGAGCCATTTACTATAAACTTTAAAGCCAATCGCGCCGGGCGAGGAGCTCCTGGTCTGGTAC
AATGGGGAAGACAACCTGAGATAGCAGCTGCGATTGAGGAAGAGCGAGCCAGCGCCCGGAGCAAGCGGA
GCTCCCCAAGAGCCGAAAGCTACAGCCTCCGCTTGGCGTCCCGATGCTCTCCACCAGCGGCCCGTAC
ATCACCAGGCAGTATAGGAAGGTCAAAGCTCCAGCTGCAGCCCAGTTCCAGGGACCATTCTCAAAGAGT
AGACACTCTGGCTGCTCCCTGACAGCACCTGAAGTGACCTGGAATCAG

ACGCGTACGCGGCGCTCGAGCAGAACTCATCTCAGAAGAGGATCTGGCAGCAATGATATCCTGGATT
ACAAGGATGACGACGATAAGGTTTAA



[View online »](#)

Protein Sequence: >RC227715 representing NM_001135610
Red=Cloning site Green=Tags(s)

MNQNTTEPVAATETLAEVPEHVLRLPEEVRLFPSAVDKTRIGVWATKPKILGKKKFGPFVGDKKKRSQVK
 NNVYMWEVYYPNLGWMCIDATDPEKGNLRYVNWACSGEEQNLFPLEINRAIYYKTLKPIAPGEE LLVWY
 NGEDNPEIAAAIEEERASARSKRSSPKSRKATASAWRPDALHQRPRTPSGSIGRSKLQLQPSSRDHSSKS
 RHSGCSLTAPEVTWNQ

TRTRPLEQKLISEEDLAANDILDYKDDDDKV

Chromatograms: https://cdn.origene.com/chromatograms/ja1260_g11.zip

Restriction Sites: SgfI-MluI

Cloning Scheme:



ACCN: NM_001135610

ORF Size: 678 bp

OTI Disclaimer: The molecular sequence of this clone aligns with the gene accession number as a point of reference only. However, individual transcript sequences of the same gene can differ through naturally occurring variations (e.g. polymorphisms), each with its own valid existence. This clone is substantially in agreement with the reference, but a complete review of all prevailing variants is recommended prior to use. [More info](#)

OTI Annotation: This clone was engineered to express the complete ORF with an expression tag. Expression varies depending on the nature of the gene.

Components: The ORF clone is ion-exchange column purified and shipped in a 2D barcoded Matrix tube containing 10ug of transfection-ready, dried plasmid DNA (reconstitute with 100 ul of water).

Reconstitution Method:

1. Centrifuge at 5,000xg for 5min.
2. Carefully open the tube and add 100ul of sterile water to dissolve the DNA.
3. Close the tube and incubate for 10 minutes at room temperature.
4. Briefly vortex the tube and then do a quick spin (less than 5000xg) to concentrate the liquid at the bottom.
5. Store the suspended plasmid at -20°C. The DNA is stable for at least one year from date of shipping when stored at -20°C.

RefSeq: [NM_001135610.2](#)

RefSeq ORF: 681 bp

Locus ID: 7799

UniProt ID: [Q13029](#)

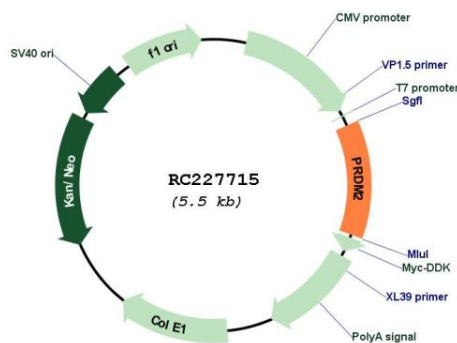
Cytogenetics: 1p36.21

Protein Families: Druggable Genome

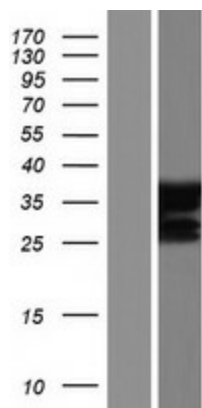
MW: 25.3 kDa

Gene Summary: This tumor suppressor gene is a member of a nuclear histone/protein methyltransferase superfamily. It encodes a zinc finger protein that can bind to retinoblastoma protein, estrogen receptor, and the TPA-responsive element (MTE) of the heme-oxygenase-1 gene. Although the functions of this protein have not been fully characterized, it may (1) play a role in transcriptional regulation during neuronal differentiation and pathogenesis of retinoblastoma, (2) act as a transcriptional activator of the heme-oxygenase-1 gene, and (3) be a specific effector of estrogen action. Multiple transcript variants encoding different isoforms have been found for this gene. [provided by RefSeq, Oct 2008]

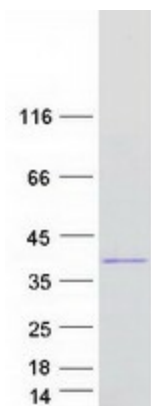
Product images:



Circular map for RC227715



Western blot validation of overexpression lysate (Cat# [LY427635]) using anti-DDK antibody (Cat# [TA50011-100]). Left: Cell lysates from untransfected HEK293T cells; Right: Cell lysates from HEK293T cells transfected with RC227715 using transfection reagent MegaTran 2.0 (Cat# [TT210002]).



Coomassie blue staining of purified PRDM2 protein (Cat# [TP327715]). The protein was produced from HEK293T cells transfected with PRDM2 cDNA clone (Cat# RC227715) using MegaTran 2.0 (Cat# [TT210002]).