

Product datasheet for **RC227709**

JMJD5 (KDM8) (NM_001145348) Human Tagged ORF Clone

Product data:

Product Type:	Expression Plasmids
Product Name:	JMJD5 (KDM8) (NM_001145348) Human Tagged ORF Clone
Tag:	Myc-DDK
Symbol:	JMJD5
Synonyms:	JMJD5
Mammalian Cell Selection:	Neomycin
Vector:	pCMV6-Entry (PS100001)
E. coli Selection:	Kanamycin (25 ug/mL)



[View online »](#)

ORF Nucleotide Sequence:

>RC227709 representing NM_001145348
 Red=Cloning site Blue=ORF Green=Tags(s)

TTTTGTAATACGACTCACTATAGGGCGGCCGGGAATTCGTCGACTGGATCCGGTACCGAGGAGATCTGCC
 GCC**CGCATCGCC**

ATGAGCCGCGAGAAATGCAGCCCGGGGAAGCGCTGAGGAGGAAGGGGTCTGAGGCCTCGGGGCTCA
 AGGCCAGTGCGGGGCACGGGACTGAACCAGCTGGTGGTGGCCGATGGCTGGAGACACCCACTGCCCCGC
 AGAGCCCTCGCCAGAGAAGGCACCTTTATGGGAGGCCCTCAGGGCGCTCCTGCCGCACAGTAAAGAAGAC
 CTGAAGTTGGACCTCGGGGAGAAAGTGGAGAGGAGCGTGGTGACATTGTTGCAGCGAGCCACTGAGCTCT
 TCTACGAGGGCAGGAGGGACGAGTGTCTGCAGAGCAGCGAGGTGATCCTGGACTACTCCTGGGAGAAGCT
 CAACACGGGCACATGGCAGGACGTAGACAAAGACTGGCGCCGGTCTACGCCATCGGCTGCCTCCTGAAA
 GCCCTGTGTCTGTGCCAGGCACCTGAGGATGCCAACACTGTGGCCGACGCCCTGCGGGTCTGTGACATGG
 GCCTGCTGATGGGGCAGCCATCCTGGGGACATCCTTCTAAAGTCGCTGCCATCCTCCAGACACACCT
 CCCTGAAAGAGGCTGCCCGTGGCTCCCTCCCAGAGCAACCCTGCACAAAGAAAGCAAGGGCGGACCAT
 GGTTTGATTCCAGATGTGAAGTTAGAAAAACAGTCCCCCGGCTGCACCGTCCGTCCCTCCAGCATTTC
 GGGAGCAGTTTTTGGTTCAGGGAGGCCGTGATCCTGAAAGGCGTGGCTGACCACTGGCCGTGCATGCA
 GAAGTGGAGTTTGGAGTATATCCAGGAGATCGCTGGTGGCCAACTGTCCAGTGGAAAGTTGGTTCGAGG
 TACACAGATGAGGAATGGTCCCAGACCCTCATGACGGTCAACGAGTTCATCAGCAATACATCGTGAATG
 AGCCAAGGGACGTCGGGTACCTTGCTCAGCACCAGCTCTTTGACCAGATCCCGGAGTTGAAGCAGGACAT
 CAGCATCCCCGACTACTGCAGCCTGGGCGATGGGAGGAGGAGGAAATCACCATCAATGCCTGGTTTGGT
 CCCCAGGGAACCATCTCCCCTACATCAGGATCCCAGCAAACTTCTAGTGCAGGTGATGGGGAGGA
 AGTACATCCGGCTGTATCCCGCAGGAGTCAGGGGCTCTGTACCCTCATGACACGCACCTTCTCCATAA
 CACGAGCCAGGTTGACGTGGAGAATCCCGACTGGAAAAGTTCCCAAGTTTGCCAAGGCCCCATTCTCTG
 TCTGCATCCTGTCTCCTGGAGAGATCCTGTTATCCCGTGAATACTGGCATTACGTGCGGGCTCTGG
 ATTTGAGCTTCTCGGTACGTTCTGGTGGTCG

ACGCGTACGCGGCCGCTCGAGCAGAACTCATCTCAGAAGAGGATCTGGCAGCAATGATATCCTGGATT
 ACAAGGATGACGACGATAAGGTTTAA

Protein Sequence:

>RC227709 representing NM_001145348
 Red=Cloning site Green=Tags(s)

MSREKCSPEGAEIEGRGSEASGLKASAGHGTEPAGGGPMAGDTHCPAEPLAREGLWEALRALLPHSKED
 LKLDLGEKVERS VVTLQRATELFYEGRRDECLQSSEVILDYSWEKLNLTGWQDVKDWRVYVYIGCLLK
 ALCLCQAPEDANTVAAALRVCDMGLLMGAAILGDILLKVAAILQTHLPGKRPARGSLPEQPCTKKARADH
 GLIPDVKLEKTVPRHLRPSLQHFREQFLVGRPVILKGVADHWPCMQKWSLEYIQEIAGCRTVPVEVGSR
 YTDEEWSQTLMTVNEFISKYIVNEPRDVGYLEAQHQLFDQIPELQKQDISIPDYCSLGDGEEEEITINAWFG
 PQGTISPLHQDPQONFLVQVMGRKYIRLYSPQESGALYPHDTHLLHNTSQVDVENPDLEKFPKFAKAPFL
 SCILSPGEILFIPVKYWHYVRALDLSFSVSFWWS

TRTRPLEQKLISEEDLAANDILDYKDDDDKV

Chromatograms:

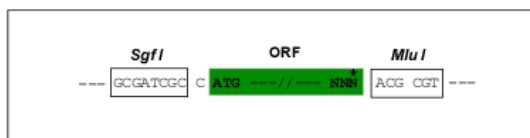
https://cdn.origene.com/chromatograms/mg3809_f02.zip

Restriction Sites:

Sgfl-Mlul

Cloning Scheme:

Cloning sites used for ORF Shutting:



* The last codon before the Stop codon of the ORF

ACCN: NM_001145348

ORF Size: 1362 bp

OTI Disclaimer: The molecular sequence of this clone aligns with the gene accession number as a point of reference only. However, individual transcript sequences of the same gene can differ through naturally occurring variations (e.g. polymorphisms), each with its own valid existence. This clone is substantially in agreement with the reference, but a complete review of all prevailing variants is recommended prior to use. [More info](#)

OTI Annotation: This clone was engineered to express the complete ORF with an expression tag. Expression varies depending on the nature of the gene.

Components: The ORF clone is ion-exchange column purified and shipped in a 2D barcoded Matrix tube containing 10ug of transfection-ready, dried plasmid DNA (reconstitute with 100 ul of water).

- Reconstitution Method:**
1. Centrifuge at 5,000xg for 5min.
 2. Carefully open the tube and add 100ul of sterile water to dissolve the DNA.
 3. Close the tube and incubate for 10 minutes at room temperature.
 4. Briefly vortex the tube and then do a quick spin (less than 5000xg) to concentrate the liquid at the bottom.
 5. Store the suspended plasmid at -20°C. The DNA is stable for at least one year from date of shipping when stored at -20°C.

RefSeq: [NM_001145348.1](#), [NP_001138820.1](#)
RefSeq ORF: 1365 bp

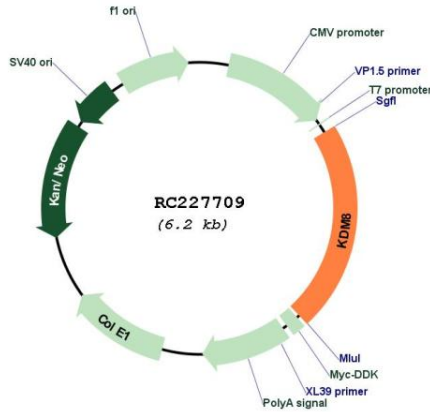
Locus ID: 79831

UniProt ID: [Q8N371](#)
Cytogenetics: 16p12.1

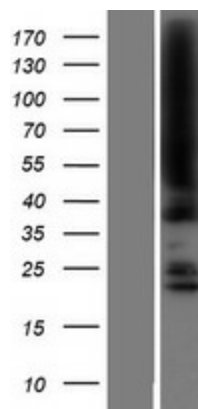
MW: 50.7 kDa

Gene Summary:

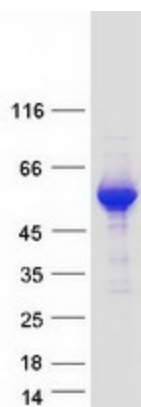
This gene likely encodes a histone lysine demethylase. Studies of a similar protein in mouse indicate a potential role for this protein as a tumor suppressor. Alternatively spliced transcript variants have been described.[provided by RefSeq, Feb 2009]

Product images:


Circular map for RC227709



Western blot validation of overexpression lysate (Cat# [LY428835]) using anti-DDK antibody (Cat# [TA50011-100]). Left: Cell lysates from untransfected HEK293T cells; Right: Cell lysates from HEK293T cells transfected with RC227709 using transfection reagent MegaTran 2.0 (Cat# [TT210002]).



Coomassie blue staining of purified KDM8 protein (Cat# [TP327709]). The protein was produced from HEK293T cells transfected with KDM8 cDNA clone (Cat# RC227709) using MegaTran 2.0 (Cat# [TT210002]).