

## Product datasheet for RC227704

### Treacher Collins syndrome protein (TCOF1) (NM\_001135245) Human Tagged ORF Clone

#### Product data:

Product Type:	Expression Plasmids
Product Name:	Treacher Collins syndrome protein (TCOF1) (NM_001135245) Human Tagged ORF Clone
Tag:	Myc-DDK
Symbol:	TCOF1
Synonyms:	MFD1; TCS; TCS1; treacle
Vector:	pCMV6-Entry (PS100001)
E. coli Selection:	Kanamycin (25 ug/mL)
Cell Selection:	Neomycin
ORF Nucleotide Sequence:	>RC227704 representing NM_001135245 Red=Cloning site Blue=ORF Green=Tags(s)

TTTTGTAATACGACTCACTATAGGGCGGCCGGAATTCGTCGACTGGATCCGGTACCGAGGAGATCTGCC  
GCC**CGATCGCC**

ATGGCCGAGGCCAGGAAGCGGGGAGCTACTTCCCCTGATCTACCACCATCTGCTGCGGGCTGGCTATG  
TGGTGGCGCGCGGAAGTGAAGGAGCAGAGCGGCCAGAAGTGTTCCTGGCTCAGCCCGTAACCCCTTCT  
GGACATCTATACACTGGCAACAAACCTCAGAGCTTGGTCGGAAGCGGAAGGCAGAGGAAGATGCGGCA  
CTGCAAGCTAAGAAAACCGTGTGTGACACCCATCAGCACCTCGGAGAGCTCGGAAGAGGAGGAAGAAG  
CAGAAGCCGAAACCGCCAAAGCCACCCCAAGACTAGCATCTACCAACTCCTCAGTCTGGGGCGGACTT  
GCCATCAAGCATGAAAGAAAAAGCCAAGGCAGAGACAGAGAAAGCTGGCAAGACTGGGAATTCCATGCCA  
CACCCCTGCCACTGGGAAGACGGTGGCAACCTTTTCTGGGAAGTCTCCAGGAAGTCAGCAGAGCCCT  
CAGCAAATACTACGTTGGTCTCAGAAACTGAGGAGGAGGGCAGCGTCCCGGCTTTGGAGCTGTGCCAA  
GCCTGGGATGGTGTGACGGGCCAGGCCGACAGCTCCAGCGAGGACACCTCCAGCTCCAGTATGAGACA  
GACGTGGAGGTAAGGCCTCTGAAAAAATCTCCAGGTCAGAGCTGCCTCAGCCCTGCCAAGGGGACCC  
CTGGGAAAGGGGCTACCCAGCACCCCTGGGAAGGCAGGGCTGTAGCCTCCAGACCAAGGCAGGGAA  
GCCAGAGGAGACTCAGAGAGCAGCAGCGAGGAGTCTGACAGTGAGGAGGAGACGCCAGCTGCCAAG  
GCCCTGCTTCAGGCGAAGGCCTCAGAAAAACCTCTCAGGTCGGAGCTGCCTCAGCCCTGCCAAGGAGT  
CCCCCAGGAAAGGAGCTGCCCCAGCGCCCTGGGAAGACAGGGCCTGCAGTTGCCAAGGCCAGGCGGG  
GAAGCGGGAGGAGGACTCGCAGAGCAGCAGCGAGGAATCGGACAGTGAGGAGGAGGCGCCTGCTCAGGCG  
AAGCCTTCAGGGAAGGCCCCAGGTGAGCCGCTCGGCCCTGCCAAGGAGTCCCCAGGAAAGGGG  
CTGCCCCAGCACCTCTAGGAAAACAGGGCCTGCAGCCGCCAGGTCCAGTGGGAAAGCAGGAGGAGGA  
CTCAAGAAGCAGCAGCGAGGAGTCAGACAGTGACAGAGAGGCACTGGCAGCCATGAATGCAGCTCAGGTG  
AAGCCCTTGGGAAAAGCCCGAGTGAACCTGCCTCTACCATGGGCATGGGGCCCTTGGGAAAAGGCG  
CCGGCCAGTGCCACCCGGAAGGTGGGCCTGCAACCCCTCAGCCAGGTGGGGAAGTGGGAGGAGGA  
CTCAGAGAGCAGTAGTGAGGAGTCATCAGACAGAGTGTGGAGAGGTGCCACAGCTGTGGCCCGGCT  
CAGGAAAAGTCTTGGGGAACATCTCCAGGCCAAACCCACTCCAGTCTGCCAAGGGGCCCTCAGA



[View online »](#)

AGGCAGGGCCTGTAGCCGTCCAGGTCAAGGCTGAAAAGCCCATGGACAACCTCGGAGAGCAGCGAGGAGTC  
 ATCGGACAGTGC GGACAGT GAGGAGGCACCAGCAGCCATGACTGCAGCTCAGGCAAAACCAGCTCTGAAA  
 ATTCCTCAGACCAAGGCCTGCCAAAGAAAACCAATACCACTGCATCTGCCAAGGTGCGCCCTGTGCGAG  
 TGGGCACCAAGCCCCCGGAAAGCAGGAACTGCGACTTCTCCAGCAGGCTCATCCCCAGCTGTGGCTGG  
 GGGACCCAGAGACCAGCAGAGGATTCTTCAAGCAGT GAGGAATCAGATAGT GAGGAAGAGAAGACAGGT  
 CTTGCAGTAACCGTGGGACAGGCAAAGTCTGTGGGAAAGGCCTCCAGGTGAAAGCAGCCTCAGTGCCCTG  
 TCAAGGGTCCCTGGGGCAAGGACTGCTCCAGTACTCCCTGGGAGACGGGGCCTACAGTCAACCCAGCT  
 GAAAGCTGAAAAGCAGGAAGACTCTGAGAGCAGT GAGGAGGAATCAGACAGT GAGGAAGCAGCTGCATCT  
 CCAGCACAGGTGAAAACCTCAGTAAAGAAAACCCAGGCCAAAGCCAACCCAGCTGCCGCCAGAGCACCTT  
 CAGCAAAAGGGACAATTTAGCCCTGGAAAAGTTGCTACTGCAGCTGCTCAAGCCAAGCAGAGGTCTCC  
 ATCCAAGGTGAAGCCACCAGTGAGAAACCCCGAAGCAGTACCGTCTTGGCGAGGGGCCAGCATCTGTG  
 CCATCTGTGGGAAAGCCGTGGCTACAGCAGCTCAGGCCAGACAGGGCCAGAGGAGGACTCAGGGAGCA  
 GTGAGGAGGAGT CAGACAGT GAGGAGGAGGCGGAGACGCTGGCTCAGGTGAAGCCTTCAGGAAGACCCA  
 CCAGATCAGAGCTGCCTGGCTCCTGCCAAGGAGTCCCCAGGAAAGGGCTGCCCAACACCTCCTGGG  
 AAGACAGGGCCTTCGGCTGCCAGGCAGGAAGCAGGATGACTCAGGGAGCAGCAGCGAGGAATCAGACA  
 GTGATGGGGAGGCACCGCAGCTGTGACCTCTGCCAGGTGATTAACCCCTCTGATTTTTGTCCAGCC  
 TAATCGTAGTCCAGCTGGCCAGCTGCTACACCCGCACAAGCCAGGCTGCAAGCACCCCGAGGAAGGCC  
 CGAGCCTCGGAGAGCACAGCCAGGAGCTCCTCCTCCGAGAGCGAGGATGAGGACGTGATCCCCGCTACAC  
 AGTGCTTGACTCCTGGCATCAGAACCAATGTGGTGACCATGCCCACTGCCACCCAAGAATAGCCCCCAA  
 AGCCAGCATGGCTGGGGCCAGCAGCAGCAAGGAGTCCAGTCGGATATCAGATGGCAAGAAACAGGAGGGA  
 CCAGCCACTCAGGTGTCAAAGAAGAACCAGCTTCCCTCCACTGACCCAGGCTGCCCTGAAGTCTCTCG  
 CCCAGAAAGCCAGT GAGGCTCAGCCTCCTGTTGCCAGGACCCAGCCTTCAAGTGGGGTTGACAGTGTCTG  
 GGAACAACCTCCCTGCAACAAGTCCCAGAGCACCTCCGTCAGGCCAAAGGGACCAACAAGCTCAGAAAA  
 CCTAAGCTTCTGAGGTCCAGCAGGCCACCAAGCCCTGAGAGCTCAGATGACAGT GAGGACAGCAGCG  
 ACAGTTCTTCAGGGAGT GAGGAAGATGGTGAAGGGCCCCAGGGGCAAGTCAGCCACACGCTGGTAGG  
 TCCCACCCCTCCAGGACAGAGACCTGGTGGAGGAGACCGCAGCAGAGTCCAGCGAGGATGATGTGGTG  
 GCGCCATCCCAGTCTCTCCTCTCAGGTTATATGACCCCTGGACTAACCCAGCCAATTCAGGCCCTCAA  
 AAGCCACTCCCAAGCTAGACTCCAGCCCTCAGTTTCTCTACTCTGGCCGCAAAGATGACCCAGATGG  
 CAAGCAGGAGGCAAGGCCCAACAGGCAGCAGGCATGTTGTCCCCTAAAACAGGTGGAAAAGAGGCTGCT  
 TCAGGCACCACACCTCAGAAGTCCCGAAGCCCAAGAAAGGGGCTGGGAACCCCAAGCCTCAACCTGG  
 CGCTGCAAGCAACATCACCCAGTGCTCCTGGGCCAACCTGGCCCTGAATGAGGCCAGGTGCAGGC  
 CTCAGTGGTGAAGTCTGACTGAGCTGCTGGAACAGGAAAGAAAGAGGTGGTGGACACCACCAAGGAG  
 AGCAGCAGGAAGGGCTGGGAGAGCCGAAGCGGAAGCTATCGGGAGACCAGCCAGCTGCCAGGACCCCA  
 GGAGCAAGAAGAAGAAGCTGGGGCCGGGGAAGGTGGGGAGGCTCTGTTTCCCAGAAAAGACCTC  
 CACGACTTCCAAGGGGAAAGCAAGAGAGACAAAGCAAGTGGTGTCAAGGAGAAGAAAGGGAAGGGG  
 TCTCTGGCTCCCAAGGGGCAAGGACGAGCCAGAAGAGGAGCTTCAGAAGGGGATGGGGACGTTGAAG  
 GTGGAGATCAAAGCAACCAAGAGCAAGAAGGAGAAGAAGAAATCCGACAAGAGAAAAAAGACAAAGA  
 AAAAAAAGAAAAGAAGAAGCAAAAAAGCCCTCAACCAAAGATTCTGAGTCAACCGTCCCAGAAGAAA  
 AAGAAGAAAAGAAGAAGACAGCAGAGCAGACTGTA

ACGCGTACGCGGCCGCTCGAGCAGAACTCATCTCAGAAGAGGATCTGGCAGCAATGATATCCTGGATT  
 ACAAGGATGACGACGATAAGGTTAA

Protein Sequence: >RC227704 representing NM\_001135245  
 Red=Cloning site Green=Tags(s)

MAEARKRRELLPLIYHLLRAGYVRAAREVKEQSGQKCFLAQPVTLLDIYTHWQQTSELGRKRKAEDDAA  
 LQAKKTRVSDPISTSESSEEEEEAEATAKATPRLASTNSSVLGADLPSSMKEKAKAETEKAGKTGNSMP  
 HPATGKTVANLLSGKSPRKSAPESANTTLVSETEEEGSPAFGAAAKPGMVSAGQADSSSEDTSSSSDET  
 DVEVKASEKILQVRAASAPAKGTPGKGATPAPPKGAGAVASQTKAGKPEEDESSEESSEEDSEEEPAQA  
 ALLQAKASGKTSQVGAASAPAKESPRKGAAPAPPKGTGPAVAKAQAGKREEDSQQSSSEESSEEEPAQA  
 KPSGKAPQVRAASAPAKESPRKGAAPAPRKTGPAQAQVQVQKQEEEDSRSSSEESDSDREALAAMNAAQV  
 KPLGKSPQVQPASTMGMPGKAGGAGVPPGKVGPAATPSAQVQKWEEDSESSEESDSDSDGEVPTAVAPA  
 QEKSLGNILQAKPTSSPAKPPQKAGPVAVQVKAEPMDNSESEESDSDADSEEAPAAMTAAQAKPALK  
 IPQTKACPKKTNTTASAKVAPVRVGTQAPRKAGTATSPAGSSPAVAGGTQRPADSSSSEESDSEEEKTG  
 LAVTVGQAKSVGKGLQVKAASVPVKGSLGQGTAPVLPKGTGPTVTQVKAQKQEDSESSEESDSEEAAS  
 PAQVKTSVKKTQAKANPAARAPSAKGTISAPGVVTTAAQAKQRSPSKVPPVRNPQNSTVLARGPASV  
 PSYGKAVATAAQQTGPEEDSGSSEESDSEEEAETLAQVKPSGKTHQIRAALAPAKESPRKGAAPTPPG  
 KTGPSAAQAGKQDDSGSSSEESDSDGEAPAAVTSQVVIKPLIFVDPNRSAPGPAATPAQAQAASPRKA  
 RASESTARSSSESEDEDVIPATQCLTPGIRTNVVTMPTAHPRIAPKASMAGASSKESRISDGKKQEG  
 PATQVSKKNPASLPLTQAALKVLAQKASEAQPPVARTQPSGVD SAVGTLPATSPQSTSVQAKGTNLRK  
 PKLPEVQQAATKAPESSDSEDSDSSSGSEEDGEQPQAKSAHTLVGPTPSRTETLVEETAESSEDDVV  
 APSQSLLSGYMTPGLTPANSQAKATPKLDSSPSVSTLAAKDDPDGKQEAQPQQAAGMLSPKTGGKEAA  
 SGTTPQKSRPKKKGAGNPQASTLALQSNITQCLLQGPWPLNEAQVQASVVKVLTLELQERKKVDDTTKE  
 SSRKGWESRKRKLSGDQPAARTPRSKKKKLLGAGEGGEASVSPEKSTTSK GKAKRDKASGDVKEKKGKG  
 SLGSQGAKDEPEEELQKGMGTVEGGDQSNPKSKKEKKKSDKRKKDKEKKEKKKAKKASTKDSSEPSQKK  
 KKKKKKTAEQTV

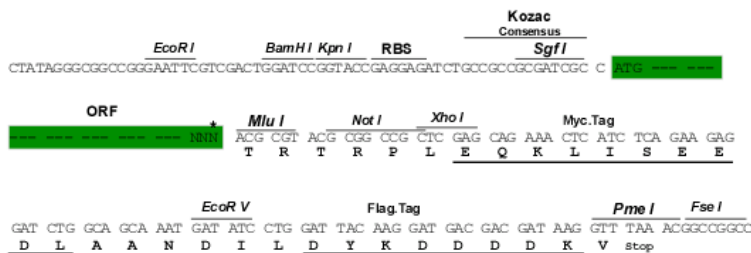
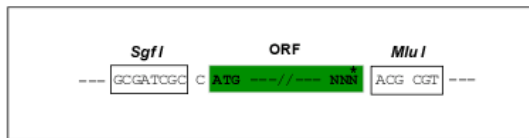
TRTRPLEQKLISEEDLAANDILDYKDDDDKV

Restriction Sites:

SgfI-MluI

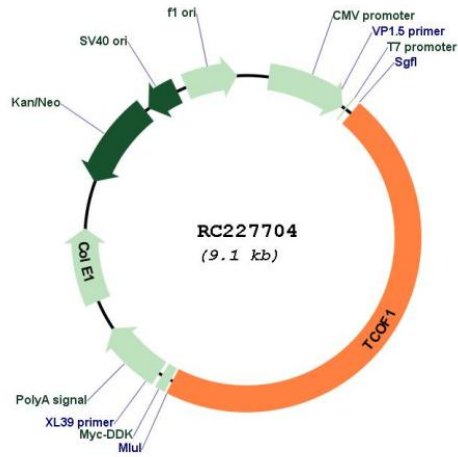
Cloning Scheme:

Cloning sites used for ORF Shuttling:



\* The last codon before the Stop codon of the ORF

Plasmid Map:



ACCN: NM\_001135245

ORF Size: 4236 bp

OTI Disclaimer: The molecular sequence of this clone aligns with the gene accession number as a point of reference only. However, individual transcript sequences of the same gene can differ through naturally occurring variations (e.g. polymorphisms), each with its own valid existence. This clone is substantially in agreement with the reference, but a complete review of all prevailing variants is recommended prior to use. [More info](#)

OTI Annotation: This clone was engineered to express the complete ORF with an expression tag. Expression varies depending on the nature of the gene.

Components: The ORF clone is ion-exchange column purified and shipped in a 2D barcoded Matrix tube containing 10ug of transfection-ready, dried plasmid DNA (reconstitute with 100 ul of water).

**Reconstitution Method:**

1. Centrifuge at 5,000xg for 5min.
2. Carefully open the tube and add 100ul of sterile water to dissolve the DNA.
3. Close the tube and incubate for 10 minutes at room temperature.
4. Briefly vortex the tube and then do a quick spin (less than 5000xg) to concentrate the liquid at the bottom.
5. Store the suspended plasmid at -20°C. The DNA is stable for at least one year from date of shipping when stored at -20°C.

**RefSeq:** [NM\\_001135245.2](#)

**RefSeq ORF:** 4239 bp

**Locus ID:** 6949

**UniProt ID:** [Q13428](#)

**Cytogenetics:** 5q32-q33.1

**Protein Families:** Druggable Genome, Stem cell - Pluripotency

**MW:** 144.2 kDa

**Gene Summary:** This gene encodes a nucleolar protein with a LIS1 homology domain. The protein is involved in ribosomal DNA gene transcription through its interaction with upstream binding factor (UBF). Mutations in this gene have been associated with Treacher Collins syndrome, a disorder which includes abnormal craniofacial development. Multiple transcript variants encoding different isoforms have been found for this gene. [provided by RefSeq, Sep 2008]