

Product datasheet for **RC227699**

PPHLN1 (NM_001143789) Human Tagged ORF Clone

Product data:

Product Type:	Expression Plasmids
Product Name:	PPHLN1 (NM_001143789) Human Tagged ORF Clone
Tag:	Myc-DDK
Symbol:	PPHLN1
Synonyms:	CR; HSPC206; HSPC232
Mammalian Cell Selection:	Neomycin
Vector:	pCMV6-Entry (PS100001)
E. coli Selection:	Kanamycin (25 ug/mL)
ORF Nucleotide Sequence:	>RC227699 representing NM_001143789 Red=Cloning site Blue=ORF Green=Tags(s)

TTTTGTAATACGACTCACTATAGGGCGCCGGGAATTCGTCGACTGGATCCGGTACCGAGGAGATCTGCC
GCC**CGATCGCC**

ATGTGGTCTGAGGGACGATATGAATATGAAAGAATTCGAGAGAACGAGCACCTCCTCGAAGTCATCCCA
GTGATGAATCTGGTTATAGATGGACAAGAGACGATCATTCTGCAAGCAGGCAACCTGAATACAGGGACAT
GAGAGATGGCTTTAGAAGAAAAAGTTTCTACTCTCCATTATGCGAGAGAGCGGTCTCCTATAAAAGG
GACAATACTTTTTTCAGAGAATCACCTGTTGGCCGAAAGGATTCTCCACACAGCAGATCTGGTCCAGTG
TCAGTAGCAGAAGCTACTCTCCAGAAAGGAGCAAATCATACTCTTCCATCAGTCTCAACATAGAAATAA
AGAGAGGCCTGTCCAGTCTTTGAAAACATCAAGAGATACTTCACCCTCAAGTGGTTCAGCAGTTTCTTCA
TCAAAGGTGTTAGACAAACCCAGTAGGCTAACTGAAAAGGAACTTGTGAGGCTGCAAGCAAGTGGGCTG
CTGAAAAGCTAGAGAAATCAGATGAAAGTAACTTGCCCTGAAATTTCTGAGTATGAGGCGGGATCCACAGC
ACCATTGTTTACTGACCAGCCAGAGGAACCTGAGTCAAACACAACACATGGGATAGAATTTTGAAGAT
AGTCAGCTAACCACTCGCTCTAAAGCAATAGCATCAAAAACAAAGAGATTGAACAGGTTTACCGACAAG
ACTGTGAACTTTCCGGATGGTGGTAAAAATGCTGATTGAAAAGATCCTTCATTAGAAAAGTCTATACA
GTTTGCATTGAGGCAGAATTTACATGAAATAGGTGAGCGGTGTGTTGAAGAACTCAAGCATTTCATTGCA
GAGTATGATACTTCCACTCAAGATTTTGGAGAGCCTTTT

ACGCGTACGCGGCCGCTCGAGCAGAAACTCATCTCAGAAGAGGATCTGGCAGCAAATGATATCCTGGATT
ACAAGGATGACGACGATAAGGTTTAA



[View online »](#)

Reconstitution Method:

1. Centrifuge at 5,000xg for 5min.
2. Carefully open the tube and add 100ul of sterile water to dissolve the DNA.
3. Close the tube and incubate for 10 minutes at room temperature.
4. Briefly vortex the tube and then do a quick spin (less than 5000xg) to concentrate the liquid at the bottom.
5. Store the suspended plasmid at -20°C. The DNA is stable for at least one year from date of shipping when stored at -20°C.

RefSeq: [NM_001143789.1](#), [NP_001137261.1](#)

RefSeq ORF: 882 bp

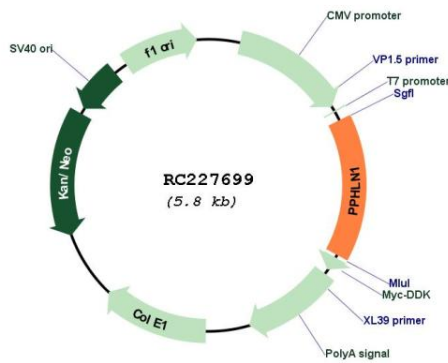
Locus ID: 51535

Cytogenetics: 12q12

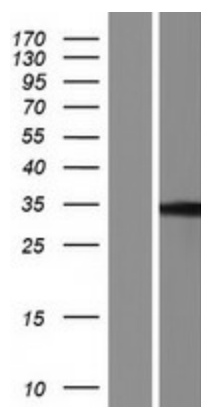
MW: 33.7 kDa

Gene Summary: The protein encoded by this gene is one of the several proteins that become sequentially incorporated into the cornified cell envelope during the terminal differentiation of keratinocyte at the outer layers of epidermis. This protein interacts with periplakin, which is known as a precursor of the cornified cell envelope. The cellular localization pattern and insolubility of this protein suggest that it may play a role in epithelial differentiation and contribute to epidermal integrity and barrier formation. Multiple alternatively spliced transcript variants encoding distinct isoforms have been observed. [provided by RefSeq, Jul 2008]

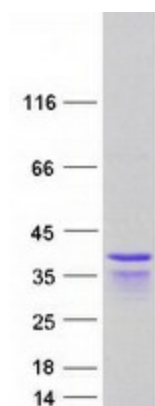
Product images:



Circular map for RC227699



Western blot validation of overexpression lysate (Cat# [LY428349]) using anti-DDK antibody (Cat# [TA50011-100]). Left: Cell lysates from untransfected HEK293T cells; Right: Cell lysates from HEK293T cells transfected with RC227699 using transfection reagent MegaTran 2.0 (Cat# [TT210002]).



Coomassie blue staining of purified PPHLN1 protein (Cat# [TP327699]). The protein was produced from HEK293T cells transfected with PPHLN1 cDNA clone (Cat# RC227699) using MegaTran 2.0 (Cat# [TT210002]).