

## Product datasheet for **RC227675**

### **YIF1B (NM\_001145462) Human Tagged ORF Clone**

#### Product data:

Product Type:	Expression Plasmids
Product Name:	YIF1B (NM_001145462) Human Tagged ORF Clone
Tag:	Myc-DDK
Symbol:	YIF1B
Synonyms:	FinGER8
Mammalian Cell Selection:	Neomycin
Vector:	pCMV6-Entry (PS100001)
E. coli Selection:	Kanamycin (25 ug/mL)
ORF Nucleotide Sequence:	>RC227675 ORF sequence Red=Cloning site Blue=ORF Green=Tags(s)

TTTTGTAATACGACTCACTATAGGGCGGCCGGAATTCGTCGACTGGATCCGGTACCGAGGAGATCTGCC  
GCC**CGCATCGCC**

ATGCAACCCGGCAGGCTTGGCGGGCGGGCTGCGGGGACGCCCCGGCTGCGTAAGTGGCCCTCGAAGCGGA  
GGATCCCTGTGTCCAGCCGGGCATGGCCGACCCACCAGCTTTTCGATGACACAAGTTCAGCCCAGAG  
CCGGGGCTATGGGGCCAGCGGGCACCTGGTGGCCTGAGTTATCCTGCAGCCTCTCCACGCCCCATGCA  
GCCTTCTGGCTGACCCGGTGTCCAACATGGCCATGGCCTATGGGAGCAGCCTGGCCGCGCAGGGCAAGG  
AGCTGGTGGATAAGAATCGACCGCTTCATCCCATCACCAAGCTCAAGTATTACTTTGCTGTGGACAC  
CATGTATGTGGGCAGAAAGCTGGCCTGCTGTTCTTCCCCTACCTACACCAGGACTGGGAAGTGCAGTAC  
CAACAGGACACCCGGTGGCCCCCGCTTTGACGTCAATGCCCGGACCTCTACATTCCAGCAATGGCTT  
TCATCACCTACGTTTTGGTGGCTGGTCTTGGCCTGGGGACCCAGGATAGGTTCTCCCAGACCTCCTGGG  
GCTGCAAGCGAGCTCAGCCCTGGCCTGGCTGACCCTGGAGGTGCTGGCCATCCTGCTCAGCCTCTATCTG  
GTCAGTGTCAACACCGACCTCACCACCATCGACCTGGTGGCCTTCTTGGGCTACAAATATGTCGGGATGA  
TTGGCGGGGTCTCATGGCCTGCTCTTCGGGAAGATTGGCTACTACCTGGTGTGGCTGGTGTGCGT  
AGCCATCTTTGTGTTTCATGATCCGGACGCTGCGGCTGAAGATCTTGGCAGACGCAGCAGCTGAGGGGGTC  
CCGGTGGTGGGGCCCGAACAGCTGCGCATGTACCTGACCATGGCGGTGGCGGGCGCGCAGCCTATGC  
TCATGTACTGGCTCACCTCCACCTGGTGCGG

**ACGCGT**ACGCGGGCCGCTCGAGCAGAAACTCATCTCAGAAGAGGATCTGGCAGCAAATGATATCCTGGATT  
ACAAGGATGACGACGATAAGGTTTAA



[View online »](#)

**Protein Sequence:** >RC227675 protein sequence  
Red=Cloning site Green=Tags(s)

MHPAGLAAAAGTPRLRKWPSKRRIPVVSQPGMADPHQLFDDTSSAQSRYGAQRAPGGLSYPAASPTPHA  
 AFLADPVSNMAMAYGSSSLAAQKELVDKNIDRFIPITKLYYFAVDTMVYGRKLGLLFFPYLHQDWEVQY  
 QQDTPVAPRFVDNAPDLIYPAMAFITYVLVAGLALGTQDRFSPDLLGLQASSALAWLTLEVLAILLSLYL  
 VTVNTDLTTIDLVAFLGYKYVGMIGGVLMLLFGKIGYYLVLGWCCVAIFVFMIRTLRLKILADAAAEGV  
 PVRGARNQLRMYLTMAVAAAQPMLMYWLTFFHLVR

TRTRPLEQKLISEEDLAANDILDYKDDDDKV

**Chromatograms:** [https://cdn.origene.com/chromatograms/mk6368\\_c10.zip](https://cdn.origene.com/chromatograms/mk6368_c10.zip)

**Restriction Sites:** SgfI-MluI

**Cloning Scheme:**

Cloning sites used for ORF Shuttling:



\* The last codon before the Stop codon of the ORF

**ACCN:** NM\_001145462

**ORF Size:** 945 bp

**OTI Disclaimer:** The molecular sequence of this clone aligns with the gene accession number as a point of reference only. However, individual transcript sequences of the same gene can differ through naturally occurring variations (e.g. polymorphisms), each with its own valid existence. This clone is substantially in agreement with the reference, but a complete review of all prevailing variants is recommended prior to use. [More info](#)

**OTI Annotation:** This clone was engineered to express the complete ORF with an expression tag. Expression varies depending on the nature of the gene.

**Components:** The ORF clone is ion-exchange column purified and shipped in a 2D barcoded Matrix tube containing 10ug of transfection-ready, dried plasmid DNA (reconstitute with 100 ul of water).

**Reconstitution Method:**

1. Centrifuge at 5,000xg for 5min.
2. Carefully open the tube and add 100ul of sterile water to dissolve the DNA.
3. Close the tube and incubate for 10 minutes at room temperature.
4. Briefly vortex the tube and then do a quick spin (less than 5000xg) to concentrate the liquid at the bottom.
5. Store the suspended plasmid at -20°C. The DNA is stable for at least one year from date of shipping when stored at -20°C.

**RefSeq:** [NM\\_001145462.1](#), [NP\\_001138934.1](#)

**RefSeq Size:** 2764 bp

**RefSeq ORF:** 852 bp

**Locus ID:** 90522

**UniProt ID:** [Q5BJH7](#)

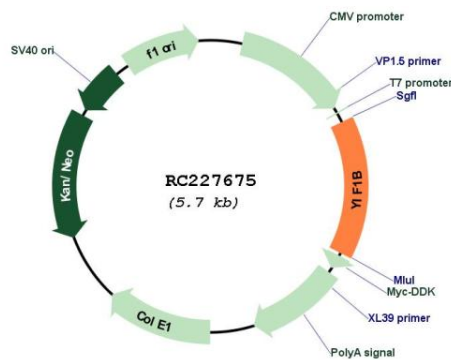
**Cytogenetics:** 19q13.2

**Protein Families:** Transmembrane

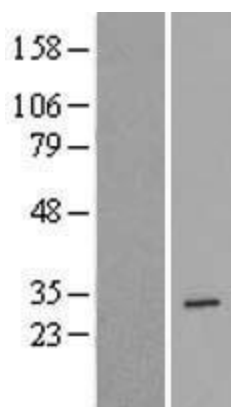
**MW:** 34.4 kDa

**Gene Summary:** Involved in the anterograde traffic pathway from the endoplasmic reticulum to the plasma membrane and the organization of the Golgi architecture (By similarity). Plays a key role in targeting to neuronal dendrites receptors such as HTR1A (By similarity).[UniProtKB/Swiss-Prot Function]

### Product images:



Circular map for RC227675



Western blot validation of overexpression lysate (Cat# [LY428905]) using anti-DDK antibody (Cat# [TA50011-100]). Left: Cell lysates from untransfected HEK293T cells; Right: Cell lysates from HEK293T cells transfected with RC227675 using transfection reagent MegaTran 2.0 (Cat# [TT210002]).