

## Product datasheet for **RC227664**

### PPHLN1 (NM\_001143787) Human Tagged ORF Clone

#### Product data:

Product Type:	Expression Plasmids
Product Name:	PPHLN1 (NM_001143787) Human Tagged ORF Clone
Tag:	Myc-DDK
Symbol:	PPHLN1
Synonyms:	CR; HSPC206; HSPC232
Mammalian Cell Selection:	Neomycin
Vector:	pCMV6-Entry (PS100001)
E. coli Selection:	Kanamycin (25 ug/mL)



[View online »](#)

**ORF Nucleotide Sequence:**

>RC227664 representing NM\_001143787  
 Red=Cloning site Blue=ORF Green=Tags(s)

TTTTGTAATACGACTCACTATAGGGCGGCCGGAATTCGTCGACTGGATCCGGTACCGAGGAGATCTGCC  
 GCC**CGATCGCC**

ATGTGGTCTGAGGACGATATGAATATGAAAGAATTCGAGAGAACGAGCACCTCCTCGAAGTCATCCCA  
 GTGATGAATCTGGTTATAGATGGACAAGAGACGATCATTCTGCAAGCAGGCAACCTGAATACAGGGACAT  
 GAGAGATGGCTTTAGAAGAAAAAGTTTCTACTCTTCCCATTATGCGAGAGAGCGGTCTCCTTATAAAAGG  
 GACAATACTTTTTTCAGAGAATCACCTGTTGGCCGAAAGGATTCTCCACACAGCAGATCTGGTTCCAGTG  
 TCAGTAGCAGAAGCTACTCTCCAGAAAGGAGCAAATCATACTCTTCCATCAGTCTCAACATAGAAAAGTC  
 CGTGCGTCTGGTGCCTCTACAAACGGCAGAATGAAGGAAATCCTGAAAGAGATAAAGAGAGGCCTGTC  
 CAGTCTTTGAAAACATCAAGAGATACTCACCCCTCAAGTGGTTCAGCAGTTTCTTCATCAAAGGTGTTAG  
 ACAAACCCAGTAGGCTAACTGAAAAGGAACTTGTCTGAGGCTGCAAGCAAGTGGGCTGCTGAAAAGCTAGA  
 GAAATCAGATGAAAGTAACTTGCCTGAAATTTCTGAGTATGAGGCGGGATCCACAGCACCATTGTTTACT  
 GACCAGCCAGAGGAACCTGAGTCAAACACAACACATGGGATAGAATTATTTGAAGATAGTCAGCTAACCA  
 CTCGCTCTAAAGCAATAGCATCAAAAACCAAAGAGATTGAACAGGTTTACCGACAAGACTGTGAAACTTT  
 CGGGATGGTGGTAAAAATGCTGATTGAAAAAGATCCTTCATTAGAAAAGTCTATACAGTTTGATTGAGG  
 CAGAAATTTACATGAAATAGAGTCTGCAGGACAGACTTGGCAGCAGGTACCCCTGTGAGGAACACTGAAA  
 TGGATCACGACGGAACCCCGAAAACGAAGGCGAAGAGACTGCGCAGTCAGCCCTCTTTGGATTCCAGCA  
 CGACGCATCAAACCATACCATAGTGGGGCTAGGACCCAACCAAGTACCAGAAATGAAGGAAACGACCCTG  
 CAGGCCCCGACGCCCCGAGGCCCGCAGCCCCCTGCAGCCCCGGAAGAAACGGGTTCTGTCGGACGACAC  
 AGCTTCGTCGGACGACAGGAGCCCCAGACATTACCTGGGGGATGCTGAAGAAGACAACCTCAGGAGGCTGA  
 GAGGATCCTGCTCCGAACACAGACACCATTCACTCCAGAAAATTTGTTCTTGTATGCTCTCTGTTGTA  
 CATTGCAACTCACGAAGGATGTAAGCCAGAAAACAAGCAG

**ACGCGT**ACGCGGCCGCTCGAGCAGAAACTCATCTCAGAAGAGGATCTGGCAGCAAATGATATCCTGGATT  
 ACAAGGATGACGACGATAAGGTTTAA

**Protein Sequence:**

>RC227664 representing NM\_001143787  
 Red=Cloning site Green=Tags(s)

MWSEGRYEYERIPRERAPPRSHPSDESGYRWTRDDHSASRQPEYRDMRDGFRRKSFYSSHYARERSPYKR  
 DNTFFRESPVGRKDSPHSRSGSSVSSRSYSPERSKSYSFHQSQHRKSVRPGASYKRQNEGNPERDKERP  
 QSLKTSRDTSPSSGSAVSSSKVLDKPSRLTEKELAEAAASKWAAEKLEKSDESNLPEISEYEAGSTAPLFT  
 DQPEEPESNTTHGIELFEDSQLTTRSKAIASKTKEIEQVYRQDCETF GMVVKMLIEKDP SLEKSIQFALR  
 QNLHEIESAGQTWQQVPPVRNTEMDHDGTPENEGEETAQSALFGFQHDASNHTIVLGNQVPEMKETTL  
 QAPQPPAPQPLQPRKRVRRRTQLRRTTGAPDITWGMLKKTQEAERILLRTQTPFTPENLFLAML SVV  
 HCNSRKDVKPENKQ

**TR**TRPLEQKLISEEDLAANDILDYKDDDDKV

**Chromatograms:**

[https://cdn.origene.com/chromatograms/mk8059\\_f10.zip](https://cdn.origene.com/chromatograms/mk8059_f10.zip)

**Restriction Sites:**

Sgfl-Mlul

**Cloning Scheme:**


**ACCN:** NM\_001143787

**ORF Size:** 1302 bp

**OTI Disclaimer:** The molecular sequence of this clone aligns with the gene accession number as a point of reference only. However, individual transcript sequences of the same gene can differ through naturally occurring variations (e.g. polymorphisms), each with its own valid existence. This clone is substantially in agreement with the reference, but a complete review of all prevailing variants is recommended prior to use. [More info](#)

**OTI Annotation:** This clone was engineered to express the complete ORF with an expression tag. Expression varies depending on the nature of the gene.

**Components:** The ORF clone is ion-exchange column purified and shipped in a 2D barcoded Matrix tube containing 10ug of transfection-ready, dried plasmid DNA (reconstitute with 100 ul of water).

**Reconstitution Method:**

1. Centrifuge at 5,000xg for 5min.
2. Carefully open the tube and add 100ul of sterile water to dissolve the DNA.
3. Close the tube and incubate for 10 minutes at room temperature.
4. Briefly vortex the tube and then do a quick spin (less than 5000xg) to concentrate the liquid at the bottom.
5. Store the suspended plasmid at -20°C. The DNA is stable for at least one year from date of shipping when stored at -20°C.

**RefSeq:** [NM\\_001143787.2](#)

**RefSeq ORF:** 1305 bp

**Locus ID:** 51535

**UniProt ID:** [Q8NEY8](#)

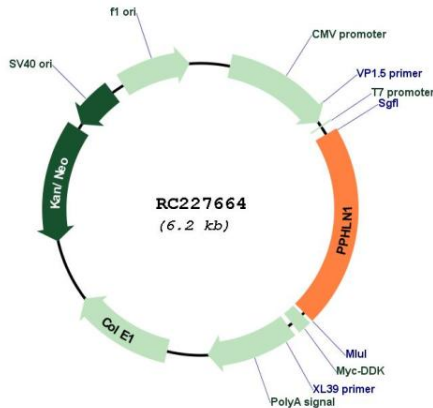
**Cytogenetics:** 12q12

**MW:** 49.5 kDa

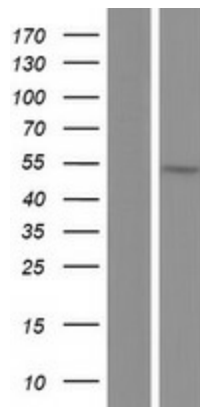
**Gene Summary:**

The protein encoded by this gene is one of the several proteins that become sequentially incorporated into the cornified cell envelope during the terminal differentiation of keratinocyte at the outer layers of epidermis. This protein interacts with periplakin, which is known as a precursor of the cornified cell envelope. The cellular localization pattern and insolubility of this protein suggest that it may play a role in epithelial differentiation and contribute to epidermal integrity and barrier formation. Multiple alternatively spliced transcript variants encoding distinct isoforms have been observed. [provided by RefSeq, Jul 2008]

**Product images:**



Circular map for RC227664



Western blot validation of overexpression lysate (Cat# [LY428347]) using anti-DDK antibody (Cat# [TA50011-100]). Left: Cell lysates from untransfected HEK293T cells; Right: Cell lysates from HEK293T cells transfected with RC227664 using transfection reagent MegaTran 2.0 (Cat# [TT210002]).