

Product datasheet for **RC227662**

BSDC1 (NM_001143889) Human Tagged ORF Clone

Product data:

Product Type:	Expression Plasmids
Product Name:	BSDC1 (NM_001143889) Human Tagged ORF Clone
Tag:	Myc-DDK
Symbol:	BSDC1
Mammalian Cell Selection:	Neomycin
Vector:	pCMV6-Entry (PS100001)
E. coli Selection:	Kanamycin (25 ug/mL)
ORF Nucleotide Sequence:	>RC227662 representing NM_001143889 Red=Cloning site Blue=ORF Green=Tags(s)

TTTTGTAATACGACTCACTATAGGGCGGCCGGAATTCGTCGACTGGATCCGGTACCGAGGAGATCTGCC
GCC**CGATCGCC**

ATGGCGGAAGGGGAGGACGTGGGATGGTGGCGGAGCTGGCTGCAGCAGAGCTACCAAGCAGTCAAAGAGA
AGTCTCTGAAGCCTTGGAGTTTATGAAGCGGGACCTGACGGAGTTTACCCAGGTGGTGCAGCATGACAC
GGCCTGTACCATCGCAGCCACGGCCAGCGTGGTCAAGGAGAAGCTGGCTGCTCGCCTCTATAGCCTGCAG
TCGGACCCAGCAACCTACTGTAATGAACCAGATGGGCCCGGAATTGTTTGACGCCTGGCTTCCAGT
TCTGCTTGGAGGAGAAGAAGGGGAGATCTCAGAGCTCCTGTAGGCAGCCCTCCATCCGGGCCCTTA
CACCAAGATGGTTCCAGCAGCTGTTCCCATTCAGAATTCTGGCATCGGTATTTCTATAAAGTCCATCAG
TTAGAGCAGGAGCAGGCCCGGAGGGACGCCCTGAAGCAGCGGGCGAAGCAGAGCATCTCTGAAGAGCCCG
GCTGGGAGGAGGAGGAAGAGGAGCTCATGGGCATTTACCCATATCTCCAAAAGAGGCAAAGGTTCTGT
GGCCAAAATTTCTACATTCCTGAAGGAGAACCTGGCCCCAGAGCCCTGTGAAGAGAATCTGGTGACT
TCAGTTGAGCCCCAGCAGAGGTGACTCCATCAGAGAGCAGTGAGAGCATCTCCCTCGTGACACAGATCG
CCAACCCGGCCACTGCACCTGAGGCACGAGTGCTACCCAAGGACCTGTCCAAAAGCTGCTAGAGGCATC
CTTGGAGAACAGGGCCTGGCTGTGGATGTGGTGAGACTGGACCCTCACCCCTATTCACTCCAAGCCC
CTAACGCCTGCTGGCCACACCGGCGGCCAGAGCCAGGCCTCCAGCCAGAGTAGAGACTCTGAGGGAGG
AGGCGCCACAGACTTACGGGTGTTGAGCTGAACTCGGATAGTGGGAAGTCTACACCCTCAACAATGG
AAAGAAAGGCTCAAGCACGGACATCAGTGAGGACTGGGAGAAAGACTTTGACTTGGACATGACTGAAGAG
GAGGTGCAGATGGCACTTCCAAGTGGATGCCTCCGGGGAGCTGGAAGATGTAGAGTGGGAGGACTGGG
AG

ACGCGTACGCGGCCGCTCGAGCAGAACTCATCTCAGAAGAGGATCTGGCAGCAAATGATATCCTGGATT
ACAAGGATGACGACGATAAGGTTTAA



[View online »](#)

Protein Sequence: >RC227662 representing NM_001143889
Red=Cloning site Green=Tags(s)

MAEGEDVGVWRSWLQSYQAVKEKSSEALEFMKRDLTEFTQVVQHDTACTIAATASVVKEKLAARLYSLQ
SDPATYCNEDGPPPELFDAWLSQFCLEKKKEISELLVGSPSIRALYTKMVAAPVSHSEFWHRYFYKVHQ
LEQEQAARRDALQRAEQSISEEPGWEEEEELMGI SPI SPKEAKVPVAKISTFPEGEPGPQSPCEENLVT
SVEPPAEVTPSESESI SLVTQIANPATAPPEARVLPKDL SQKLEASLEEQLAVDVGETGPPSPPIHSKP
LTPAGHTGGPEPRPPARVETLREEAPTDLRVFELNSDSGKSTPSNNGKGSSTDI SEDWEKDFDLDMTEE
EVQMALSKVDASGELEDVEWEDWE

TRTRPLEQKLISEEDLAANDILDYKDDDDKV

Chromatograms: https://cdn.origene.com/chromatograms/mk8055_e10.zip

Restriction Sites: SgfI-MluI

Cloning Scheme:

Cloning sites used for ORF Shuttling:



ACCN: NM_001143889

ORF Size: 1122 bp

OTI Disclaimer: The molecular sequence of this clone aligns with the gene accession number as a point of reference only. However, individual transcript sequences of the same gene can differ through naturally occurring variations (e.g. polymorphisms), each with its own valid existence. This clone is substantially in agreement with the reference, but a complete review of all prevailing variants is recommended prior to use. [More info](#)

OTI Annotation: This clone was engineered to express the complete ORF with an expression tag. Expression varies depending on the nature of the gene.

Components: The ORF clone is ion-exchange column purified and shipped in a 2D barcoded Matrix tube containing 10ug of transfection-ready, dried plasmid DNA (reconstitute with 100 ul of water).

- Reconstitution Method:**
1. Centrifuge at 5,000xg for 5min.
 2. Carefully open the tube and add 100ul of sterile water to dissolve the DNA.
 3. Close the tube and incubate for 10 minutes at room temperature.
 4. Briefly vortex the tube and then do a quick spin (less than 5000xg) to concentrate the liquid at the bottom.
 5. Store the suspended plasmid at -20°C. The DNA is stable for at least one year from date of shipping when stored at -20°C.

RefSeq: [NM_001143889.3](#)

RefSeq ORF: 1125 bp

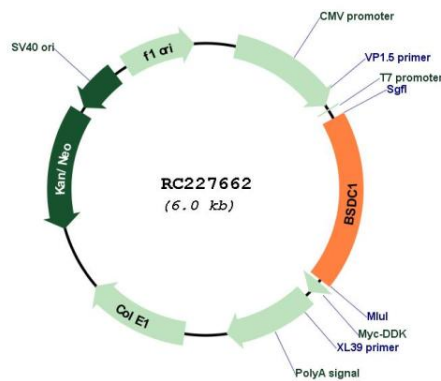
Locus ID: 55108

UniProt ID: [Q9NW68](#)

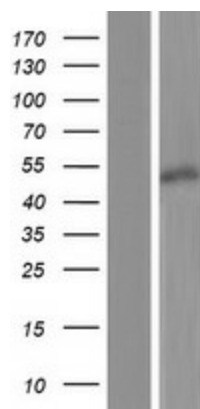
Cytogenetics: 1p35.1

MW: 41.2 kDa

Product images:



Circular map for RC227662



Western blot validation of overexpression lysate (Cat# [LY428396]) using anti-DDK antibody (Cat# [TA50011-100]). Left: Cell lysates from untransfected HEK293T cells; Right: Cell lysates from HEK293T cells transfected with RC227662 using transfection reagent MegaTran 2.0 (Cat# [TT210002]).