

Product datasheet for **RC227653**

BSDC1 (NM_001143888) Human Tagged ORF Clone

Product data:

Product Type:	Expression Plasmids
Product Name:	BSDC1 (NM_001143888) Human Tagged ORF Clone
Tag:	Myc-DDK
Symbol:	BSDC1
Mammalian Cell Selection:	Neomycin
Vector:	pCMV6-Entry (PS100001)
E. coli Selection:	Kanamycin (25 ug/mL)



[View online »](#)

ORF Nucleotide Sequence:

>RC227653 representing NM_001143888
 Red=Cloning site Blue=ORF Green=Tags(s)

TTTTGTAATACGACTCACTATAGGGCGGCCGGGAATTCGTCGACTGGATCCGGTACCGAGGAGATCTGCC
 GCC**CGCATCGCC**

ATGGCGGAAGGGGAGGACGTGGGATGGTGGCGGAGCTGGTGCAGCAGAGCTACCAAGCAGTCAAAGAGA
 AGTCTCTGAAGCCTTGGAGTTTATGAAGCGGGACCTGACGGAGTTTACCCAGGTGGTGCAGCATGACAC
 GCCTGTACCATCGCAGCCACGGCCAGCGTGGTCAAGGAGAAGCTGGCTATTGCAGCCTGTTCCCGGGC
 GCTTGCTTCTCTGCCGTTCTCTATACAGACGGAAGGCTCCTCAGGAGCAACAGAGAAGATGAAGAAA
 GGTTATCTGACTTCTAGGGGTGATCTCAGACACCTTTGCCCTTCGCCAGACAAAACCTCGACTGCGA
 TGTCATCACCTGATGGGCACACCGTCTGGCACAGCTGAGCCCTATGATGGCACCAAGGCTCGCCTCTAT
 AGCCTGCAGTCGGACCCAGAACCTACTGTAATGAACCAGATGGGCCCCCGGAATTGTTTACGCCTGGC
 TTTCCAGTTCGCTTGGAGGAGAAGAAGGGGAGATCTCAGAGCTCCTTGTAGGCAGCCCTCCATCCG
 GGCCCTACACCAAGATGGTTCAGCAGCTGTTCCATTTCAGAATTCTGGCATCGGTATTTCTATAAA
 GTCATCATGTTAGAGCAGGAGCAGGCCCGAGGGACGCCCTGAAGCAGCGGGCGGAACAGAGCATCTCTG
 AAGAGCCCGCTGGGAGGAGGAGGAAGAGGAGCTCATGGGCATTTACCCATATCTCCAAAAGAGGCAAA
 GGTTCCTGTGGCCAAAATTTCTACATTCCTGAAGGAGAACCTGGCCCCAGAGCCCTGTGAAGAGAAT
 CTGGTGACTTCAGTTGAGCCCCAGCAGAGGTGACTCCATCAGAGAGCAGTGAGAGCATCTCCCTCGTGA
 CACAGATCGCCAACCCGGCCACTGCACCTGAGGCACGAGTGCTACCAAGGACCTGTCCAAAAGCTGCT
 AGAGGCATCCTTGGAGGAACAGGGCCTGGCTGTGGATGTGGGTGAGACTGGACCCACCCCTATTAC
 TCCAAGCCCTAACGCCCTGTGGCCACACCGCGGCCAGAGCCAGGCCCTCCAGCCAGAGTAGAGACTC
 TGAGGGAGGAGGGCCACAGACTTACGGGTGTTTGGAGCTGAACCTCGGATAGTGGGAAGTCTACACCTC
 CAACAATGGAAAAGAAAGGCTCAAGCACGGACATCAGTGAGGACTGGGAGAAAGACTTTGACTTGGACATG
 ACTGAAGAGGAGGTGCAGATGGCACTTTCAAAGTGGATGCCTCCGGGGAGCTGGAAGATGTAGAGTGG
 AGGACTGGGAG

ACGCGTACGCGGCCGCTCGAGCAGAAACTCATCTCAGAAGAGGATCTGGCAGCAAATGATATCCTGGATT
 ACAAGGATGACGACGATAAGGTTTAA

Protein Sequence:

>RC227653 representing NM_001143888
 Red=Cloning site Green=Tags(s)

MAEGEDVGWRSWLQQSYQAVKEKSSEALEFMKRDLTEFTQVVQHDTACTIAATASVVKEKLAIAACSRG
 ACFLCPFSIQTEGSSGATEKMKKGLSDFLGVISDTFAPSPDKTIDCDVITLMGTPSGTAEPYDGTKARLY
 SLQSDPATYCNEPDGPELFDWLQFCLLEKKGEISELLVGSPSIRALYTKMVPAAVSHSEFWHRYFYK
 VHQLREQARRDALKQRAEQSISEEPGWEEEEELMGIISPKEAKVPVAKISTFPEGEPGPQSPCEEN
 LVTSVEPPAEVTPSESSESISLVTQIANPATAPEARVLPKDLSQLLEASLEEQLAVDVGETGPPPIH
 SKPLTPAGHTGGPEPRPPARVETLREEAPTDLRVFELNSDSGKSTPSNNGKKGSSTDISDWEKDFDLDL
 TEEEVQMALSKVDASGELEDVWEDWE

TRTRPLEQKLISEEDLAANDILDYKDDDDKV

Chromatograms:

https://cdn.origene.com/chromatograms/mk8060_f08.zip

Restriction Sites:

SgfI-MluI

Cloning Scheme:


ACCN: NM_001143888

ORF Size: 1341 bp

OTI Disclaimer: The molecular sequence of this clone aligns with the gene accession number as a point of reference only. However, individual transcript sequences of the same gene can differ through naturally occurring variations (e.g. polymorphisms), each with its own valid existence. This clone is substantially in agreement with the reference, but a complete review of all prevailing variants is recommended prior to use. [More info](#)

OTI Annotation: This clone was engineered to express the complete ORF with an expression tag. Expression varies depending on the nature of the gene.

Components: The ORF clone is ion-exchange column purified and shipped in a 2D barcoded Matrix tube containing 10ug of transfection-ready, dried plasmid DNA (reconstitute with 100 ul of water).

Reconstitution Method:

1. Centrifuge at 5,000xg for 5min.
2. Carefully open the tube and add 100ul of sterile water to dissolve the DNA.
3. Close the tube and incubate for 10 minutes at room temperature.
4. Briefly vortex the tube and then do a quick spin (less than 5000xg) to concentrate the liquid at the bottom.
5. Store the suspended plasmid at -20°C. The DNA is stable for at least one year from date of shipping when stored at -20°C.

RefSeq: [NM_001143888.3](#)

RefSeq ORF: 1344 bp

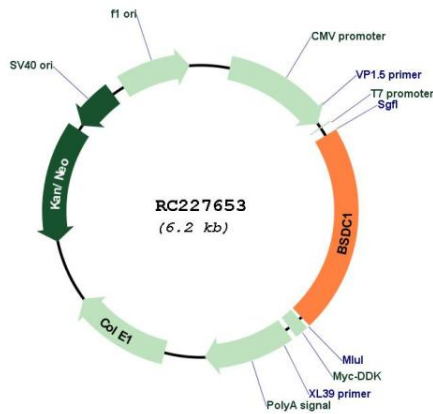
Locus ID: 55108

UniProt ID: [Q9NW68](#)

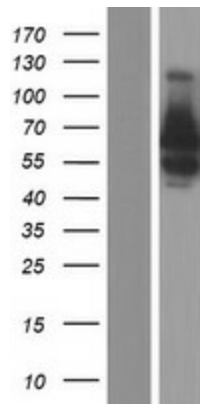
Cytogenetics: 1p35.1

MW: 48.8 kDa

Product images:



Circular map for RC227653



Western blot validation of overexpression lysate (Cat# [LY428395]) using anti-DDK antibody (Cat# [TA50011-100]). Left: Cell lysates from untransfected HEK293T cells; Right: Cell lysates from HEK293T cells transfected with RC227653 using transfection reagent MegaTran 2.0 (Cat# [TT210002]).