

Product datasheet for **RC227644**

SnoN (SKIL) (NM_001145097) Human Tagged ORF Clone

Product data:

Product Type:	Expression Plasmids
Product Name:	SnoN (SKIL) (NM_001145097) Human Tagged ORF Clone
Tag:	Myc-DDK
Symbol:	SnoN
Synonyms:	SNO; SnoA; SnoI; SnoN
Mammalian Cell Selection:	Neomycin
Vector:	pCMV6-Entry (PS100001)
E. coli Selection:	Kanamycin (25 ug/mL)



[View online »](#)

ORF Nucleotide
Sequence:

>RC227644 representing NM_001145097
Red=Cloning site Blue=ORF Green=Tags(s)

TTTTGTAATACGACTCACTATAGGGCGGCCGGAATTCGTCGACTGGATCCGGTACCGAGGAGATCTGCC
GCCCGGATCGCC

ATGGAAAACCTCCAGACAAATTTCTCCTTGTTGCTCAGGGCTCAACTAAAAACTGAATGGGATGGGAGATG
ATGGCAGCCCCCAGCGAAAAAATGATAACGGACATTCATGCAAATGGAAAAACGATAAAACAAGGTGCC
AACAGTTAAGAAGGAACACTTGGATGACTATGGAGAAGCACCAAGTGGAAACTGATGGAGAGCATGTTAAG
CGAACCTGTAATCTGTTCTGAACTTTGCATTTAAATCCCAGTTTGAACACACATTGGCACAATTCC
ATTTAAGTAGTCAGAGCTCGCTGGGTGGACCAGCAGCATTTTCTGCTCGGCATTCCTCAAGAAAGCATGTC
GCCTACTGTAATTTCTGCCTCTCCATCACCTCAGGTTCTTCTGGCCATTGCTCATCCCTTCAGATAGC
TCCACAGAACTCACTCAGACTGTGTTGGAAGGGGAATCTATTTCTGTTTTCAAGTTGGAGGAGAAAAGA
GACTCTGTTTGCCTCAAGTCTTAAATTTCTGTTCTCCGAGAATTTACTCTCCAGCAATAAATACAGTGTG
TGATGAACTGTACATATATTGTTCAAGGTGTACTTCAGACCAGCTTCATATCTTAAAGGTACTGGGCATA
CTTCCATTCAATGCCCATCCTGTGGGTGATTACATTAAGTATGCACAAAGATTATGTAATGCTTTAT
TGCGGCCACGAACTTTTCTCAAATGGTAGCGTACTTCTGCTAAAAGCTCATTGGCCAGTTAAAGGA
AACTGGCAGTGCCTTTGAAGTGGAGCATGAATGCCTAGGCAAATGTCAGGGTTTTATTTGCACCCAGTTT
TATGTTACGCCTGATGCTCCGTGATTCATGTCTGGAGTGTGTGGAATGTTTGACCCAGACGTTTG
TGATGCATTCTCACAGATCACCTGACAAAAAAGACTTGCCACTGGGGCTTTGAATCAGCTAAATGGCATTG
CTATCTTCATGTGAACAAAAAATACTTAGGAACACCTGAAGAAAAGAACTGAAGATAATTTTGAAGAA
ATGAAGGAGAAGTTTAGCATGAGAAGTGGAAAGAGAAAATCAATCCAAGACAGATGCACCATCAGGAATGG
AATTACAGTCATGGTATCCTGTTATAAAGCAGGAAGGTGACCATGTTTCTCAGACACATTCATTTTACA
CCCCAGCTACTACTTATACATGTGTGATAAAGTGGTTGCCCAAATGTGTCACTTACTTCTGCTGTATCC
CAGTCTAAAGAGCTCACAAAGACAGAGGCAAATGCATCAATCTCAAATAATTCTACAAGTAAAAGGAAAT
CTGAGTCTGCCACTTGCAACTTAGTCAGAGACATAAAACAAAGTGGGAATTGGCCTTGTTGCTGCCCTTC
ATCTCCGCTTCTTGTAAGATGTCATTTGTGAGGATGATAAGGGAAAAATCATGGAAGAAGTAATGAGA
ACTTATTTAAACAACAGGAAAAACTAACTTGATTTTGCAAAGAAAGCAACAACCTTCAGATGGAAGTAA
AAATGTTGAGTAGTTCAAATCTATGAAGGAACACTCAAGAACAGCAGAAATTTACAGAAAGAGCTTGA
ATCTTTGCAGAAATGAACATGCTCAAAGAATGGAAGAATTTATGTTGAACAGAAAGACTTAGAGAAAAAA
TTGGAGCAGATAATGAAGCAAAAATGTACCTGTGACTCAAATTTAGAAAAAGACAAGAGGCTGAATATG
CAGGACAGTTGGCAGAACTGAGGCAGAGATTGGACCATGCTGAGGCCGATAGGCAAGAACTCCAAGATGA
ACTCAGACAGGAACGGGAAGCAAGACAGAAGTTAGAGATGATGATAAAGAGCTAAAGCTGCAAATTCCTG
AAATCATCAAAGACTGCTAAAGAA

ACGCGTACGCGGCCGCTCGAGCAGAAACTCATCTCAGAAGAGGATCTGGCAGCAAATGATATCCTGGATT
ACAAGGATGACGACGATAAGGTTTAA

Protein Sequence: >RC227644 representing NM_001145097
 Red=Cloning site Green=Tags(s)

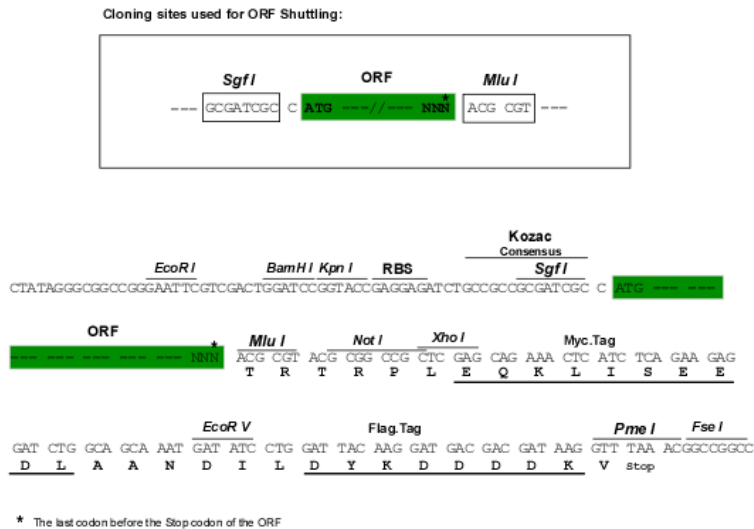
MENLQTNFSLVQGSTKKLNGMGDDGSPPAKKMITDIHANGKTINKVPTVKKEHLDDYGEAPVETDGEHVK
 RTCTSVPETLHLNPSLKHHTLAQFHLSSQSSLGGPAAF SARHSQESMSPTVFLPLPSPQVLPGPLLIPSDS
 STELTQTVLEGESISCFQVGGKRLCLPQVNLNSVLRFTLQQINTVCEDELYIYCSRCTSDQLHILKVLGI
 LFPNAPSCGLITLTDARL CNALLRPRTFPQNGSVLPAKSSLAQLKETGSAFEVEHECLGKCQGLFAPQF
 YVQPDAPCIQCLECCGMFAPQTFVMHSHRSPDKRTCHWGFESAKWHCYLHVNQKYLGTPEEKKKLIILEE
 MKEKFSMRSGKRNQSKTDAPSGMELQSWYPVIKQEGDHVSQTHSFLHPSYYLYMCDKVVAPNVSLTSAVS
 QSKELTKTEANASISNNSTSKRKSESATCNLVRDINKVIGLVAASSPLLVKDVI CEDDKGKIMEEVMR
 TYLKQEQEKLNLILQKKQQLQMEVKMLSSSKSMKEL TEEQNLQKELESLQNEHAQRMEEFYVEQKDLEKK
 LEQIMKQKCTCDSNLEKDKEAEYAGQLAELRQRLDHAADRQELQDELQREARQKLEMMIKELKLQIL
 KSSKTAKE

TRTRPLEQKLISEEDLAANDILDYKDDDDKV

Chromatograms: https://cdn.origene.com/chromatograms/mk8070_h05.zip

Restriction Sites: SgfI-MluI

Cloning Scheme:



ACCN: NM_001145097

ORF Size: 1914 bp

OTI Disclaimer: The molecular sequence of this clone aligns with the gene accession number as a point of reference only. However, individual transcript sequences of the same gene can differ through naturally occurring variations (e.g. polymorphisms), each with its own valid existence. This clone is substantially in agreement with the reference, but a complete review of all prevailing variants is recommended prior to use. [More info](#)

OTI Annotation: This clone was engineered to express the complete ORF with an expression tag. Expression varies depending on the nature of the gene.

Components: The ORF clone is ion-exchange column purified and shipped in a 2D barcoded Matrix tube containing 10ug of transfection-ready, dried plasmid DNA (reconstitute with 100 ul of water).

Reconstitution Method:

1. Centrifuge at 5,000xg for 5min.
2. Carefully open the tube and add 100ul of sterile water to dissolve the DNA.
3. Close the tube and incubate for 10 minutes at room temperature.
4. Briefly vortex the tube and then do a quick spin (less than 5000xg) to concentrate the liquid at the bottom.
5. Store the suspended plasmid at -20°C. The DNA is stable for at least one year from date of shipping when stored at -20°C.

RefSeq: [NM_001145097.2](#), [NP_001138569.1](#)

RefSeq ORF: 1917 bp

Locus ID: 6498

UniProt ID: [P12757](#)

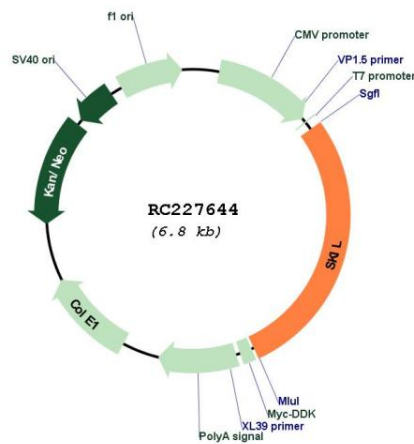
Cytogenetics: 3q26.2

Protein Families: Druggable Genome, Transcription Factors

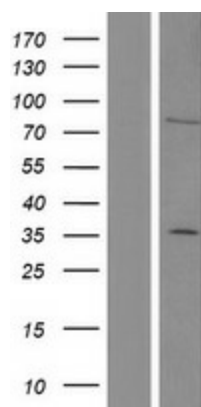
MW: 71.6 kDa

Gene Summary: The protein encoded by this gene is a component of the SMAD pathway, which regulates cell growth and differentiation through transforming growth factor-beta (TGFB). In the absence of ligand, the encoded protein binds to the promoter region of TGFB-responsive genes and recruits a nuclear repressor complex. TGFB signaling causes SMAD3 to enter the nucleus and degrade this protein, allowing these genes to be activated. Four transcript variants encoding three different isoforms have been found for this gene. [provided by RefSeq, Oct 2011]

Product images:



Circular map for RC227644



Western blot validation of overexpression lysate (Cat# [LY428686]) using anti-DDK antibody (Cat# [TA50011-100]). Left: Cell lysates from untransfected HEK293T cells; Right: Cell lysates from HEK293T cells transfected with RC227644 using transfection reagent MegaTran 2.0 (Cat# [TT210002]).