

## Product datasheet for **RC227637**

### ZNF447 (ZSCAN18) (NM\_001145543) Human Tagged ORF Clone

#### Product data:

Product Type:	Expression Plasmids
Product Name:	ZNF447 (ZSCAN18) (NM_001145543) Human Tagged ORF Clone
Tag:	Myc-DDK
Symbol:	ZNF447
Synonyms:	ZNF447
Mammalian Cell Selection:	Neomycin
Vector:	pCMV6-Entry (PS100001)
E. coli Selection:	Kanamycin (25 ug/mL)



[View online »](#)

**ORF Nucleotide Sequence:**

>RC227637 ORF sequence  
 Red=Cloning site Blue=ORF Green=Tags(s)

TTTTGTAATACGACTCACTATAGGGCGGCCGGGAATTCGTCGACTGGATCCGGTACCGAGGAGATCTGCC  
 GCC**CGGATCGCC**

ATGTTGCCTTTGGAGAAGGCGTTTGCCTCCCCAGGAGCTCCCCAGCCCCGCCGGATCTGCCACGCCGG  
 GGTGAGCAGCCGGAGTCCAGCAGGAAGAACCAGACCATCCCTGAGAGGACCCCTGCTGACCTGGAGTT  
 CTCCCGCCTGCGTTTCCGGGAATTTGTCTACCAGGAGGCTGCCGGGCCACCAGACCCTGGCCCCGGCTG  
 CATGAGCTGTGCCCCAGTGGCTGATGCCTGAGGCGCGCTCCAAGGAGCAGATGCTGGAGCTGCTGGTGC  
 TGGAGCAGTTCTGGGCATCCTGCCTGATAAGGTCGGCCCTGGTGGTGGCACAGTACCCTGAGAGCTG  
 CAAGAAGGCAGCCTCCCTGGTGGAGGCCCTCGCTGATGTCCTGGAAGAGCCAGGGATGCTGCTGGCTCC  
 CCTGCGGGCTCATCCTCAATTCTTAGCGATGGAGTGTACGAGAGGCACATGGACCCTCTGCTGCTACCAG  
 GCGAGCTCGGAGCCCCAGCCAGGCCCTGGAGCTGGGGAGATCCCGGCACCTTCTGAGACACCCTGGCT  
 TTCTCCGACCCCTGTTTCTGGAACAGAGGAGGTCAGAGAAGCAAAGACCGAAGAGGACGGCCCTGCC  
 AACACCGAGCAGAAGCTGAAGTCTTTCCAGAGGACCCTCAGCACCTGGGGGAGTGGGGCCACCTGGACC  
 CTGCCGAGGAGAACCTGAAGAGTACCAGGAGTCTCCTGTGGGGGTATCAGCTTTCCAGCCTGACGC  
 TGCTCCAGGCTGGACACTGAGGAACTCCGGTTGGTGGAAAGAGATCCACAAGGAAGCAGCCTCCAGAA  
 GGCGGGAGGCGCAGGAGAGCGCTGGGTGCGCCTGCGAGGAGGCCGCCCCCGGGGGGTGCTGCCTGAGC  
 TGCTACGGAGGCGCCCTGGGACGCCCTTGCCGATCCCCGTGCGGCACCACTGAGGAGGAGGAAGA  
 GCAGCCTGGGAAGGCCCGGACCCGACAGACCCAGGACCGGGAGTCCGACTCTGCCACCGGATCGCAG  
 AGCAGTCCGTCATCCAGCAGCTGCCCGGACAGGGGCACGGCGAAACTGGGAACCAAGAGGCCGACC  
 CCGAGGATGGGGACGAGCAGAGCCTCGAGGGCTCTCTAGCTCCGGCAGCAGCGCAGGCTGGAGGCCG  
 GCAGGGCCCTGGGGCTGACGAGCCGGGCTTGTCCCGGGGAAGCCCTATGCTGCGGCGAGTGGCGGGAG  
 GCCTTCGCGTGGCTCTCGCACCTGATGGAGCACCACAGCAGCCTGGCGCCGGAAGCGCTACGCTGTC  
 AGGGTCTGGAAGACCTTCCACTTCAGCCTGGCCCTAGCCGAGCACCAGAAGACCCACGAGAAGGAGAA  
 AAGCTACGCGCTGGGGGGCGCCGGGGCCCCAACCGTCCACCCGGAAGCCAGGCGGGGGCTAGGGCG  
 GGCGTCCCCAGAGAGCGTGGAGGGCAGGCTCCCCCGCACCCAGAGGCGCAGAGG

**ACGCGT**ACGCGGCCGCTCGAGCAGAACTCATCTCAGAAGAGGATCTGGCAGCAAATGATATCTGGATT  
 ACAAGGATGACGACGATAAGGTTTAA

**Protein Sequence:**

>RC227637 protein sequence  
 Red=Cloning site Green=Tags(s)

MLPLEKAFASPRSSPAPPDLPTPGSAAGVQQEETIPERTPADLEF SRLRFREFVYQEAAGPHQTLARL  
 HELCRQWLMPARSKEQMLELLVLEQFLGILPDKVRPWVVAQYPESCKKAASLVEGLADVLEEPGMLLGS  
 PAGSSSILSDGVYERHMDPLLLPGELASPSQALGAGEIPAPSETPWLSPDPLFLEQRRVREAKTEEDGPA  
 NTEQKLSFPEDPQHLGEWGHLDPAEENLKSyrKLLLWGYQLSQPDAASRLDTEELRLVERDPQGSLSPE  
 GGRRQESAGCACEEAAPAGVLPPELPTAPPDALADPPSGTTEEEEEEQPKAPDPQDPQDAESDSATGSQ  
 RQSVIQQPAPDRGTAKLGTKRPHPEDGDEQSLEGVSSSGDSAGLEAGQGPGADEPGLSRGKPYACGECGE  
 AFAWLSHLMEHSSHGGRKRYACQGCWKFHFSLALAEHQKTHEKEKSYALGGARGPQPSTREAQAGARA  
 GPPPEVEGEAPPAPPEAQR

**TRTRPLEQKLI**SEEDLAANDILDYKDDDDKV

**Chromatograms:**

[https://cdn.origene.com/chromatograms/mk6176\\_c06.zip](https://cdn.origene.com/chromatograms/mk6176_c06.zip)

**Restriction Sites:**

SgfI-MluI

**Cloning Scheme:**


**ACCN:** NM\_001145543

**ORF Size:** 1530 bp

**OTI Disclaimer:** The molecular sequence of this clone aligns with the gene accession number as a point of reference only. However, individual transcript sequences of the same gene can differ through naturally occurring variations (e.g. polymorphisms), each with its own valid existence. This clone is substantially in agreement with the reference, but a complete review of all prevailing variants is recommended prior to use. [More info](#)

**OTI Annotation:** This clone was engineered to express the complete ORF with an expression tag. Expression varies depending on the nature of the gene.

**Components:** The ORF clone is ion-exchange column purified and shipped in a 2D barcoded Matrix tube containing 10ug of transfection-ready, dried plasmid DNA (reconstitute with 100 ul of water).

**Reconstitution Method:**

1. Centrifuge at 5,000xg for 5min.
2. Carefully open the tube and add 100ul of sterile water to dissolve the DNA.
3. Close the tube and incubate for 10 minutes at room temperature.
4. Briefly vortex the tube and then do a quick spin (less than 5000xg) to concentrate the liquid at the bottom.
5. Store the suspended plasmid at -20°C. The DNA is stable for at least one year from date of shipping when stored at -20°C.

**RefSeq:** [NM\\_001145543.1](#), [NP\\_001139015.1](#)

**RefSeq Size:** 2716 bp

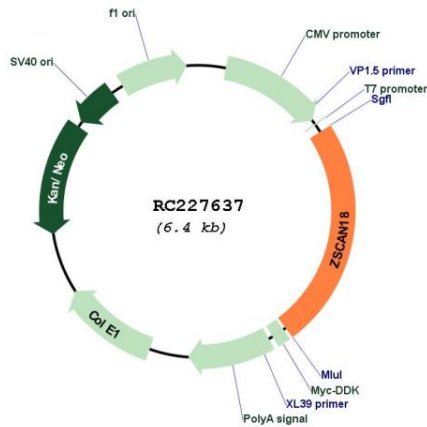
**RefSeq ORF:** 1533 bp

**Locus ID:** 65982

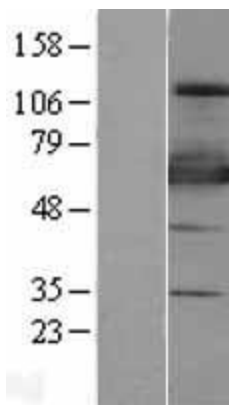
**UniProt ID:** [Q8TBC5](#)

**Cytogenetics:** 19q13.43

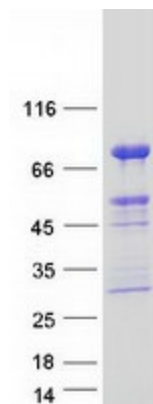
**Protein Families:** Transcription Factors  
**MW:** 54.9 kDa  
**Gene Summary:** May be involved in transcriptional regulation.[UniProtKB/Swiss-Prot Function]

**Product images:**


Circular map for RC227637



Western blot validation of overexpression lysate (Cat# [LY428934]) using anti-DDK antibody (Cat# [TA50011-100]). Left: Cell lysates from untransfected HEK293T cells; Right: Cell lysates from HEK293T cells transfected with RC227637 using transfection reagent MegaTran 2.0 (Cat# [TT210002]).



Coomassie blue staining of purified ZSCAN18 protein (Cat# [TP327637]). The protein was produced from HEK293T cells transfected with ZSCAN18 cDNA clone (Cat# RC227637) using MegaTran 2.0 (Cat# [TT210002]).