

Product datasheet for **RC227626**

ST6GAL2 (NM_001142352) Human Tagged ORF Clone

Product data:

Product Type:	Expression Plasmids
Product Name:	ST6GAL2 (NM_001142352) Human Tagged ORF Clone
Tag:	Myc-DDK
Symbol:	ST6GAL2
Synonyms:	SIAT2; ST6GalII
Mammalian Cell Selection:	Neomycin
Vector:	pCMV6-Entry (PS100001)
E. coli Selection:	Kanamycin (25 ug/mL)



[View online »](#)

ORF Nucleotide Sequence:

>RC227626 representing NM_001142352
 Red=Cloning site Blue=ORF Green=Tags(s)

TTTTGTAATACGACTCACTATAGGGCGGCCGGAATTCGTCGACTGGATCCGGTACCGAGGAGATCTGCC
 GCC**GCGATCGCC**

ATGAAACCACTTGAAGCAATGGAGACAACGAATGCTTTTCGGAATATTCGCTTGGGGCTCCTCTTTT
 TGCTGATTTTCATCTACTTCACCGACAGCAACCCGCTGAGCCTGTACCCAGCTCCTCTCCTTCCGGA
 GACCAGGAGGCTCCTGCCGGTGCAGGGGAAGCAGCGGGCCATCATGGGCGCCGCACATGAGCCCTCCCCG
 CCTGGGGGCTGGACGCACGCCAGGCGCTGCCCGCGCCACCCAGCGGTTCTTTTCATGCGGGGCTG
 GAGACCTGCAGAAATGGGCCAGTCCCAAGATGGGTTTGAACATAAAGAGTTTTTTTCATCCAGGTGGG
 GAGAAAATCTCAAAGTCTTTTACCCGGAGGATGACGACTACTTTTTGCTGCTGGTACGCCAGGGTGG
 CACAGCCACTCAGGGGACATTGGGATTCCTTCCCCGGGGAGCCAGGCCACGGGAGGGGGCTTTTC
 CGGCTGCACAGGTCCAGAGGAGGCGGGTGAAGAAGAGGCCACGGAGGCAGAGAAGGACCCAGTGTGGA
 GGAGGGCAGACGGCGACAGGCTGTACTCTCCATGTCCAGGGCCTTCTGTACCGGCTCTGGAAGGGG
 AACGTCTCTTCCAAAATGCTGAACCCGCGCTGCAGAAGGCGATGAAGGATTACCTGACCCCAACAAGC
 ACGGGGTGCGCTTCCGCGGAAGCGGGAGGCGGGCTGAGCAGGGCACAGCTGCTGTGCCAGCTGCGGAG
 CCGCGCGCGCTGCGGACGCTGGACGGCACCGAGGCGCCCTTTCTGCGCTGGGCTGGCGGCGCCTGGT
 CCCGCCGTGCCCTGAGCCAGCTGCACCCCGCGGCTGCGCAGCTGCGCTGTGTCATGTCTGCAGGCG
 CAATCCTCAACTCTTCTTGGGCGAGGAAATAGATTCTCATGATGCGGTTTTGAGATTTAACTCTGCTCC
 TACAGTGGTTATGAGAAAGATGTTGGGAATAAAACCACCATACGCATCATTAAATTCGCAGATTCTGACC
 AACCCAGCCATCACTTCACTGACAGTTCAGTATAAAGACGTCATTTGGTGGCCTGGGACCCCTGCC
 CATATTCGCAAAATCTTAACTGTGGTACAAAAACCGGATTACAACCTGTTCACTCCATATATTCAGCA
 TGGTCAGAGAAAACCAAAATCAGCCATTTTACATTCCTTCACTAAATTTATATGGCAGCTCTGGGATATT
 ATCCAGGAGAACTAAAGAGAAGATTCACCAAAACCCACCATCTTCTGTTTTATTGGCTCATTGTAA
 AAATTGGCCATATCAGAGCTTGCAGTGAGCGGAGATCACGCGACTGCACTCCAGCCTGGACGACAGAG

ACGCGTACGCGGCCGCTCGAGCAGAACTCATCTCAGAAGAGGATCTGGCAGCAAATGATATCCTGGATT
 ACAAGGATGACGACGATAAGGTTTAA

Protein Sequence:

>RC227626 representing NM_001142352
 Red=Cloning site Green=Tags(s)

MKPHLKQWRQMLFGIFAWGLLFLIFIIYFTDSNPAEPVPSLSFLETRRLLPVQKQRAIMGAAHEPSP
 PGGLDARQALPRAHPAGSFHAGPGDLQKWAQSQDGFHEKFEFFSSQVGRKSQSAFYPEDDDYFFAAGQPGW
 HSHTQGTLGFPSPGEPGREGAFPAQVQRRRVKKRHRQRSHVLEEGDDGDRLYSSMSRAFLYRLWKG
 NVSSKMLNPRLQKAMKDYLTANKHGVRFRGKREAGLSRAQLLCQLRSRARVRTLDGTEAPFSALGWRRLV
 PAVPLSQLHPRGLRSCAVMSAGAILNSSLGEEIDSHDAVLRFNAPTRGYEKDVGNKTTIRIINSQILT
 NPSSHFIIDSSLYKDVILVAWDPAPYSANLNLWYKPKDYNLFTPIYIQRQRNPNQPFYILHPKF IWQLWDI
 IQENTKEIQPNPPSSGFIGSFVKIGHIRACSEPRSRDCTPAWTTE

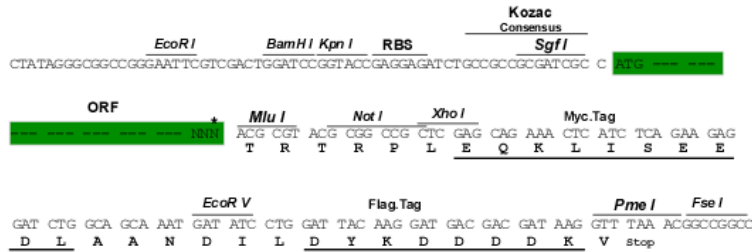
TRTRPLEQKLISEEDLAANDILDYKDDDDKV

Restriction Sites:

Sgfl-MluI

Cloning Scheme:

Cloning sites used for ORF Shutting:



* The last codon before the Stop codon of the ORF

ACCN: NM_001142352

ORF Size: 1398 bp

OTI Disclaimer: The molecular sequence of this clone aligns with the gene accession number as a point of reference only. However, individual transcript sequences of the same gene can differ through naturally occurring variations (e.g. polymorphisms), each with its own valid existence. This clone is substantially in agreement with the reference, but a complete review of all prevailing variants is recommended prior to use. [More info](#)

OTI Annotation: This clone was engineered to express the complete ORF with an expression tag. Expression varies depending on the nature of the gene.

Components: The ORF clone is ion-exchange column purified and shipped in a 2D barcoded Matrix tube containing 10ug of transfection-ready, dried plasmid DNA (reconstitute with 100 ul of water).

Reconstitution Method:

1. Centrifuge at 5,000xg for 5min.
2. Carefully open the tube and add 100ul of sterile water to dissolve the DNA.
3. Close the tube and incubate for 10 minutes at room temperature.
4. Briefly vortex the tube and then do a quick spin (less than 5000xg) to concentrate the liquid at the bottom.
5. Store the suspended plasmid at -20°C. The DNA is stable for at least one year from date of shipping when stored at -20°C.

RefSeq: [NM_001142352.2](#)
RefSeq Size: 1656 bp

RefSeq ORF: 1401 bp

Locus ID: 84620

UniProt ID: [Q96JF0](#)

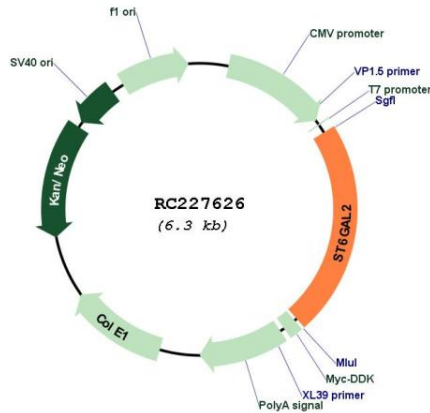
Cytogenetics: 2q12.3

Protein Families: Transmembrane

MW: 52.9 kDa

Gene Summary: This locus encodes a sialyltransferase. The encoded type II transmembrane protein catalyzes the transfer of sialic acid from CMP to an oligosaccharide substrate. Polymorphisms at this locus may be associated with variations in risperidone response in schizophrenic patients. Alternatively spliced transcript variants have been described. [provided by RefSeq, Jan 2012]

Product images:



Circular map for RC227626