

Product datasheet for RC227606

SEC61A2 (NM_001142627) Human Tagged ORF Clone

Product data:

Product Type:	Expression Plasmids
Product Name:	SEC61A2 (NM_001142627) Human Tagged ORF Clone
Tag:	Myc-DDK
Symbol:	SEC61A2
Mammalian Cell Selection:	Neomycin
Vector:	pCMV6-Entry (PS100001)
E. coli Selection:	Kanamycin (25 ug/mL)
ORF Nucleotide Sequence:	>RC227606 representing NM_001142627 Red=Cloning site Blue=ORF Green=Tags(s)

TTTTGTAATACGACTCACTATAGGGCGGCCGGGAATTCGTCGACTGGATCCGGTACCGAGGAGATCTGCC
GCC**CGATCGCC**

ATGGGCATCAAATTTTTAGAAGTTATCAAACCATTCTGTGCAGTTCTACCAGAAATTCAGAAACCGGAAA
GGAAAATCCAGTTTAGAGAGAAGGTTCTGTGGACTGCTATAACGCTCTTCATTTTCTTAGTGTGTTGTCA
GATCCCAGTGTGGGAATCATGTCATCAGATTCTGCAGATCCTTCTACTGGATGAGAGTTATTCTGGCT
TCCAATAGAGGAACCTTAATGGAATTGGGTATCTCCCAATTGTAACATCTGGTTTGATTATGCAGTTGT
TAGCTGGAGCCAAAATCATTGAAGTTGGAGATACACCGAAAGATAGAGCTTTATCCAATGGAGCCAGAA
ACTGTTTGGTATGATCATTACCATTGGCAAGCCATTGTGTATGTCATGACGGGGATGTATGGGGACCCT
GCAGAAATGGGTGCCGAATCTGTCTCCTGATCATCATTAGTTGTTTGTGCTGGTTTGATTGTGCTGC
TGTTAGATGAGCTGCTACAGAAGGTTACGGCTTGGGTCTGGATTTCCCTCTTTATTGCCACCAACAT
CTGTGAGACCATTGTCTGGAAGGCCTTGTAGTCCCCTACCATTAACTGGCAGAGGTTACTGAGTTTGTG
GGTGCAGTCATAGCTCTGTTCCATTTGTGGCCACCAGGACGGACAAAGTCCGAGCTTACGGGAGGCTT
TTTATCGGCAGAACTTACCCAATCTCATGAACCTATTGCTACAGTTTTTGTGTTGCTGTTGTTATATA
TTTCCAAGGATTCGCGTTGATCTGCCATTAAGTCGGCCGTTACCGAGGACAGTACAGCAGCTACCCC
ATCAAACCTTTTACACCTCCAACATCCCATCATCCTCCAGTCGGCCCTGGTGTCCAACCTGTATGTTA
TTTCCCAGATGCTGTCTGTTGATTTAGTGGAACCTTTTACTAGAAATTTACTAGGACAGTGGGCCGATGT
CAGTGGGGGAGGACCCGACGTTCTTACCAGTTGGAGGCTTTGTTACTATCTTCTCCTCCTGAGTCC
ATGGGCGCCATCTTTGAGGATCCTGTCCATGTCGTTGTTTATATCATCTTCATGTTGGGGTCATGTGCAT
TCTTCTCTAAGACATGGATTGAAGTGTCTGGTTCCTCAGCCAAAGATGTAGCTAAACAGCTGAAAGAACA
GCAGATGGTAATGAGGGGCCACCGAGATACCTCTATGGTTCATGAGCTTAATAGACAAAAGTGAAGTTA
AGAAGTGAAGGGAGAAGGAAGACATTTACAAAAGGATACTTCTAC

ACGCGTACGCGGCCGCTCGAGCAGAACTCATCTCAGAAGAGGATCTGGCAGCAAATGATATCCTGGATT
ACAAGGATGACGACGATAAGGTTTAA



[View online »](#)

Protein Sequence: >RC227606 representing NM_001142627
Red=Cloning site Green=Tags(s)

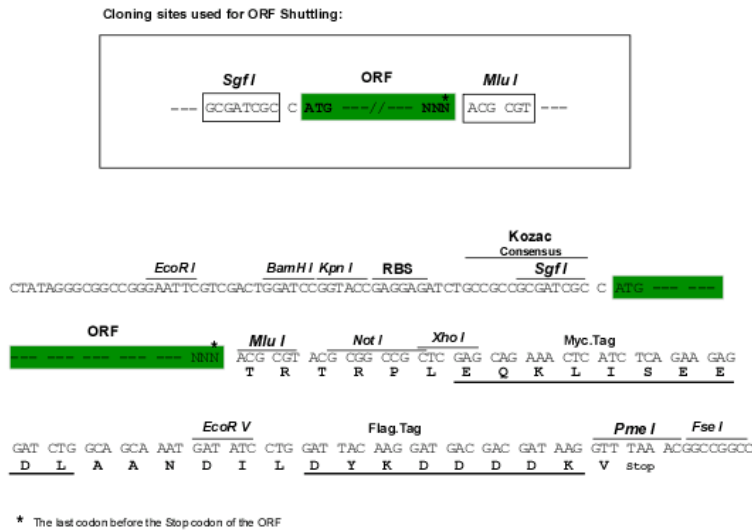
MGIKFLEVIKPFCAVLPEIQKPERKIQFREKVLWTAITLFIPLVCCQIPLFGIMSSDSADPFYWMRVILA
 SNRGTLMELGISPIVTSGLIMQLLAGAKIIEVGDTPKDRALFNGAQKLFGMIITIGQAIIVYMTGMYGDP
 AEMGAGICLLIIIQLFVAGLIVLLLDELLQKGYGLGSGISLFIATNICETIVWKAFSPTTINTGRGTEFE
 GAVIALFHLLATRTDKVRALREAFYRQNLPLMNLIAIVFVAVVIYFQGFVDLPIKSARYRGQYSSYP
 IKLFYTSNIPIILQSALVSNLYVISQMLSVRFSGNFLVNLGQWADVSGGGPARSYVVGGLCYLLSPPES
 MGAIFEDPVHVYIIFMLGSCAFFSKTWIEVSGSSAKDVAKQLKEQVMRGRHRTSMVHELNRPKVKL
 RRWKGEGRHFTKRILFY

TRTRPLEQKLISEEDLAANDILDYKDDDDKV

Chromatograms: https://cdn.origene.com/chromatograms/mk8059_h08.zip

Restriction Sites: SgfI-MluI

Cloning Scheme:



ACCN: NM_001142627

ORF Size: 1311 bp

OTI Disclaimer: The molecular sequence of this clone aligns with the gene accession number as a point of reference only. However, individual transcript sequences of the same gene can differ through naturally occurring variations (e.g. polymorphisms), each with its own valid existence. This clone is substantially in agreement with the reference, but a complete review of all prevailing variants is recommended prior to use. [More info](#)

OTI Annotation: This clone was engineered to express the complete ORF with an expression tag. Expression varies depending on the nature of the gene.

Components: The ORF clone is ion-exchange column purified and shipped in a 2D barcoded Matrix tube containing 10ug of transfection-ready, dried plasmid DNA (reconstitute with 100 ul of water).

Reconstitution Method:

1. Centrifuge at 5,000xg for 5min.
2. Carefully open the tube and add 100ul of sterile water to dissolve the DNA.
3. Close the tube and incubate for 10 minutes at room temperature.
4. Briefly vortex the tube and then do a quick spin (less than 5000xg) to concentrate the liquid at the bottom.
5. Store the suspended plasmid at -20°C. The DNA is stable for at least one year from date of shipping when stored at -20°C.

RefSeq: [NM_001142627.2](#), [NP_001136099.1](#)

RefSeq ORF: 1314 bp

Locus ID: 55176

UniProt ID: [Q9H9S3](#)

Cytogenetics: 10p14

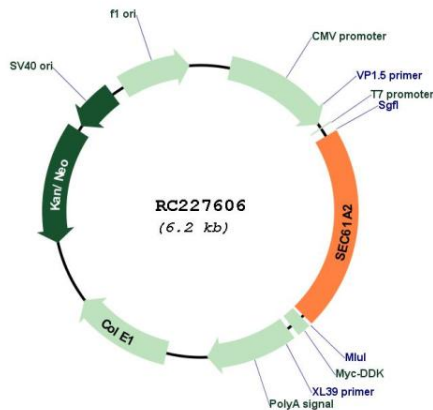
Protein Families: Transmembrane

Protein Pathways: Vibrio cholerae infection

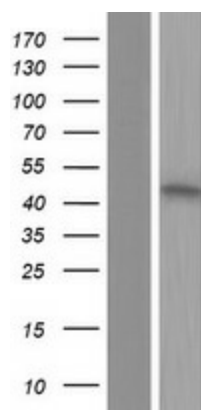
MW: 48.6 kDa

Gene Summary: The protein encoded by this gene has similarity to a mouse protein which suggests a role in the insertion of secretory and membrane polypeptides into the endoplasmic reticulum. It may also be required for the assembly of membrane and secretory proteins. Alternative splicing results in multiple transcript variants. [provided by RefSeq, Dec 2008]

Product images:



Circular map for RC227606



Western blot validation of overexpression lysate (Cat# [LY428221]) using anti-DDK antibody (Cat# [TA50011-100]). Left: Cell lysates from untransfected HEK293T cells; Right: Cell lysates from HEK293T cells transfected with RC227606 using transfection reagent MegaTran 2.0 (Cat# [TT210002]).