

Product datasheet for RC227604

CHRD1 (NM_001143983) Human Tagged ORF Clone

Product data:

Product Type:	Expression Plasmids
Product Name:	CHRD1 (NM_001143983) Human Tagged ORF Clone
Tag:	Myc-DDK
Symbol:	CHRD1
Synonyms:	CHL; dA141H5.1; MGC1; MGCN; NRLN1; VOPT
Mammalian Cell Selection:	Neomycin
Vector:	pCMV6-Entry (PS100001)
E. coli Selection:	Kanamycin (25 ug/mL)
ORF Nucleotide Sequence:	>RC227604 representing NM_001143983 Red=Cloning site Blue=ORF Green=Tags(s)

TTTTGTAATACGACTCACTATAGGGCGCCGGGAATTCGTCGACTGGATCCGGTACCGAGGAGATCTGCC
GCC**CGATCGCC**

ATGAGAAAAAGTGGAAATGGGAGGCATGAAATACATCTTTTCGTTGTTGTTCTTTCTTTGCTAGAAG
GAGGCAAAACAGAGCAAGTAAAACATTCAGAGACATATTGCATGTTTCAAGACAAGAAAGTACAGAGTGGG
TGAGAGATGGCATCCTTACCTGGAACCTTATGGGTTGGTTTACTGCGTGAAGTGCATCTGCTCAGAGAAT
GGGAATGTGCTTTCAGCCGAGTCAGATGTCCAAATGTTCAATGCCTTTCTCCTGTGCATATTCCTCATC
TGTGCTGCCCTCGCTGCCAGGAGATGGAGAAGTGCATGGGAACATTCTGATGGTGATATCTTCGGCA
ACCTGCCAACAGAGAAGCAAGACATTCTTACCACCGCTCTCACTATGATCCTCCACCAAGCCGACAGGCT
GGAGGTCTGTCCCGCTTTCCTGGGGCCAGAAGTCAACGGGGAGCTCTTATGGATCCCAGCAAGCATCAG
GAACCATGTGCAAAATTGTCAATAACAACAAGCATGGACAAGTGTGTTTCCAATGGAAAGAC
CTATTCTCATGGCGAGTCTTGGCACCCAAACCTCCGGGCATTTGGCATTGTGGAGTGTGTGCTATGTACT
TGTAATGTCACCAAGCAAGAGTGAAGAAAATCCACTGCCCAATCGATACCCCTGCAAGTATCCTCAA
AAATAGACGAAAATGCTGCAAGGTGTGTCCAGGTAAGAAAAGCAAGAAAGAACTCCAGGCCAAAGCTT
TGACAATAAAGGCTACTTCTGCGGGGAAGAAACGATGCCTGTGTATGAGTCTGTATTATGAGGATGGG
GAGACAACCAGAAAAATAGCACTGGAGACTGAGAGACCACCTCAGGTAGAGGTCCAGTTTGGACTATTC
GAAAGGGCATTCTCCAGCACTTCCATATTGAGAAGATCTCAAGAGGATGTTTGAGGAGTTCCTCACTT
CAAGCTGGTGACCAGAACAACCTGAGCCAGTGAAGATCTTACCAGGAGAGCTCAGATCAGCCAG
ATGTGTTCAAGTCGTGTATGCAGAACAGAGCTTGAAGATTTAGTCAAGGTTTTGTACCTGGAGAGATCTG
AAAAGGGCCACTGT

ACGGTACGGGCGCTCGAGCAGAAACTCATCTCAGAAGAGGATCTGGCAGCAATGATATCCTGGATT
ACAAGGATGACGACGATAAGGTTTAA



[View online »](#)

Protein Sequence: >RC227604 representing NM_001143983
Red=Cloning site Green=Tags(s)

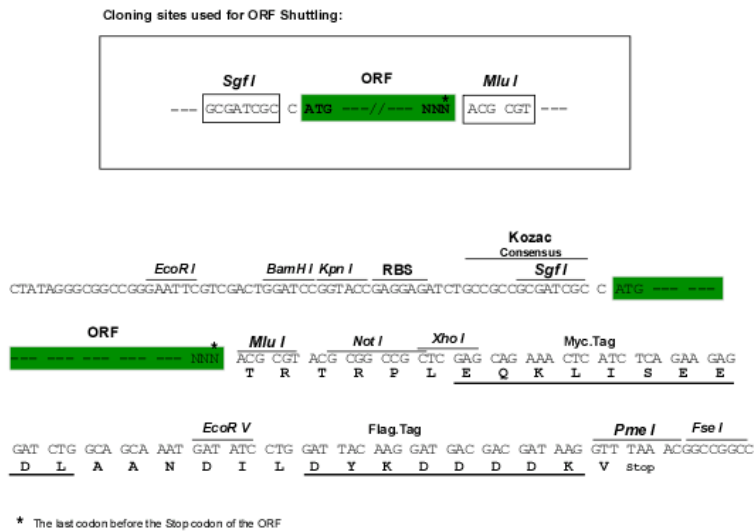
MRKKWKMGGMKYIFSLFFLLLEGGKTEQVKHSETYCMFQDKKYRVGERWHPYLEPYGLVYCVNCICSEN
 GNVLC SRV RCPNVHCLSPVHIPHLCCPRCPGDGELSWEHSDGDI FRQANREARHSYHRSHYDPPPSRQA
 GGLSRFPGARSHRGALMDSQQASGTIVQIVINNKHKGQVCVSNKTYSHGESWHPNLRAFGIVECVLCT
 CNVTKQECKKIHCNRYPCYPQKIDGKCKVCPGKKAKEELPGQSF DNKGYFCGEETMPVYESVFMEDG
 ETTRKIALETERPPQVEVHWVIRK GILQHFHIEKISKRMFEELPHFKLVTRTTLSQWKIFTEGEAQISQ
 MCSSRVCRTELEDLVKVL YL ERSEK GHC

TRTRPLEQKLISEEDLAANDILDYKDDDDKV

Chromatograms: https://cdn.origene.com/chromatograms/mk8055_g12.zip

Restriction Sites: SgfI-MluI

Cloning Scheme:



ACCN: NM_001143983

ORF Size: 1134 bp

OTI Disclaimer: The molecular sequence of this clone aligns with the gene accession number as a point of reference only. However, individual transcript sequences of the same gene can differ through naturally occurring variations (e.g. polymorphisms), each with its own valid existence. This clone is substantially in agreement with the reference, but a complete review of all prevailing variants is recommended prior to use. [More info](#)

OTI Annotation: This clone was engineered to express the complete ORF with an expression tag. Expression varies depending on the nature of the gene.

Components: The ORF clone is ion-exchange column purified and shipped in a 2D barcoded Matrix tube containing 10ug of transfection-ready, dried plasmid DNA (reconstitute with 100 ul of water).

Reconstitution Method:

1. Centrifuge at 5,000xg for 5min.
2. Carefully open the tube and add 100ul of sterile water to dissolve the DNA.
3. Close the tube and incubate for 10 minutes at room temperature.
4. Briefly vortex the tube and then do a quick spin (less than 5000xg) to concentrate the liquid at the bottom.
5. Store the suspended plasmid at -20°C. The DNA is stable for at least one year from date of shipping when stored at -20°C.

RefSeq: [NM_001143983.3](#)

RefSeq ORF: 1137 bp

Locus ID: 91851

UniProt ID: [Q9BU40](#)

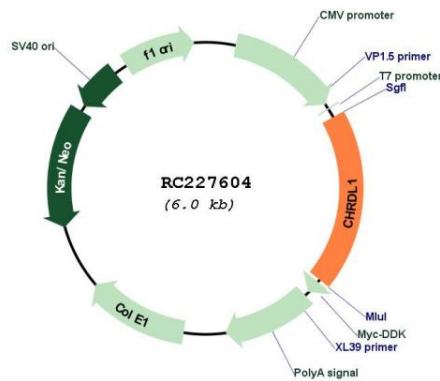
Cytogenetics: Xq23

Protein Families: ES Cell Differentiation/IPS, Secreted Protein

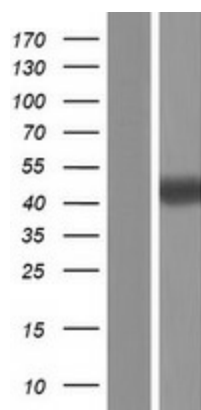
MW: 43.52 kDa

Gene Summary: This gene encodes an antagonist of bone morphogenetic protein 4. The encoded protein may play a role in topographic retinotectal projection and in the regulation of retinal angiogenesis in response to hypoxia. Alternatively spliced transcript variants encoding different isoforms have been described. [provided by RefSeq, Jan 2009]

Product images:



Circular map for RC227604



Western blot validation of overexpression lysate (Cat# [LY428443]) using anti-DDK antibody (Cat# [TA50011-100]). Left: Cell lysates from untransfected HEK293T cells; Right: Cell lysates from HEK293T cells transfected with RC227604 using transfection reagent MegaTran 2.0 (Cat# [TT210002]).