

Product datasheet for RC227583

SERPINB2 (NM_001143818) Human Tagged ORF Clone

Product data:

Product Type:	Expression Plasmids
Product Name:	SERPINB2 (NM_001143818) Human Tagged ORF Clone
Tag:	Myc-DDK
Symbol:	SERPINB2
Synonyms:	HsT1201; PAI; PAI-2; PAI2; PLANH2
Mammalian Cell Selection:	Neomycin
Vector:	pCMV6-Entry (PS100001)
E. coli Selection:	Kanamycin (25 ug/mL)
ORF Nucleotide Sequence:	>RG227583 representing NM_001143818 Red=Cloning site Blue=ORF Green=Tags(s)

CTATAGGGCGGCCGGAATTCGTCTGACTGGATCCGGTACCGAGGAGATCTGCC
GCC**CGATCGCC**

ATGGAGGATCTTTGTGTGGCAAACACACTCTTTGCCCTCAATTTATTCAAGCATCTGGCAAAGCAAGCC
CCACCCAGAACCCTCTCCTCTCCCATGGAGCATCTCGTCCACCATGGCCATGGTCTACATGGGCTCCAG
GGGAGCAGCCGAAGACCAGATGGCCAAGGTGCTTCAGTTAATGAAGTGGAGCCAATGCAGTTACCC
ATGACTCCAGAGAACTTTACCAGCTGTGGTTCATGCAGCAGATCCAGAAGGGTAGTTATCCTGATGCGA
TTTTGCAGGCACAAGCTGCAGATAAAATCCATTATCCTTCCGCTCTCTCAGCTCTGCAATCAATGCATC
CACAGGGAATTTACTGGAAAGTGCAATAAGCTGTTTGGTGAGAAGTCTGCGAGCTTCCGGGAAGAA
TATATTCGACTCTGTGAGAAATATTACTCCTCAGAACCCAGGCAGTAGACTTCCTAGAATGTGCAGAAG
AAGCTAGAAAAAGATTTATTCCTGGGTCAAGACTCAAACCAAAGGCAAAATCCCAAACCTGTTACCTGA
AGGTTCTGTAGATGGGGATACCAGGATGGTCTGGTGAATGCTGTCTACTTCAAAGGAAAGTGGAAAAC
CCATTTGAGAAGAACTAAATGGGCTTTATCCTTCCGTGTAACCTCGGCTCAGCGCACACCTGTACAGA
TGATGTAAGTGGTGAAGCTAAACATTGGATACATAGAAGACCTAAAGGCTCAGATTCAGAACTCCC
ATATGCTGGAGATGTTAGCATGTTCTTGTGCTTCCAGATGAAATTGCCGATGTGTCCACTGGCTGGAG
CTGCTGGAAAGTAAAATACCTATGACAACTCAACAAGTGGACCAGCAAAGACAAAATGGCTGAAGATG
AAGTTGAGGTATACATACCCAGTTCAAATTAGAAGAGCATTATGAACTCAGATCCATTCTGAGAAGCAT
GGGCATGGAGGACGCCTTCAACAAGGGACGGGCAATTTCTCAGGGATGTCGGAGAGGAATGACCTGTTT
CTTTCTGAAGTGTCCACCAAGCCATGGTGGATGTGAATGAGGAGGGCACTGAAGCAGCCCTGGCACAG
GAGGTGTATGACAGGGAGAAGTGGACATGGAGGCCACAGTTTGTGGCAGATCATCCTTTCTTTTTCT
TATTATGCATAAGATAACCAACTGCATTTATTTTTCGGCAGATTTTCTCACCC

ACGCGTACGCGGCCGCTCGAG - GFP Tag - GTTTAA



[View online »](#)

Protein Sequence: >RC227583 protein sequence
Red=Cloning site Green=Tags(s)

MEDLCVANTL FALNLFKHLAKASPTQNLFLSPWSISSTMAMVYMGSRGSTDQMAKVLQFNEVGANAVTP
 MTPENFTSCGFMQIQKGSYPDAILQAQAADKIHSSFRSLSSAINASTGNYLLESVNKLFGEKSASFREE
 YIRLCQKYSSPEQAVDFLECAEEARKKIYSWVKQTQTKGKIPNLLPEGSVDGDRMVLVNAVYFKGKWK
 PFEKLNGLYPRVNSAQRTPVQMMYLREKLNIGYIEDLKAQILELPYAGDVSMFLLL PDEIADVSTGLE
 LLESEITYDKLNKWT SKDKMAEDEVEVYIPQFKLEEYELRSILRSMGMEDAFNKGRANFSGMSERNDLF
 LSEVFHQAMVDVNEEGTEAAAGTGGVMTGRTGHGGPQFVADHPFLFLIMHKITNCILFFGRFSSP

TRTRPLEQKLISEEDLAANDILDYKDDDDKVV

Chromatograms: https://cdn.origene.com/chromatograms/mk6055_e04.zip

Restriction Sites: SgfI-MluI

Cloning Scheme:



* The last codon before the Stop codon of the ORF

ACCN: NM_001143818

ORF Size: 1245 bp

OTI Disclaimer: The molecular sequence of this clone aligns with the gene accession number as a point of reference only. However, individual transcript sequences of the same gene can differ through naturally occurring variations (e.g. polymorphisms), each with its own valid existence. This clone is substantially in agreement with the reference, but a complete review of all prevailing variants is recommended prior to use. [More info](#)

OTI Annotation: This clone was engineered to express the complete ORF with an expression tag. Expression varies depending on the nature of the gene.

Components: The ORF clone is ion-exchange column purified and shipped in a 2D barcoded Matrix tube containing 10ug of transfection-ready, dried plasmid DNA (reconstitute with 100 ul of water).

Reconstitution Method:

1. Centrifuge at 5,000xg for 5min.
2. Carefully open the tube and add 100ul of sterile water to dissolve the DNA.
3. Close the tube and incubate for 10 minutes at room temperature.
4. Briefly vortex the tube and then do a quick spin (less than 5000xg) to concentrate the liquid at the bottom.
5. Store the suspended plasmid at -20°C. The DNA is stable for at least one year from date of shipping when stored at -20°C.

RefSeq: [NM_001143818.1](#), [NP_001137290.1](#)

RefSeq Size: 2180 bp

RefSeq ORF: 1248 bp

Locus ID: 5055

UniProt ID: [P05120](#)

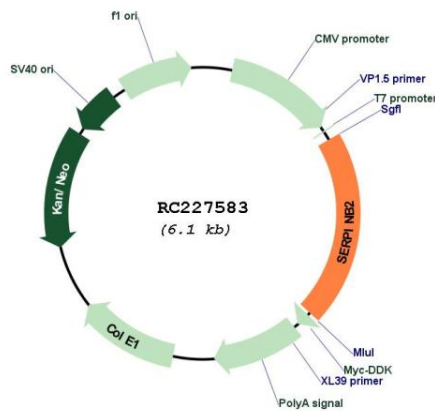
Cytogenetics: 18q21.33-q22.1

Protein Families: Druggable Genome, Secreted Protein

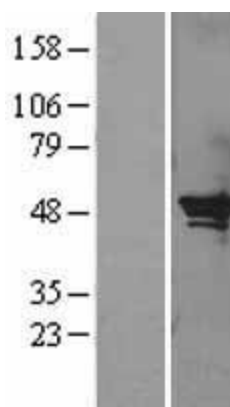
MW: 46.6 kDa

Gene Summary: Inhibits urokinase-type plasminogen activator. The monocyte derived PAI-2 is distinct from the endothelial cell-derived PAI-1.[UniProtKB/Swiss-Prot Function]

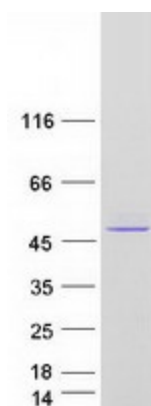
Product images:



Circular map for RC227583



Western blot validation of overexpression lysate (Cat# [LY428363]) using anti-DDK antibody (Cat# [TA50011-100]). Left: Cell lysates from untransfected HEK293T cells; Right: Cell lysates from HEK293T cells transfected with RC227583 using transfection reagent MegaTran 2.0 (Cat# [TT210002]).



Coomassie blue staining of purified SERPINB2 protein (Cat# [TP327583]). The protein was produced from HEK293T cells transfected with SERPINB2 cDNA clone (Cat# RC227583) using MegaTran 2.0 (Cat# [TT210002]).