

Product datasheet for **RC227579**

FASTKD2 (NM_001136194) Human Tagged ORF Clone

Product data:

Product Type:	Expression Plasmids
Product Name:	FASTKD2 (NM_001136194) Human Tagged ORF Clone
Tag:	Myc-DDK
Symbol:	FASTKD2
Synonyms:	COXPD44; KIAA0971
Mammalian Cell Selection:	Neomycin
Vector:	pCMV6-Entry (PS100001)
E. coli Selection:	Kanamycin (25 ug/mL)



[View online »](#)

**ORF Nucleotide
Sequence:**

>RC227579 ORF sequence
 Red=Cloning site Blue=ORF Green=Tags(s)

TTTTGTAATACGACTCACTATAGGGCGGCCGGAATTCGTCGACTGGATCCGGTACCGAGGAGATCTGCC
 GCC**CGGATCGCC**

ATGTTGACAACCTTTGAAGCCATTTGGAAGTGTTCAGTGGAGAGCAAAATGAATAACAAAGCGGGCTCCT
 TTTTCTGGAACCTTAGACAATTCAGTACATTAGTTTCAACAAGCAGAAGCTATGAGGCTATGTTGTTGGG
 ACTTTGCAAACCAAAAATAGTTCATTCAAAGTGAACATTTTAAATAACTTTTATAACAGAAATGCAATCA
 ACTGATATCATTAGATATCTCTTCAGGATGCATTCATTTTAAATCAGATGTTGGCTTTCAAACAAAGG
 GCATAAGCACTTAACAGCCCTTAGAATTGAAAGACTACTTTATGCTAAAAGACTGTTTTTGGACTCAA
 GCAGTCTCTTGTCCCTGTTGATAAATCTGATGATGAATTGAAGAAAGTAAACCTTAATCATGAAGTCTCC
 AATGAAGATGTTCTTACCAAGGAAACAAAACCAACCGTATCAGCAGTAGAAAAGTCTGAGGAATGTA
 ATTCCTGAGTGTGTTAGATGCATTTTCAAAGCGCCACATTTCTAGTAGCAACTATTTACAGC
 AATGTGGACAATTGCCAAAAGACTGTCTGATGACCAGAAGCGCTTTGAAAACGACTGATGTTTAGCCAC
 CCTGCATTTAATCAGCTCTGTGAACATATGATGAGAGAAGCCAAGATCATGCAGTATAAGTACCTACTGT
 TCAGTCTTCACGCCATAGTGAAGCTTGGAAATCCCTCAGAACACTATTTTGGTGCAGACTTTGCTGAGGGT
 GACCCAGGAACGTATCAATGAGTGTGATGAGATATGCCTTTCAGTTTTGTCAACTGTTTTAGAGGCAATG
 GAACCATGCAAGAATGTTTATGTTCTACGAACGGGATTCAGAATACTAGTTGATCAGCAAGTTTGGAAAA
 TAGAAGATGTCTTACATTACAAGTTGTGATGAAGTGTATTGGAAAAGATGCACCGATTGCTCTTAAGAG
 GAAACTGGAGATGAAAGCCTTGAAGGAAATAGACAGATTTTCTGTTTTGAATAGCCAACACATGTTTGA
 GTACTAGCTGCCATGAATCACCGATCTTATACTCCTGGATGAATGCAGTAAGGTGGTCTAGATAATA
 TCCATGGGTGTCCTTTAAGAATAATGATCAACATATTGCAGTCTGCAAAGACCTCCAGTACCATAATTT
 GGATCTCTTCAAGGGACTTGCAGATTATGTGGCTGCAACTTTCGACATCTGGAAGTTCAGAAAAGTTCTT
 TTTATCTCATTTTATTTGAAAACCTTGGCTTTGACCTGTTGGTTAATGGACCTGTTTATGAAGAGAA
 TAGTAGAGGATCCTGAATCCCTAAACATGAAAACATTCTATCTATTCTCATACTTACTCTTCTCTCAA
 TCATGTCTACAAATGCCAGAACAAGAACAGTTCGTGGAAGTTATGGCTAGTGTCTGACTGGTTATCTT
 CACACTATTTCTTCTGAAAACCTTATTGGATGCAGTATATTCATTTTGGCTGATGAATTACTTTCCCTGG
 CTCCTTTTAAATCAGCTTCTGCAAAGACATCATCAGTGAAGTGTGACATCAGATGACATGAAGAATGC
 TTACAAGTGCATACTTTGGATACTTGTCTAAAACCTTGTGATACTGTCTATCTGAGGGACATAGCCTTG
 TCACTCCACAGCTGCCGCGGAGCTGCCATCGTCACATACAAATGCAAAGGTGGCAGAGGTGCTGAGCA
 GCCTTCTGGGAGGTGAAGGACACTTCTCAAAGGATGTGCACTTGGCACACAATTATCATATTGATTTTGA
 AATCAGAATGGACACTAACAGGAATCAAGTGTACCACTTTCTGATGTGGATACAACCTTCTGCTACAGAT
 ATTCAAAGAGTAGCTGTGCTATGTGTTCCAGATCTGCTTATTGTTTGGGTTCAAGCCACCCAGAGGAT
 TCCTTGCTATGAAAATGCGGCATTTGAATGCAATGGGTTTTTCAATGTGATCTTGGTCAATAACTGGGAGAT
 GGCAAACCTAGAGATGGAAGATGCAGTCAATTTTGAAGACTAAAATCTATTAGTAGAAGCTCTTCTCT
 GTTGCTGCTGTAATGTGCAAAGCACACAA

ACGCGTACGCGGCCGCTCGAGCAGAACTCATCTCAGAAGAGGATCTGGCAGCAAATGATATCCTGGATT
 ACAAGGATGACGACGATAAGGTTTAA

Protein Sequence: >RC227579 protein sequence
Red=Cloning site Green=Tags(s)

```

MLTTLKPFGSVSVESKMNNKAGSFFWNLRFSTLVSTSRMRLCCLGLCKPKIVHSNWNILNHFHNRMQS
TDIIRYLFQDAFIFKSDVGFQTKGISTLTALRIERLLYAKRFFDSKQSLVPVDKSDDELKKNLNEHVS
NEDVLTKETKPNRISRRKLSSECNLSVDLDAFSKAPTFPSSNYFTAMWTIAKRLSDDQKRFKRLMFSH
PAFNQLCEHMMREAKIMQYKYLFLSHAIYKLGIPQNTILVQTLRLVTVQERINECDEICLSVLSTVLEAM
EPCKNVHVLRTGFRILVDQVVKIEDVFTLQVVMKIGKDAPIALKRKLKEMKALRELDLRFVLSNSQHMFE
VLAAMNHRSLILLDECSKVVLNDNIHGCLPLRIMINILQSCCKDLQYHNLDFKGLADYVAATFDIWKFRKVL
FILILFENLGRPVGLMDLFMKRIVEDPELSNMKNILSILHTYSSLNHVYKQNKQFVEVMASALTGYL
HTISSENLDAVYSFCLMNYFPLAPFNQLLQKDIISELLTSDDMKNAYKLHLDLDTCKLDDTVYLRDIAL
SLPQLPRELPSSHTNAKVAEVLSSLLGGEGHFSKDVHLPNHYHIDFEIRMDTNRNQVLPVSDVDTTSATD
IQRVAVLCVSRSAAYCLGSSHPRGFLAMKMRHLNAMGFHVILVNNWEMDKLEMEDAVTFLKTKIYSVEALP
VAAVNVQSTQ
    
```

TRTRPLEQKLISEEDLAANDILDYKDDDDKV

Chromatograms: https://cdn.origene.com/chromatograms/mk6323_h04.zip

Restriction Sites: SgfI-MluI

Cloning Scheme:



* The last codon before the Stop codon of the ORF

ACCN: NM_001136194

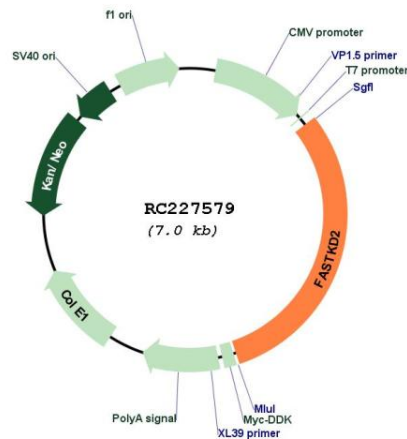
ORF Size: 2130 bp

OTI Disclaimer: The molecular sequence of this clone aligns with the gene accession number as a point of reference only. However, individual transcript sequences of the same gene can differ through naturally occurring variations (e.g. polymorphisms), each with its own valid existence. This clone is substantially in agreement with the reference, but a complete review of all prevailing variants is recommended prior to use. [More info](#)

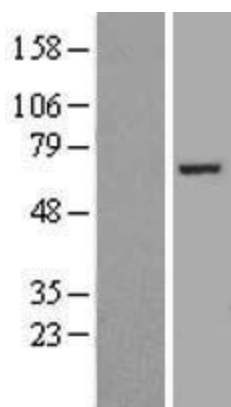
OTI Annotation: This clone was engineered to express the complete ORF with an expression tag. Expression varies depending on the nature of the gene.

Components:	The ORF clone is ion-exchange column purified and shipped in a 2D barcoded Matrix tube containing 10ug of transfection-ready, dried plasmid DNA (reconstitute with 100 ul of water).
Reconstitution Method:	<ol style="list-style-type: none">1. Centrifuge at 5,000xg for 5min.2. Carefully open the tube and add 100ul of sterile water to dissolve the DNA.3. Close the tube and incubate for 10 minutes at room temperature.4. Briefly vortex the tube and then do a quick spin (less than 5000xg) to concentrate the liquid at the bottom.5. Store the suspended plasmid at -20°C. The DNA is stable for at least one year from date of shipping when stored at -20°C.
RefSeq:	<u>NM_001136194.1, NP_001129666.1</u>
RefSeq Size:	6945 bp
RefSeq ORF:	2133 bp
Locus ID:	22868
UniProt ID:	<u>Q9NYY8</u>
Cytogenetics:	2q33.3
MW:	81.5 kDa
Gene Summary:	This gene encodes a protein that is localized in the mitochondrial inner compartment and that may play a role in mitochondrial apoptosis. Nonsense mutations have been reported to result in cytochrome c oxidase deficiency. [provided by RefSeq, Oct 2008]

Product images:



Circular map for RC227579



Western blot validation of overexpression lysate (Cat# [LY427842]) using anti-DDK antibody (Cat# [TA50011-100]). Left: Cell lysates from untransfected HEK293T cells; Right: Cell lysates from HEK293T cells transfected with RC227579 using transfection reagent MegaTran 2.0 (Cat# [TT210002]).