

Product datasheet for **RC227573**

OTUD5 (NM_001136157) Human Tagged ORF Clone

Product data:

Product Type:	Expression Plasmids
Product Name:	OTUD5 (NM_001136157) Human Tagged ORF Clone
Tag:	Myc-DDK
Symbol:	OTUD5
Synonyms:	DUBA; MCAND
Mammalian Cell Selection:	Neomycin
Vector:	pCMV6-Entry (PS100001)
E. coli Selection:	Kanamycin (25 ug/mL)



[View online »](#)

ORF Nucleotide Sequence:

>RC227573 representing NM_001136157
 Red=Cloning site Blue=ORF Green=Tags(s)

CTATAGGGCGGCCGGGAATTCGTCGACTGGATCCGGTACCGAGGAGATCTGCCGCCGCGATCGCCGGCGC
 GCC

ATGACTATACTCCCCAAAAGAAGCCGCCCTCCGACGCCACCCGCCAACGAGCCGCCGCCGCCG
 GGCCGATGCCCCGGCGCCGCGCGCGGAGGTGTGGCGTGGCGGGCGGCACGGCGTGGCGG
 CGCGATCGCGACCGTACTCCGCGCTCGTGGGGCCCGTCCGCGAGCTTCGCCACCGCCTCAAGGCCCG
 CTACCAGGACCGCGGGCGCTCTTCATCGCTGGGCGTGGCCGTGCCGCTGGTGCAGTGGCGGGTCCCC
 GGCCACAACAGGCTTCTCCACCTCCTTGCGGGGCCAGGTGGTCCCGCGGGCGTCCCGCGACGCGCT
 GGGCGCAGCGCGGGGTGTGGTGGCGGGCGTGGTGGTGGTGGTGGTGGTGGTGGTGGTGGTGGTGGC
 GGCTGCTGCTCCGGCCGGGCACAGCAAGCGCGACGTAAGCTCCCGGGTGGCGGGTGGCGGGG
 GCAGTCCCGAGCGTGGAGGTCGGCGCAGGCTACAACAGTGGAGACGATAGAGCGGCTGCAGCAG
 CATCGAGGCTATGGACCCTGCCACTGTCGAGCAGCAGGAGCATTGGTTTAAAAGGCCCTACGAGACAAG
 AAGGGCTTCATCAAGCAGATGAAGGAGGATGGCGCCTGTCTCTCCGGGCTGTAGTACCAGGTGT
 ATGGAGACCAGGACATGCATGAGGTTGTGCGAAAGCATTGCATGGACTATCTGATGAAGAATGCCGACTA
 TTCTCCAATATGTCACAGAGGACTTTACCACCTACATTAACAGGAAGCGGAAAAACAATTGCCATGGC
 AACCACATTGAGATGCAGGCCATGGCAGAGATGTACAACCGTCTGTGGAGGTGTACCAGTACAGCACAG
 AACCCATCAACACATTCCATGGGATACATAAAACGAGGACGAACCCATTCGTGTTAGCTACCATCGGAA
 TATCCACTATAATTCAGTGGTGAATCCTAACAAGGCCACCATTGGTGTGGGGTGGGCTGCCATCATT
 AAACCAGGGTTTGCAGAGCAGTCTGTGAAGAATGCCATAAAAACATCGGAGGAGTGTGATGAAC
 AGCAGATGCTAGAAGACAAGAAACGGGCCACAGACTGGGAGGCCACAAATGAAGCCATCGAGGAGGAT
 GGCTCGGGAATCCTACCTGCAGTGGTTCGGGATCAGGAGAAACAGGCTCGCCAGGTCGAGGCCCAGC
 CAGCCCCGAAAGCCAGCGCCACATGCAGTTCGGCCACAGCAGCAGCCTCCAGTGGCCTGGAGGAGTGA
 CTAGCCGGTCCCGCGGCAGCGGAGTTCAGCCTCGTACCTGAGCACCTGAGCTGCATGCTGAATTGGG
 CATGAAGCCCCCTCCCGAGGACTGTTTTAGCTCTTGCCAAACCTCCTTCGCCCTGTGCGCCAGGTACA
 AGCAGTCACTTCGGCAGGGGCCAGCCGGCACTTCCCCCTGTGTCCCTCTACCCTGCTTTGGAGT
 GCCGGGCCCTCATTGAGCAGATGCCCCCTGCTCTTGGTCTGAATGACTGGGATGATGATGAGATCCT
 AGCTTCGGTGTGGCAGTGTCCCAACAGGAATACCTAGACAGTATGAAGAAAAACAAGTGCACAGAGAC
 CGCCCCCAGACAAGAGT

ACGCGTACGCGGGCCGCTCGAGCAGAACTCATCTCAGAAGAGGATCTGGCAGCAAATGATATCCTGGATT
 ACAAGGATGACGACGATAAGGTTTAA

Protein Sequence:

>RC227573 representing NM_001136157
 Red=Cloning site Green=Tags(s)

MTILPKKKPPPDADPANEPMPMPAPRRGGVGVGGGTGVGGDRDRDSGVVGARPRASPPQGP
 LPGPPGALHRWALAVPPGAVAGPRPQASPPPCGGPGGGPGDALGAAAAGVGAAGVVVGVGAVGVG
 GCCSGPGHSKRRRQAPGVGAVGGSPEREVEVAGYNSSEDEYEAARIEAMDPATVEQEHWFELRDK
 KGFIIKQMKEDGACL FRAVADQVYGDQDMHEVVRKHCM DYLMKNADYF SNVYTEDFTTYINRKRKNCHG
 NHIEMQAMAEMYNRVVEVYQYSTEPINTFHGIHQNEDEPIRVSYHRNIHYSVVPNKATIGVGLGLPSF
 KPGFAEQSLMKNAIKTSEESWIEQMLEDKKRATDWEATNEAIEEQVARESYLQWLRDQEKQARQVRGPS
 QPRKASATCSSATAAASSGLEWT SRSPRQRSSASSPEHPELHAE LGMKPPSPGTVLALAKPPSPCAPGT
 SSQF SAGADRATSPLVSLYPALECRALIQMSPSAFGLNDWDDDEILASVLAVSQEYLD SMKKNKVHRD
 PPPDKS

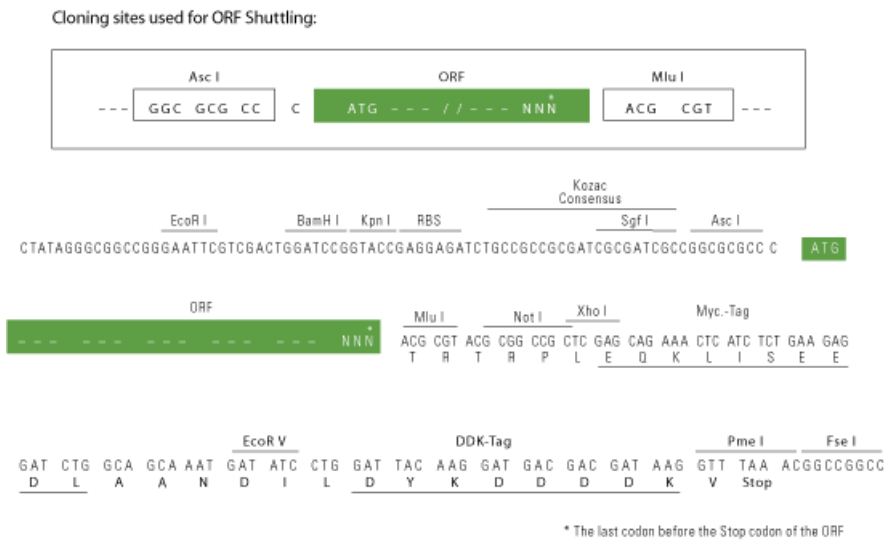
TRTRPLEQKLISEEDLAANDILDYKDDDDKV

Chromatograms:

https://cdn.origene.com/chromatograms/mk8006_e06.zip

Restriction Sites:

Ascl-MluI

Cloning Scheme:


ACCN: NM_001136157

ORF Size: 1698 bp

OTI Disclaimer: The molecular sequence of this clone aligns with the gene accession number as a point of reference only. However, individual transcript sequences of the same gene can differ through naturally occurring variations (e.g. polymorphisms), each with its own valid existence. This clone is substantially in agreement with the reference, but a complete review of all prevailing variants is recommended prior to use. [More info](#)

OTI Annotation: This clone was engineered to express the complete ORF with an expression tag. Expression varies depending on the nature of the gene.

Components: The ORF clone is ion-exchange column purified and shipped in a 2D barcoded Matrix tube containing 10ug of transfection-ready, dried plasmid DNA (reconstitute with 100 ul of water).

Reconstitution Method:

1. Centrifuge at 5,000xg for 5min.
2. Carefully open the tube and add 100ul of sterile water to dissolve the DNA.
3. Close the tube and incubate for 10 minutes at room temperature.
4. Briefly vortex the tube and then do a quick spin (less than 5000xg) to concentrate the liquid at the bottom.
5. Store the suspended plasmid at -20°C. The DNA is stable for at least one year from date of shipping when stored at -20°C.

RefSeq: [NM_001136157.2](#)

RefSeq ORF: 1701 bp

Locus ID: 55593

UniProt ID: [Q96G74](#)

Cytogenetics: Xp11.23

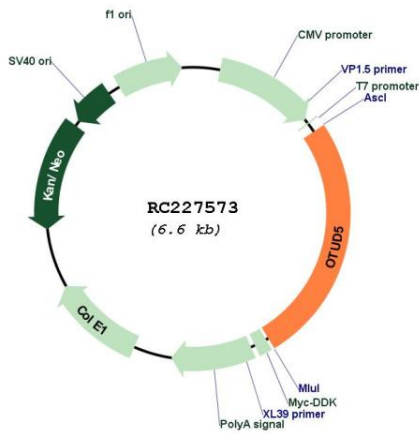
Protein Families: Protease

Protein Pathways: RIG-I-like receptor signaling pathway

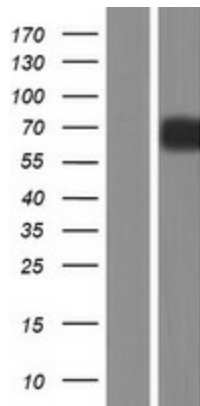
MW: 60 kDa

Gene Summary: This gene encodes a member of the OTU (ovarian tumor) domain-containing cysteine protease superfamily. The OTU domain confers deubiquitinase activity and the encoded protein has been shown to suppress the type I interferon-dependent innate immune response by cleaving the polyubiquitin chain from an essential type I interferon adaptor protein. Cleavage results in disassociation of the adaptor protein from a downstream signaling complex and disruption of the type I interferon signaling cascade. Alternatively spliced transcript variants encoding different isoforms have been described. [provided by RefSeq, Oct 2008]

Product images:



Circular map for RC227573



Western blot validation of overexpression lysate (Cat# [LY427831]) using anti-DDK antibody (Cat# [TA50011-100]). Left: Cell lysates from untransfected HEK293T cells; Right: Cell lysates from HEK293T cells transfected with [RC227589] using transfection reagent MegaTran 2.0 (Cat# [TT210002]).