

Product datasheet for RC227555

Treacher Collins syndrome protein (TCOF1) (NM_001135244) Human Tagged ORF Clone

Product data:

Product Type:	Expression Plasmids
Product Name:	Treacher Collins syndrome protein (TCOF1) (NM_001135244) Human Tagged ORF Clone
Tag:	Myc-DDK
Symbol:	TCOF1
Synonyms:	MFD1; TCS; TCS1; treacle
Vector:	pCMV6-Entry (PS100001)
E. coli Selection:	Kanamycin (25 ug/mL)
Cell Selection:	Neomycin
ORF Nucleotide Sequence:	>RC227555 representing NM_001135244 Red=Cloning site Blue=ORF Green=Tags(s)

TTTTGTAATACGACTCACTATAGGGCGGCCGGAATTCGTCGACTGGATCCGGTACCGAGGAGATCTGCC
GCC**CGATCGCC**

ATGGCCGAGGCCAGGAAGCGGGGAGCTACTTCCCCTGATCTACCACCATCTGCTGCGGGCTGGCTATG
TGGCTGCGGCGCGGAAGTGAAGGAGCAGAGCGGCCAGAAGTGTTCCTGGCTCAGCCCCTAACCCCTTCT
GGACATCTATACACTGGCAACAAACCTCAGAGCTTGGTCGGAAGCGGAAGGCAGAGGAAGATGCGGCA
CTGCAAGCTAAGAAAACCGTGTGTGACACCCATCAGCACCTCGGAGAGCTCGGAAGAGGAGGAAGAAG
CAGAAGCCGAAACCGCCAAAGCCACCCCAAGACTAGCATCTACCAACTCCTCAGTCTGGGGCGGACTT
GCCATCAAGCATGAAAGAAAAAGCCAAGGCAGAGACAGAGAAAGCTGGCAAGACTGGGAATTCATGCCA
CACCCCTGCCACTGGGAAGACGGTGGCAACCTTTTCTGGGAAGTCTCCCAGGAAGTCAGCAGAGCCCT
CAGCAAACTACTACGTTGGTCTCAGAAACTGAGGAGGAGGGCAGCGTCCCGGCTTTGGAGCTGCTGCCAA
GCCTGGGATGGTGTGACGGGCCAGGCCGACAGCTCCAGCGAGGACACCTCCAGCTCCAGTGATGAGACA
GACGTGGAGGGGAAACCCCTCAGTAAAACAGCCAGGTCAAAGCCTCATCAGTTTCTACTAAGGAGTCTC
CAGCAAGAAAGGGCGCCCAAGCCCTGGGAAGGTGGGGATGTGACACCCAGGTCAAAGGAGGGCCCT
GCCCCAGCCAAGAGGGCCAAGAAGCCAGAAGAGGAGTCAAGAGTGTGAGAGGAGGATCTGAAAGTGAG
GAGGAGGCCCTGCAGGGACACGAAGCCAGGTAAGGCCCTCTGAAAAAATTCAGGTCAGAGCTGCCT
CAGCCCCTGCCAAGGGGACCCCTGGGAAAGGGGTACCCAGCACCCCTGGGAAGGCAGGGGCTGTAGC
CTCCCAGACCAAGGCAGGAAGCCAGAGGAGGACTCAGAGAGCAGCAGCGAGGAGTCACTGACAGTGAG
GAGGAGACGCCAGCTGCCAAGGCCCTGCTTCAAGCGAAGGCCCTCAGGAAAAACCTCAGGTGCGAGCTG
CCTCAGCCCCTGCCAAGGAGTCCCCAGGAAAGGAGTCCCCAGCGCCCCTGGGAAGACAGGGCTGC
AGTTGCCAAGGCCAGGGGGGAAGCGGGAGGAGGACTCGCAGAGCAGCAGCGAGGAATCGGACAGTGAG
GAGGAGGCGCTGCTCAGGCGAAGCCTTCAAGGAAAGGCCCCAGGTCAAGAGCCGCTCGGCCCCGCCA
AGGAGTCCCCAGGAAAGGGGCTGCCCCAGCACCTCTAGGAAAAAGGGGCTGCAGCCGCCAGGTCCA
GGTGGGAAGCAGGAGGAGGACTCAAGAAGCAGCAGCGAGGAGTCAAGAGTGCAGAGAGGCACTGGCA
GCCATGAATGCAGCTCAGGTGAAGCCCTTGGGAAAAAGCCCCAGGTGAAACCTGCCTTACCATGGGCA



[View online »](#)

TGGGGCCCTTGGGAAAGGCGCCGGCCAGTGCCACCCGGGAAGGTGGGGCTGCAACCCCTCAGCCCA
 GGTGGGGAAGTGGGAGGAGGACTCAGAGAGCAGTAGTGAGGAGTCATCAGACAGCAGTGATGGAGAGGTG
 CCCACAGCTGTGGCCCCGGCTCAGGAAAAGTCCTTGGGAAACATCCTCCAGGCCAAACCCACCTCCAGTC
 CTGCCAAGGGGCCCTCAGAAGCAGGGCCTGTAGCCGTCCAGGTCAAGGCTGAAAAGCCCATGGACAA
 CTCGGAGAGCAGCAGGAGTCAATCGGACAGTCCGGACAGTGAGGAGGCCACCAGCAGCCATGACTGCAGCT
 CAGGCAAAACAGCTCTGAAAATTCCTCAGACCAAGGCCTGCCAAAGAAAACCAATACCACTGCATCTG
 CCAAGGTCGCCCCGTGTGGAGTGGGCACCCAGCCCGGAAAGCAGGAACTGCGACTTCTCCAGCAGG
 CTCATCCCCAGCTGTGGCTGGGGGCACCCAGAGACCAGCAGAGGATTCTCAAGCAGTGAGGAATCAGAT
 AGTGAGGAAGAGAAGACAGGTCTTGCAAGTAACCGTGGGACAGGCAAAAGTCTGTGGGAAAGGCTCCAGG
 TAAAAGCAGCCTCAGTGCCTGTCAAGGGTCTTGGGGCAAGGGACTGCTCCAGTACTCCCTGGGAAGAC
 GGGGCTACAGTCACCCAGGTGAAAGCTGAAAAGCAGGAAGACTCTGAGAGCAGTGAGGAGGAATCAGAC
 AGTGAGGAAGCAGCTGCATCTCCAGCACAGGTGAAAACCTCAGTAAAGAAAACCCAGGCCAAAGCCAACC
 CAGCTGCCCCAGAGCACCTTCAGCAAAAGGGACAATTCAGCCCCTGAAAAGTTGTACTGCAGCTGC
 TCAAGCCAAGCAGAGTCTCCATCCAAGGTGAAGCCACCAGTGAGAAACCCCAAGACAGTACCGTCTTG
 GCGAGGGGCCAGCATCTGTGCCATCTGTGGGAAAGCCGTGGCTACAGCAGCTCAGGCCAGACAGGGC
 CAGAGGAGGACTCAGGGAGCAGTGAGGAGGAGTACAGCAGTGAGGAGGAGCGGAGACGCTGGCTCAGGT
 GAAGCCTTCAGGGAAGACCCACCAGATCAGAGTGCCTTGGCTCCTGCCAAGGAGTCCCCAGGAAAGGG
 GCTGCCCAACACCTCCTGGGAAGACAGGGCTTCGGCTGCCAGGCAGGGAAGCAGGATGACTCAGGGA
 GCAGCAGCGAGGAATCAGACAGTGATGGGGAGGCACCGGCAGCTGTGACCTCTGCCAGGTGATTAACC
 CCCTCTGATTTTTGTGACCCCTAATCGTAGTCCAGCTGGCCAGCTGCTACACCCGCACAAGCCAGGCT
 GCAAGCACCCCGAGGAAGGCCGAGCCTCGGAGAGCACAGCCAGGAGTCTCCTCCGAGAGCGAGGATG
 AGGACGTGATCCCGCTACACAGTGTGACTCCTGGCATCAGAACCAATGTGGTGACCATGCCACTGCA
 CCACCAAGAATAGCCCCAAAGCCAGCATGGCTGGGGCCAGCAGCAGCAAGGAGTCCAGTCCGATATCA
 GATGGCAAGAAACAGGAGGGACCAAGCCACTCAGGTTGACAGTGCTGTGGGAACACTCCCTGCAACAAGTC
 CCCAGAGCACCTCCGTCCAGGCCAAAGGGACCAACAAGCTCAGAAAACCTAAGCTTCTGAGGTCCAGCA
 GGCCACCAAGGCCCTGAGAGCTCAGATGACAGTGAGGACAGCAGCGACAGTTTTCAGGGAGTGAGGAA
 GATGGTGAAGGGCCCCAGGGGGCAAGTCAGCCACACGCTGGTAGGTCACCCCTCCAGGACAGAGA
 CCCTGGTGGAGGAGACCGCAGCAGTCCAGCGAGGATGATGTGGTGGCGCCATCCAGTCTCTCTCTC
 AGGTTATATGACCCCTGGACTAACCCAGCCAATTCAGGCCTCAAAGCCACTCCAAGCTAGACTCC
 AGCCCCCTCAGTTTCTCTACTCTGGCCGCAAAGATGACCCAGATGGCAAGCAGGAGGCAAAGCCCCAAC
 AGGCAGCAGGCATGTTGTCCCCTAAAACAGGTGAAAAGAGGCTGCTTCAGGCACCACCTCAGAAGTC
 CCGGAAGCCAAAGAAAGGGCTGGGAACCCCAAGCCTCAACCTGGCGCTGCAAAGCAACATCACCCAG
 TGCTCCTGGGCCAACCTGGCCCTGAATGAGGCCAGGTGCAGGCCTCAGTGGTGAAGGTCTGACTG
 AGCTGCTGGAACAGGAAAGAAAGAGGTGGTGGACACCACCAAGGAGAGCAGCAGGAAGGGCTGGGAGAG
 CCGCAAGCGGAAGCTATCGGGAGACCAGCCAGCTGCCAGGACCCCAAGGAGCAAGAAGAAGAAGCTG
 GGGGCCGGGAAGGTGGGGAGGCCTCTGTTTCCCAGAAAAGACCTCCACGACTTCCAAGGGGAAAGCAA
 AGAGAGACAAAGCAAGTGGTGTGTCAGGAGAAGAAAGGGAAGGGGTCTTTGGCTCCCAAGGGGCCAA
 GGACGAGCCAGAAGAGGAGCTTCAGAAGGGATGGGACGGTTGAAGGTGGAGATCAAAGCAACCCAAAG
 AGCAAGAAGGAGAAGAAGAAATCCGACAAGAGAAAAAAGACAAAGAAAAAAGAAAAAGAAGAAGAAAG
 CAAAAAAGGCCTCAACCAAGATTCTGATGCACCGTCCCAGAAGAAAAAAGAAAAAAGAAGAAGACAGC
 AGAGCAGACTGTA

ACGCGTACGCGGCCGCTCGAGCAGAACTCATCTCAGAAGAGGATCTGGCAGCAATGATATCCTGGATT
 ACAAGGATGACGACGATAAGGTTTAA

Protein Sequence: >RC227555 representing NM_001135244
 Red=Cloning site Green=Tags(s)

MAEARKRRELLPLIYHLLRAGYVRAAREVKEQSGQKCFLAQPVTLLDIYTHWQQTSELGRKRKAEDDAA
 LQAKKTRVSDPISTSESEEEEEAEATAKATPRLASTNSSVLGADLPSSMKEKAKAETEKAGKTGNSMP
 HPATGKTVANLLSGKSPRKSAPESANTTLVSETEEEGVPFAFGAAAKPGMVSAGQADSSSEDTSSSSDET
 DVEGKPSVKPAQVKASSVSTKESPARKAAPAPGKVGDVTPQVKGALPPAKRKKPEEESSESEEGSESE
 EEAPAGTRSQVKASEKILQVRAASAPAKGTPGKATPAPPGKAGAVASQTKAGKPEEDSESSSESSDSE
 EETPAAKALLQAKASGKTSQVGAASAPAKE SPRKGAAPAPPKGTGPAVAKAQAGKREEDSQSSSESDSE
 EEAPAQAKPSGKAPQVRAASAPAKE SPRKGAAPAPPRKTGPAAAQVQVKGQEEEDSRSSSESDSDREALA
 AMNAAQVKPLGKSPQVKPASTMGMPLGKGAGPVPPGKVGPAATPSAQVKGWEEDSESSSESSDSDGDEV
 PTAVAPAEKSLGNILQAKPTSSPAKPPPQKAGPVAVQVKAEKPMDNSESESSSDSADSEEPAAAMTAA
 QAKPALKIPQTKACPKTNTTASAKVAPVRVGTQAPRKAGTATSPAGSSPAVAGGTQRPADSSSEESD
 SEEEKTGLAVTVGQAKSVGKGLQVKAASVPVKGSLGQGTAPVLPKGTGPTVTQVKAQKQEDSESESEESD
 SEEAASPAQVKT SVKKTQAKANPAAARAPSAKGTI SAPGKVVTAAAQAKQRSPKVKPPVRNPQNSTVL
 ARGPASVPSVGKAVATAAQATGPEEDSGSSEESDSEEEAETLAQVKPSGKTHQIRAALAPAKE SPRKGA
 AAPTTPGKGTGSAQAQAGKQDDSGSSSESDSDGEAPAAVTSAQVIKPLIFVDPNRPAGPAATPAQAQA
 ASTPRKARASESTARSSSESEDEDVIPATQCLTPGIRTNVVTMPHTAHPRIAPKASMGASSKESRIS
 DGKKQEGPATQVDSAVGTLPATSPQSTSVQAKGTNKLKPKLPEVQATKAPESSDSDSDSSSGSEE
 DGEQPQGA SAHTLVGPTPSRTE TLVEETAESSEDDVAPSQSLLSGYMTPGLTPANSQASKATPKLDS
 SPSVSSTLAAKDDPDGKQEAQKQQAAGMLSPKGGKEAASGTTTPQKSRPKPKGAGNPQASTLALQSNITQ
 CLLGQPWPLNEAQVQASVVKVLTELLEQERKKVVDTTKESRKGWESRKRKLSGDQPAARTPRSKKKKKL
 GAGEGGEASVSPEKTSTTSKGGAKRDKASGDVKEKKKGKSLGSQGAKDEPEEELQKGMGTVEGGDQSNPK
 SKKEKKKSDKRKKDKKKEKKKKAKKASTKDSESPSQKKKKKKKKTAEQTV

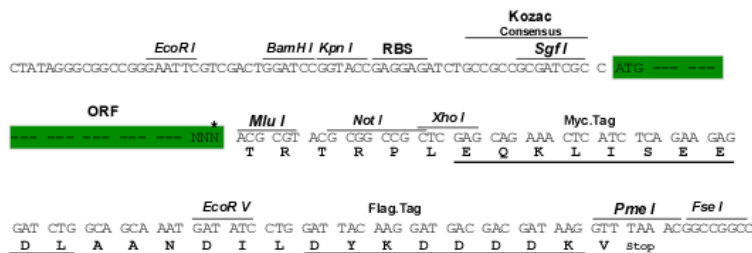
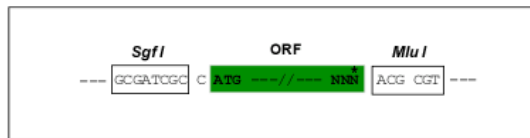
TRTRPLEQKLISEEDLAANDILDYKDDDDKV

Restriction Sites:

Sgfl-MluI

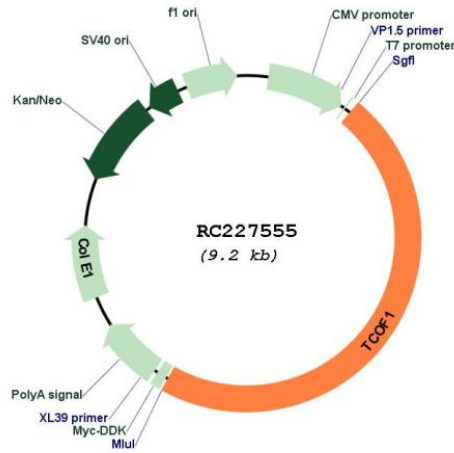
Cloning Scheme:

Cloning sites used for ORF Shuttling:



* The last codon before the Stop codon of the ORF

Plasmid Map:



ACCN: NM_001135244

ORF Size: 4353 bp

OTI Disclaimer: The molecular sequence of this clone aligns with the gene accession number as a point of reference only. However, individual transcript sequences of the same gene can differ through naturally occurring variations (e.g. polymorphisms), each with its own valid existence. This clone is substantially in agreement with the reference, but a complete review of all prevailing variants is recommended prior to use. [More info](#)

OTI Annotation: This clone was engineered to express the complete ORF with an expression tag. Expression varies depending on the nature of the gene.

Components: The ORF clone is ion-exchange column purified and shipped in a 2D barcoded Matrix tube containing 10ug of transfection-ready, dried plasmid DNA (reconstitute with 100 ul of water).

Reconstitution Method:

1. Centrifuge at 5,000xg for 5min.
2. Carefully open the tube and add 100ul of sterile water to dissolve the DNA.
3. Close the tube and incubate for 10 minutes at room temperature.
4. Briefly vortex the tube and then do a quick spin (less than 5000xg) to concentrate the liquid at the bottom.
5. Store the suspended plasmid at -20°C. The DNA is stable for at least one year from date of shipping when stored at -20°C.

RefSeq: [NM_001135244.2](#)

RefSeq ORF: 4356 bp

Locus ID: 6949

UniProt ID: [Q13428](#)

Cytogenetics: 5q32-q33.1

Protein Families: Druggable Genome, Stem cell - Pluripotency

MW: 148.2 kDa

Gene Summary: This gene encodes a nucleolar protein with a LIS1 homology domain. The protein is involved in ribosomal DNA gene transcription through its interaction with upstream binding factor (UBF). Mutations in this gene have been associated with Treacher Collins syndrome, a disorder which includes abnormal craniofacial development. Multiple transcript variants encoding different isoforms have been found for this gene. [provided by RefSeq, Sep 2008]