

Product datasheet for **RC227548**

RAI14 (NM_001145520) Human Tagged ORF Clone

Product data:

Product Type:	Expression Plasmids
Product Name:	RAI14 (NM_001145520) Human Tagged ORF Clone
Tag:	Myc-DDK
Symbol:	RAI14
Synonyms:	NORPEG; RAI13
Mammalian Cell Selection:	Neomycin
Vector:	pCMV6-Entry (PS100001)
E. coli Selection:	Kanamycin (25 ug/mL)



[View online »](#)

ORF Nucleotide Sequence:

>RC227548 ORF sequence
 Red=Cloning site Blue=ORF Green=Tags(s)

TTTTGTAATACGACTCACTATAGGGCGGCCGGAATTCGTCGACTGGATCCGGTACCGAGGAGATCTGCC
 GCC**CGGATCGCC**

ATGAAGAGCTTGAAGCGAAGTTCAGGAAGAGTGACACCAATGAGTGAACAAGAATGATGACCGGCTAC
 TGCAGGCCGTGGAGAATGGAGATGCGGAGAAGGTGGCCTCACTGCTCGGCAAGAAGGGGGCCAGTGCCAC
 CAAACACGACAGTGAGGGCAAGACCGCTTTCCATCTTGCTGCTGCAAAAGGACACGTGGAATGCCTCAGG
 GTCATGATTACACATGGTGTGGATGTGACAGCCCAAGATACTACCGGACACAGCGCCTTACATCTCGCAG
 CCAAGAACAGCCACCATGAATGCATCAGGAAGTGCTTCAGTCTAAATGCCAGCCGAAAGTGTTGACAG
 CTCTGGGAAAACAGCTTTACATTATGCAGCGGCTCAGGGCTGCCTTCAAGCTGTGCAGATTCTCTGCGAA
 CACAAGAGCCCCATAAACCTCAAAGATTTGGATGGGAATATACCGCTGCTGCTTGTGTACAAAATGGTC
 ACAGTGAGATCTGTCACCTTCTCCTGGATCATGGAGCAGATGTCAATCCAGGAACAAAAGTGAAGAAC
 TGCTCTCATGCTGGCCTGTGAGATTGGCAGCTCTAACGCTGTGGAAGCCTTAATTAAGGGTGCAGAC
 CTAACCTTGTAGATTCTTGGATACAATGCCTTACATTATTCCAAACTCTCAGAAAATGCAGGAATTC
 AAAGCCTTCTATTATCAAAAATCTCTCAGGATGCTGATTTAAAGACCCCAACAAAACCAAGCAGCATGA
 CCAAGTCTCTAAAATAAGCTCAGAAAGAAGTGGAACTCCAAAAAACGCAAAGCTCCACCACCTCTATC
 AGTCTACCCAGTTGAGTGATGTCTTCCCAAGATCAATAACTTCGACTCCACTATCGGGAAAGGAAT
 CGGTATTTTTTGTGAACCACCTTCAAGGCTGAGATCAGTCTATACGAGAAAACAAAGACAGACTAAG
 TGACAGTACTACAGGTGCTGATAGCTTATTGGATATAAGTTCTGAAGCTGACCAACAAGATCTTCTCTCT
 CTATTGCAAGCAAAGTTGCTTCCCTTACCTTACACAATAAGGAGTTACAAGATAAATACAGGCCAAAT
 CACCCAAAGGAGGGGAAAGCAGACCTAAGCTTTGACTCATACCATTCCACCCAAACTGACTTGGGCCATC
 CCTGGGAAAACCTGGTGAAACCTCTCCCCAGACTCCAAATCATCTCCATCTGTCTTAATACATTCTTTA
 GGTAAATCCACTACTGACAATGATGTGAGAATTGCAACTGCAAGAGATTTTGAAGATCTACAGAAGA
 GATTAGAGAGCTCTGAAGCAGAGAGAAAACAGCTACAGGTGCAACTCCAATCCCGAAGGGCAGAAGTGGT
 ATGCTTAAACAACACTGAGATTTAGAGAACAGCTCTGACCTCAGCCAGAAAATTAAGAAAACAGAGC
 AAATACGAGGAGGCTATGAAAGAAGTCTTAGTGTGCAAGCAGATGAAACTCGGTCTTGTCTCACCTG
 AAAGCATGGATAATTATCACATTTCCACGAGCTGAGGGTACGGAAGAGGAAAATAATGTGCTAAAGCA
 GGATCTGCAGAAATGCATTAGAAGAAAGTAAAGAAAATAAGAGAAAAGTGAAGAGATTAGAGGAAAACTG
 GTAGAGAGGGAGAAAGGTACAGTGATTAAGCCACCTGTGGAAGAGTACGAGGAAATGAAAAGTTCATATT
 GCTCTGTTATTGAGAATATGAATAAGGAGAAAGCATTGTTGTTGAGAAAATCCAAGAAGCCCAAGAAGA
 AATCATGAAATTAAGACACACTAAAAAGTCAAGTACAGTACACAGGAAGCCAGTGTGAAGCTGAGGACATG
 AAAGAAGCCATGAATAGGATGATAGATGAACTCAATAAACAGGTGAGCGAGCTGTACAGCTGTACAAAAG
 AAGCCCAGGCTGAGCTGGAGGATTACAGGAAGAGGAAAATCTCTAGAGGATGTACAGCTGAATATATCCA
 TAAAGCAGAGCATGAGAAAATGCAATTGACAAACGTGTCCAGGGCTAAAGCAGAAAGTGCAGTGTCT
 GAAATGAAGTCTCAGTATTCAAAAGTGTGAATGAGTTGACCCAGCTCAAACACTGGTGGATGCACAAA
 AAGAGAACTCTGTCTCTATCACAGAACATTTGCAAGTGATAACCACGCTGCGGACTGCAGCAAAAGAGAT
 GGAAGAAAAAATAAGCAATCTTAAGGAACACCTTGAAGCAAGGAAGTGAAGTAGCAAAAGCTGGAGAAA
 CAACTCTTAGAAGAGAAAAGCTGCTATGACTGATGCAATGGTACCTCGGTCTTCTATGAAAACCTCAGT
 CATCCTTAGAGAGTGAAGTGAAGTGTGTTGGCATCGAAAATTAAGGAATCTGTGAAAGAGAAAAGAGAGGT
 CCATTCAGAGGTTGTCCAGATTAGAAGTGAAGTCTCACAGGTGAAAAGAGAAAAGGAAAATATTCAGACT
 CTCTTGAATCCAAAGAGCAAGAAGTAAATGAACTTCTGCAAAAATCCAGCAAGCTCAGGAAGAATTTG
 CAGAAATGAAAAGATACTCTGAGAGCTTCAAACCTGGAGGAAGATAAAGATAAAAAGATAAATGAGAT
 GTCGAAGGAAGTACCAAATTAAGGAGGCCTTGAACAGCCTCTCCAGCTCTCTACTCAACAAGTCA
 TCCAAAAGGCAGAGTCAGCAGCTGGAGGCGCTGCAGCAGCAAGTCAAACAGCTCCAGAACCAGCTGGCGG
 AATGCAAGAAACAACACCAGGAGTTCATATCAGTTTACAGAATGCATCTTCTGTATGCTGTGACGGGCCA
 GATGGATGAAGATGTCCAGAAAGTACTGAAGCAAATCCTTACCATGTGTAAAACCAAGTCTCAAAAAGAA

ACGCGTACGCGGCCGCTCGAGCAGAAACTCATCTCAGAAGAGGATCTGGCAGCAAATGATATCCTGGATT
 ACAAGGATGACGACGATAAGGTTTAA

Protein Sequence: >RC227548 protein sequence
Red=Cloning site Green=Tags(s)

MKSLKAKFRKSDTNEWNKNDRLQLAVENGDAEKVASLLGKKGASATKHDSEGKTAFLHAAAKGHVECLR
 VMITHGVDVTAQDTTGHSAHLAAKNSHHECIRKLLQSKCPAESVDSSGKTALHYAAAQGCQLQAVQILCE
 HKSPINLKDLDGNIPLLLAVQNGHSEICHFLLDHGADVNSRNKSGRTALMLACEIGSSNAVEALIKKGAD
 LNLVDSLGYNALHYSKLESENAGIQSLLLSKISQDADLKTPTKPKQHDQVSKISSERSGTPKKRKAPPPPI
 SPTQLSDVSSPRISITSTPLSGKESVFFAEPFFKAEISSIRENKDRLSDSTTGADSLLDISSEADQQDLLS
 LLQAKVASLTLHNKELQDKLQAKSPKEAEADLSFDSYHSTQTDLGPSTLGPGETSPDSSKSSPSVLIHSL
 GKSTTDNDVRIQQLEILQDLQKRLESSEAERKQLQVELQSRRAELVCLNNTIESENSDLSQKLKETQS
 KYEEAMKEVLSVQKQMKLGLVSPESMDNYSHFELRVTEEEINVLKQDLQNALEESERNKEKVRLEEKL
 VEREKGTVIKPPVEEYEEMKSSYCSVIENMNKEKAFLEKYQEAQEEIMKLDLTKSQMTQEASDEAEDM
 KEAMNRMIDELNKQVSELSQLYKEAQAELEDYRKRKSLDVDTAEYIHKAEHEKLMQLTNVSRKAEDALS
 EMKSQYSKVLNELLTQLKQLVDAQKENSVSITEHLQVITTLRTAAKEMEEKISNLKEHLASKEVEVAKLEK
 QLLEEKAAMTDAMPVRSSEKLSQSSLESESVLASKLKEVKEKEKVHSEVVQIRSEVSVQKREKENIQT
 LLKSKEQEVNELLQKFQQAQEELEAMKRYSESSSKLEEDKDKKINEMSKVTKLKEALNSLSQLSYSTSS
 SKRQSQLEALQQQVQLQNLAECKQHQEIVSYRMLLLYAVQGMDEDVQKVLKQILTMCKNQSQKK

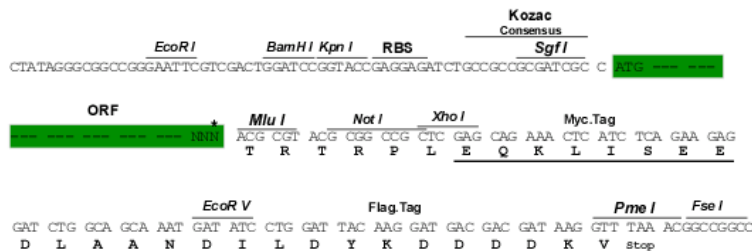
TRTRPLEQKLISEEDLAANDILDYKDDDDKV

Chromatograms: https://cdn.origene.com/chromatograms/mk6155_h01.zip

Restriction Sites: SgfI-MluI

Cloning Scheme:

Cloning sites used for ORF Shuttling:



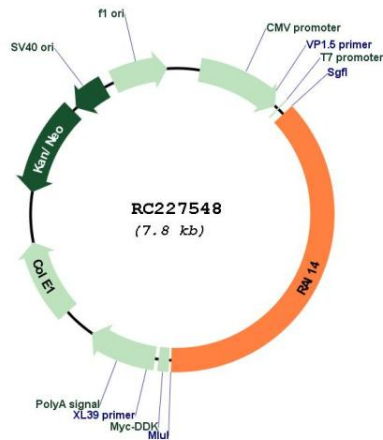
* The last codon before the Stop codon of the ORF

ACCN: NM_001145520

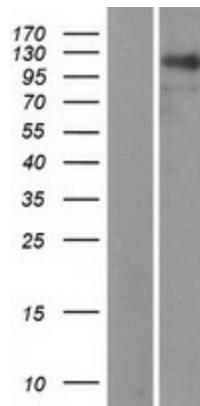
ORF Size: 2940 bp

OTI Disclaimer:	The molecular sequence of this clone aligns with the gene accession number as a point of reference only. However, individual transcript sequences of the same gene can differ through naturally occurring variations (e.g. polymorphisms), each with its own valid existence. This clone is substantially in agreement with the reference, but a complete review of all prevailing variants is recommended prior to use. More info
OTI Annotation:	This clone was engineered to express the complete ORF with an expression tag. Expression varies depending on the nature of the gene.
Components:	The ORF clone is ion-exchange column purified and shipped in a 2D barcoded Matrix tube containing 10ug of transfection-ready, dried plasmid DNA (reconstitute with 100 ul of water).
Reconstitution Method:	<ol style="list-style-type: none">1. Centrifuge at 5,000xg for 5min.2. Carefully open the tube and add 100ul of sterile water to dissolve the DNA.3. Close the tube and incubate for 10 minutes at room temperature.4. Briefly vortex the tube and then do a quick spin (less than 5000xg) to concentrate the liquid at the bottom.5. Store the suspended plasmid at -20°C. The DNA is stable for at least one year from date of shipping when stored at -20°C.
RefSeq:	NM_001145520.1 , NP_001138992.1
RefSeq Size:	5068 bp
RefSeq ORF:	2943 bp
Locus ID:	26064
UniProt ID:	Q9P0K7
Cytogenetics:	5p13.2
MW:	110.1 kDa
Gene Summary:	Plays a role in actin regulation at the ectoplasmic specialization, a type of cell junction specific to testis. Important for establishment of sperm polarity and normal spermatid adhesion. May also promote integrity of Sertoli cell tight junctions at the blood-testis barrier. [UniProtKB/Swiss-Prot Function]

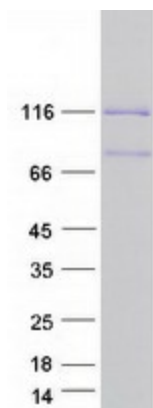
Product images:



Circular map for RC227548



Western blot validation of overexpression lysate (Cat# [LY428922]) using anti-DDK antibody (Cat# [TA50011-100]). Left: Cell lysates from untransfected HEK293T cells; Right: Cell lysates from HEK293T cells transfected with [RC227564] using transfection reagent MegaTran 2.0 (Cat# [TT210002]).



Coomassie blue staining of purified RAI14 protein (Cat# [TP327548]). The protein was produced from HEK293T cells transfected with RAI14 cDNA clone (Cat# RC227548) using MegaTran 2.0 (Cat# [TT210002]).