

Product datasheet for **RC227542**

WDR47 (NM_001142550) Human Tagged ORF Clone

Product data:

Product Type:	Expression Plasmids
Product Name:	WDR47 (NM_001142550) Human Tagged ORF Clone
Tag:	Myc-DDK
Symbol:	WDR47
Mammalian Cell Selection:	Neomycin
Vector:	pCMV6-Entry (PS100001)
E. coli Selection:	Kanamycin (25 ug/mL)



[View online »](#)

ORF Nucleotide Sequence:

>RC227542 representing NM_001142550
 Red=Cloning site Blue=ORF Green=Tags(s)

TTTTGTAATACGACTCACTATAGGGCGGCCGGAATTCGTCGACTGGATCCGGTACCGAGGAGATCTGCC
 GCC**CGCATCGCC**

ATGACGGCTGAAGAAACAGTGAATGTA AAAAGAGTTGAAATCATTAAAGCTAATTTTGGACTTCTGAATT
 CAAAGAAGCTTCACATTAGTATGCTGGCCCTGGAGAAGGAAAGTGGAGTCATAAAATGGCCTGTTTTCAGA
 TGATATGCTTTTCTGAGGCAGCTAATACTTGATGGTCAATGGGATGAAGTTCTTCAGTTCATTCAGCCT
 CTAGAATGTATGGAAAAATTTGACAAAAAAGTTTCGTTATATTATCCTGAAGCAGAAGTTTTTAGAAG
 CTTTATGTGTTAAACAACGCGATGTCAGCAGAAGATGAGCCCCAGCATGTAAGATTTTTTTCCTGAAGCT
 GGAATTTACCATGCAAGAAGCTGTGCAATGTTTACATGCTCTAGAAGAATACTGTCCTTCTAAAGATGAC
 TATAGTAAAGCTCTGTTTGCTTTTGACTTTGCCTCGTCTGACCAATCATGCCGAGTTTAAAGACTGGAATC
 CCAGCACCGCAGAGTTCAGTGTGTTGAGAGGCTTGTGTCATGGTTGCAGAATTCATCCCTGCTGATAG
 GAAGCTAAGTGAAGCTGGTTTTAAGCTAGTAAACATCGTTTATTTTCAGCTTGAATGAAAGGCCTGCTT
 TATGAATGCTGTGTAGAATTTTGTGAGAGTAAAGCAACTGGAGAAGAAATACAGAAAGCGAAGTGCCTC
 TTGGCATCGACCTCTTATGTGGTAAATGGTTGTGATGATTTGGATCTGAGTTTACTGTCATGGCTTCAGAA
 TCTTCCATCTTCTGTCTTCTTGTGCTTTTGAACAGAAAATGCTTAATATTTCATGTTGACAAAATCTG
 AAACCTACAAAAGCTGCATATGCTGATCTTTTGACTCCTCTTATCAGCAAATCTCTCCCTATCCATCAT
 CCCCAATGAGAAGACCTCAATCAGCTGATGCCTATATGACCCGCTCTCTGAATCTGTCTTAGATGGCCT
 CACCTGTGGACTAACCAGTCATGATAAGAGAATTTAGACCTTGGAAACAAAATCTCCAATGTCACAC
 TCCTTTGCTAACTTCCATTATCCAGGGGTACAAAACCTCAGTAGAAGTCTCATGCTTGAAGTACAGAAT
 GTCACAGTATTTACGAAGAATCCCCTGAGCGAAGTGATACACCTGTTGATGCACAGAGGCTTACGGCAG
 TGAATCTTGGGCCAGAGTTCAGTTTTCAGAAAAAGAGCCTGCAAAATGGAGCACAGAATCCAGGACAGCT
 AAACAAGAAAAAATGAGCTTCGAGATTCAACAGAACAATTTCAAGAATATTATAGGCAAAGATTACGCT
 ATCAACAGCATTAGAACAAGAGGAGCAACAGCGGCAGATATACCAACAGATGTTGCTTGAAGGAGGCGT
 GAATCAGGAGGATGGTCTGATCAGCAGCAGAATCTTACTGAACAGTTCCCTTAATAGGTCCATTCAAAG
 CTTGGTGAATTAATATTGGAATGGATGGCCTTGGTAATGAGGTATCAGCACTCAACCAGCAATGTAATG
 GGAGCAAAGGCAATGGATCTAATGGTCTTCTGTGACTAGTTTTACTACACCACCCCAAGACTCTAGTCA
 GAGATTAACACATGATGCTTCAAATATTCATAAAGCACTCCTCGTAATCCTGGATCAACAAATCACATA
 CCTTTTCTGGAGGAATCACCTTGTGGAAGCCAAATCTCTTCAGAACATTCGGTCATTAAGCCACCTCTTG
 GAGATTCTCCAGGGAGTCTTTCAAGGTGCAAAAGGGGAAGAGGATGACAAATCAAAAAAGCAGTTTGTGTTG
 TATTAATATCCTAGAAGACACACAAGCTGTTAGAGCAGTGGCTTTTCATCCAGCTGGAGGTTTATATGCT
 GTTGGTTCAAATTCAAAACTCTGAGAGTATGTGCCTATCCAGATGTAATTGATCCAAGTGCACATGAGA
 CTCCTAAGCAGCCGGTGGTACGTTTTAAAAGGAATAAACATCATAAAGGATCCATTTACTGTGTGGCCTG
 GAGTCTTGTGGGCAGTATTAGCAACAGGATCAAATGACAAATACGTCAAAGTGTGCCCTTCAATGCA
 GAGACTTGTAAACGAACAGGACAGATCTGGAATTTAGTATGCATGATGGAACAATTAGAGACTTGGCAT
 TTATGGAAGGCCAGAAAGCGGAGGAGCTATTTAATAAGTGTGGAGCAGGGGATTGTAACATTTATAC
 AACCGATTGTCAAAGAGGACAGGGCCTCCATGCTTTGAGTGGACATACTGGGCATATTTTAGCATTAT
 ACCTGGAGTGGCTGGATGATTGCATCTGGTTCCCAAGATAAGACTGTTAGATTTTGGGATCTTCGAGTAC
 CAAGTTGTGTTCTGTTGTTGGCACAACATTTTCATGGAAGTGGCAGTGCAGTGGCATCTGTAGCTGTAGA
 TCCAGTGGTCTCTTCTAGCCACAGGTCAAGAAGATTCTAGCTGCATGTTGTATGACATAAGAGGAGGA
 AGAATGGTACAAAGTTATCATCCTCATTCCAGTGTGTTGCTGCTGTTTCGATTCTCCCCTGGAGCTCACT
 ACTTGCTAACAGGCTCTTATGATATGAAAATAAAGGTGACAGACCTACAAGGGGACCTCACCAAGCAGCT
 TCCTATCATGGTGGTGGGGAGCACAAGGACAAAGTATTGATGCAGATGGCACACCCAGGATCTTTCC
 TTCTGTCATCCTCTGCAGATAGAAGTGCACCCTCTGGACTTACAATGGG

ACGCGTACGCGGCCGCTCGAGCAGAAACTCATCTCAGAAGAGGATCTGGCAGCAAATGATATCCTGGATT
 ACAAGGATGACGACGATAAAGTTTAA

Protein Sequence: >RC227542 representing NM_001142550
 Red=Cloning site Green=Tags(s)

MTAETVNVKEVEI I K L I L D F L N S K K L H I S M L A L E K E S G V I N G L F S D D M L F L R Q L I L D G Q W D E V L Q F I Q P
 L E C M E K F D K K R F R Y I I L K Q K F L E A L C V N N A M S A E D E P Q H V R F L F L K L E F T M Q E A V Q C L H A L E E Y C P S K D D
 Y S K L C L L L T L P R L T N H A E F K D W N P S T A R V H C F E E A C V M V A E F I P A D R K L S E A G F K A S N N R L F Q L V M K G L L
 Y E C C V E F C Q S K A T G E E I T E S E V L L G I D L L C G N G C D D L D L S L L S W L Q N L P S S V F S C A F E Q K M L N I H V D K L L
 K P T K A A Y A D L L T P L I S K L S P Y P S P M R R P Q S A D A Y M T R S L N P A L D G L T C G L T S H D K R I S D L G N K T S P M S H
 S F A N F H Y P G V Q N L S R S L M L E N T E C H S I Y E E S P E R S D T P V D A Q R P I G S E I L G Q S S V S E K E P A N G A Q N P G P A
 K Q E K N E L R D S T E Q F Q E Y Y R Q R L R Y Q Q H L E Q K E Q Q R Q I Y Q Q M L L E G G V N Q E D G P D Q Q N L T E Q F L N R S I Q K
 L G E L N I G M D G L G N E V S A L N Q Q C N G S K G N G S N G S S V T S F T P P Q D S S Q R L T H D A S N I H T S T P R N P G S T N H I
 P F L E E S P C G S Q I S S E H S V I K P P L G D S P G S L S R S K G E E D D K S K K Q F V C I N I L E D T Q A V R A V A F H P A G G L Y A
 V G S N S K T L R V C A Y P D V I D P S A H E T P K Q P V V R F K R N K H H K G S I Y C V A W S P C G Q L L A T G S N D K Y V K V L P F N A
 E T C N A T G P D L E F S M H D G T I R D L A F M E G P E S G G A I L I S A G A G D C N I Y T T D C Q R G Q L H A L S G H T G H I L A L Y
 T W S G W M I A S G S Q D K T V R F W D L R V P S C V R V V G T T F H G T G S A V A S V A V D P S G R L L A T G Q E D S S C M L Y D I R G G
 R M V Q S Y H P H S S D V R S V R F S P G A H Y L L T G S Y D M K I K V T D L Q G D L T K Q L P I M V V G E H K D K V I Q C R W H T Q D L S
 F L S S A D R T V T L W T Y N G

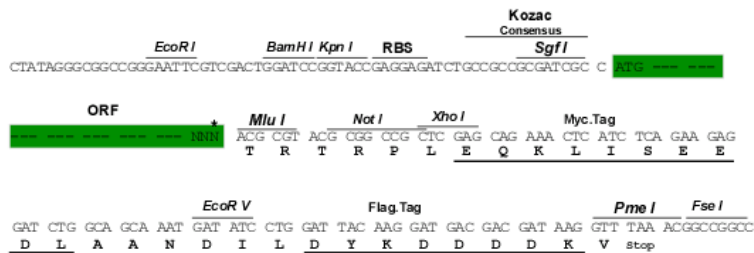
TRTRPLEQKLISEEDLAANDILDYKDDDDKV

Chromatograms: https://cdn.origene.com/chromatograms/mk8037_g06.zip

Restriction Sites: SgfI-MluI

Cloning Scheme:

Cloning sites used for ORF Shuttling:

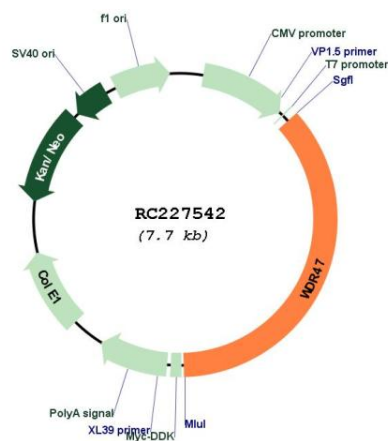


* The last codon before the Stop codon of the ORF

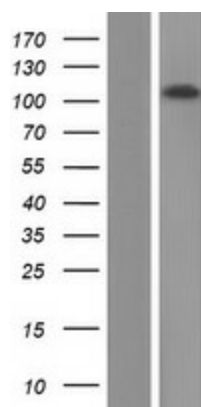
ACCN: NM_001142550

ORF Size:	2781 bp
OTI Disclaimer:	The molecular sequence of this clone aligns with the gene accession number as a point of reference only. However, individual transcript sequences of the same gene can differ through naturally occurring variations (e.g. polymorphisms), each with its own valid existence. This clone is substantially in agreement with the reference, but a complete review of all prevailing variants is recommended prior to use. More info
OTI Annotation:	This clone was engineered to express the complete ORF with an expression tag. Expression varies depending on the nature of the gene.
Components:	The ORF clone is ion-exchange column purified and shipped in a 2D barcoded Matrix tube containing 10ug of transfection-ready, dried plasmid DNA (reconstitute with 100 ul of water).
Reconstitution Method:	<ol style="list-style-type: none"> 1. Centrifuge at 5,000xg for 5min. 2. Carefully open the tube and add 100ul of sterile water to dissolve the DNA. 3. Close the tube and incubate for 10 minutes at room temperature. 4. Briefly vortex the tube and then do a quick spin (less than 5000xg) to concentrate the liquid at the bottom. 5. Store the suspended plasmid at -20°C. The DNA is stable for at least one year from date of shipping when stored at -20°C.
RefSeq:	NM_001142550.1 , NP_001136022.1
RefSeq ORF:	2784 bp
Locus ID:	22911
UniProt ID:	O94967
Cytogenetics:	1p13.3
MW:	102.8 kDa

Product images:



Circular map for RC227542



Western blot validation of overexpression lysate (Cat# [LY428168]) using anti-DDK antibody (Cat# [TA50011-100]). Left: Cell lysates from untransfected HEK293T cells; Right: Cell lysates from HEK293T cells transfected with RC227542 using transfection reagent MegaTran 2.0 (Cat# [TT210002]).