

Product datasheet for **RC227539**

FOXI3 (NM_001135649) Human Tagged ORF Clone

Product data:

Product Type: Expression Plasmids
 Product Name: FOXI3 (NM_001135649) Human Tagged ORF Clone
 Tag: Myc-DDK
 Symbol: FOXI3
 Mammalian Cell Selection: Neomycin
 Vector: pCMV6-Entry (PS100001)
 E. coli Selection: Kanamycin (25 ug/mL)
 ORF Nucleotide Sequence: >RC227539 representing NM_001135649
 Red=Cloning site Blue=ORF Green=Tags(s)

TTTTGTAATACGACTCACTATAGGGCGGCCGGGAATTCGTCGACTGGATCCGGTACCGAGGAGATCTGCC
 GCC**CGATCGCC**

ATGGCCCTCTACTGCGGCGACAACCTTCGGAGTGTATTCGAGCCCGGCTGCCCCGCCCCGCCACCG
 CCGCCGCCCCGGGCGCCCCCGGCAGCCAGGGCGCCTTACGGGTGGCCGACTACGCCGCGCCGCCGGC
 CGCCGCGCCAACCCCTACCTGTGGCTCAACGGGCCCGGCGTGGGAGGCCCGCCCTCCGCCGCGCCGCA
 GCCGCCCGCGTACCTGGGCGCTCCGCCGCGCCGCCGCCCGGGGCGCGGCCCGGCCCTTTCTGC
 AGCCACCGCTGCCCGGCACCTTCGGTGTCTCAGCGGCCCTTCGCGAGCCCGCCCGCCGCGCC
 CGCCTCGCCCGCCGCGCCCGGGGCGCCGGGAGCTGGGCTGGCTGTCCATGGCCAGCCGCGAGGACCTG
 ATGAAGATGGTGCGGCCGCCCTACTCGTATTCGGCGCTCATCGCCATGGCCATTAGAGCGCGCCGAGC
 GCAAACCTCACTCTCAGCCACATCTACCAGTTCTCGCCGATAGCTTCCCCTTCTACCAGCGCAGCAAGGC
 CGGCTGGCAGAATCCATCCGCCACAACCTGTCGCTCAACGACTGCTTCAAGAAGGTGCCCGCGACGAG
 GACGACCCAGGAAAGGTAATTATTGGACTCTTGATCCGAACGCGAGAAAATGTTTGACAATGGGAAT
 TCCGTGGAAGCGAAAGCGCCGCTGAGGCCAGCAATGGCTCCACAGTGGCTGCTGGGACATCAAAGTC
 CGAAGAAGGGCTCTCCTCAGGATTGGGGTCTGGAGTGGTGGGAAGCCAGAAGAAGAGAGCCCTCCACT
 CTGCTGAGGCCTTCCACTCCCCAGAGCCTCCGGAGGGCACCAAGAGTACTGCCTCATCTCTGGAGGAC
 CCATGCTCACCTCACCCCTTGTCTCAACACTTTCTTTCAGCAGCCTCAGCTCCTTGGTGTGAGCAGCAG
 TGTGAGTACCCAGCGGGCTCTCCCTGGCAGCCGCCACCTAGGGATCCAGGGGGCCAGCTGCCCTCCAGC
 GGCGTGTCTCCCCGACCTCCATCTCAGAGGCCTCAGCAGACACCTTGCAACTGAGCAATAGCACCAGCA
 ATAGCACCAGGAGATCTTCTATTACAGCCCTTTCCCTGCCAGCACCAGCGGGGGCAAAGCAGCCC
 TTTCAGCAGCCCTTCCACAACCTTAGCATGGTGAACAGCCTCATCTACCCCGAGAGGGCTCCGAGGTG

ACGCGTACGCGGGCGCTCGAGCAGAAAACCTCATCTCAGAAGAGGATCTGGCAGCAAATGATATCTGGATT
 ACAAGGATGACGACGATAAGGTTTAA



[View online »](#)

Protein Sequence: >RC227539 representing NM_001135649
Red=Cloning site Green=Tags(s)

MALYCGDNFVVSQPGLPPPAATAAPGAPPAARAPYGLADYAAPAAAAANPYLWLNPGVGGPPSAAAA
 AAAAYLGAPPPPPPPGAAAGPFLQPPPAAGTFGCSQRPFAPAPAAPASPAAPAGPGELGWLSMASREDL
 MKMVRPPYSYALIAMAIQSAPERKLTLSHIYQFVADSFPHYQRSKAGWQNSIRHNLSLNDCFKKVPRDE
 DDPGKGNWTLDPNCEKMFNDNGNFRKRKRSEASNGSTVAAGTSKSEEGLSSGLGSGVGGKPEEESPST
 LLRPSHSPEPPEGTASTASSPGGMLTSTPCLNTFFSSLSLSSVSSVSTQRALPGSRHLGIQGAQLPSS
 GVFSPTSISEASADTLQLSNSTSNSTGQRSSYSPFPASTSGGQSSPFPFHNFMSVNSLIYPREGSEV

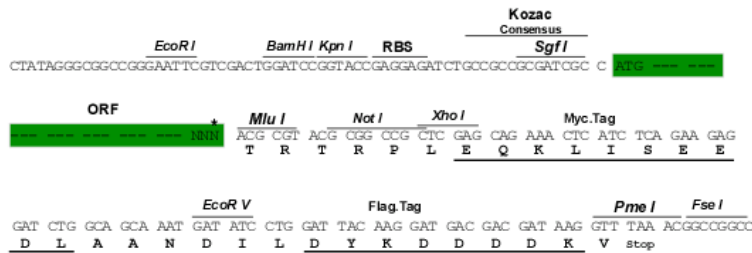
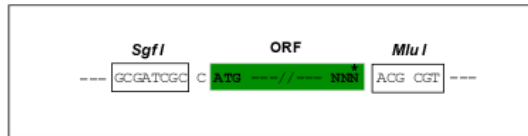
TRTRPLEQKLISEEDLAANDILDYKDDDDKV

Chromatograms: https://cdn.origene.com/chromatograms/mg3561_a01.zip

Restriction Sites: SgfI-MluI

Cloning Scheme:

Cloning sites used for ORF Shuttling:



* The last codon before the Stop codon of the ORF

ACCN: NM_001135649

ORF Size: 1260 bp

OTI Disclaimer: The molecular sequence of this clone aligns with the gene accession number as a point of reference only. However, individual transcript sequences of the same gene can differ through naturally occurring variations (e.g. polymorphisms), each with its own valid existence. This clone is substantially in agreement with the reference, but a complete review of all prevailing variants is recommended prior to use. [More info](#)

OTI Annotation: This clone was engineered to express the complete ORF with an expression tag. Expression varies depending on the nature of the gene.

Components: The ORF clone is ion-exchange column purified and shipped in a 2D barcoded Matrix tube containing 10ug of transfection-ready, dried plasmid DNA (reconstitute with 100 ul of water).

Reconstitution Method:

1. Centrifuge at 5,000xg for 5min.
2. Carefully open the tube and add 100ul of sterile water to dissolve the DNA.
3. Close the tube and incubate for 10 minutes at room temperature.
4. Briefly vortex the tube and then do a quick spin (less than 5000xg) to concentrate the liquid at the bottom.
5. Store the suspended plasmid at -20°C. The DNA is stable for at least one year from date of shipping when stored at -20°C.

RefSeq: [NM_001135649.3](#)

RefSeq ORF: 1263 bp

Locus ID: 344167

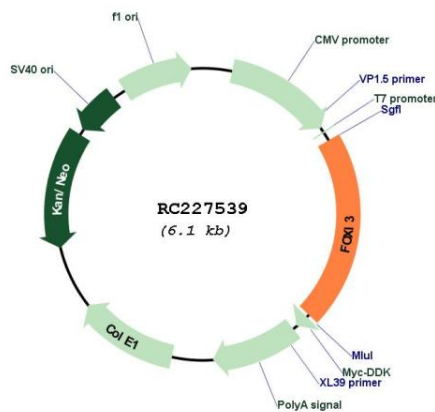
UniProt ID: [A8MTJ6](#)

Cytogenetics: 2p11.2

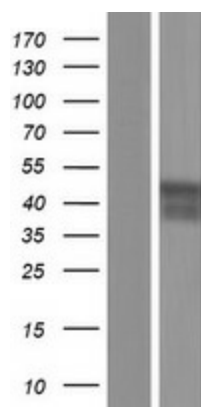
MW: 43.1 kDa

Gene Summary: Possible transcriptional factor.[UniProtKB/Swiss-Prot Function]

Product images:



Circular map for RC227539



Western blot validation of overexpression lysate (Cat# [LY427648]) using anti-DDK antibody (Cat# [TA50011-100]). Left: Cell lysates from untransfected HEK293T cells; Right: Cell lysates from HEK293T cells transfected with RC227539 using transfection reagent MegaTran 2.0 (Cat# [TT210002]).