

## Product datasheet for **RC227535**

### OSR2 (NM\_001142462) Human Tagged ORF Clone

#### Product data:

Product Type:	Expression Plasmids
Product Name:	OSR2 (NM_001142462) Human Tagged ORF Clone
Tag:	Myc-DDK
Symbol:	OSR2
Mammalian Cell Selection:	Neomycin
Vector:	pCMV6-Entry (PS100001)
E. coli Selection:	Kanamycin (25 ug/mL)
ORF Nucleotide Sequence:	>RC227535 representing NM_001142462 Red=Cloning site Blue=ORF Green=Tags(s)

TTTTGTAATACGACTCACTATAGGGCGGCCGGAATTCGTCGACTGGATCCGGTACCGAGGAGATCTGCC  
GCC**CGATCGCC**

ATGGGGAGCAAGGCTCTGCCAGCGCCCATCCCGCTCCACCCGTCGCTGCAGCTCACCAATTA  
TCTCCTTCC  
TGCAGGCCGTGAACACCTTCCCGCCACGGTGGACCACCTGCAGGGCCTGTACGGTCTCAGCGCGGTACA  
GACCATGCACATGAACCACTGGACGCTGGGGTATCCCAATGTGCACGAGATCACCCGCTCCACCATCAGC  
GAGATGGCGCGCGCAGGGCCTCGTGGACGCGCGCTTCCCTTCCCGGCCCTGCCTTTTACCACCACCC  
TATTCCACCCCAAGCAGGGGGCCATTGCCACGTCCTCCAGCCCTGCACAAGGACCGGGCCCGTTTGA  
CTTTGCCAATTTGGCGGTGGCTGCCACGCAAGAGGATCCGCCTAAGATGGGAGACCTGAGCAAGCTGAGC  
CCAGGACTGGGTAGCCCATCTCGGGCCTCAGTAAATTGACTCCGGACAGAAAGCCCTCTCGAGGAAGGT  
TGCCCTCCAAAACGAAAAAGAGTTTATCTGCAAGTTTTCGCGCAGACACTTTACCAATCCTACAATTT  
GCTCATCCATGAGAGGACCCACACGGACGAGAGGCCGTACACGTGTGACATCTGCCACAAGGCCCTCCGG  
AGGCAAGATCACCTGCGGGATCAGATACATCCATTCCAAAGAAAAACCCTTCAAATGTCAGGAGTGTG  
GGAAAGGATTTTGTGCTAGTCTAGAACTCTAGCAGTTCACAAACTTTACACATGCAGGAATCTCCACAAA  
ATGTCCCACATGTGGAAGAACCCTTAATCAGAGAAGTAATCTGAAAACCTCACCTTCTACCCATACAGAC  
ATCAAGCCCTACAGCTGCGAGCAGTGGCGCAAAGTGTTTAGGCGAAAAGTGTGATCTGCGCGGCACAGCC  
TGACTCACACCCCGCGCAGGACTTC

**ACGCGT**ACGCGGCCGCTCGAGCAGAAACTCATCTCAGAAGAGGATCTGGCAGCAAATGATATCCTGGATT  
ACAAGGATGACGACGATAAGGTTTAA



[View online »](#)

**Protein Sequence:** >RC227535 representing NM\_001142462  
Red=Cloning site Green=Tags(s)

MGSKALPAPIPLHPSLQLTNYSFLQAVNTFPATVDHLQGLYGLSAVQTMHMNHWTLGYPNVHEITRSTIT  
 EMAAAQGLVDARFPFPALPFTTHLFHPKQGAIAHVLPALHKDRPRDFANLAVAATQEDPPKMGDLSKLS  
 PGLGSPISGLSKLTPDRKPSRGRLPSTKKEFICKFCGRHFTKSYNLLIHERHTDERPYTCDICHKAFR  
 RQDHLRDHRYIHSKEKPFKQCQCGKGFCSRTLAVHKTLMHMQESPHKCPCTGRTFNQSRNLKTHLLTHTD  
 IKPYSCEQCCKVFRNRCDLRRHSLTHTPRQDF

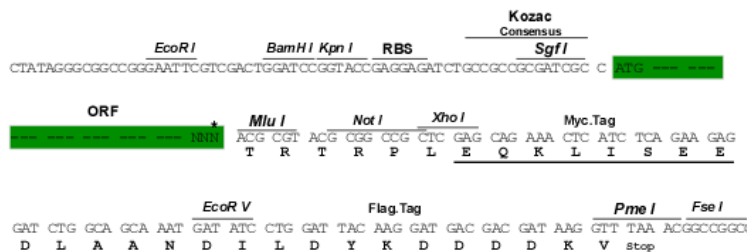
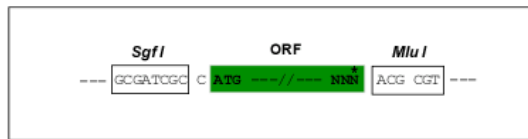
TRTRPLEQKLISEEDLAANDILDYKDDDDKV

**Chromatograms:** [https://cdn.origene.com/chromatograms/mk8037\\_g07.zip](https://cdn.origene.com/chromatograms/mk8037_g07.zip)

**Restriction Sites:** SgfI-MluI

**Cloning Scheme:**

Cloning sites used for ORF Shuttling:



\* The last codon before the Stop codon of the ORF

**ACCN:** NM\_001142462

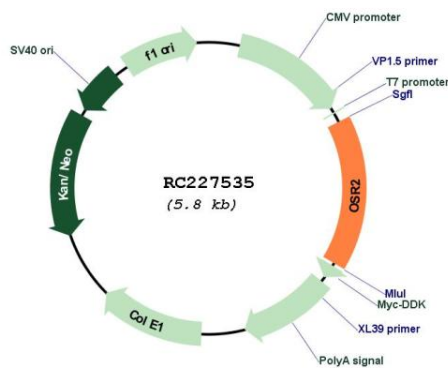
**ORF Size:** 936 bp

**OTI Disclaimer:** Due to the inherent nature of this plasmid, standard methods to replicate additional amounts of DNA in E. coli are highly likely to result in mutations and/or rearrangements. Therefore, OriGene does not guarantee the capability to replicate this plasmid DNA. Additional amounts of DNA can be purchased from OriGene with batch-specific, full-sequence verification at a reduced cost. Please contact our customer care team at [custsupport@origene.com](mailto:custsupport@origene.com) or by calling 301.340.3188 option 3 for pricing and delivery.

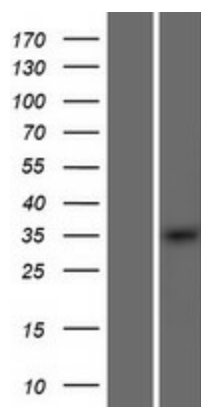
The molecular sequence of this clone aligns with the gene accession number as a point of reference only. However, individual transcript sequences of the same gene can differ through naturally occurring variations (e.g. polymorphisms), each with its own valid existence. This clone is substantially in agreement with the reference, but a complete review of all prevailing variants is recommended prior to use. [More info](#)

<b>OTI Annotation:</b>	This clone was engineered to express the complete ORF with an expression tag. Expression varies depending on the nature of the gene.
<b>Components:</b>	The ORF clone is ion-exchange column purified and shipped in a 2D barcoded Matrix tube containing 10ug of transfection-ready, dried plasmid DNA (reconstitute with 100 ul of water).
<b>Reconstitution Method:</b>	<ol style="list-style-type: none"><li>1. Centrifuge at 5,000xg for 5min.</li><li>2. Carefully open the tube and add 100ul of sterile water to dissolve the DNA.</li><li>3. Close the tube and incubate for 10 minutes at room temperature.</li><li>4. Briefly vortex the tube and then do a quick spin (less than 5000xg) to concentrate the liquid at the bottom.</li><li>5. Store the suspended plasmid at -20°C. The DNA is stable for at least one year from date of shipping when stored at -20°C.</li></ol>
<b>RefSeq:</b>	<a href="#">NM_001142462.3</a>
<b>RefSeq ORF:</b>	939 bp
<b>Locus ID:</b>	116039
<b>UniProt ID:</b>	<a href="#">Q8N2R0</a>
<b>Cytogenetics:</b>	8q22.2
<b>MW:</b>	35.3 kDa
<b>Gene Summary:</b>	OSR2 is a mammalian homolog of the Drosophila odd-skipped family of transcription factors (Lan et al., 2004 [PubMed 15175245]).[supplied by OMIM, Mar 2008]

### Product images:



Circular map for RC227535



Western blot validation of overexpression lysate (Cat# [LY428108]) using anti-DDK antibody (Cat# [TA50011-100]). Left: Cell lysates from untransfected HEK293T cells; Right: Cell lysates from HEK293T cells transfected with RC227535 using transfection reagent MegaTran 2.0 (Cat# [TT210002]).