

## Product datasheet for **RC227529**

### **SHISA9 (NM\_001145204) Human Tagged ORF Clone**

#### **Product data:**

Product Type:	Expression Plasmids
Product Name:	SHISA9 (NM_001145204) Human Tagged ORF Clone
Tag:	Myc-DDK
Symbol:	SHISA9
Synonyms:	CKAMP44
Mammalian Cell Selection:	Neomycin
Vector:	pCMV6-Entry (PS100001)
E. coli Selection:	Kanamycin (25 ug/mL)



[View online »](#)

**ORF Nucleotide Sequence:**

>RC227529 representing NM\_001145204  
 Red=Cloning site Blue=ORF Green=Tags(s)

TTTTGTAATACGACTCACTATAGGGCGGCCGGAATTCGTCGACTGGATCCGGTACCGAGGAGATCTGCC  
 GCC**GCGATCGCC**

ATGCGCCGCGTCCTTCGGCTGCTCCTCGGTTGCTCCTCACCGAGCTGTGCGCCCGGTGTGCCGGGCGC  
 AGGAGCGAGCGGGACACGGGCAGCTGGCGCAACTGGGCGGCGTGTGCTGCTGGCGGGGGCAACCGCTC  
 CGGGGCCGCTCCGGAGAGGCCAGCGAGGGCGCTGAGGCATCGGACGCGCCCCGACCCGGGCGCCACG  
 CCGGACTTCTGCCGGGGTACTTCGATGTCATGGGCCAGTGGACCCGCGTTCAACTGCAGCTCGGGCG  
 ACTTCATCTTCTGCTGCGGGACTTGTGGCTTCCGGTTCTGCTGCACGTTTAAAGACGGCGACTGAACCA  
 AAGCACCTGCACCAACTACGACACGCCGCTCTGGCTCAACACCGGCAAGCCCCCGCCGAAGGACGAC  
 CCCTTGCACGACCCACCAAGGACAAGACCAACCTGATCGTCTACATCATCTGCGGGGTGGTGGCCGTCA  
 TGGTGCTCGTGGGCATCTTACCAAGCTGGGGCTGGAGAAAGCGCACCGGCCCAAGGGAGCACATGTC  
 CAGGGCCCTTGGGATGTCATGAGACCACAGGGCCACTGCAACTGATCACATGGAGAGAGACCTAAAC  
 ATCGTTGTCCACGTCCAGCATTATGAGAACATGGACACGAGAACCCCATAAATAATCTTCATGCCACCC  
 AGATGAACAACGCAAGTGGCCACCTCTCCTCTGCTCCAGCAGATGGGCCATCCACATTCGTACCCGAACT  
 GGGCCAGATCTCAACCCCTATGAACAGCAGCCACCAGGAAAAGAGCTCAACAAGTACGCCTCCTTAAAG  
 GCAGTCGGAAGTTCTGATGGTACTGGGAGTATCGACACTTAAGTACCAAAAAGCTGACAAGGTCAATG  
 ACGACTTCTACCAAGCGACGGCACCTGGCTGAGCTGGCTGCCAAGGGGAATTACCTCTGCACCCCGT  
 AAGAGTGGAGGACGAGCCCCGGGCTTCAGCCCTGAGCACGGTCTGCCAAGCAGAATGGACAGAAGTCC  
 CGCACCAACAAGATGCCCCACATCCCCTGGCCTACACCTTACCACCACTTTAAGGGCTGGGACCCCA  
 ACGAGCAGTCCCTCCGGCGGCAGGCTTACAGCAACAAGGGCAAGCTTGGCACGGCCGAGACAGGCTCCAG  
 CGACCCCTTGGGAATCGCCCCAGCACTACCCACCCCAAGCCATACTTCATCACCAACAGCAAAAACA  
 GAAGTACTGTC

**ACGCGT**ACGCGGCCGCTCGAGCAGAACTCATCTCAGAAGAGGATCTGGCAGCAATGATATCCTGGATT  
 ACAAGGATGACGACGATAAGGTTTAA

**Protein Sequence:**

>RC227529 representing NM\_001145204  
 Red=Cloning site Green=Tags(s)

MRRVLRLLLGCFTELCAVRCRAQERAGHGQLAQLGGVLLLAGGNRSGAASGEASEGAEASDAPPTRAPT  
 PDFCRGYFDVMGQWDPFNCSSGDFIFCCGTCGFRFCCTFKKRLNQSTCTNYDTPLWLNTGKPPARKDD  
 PLHDPTKDKTNLIVYIICGVVAVMVLVGIPTKLGLEKAHRPQREHMSRALADVMPQGHNCNDHMERDLN  
 IVVHVQHYENMDTRTPINNLHATQMNAVPTSPLLQQMGHPHSYPNLGQISNPYEQQPPGKELNKYASLK  
 AVGSSDGDWAVSTLSPKADKVNDDFYTKRRHLAELAAKGNLPLHPVVEDEPRAFSPEHGPAKQNGQKS  
 RTNKMPHPLAYTSTTNFKGWDPNESLRRQAYSNGKLGTAETGSSDPLGTRPQHYPYPPYFITNSKT  
 EVTV

**TR**TRPLEQKLISEEDLAANDILDYKDDDDKV

**Chromatograms:**

[https://cdn.origene.com/chromatograms/mk8037\\_g08.zip](https://cdn.origene.com/chromatograms/mk8037_g08.zip)

**Restriction Sites:**

Sgfl-Mlul

**Cloning Scheme:**


**ACCN:** NM\_001145204

**ORF Size:** 1272 bp

**OTI Disclaimer:** Due to the inherent nature of this plasmid, standard methods to replicate additional amounts of DNA in E. coli are highly likely to result in mutations and/or rearrangements. Therefore, OriGene does not guarantee the capability to replicate this plasmid DNA. Additional amounts of DNA can be purchased from OriGene with batch-specific, full-sequence verification at a reduced cost. Please contact our customer care team at [custsupport@origene.com](mailto:custsupport@origene.com) or by calling 301.340.3188 option 3 for pricing and delivery.

The molecular sequence of this clone aligns with the gene accession number as a point of reference only. However, individual transcript sequences of the same gene can differ through naturally occurring variations (e.g. polymorphisms), each with its own valid existence. This clone is substantially in agreement with the reference, but a complete review of all prevailing variants is recommended prior to use. [More info](#)

**OTI Annotation:** This clone was engineered to express the complete ORF with an expression tag. Expression varies depending on the nature of the gene.

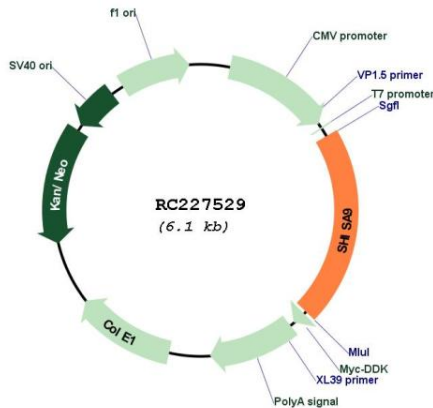
**Components:** The ORF clone is ion-exchange column purified and shipped in a 2D barcoded Matrix tube containing 10ug of transfection-ready, dried plasmid DNA (reconstitute with 100 ul of water).

- Reconstitution Method:**
1. Centrifuge at 5,000xg for 5min.
  2. Carefully open the tube and add 100ul of sterile water to dissolve the DNA.
  3. Close the tube and incubate for 10 minutes at room temperature.
  4. Briefly vortex the tube and then do a quick spin (less than 5000xg) to concentrate the liquid at the bottom.
  5. Store the suspended plasmid at -20°C. The DNA is stable for at least one year from date of shipping when stored at -20°C.

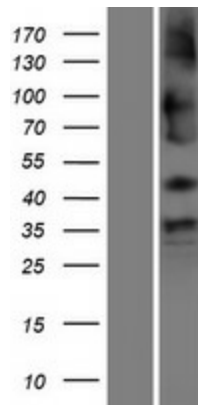
**RefSeq:** [NM\\_001145204.3](#)

**RefSeq ORF:** 1275 bp  
**Locus ID:** 729993  
**UniProt ID:** [B4DS77](#)  
**Cytogenetics:** 16p13.12  
**MW:** 46.7 kDa  
**Gene Summary:** Regulator of short-term neuronal synaptic plasticity in the dentate gyrus. Associates with AMPA receptors (ionotropic glutamate receptors) in synaptic spines and promotes AMPA receptor desensitization at excitatory synapses (By similarity).[UniProtKB/Swiss-Prot Function]

### Product images:



Circular map for RC227529



Western blot validation of overexpression lysate (Cat# [LY428750]) using anti-DDK antibody (Cat# [TA50011-100]). Left: Cell lysates from untransfected HEK293T cells; Right: Cell lysates from HEK293T cells transfected with RC227529 using transfection reagent MegaTran 2.0 (Cat# [TT210002]).