

Product datasheet for **RC227522**

RRNAD1 (NM_001142560) Human Tagged ORF Clone

Product data:

Product Type:	Expression Plasmids
Product Name:	RRNAD1 (NM_001142560) Human Tagged ORF Clone
Tag:	Myc-DDK
Symbol:	RRNAD1
Synonyms:	C1orf66; CGI-41; METTL25B
Mammalian Cell Selection:	Neomycin
Vector:	pCMV6-Entry (PS100001)
E. coli Selection:	Kanamycin (25 ug/mL)
ORF Nucleotide Sequence:	>RC227522 representing NM_001142560 Red=Cloning site Blue=ORF Green=Tags(s)

TTTTGTAATACGACTCACTATAGGGCGGCCGGAATTCGTCGACTGGATCCGGTACCGAGGAGATCTGCC
GCC**CGATCGCC**

ATGCCGGGCATCTCCGCCGAGGCCTCTCATGAGGGGAGGAAGCAGCTAGCTGTTAACCTCACCCGTG
TCCTGGCACTCTACCGTTCATCTTGGATGCCTACATCATCGAATTTTTCACAGACAACCTATGGGACAC
ACTCCCTTGCTCATGGCAGGAAGCATTGGATGGACTGAAACCACCACAGCTGGCCACAATGCTGCTGGGG
ATGCCTGGGAAGGGGAGGTCGTCAGGTACAGGTCAGTGTGCCACTCACCTGCTGGCCCTGAAGTCCA
CGGCGTGTGCCCTGGCCTTTACCCGGATGCCTGGCTTTCAGACCCCTCAGAATTCCTGGAGAACCCAG
CCAGAGCTCCCGACTAACAGCTCCATTCGGAAACATGTCAGGCCAAGAAGCAGCATGAGATCCGAGG
CTGGGAGAGTTGGTGAAGAAGCTGAGTGATTTACAGGCTGCACCCAGGTTGTAGACGTGGGCTCAGGCC
AGGGCCATCTCTCCCGCTTCATGGCTCTTGGCCTGGGGTTGATGGTGAAGAGCATCGAAGGGGATCAGAG
ACTGGTGGAGAGAGCCCAGCGCCTGGACCAGGAGCTTCTGAGGCTCTGGAGAAAGAGGAGAAGAGGAAC
CCGAGATATGTGCAGCGGGGCTACAGCGAGTGGGGTAGATCCCAGCTGCCACTGAATCTGGCTGCC
CTTCAGGCCACGTGGCCAGGAGAACCGTGTGGTGGCCTTCTCAGCCTGGCTCTACTGCTGCCCCAC
TGGTGGAGACGCTTATTCTACTGGACCGGCTGCTGTACCTTCAGGAACAGGGTTTCCATGC

ACGCGTACGCGGCCGCTCGAGCAGAACTCATCTCAGAAGAGGATCTGGCAGCAAATGATATCCTGGATT
ACAAGGATGACGACGATAAGGTTTAA



[View online »](#)

Protein Sequence: >RC227522 representing NM_001142560
Red=Cloning site Green=Tags(s)

MPGISARGLSHEGRKQLAVNLTRVLALYRSILDAYIIIEFFDNLWDTLPCSWQEALDGLKPPQLATMLLG
 MPGEGEVRYRSVWPLTLLALKSTACALAFTRMPGFQTPSEFLENPSQSSRLTAPFRKHVRPKQHEIRR
 LGELVKKLSDFTGCTQVVDVVGSGQGHLSRFMALGLGLMVKSIEGDQRLVERAQRLDQELLQALEKEEKRN
 PQICAAGATASGARSPAATESGCPSPGRPGPECGLLQPGSTACPTGGDAYSTGPAAVPSGTGFPC

TRTRPLEQKLISEEDLAANDILDYKDDDDKV

Chromatograms: https://cdn.origene.com/chromatograms/mk8048_h04.zip

Restriction Sites: SgfI-MluI

Cloning Scheme:

Cloning sites used for ORF Shuttling:



* The last codon before the Stop codon of the ORF

ACCN: NM_001142560

ORF Size: 831 bp

OTI Disclaimer: The molecular sequence of this clone aligns with the gene accession number as a point of reference only. However, individual transcript sequences of the same gene can differ through naturally occurring variations (e.g. polymorphisms), each with its own valid existence. This clone is substantially in agreement with the reference, but a complete review of all prevailing variants is recommended prior to use. [More info](#)

OTI Annotation: This clone was engineered to express the complete ORF with an expression tag. Expression varies depending on the nature of the gene.

Components: The ORF clone is ion-exchange column purified and shipped in a 2D barcoded Matrix tube containing 10ug of transfection-ready, dried plasmid DNA (reconstitute with 100 ul of water).

- Reconstitution Method:**
1. Centrifuge at 5,000xg for 5min.
 2. Carefully open the tube and add 100ul of sterile water to dissolve the DNA.
 3. Close the tube and incubate for 10 minutes at room temperature.
 4. Briefly vortex the tube and then do a quick spin (less than 5000xg) to concentrate the liquid at the bottom.
 5. Store the suspended plasmid at -20°C. The DNA is stable for at least one year from date of shipping when stored at -20°C.

RefSeq: [NM_001142560.2](#)

RefSeq ORF: 834 bp

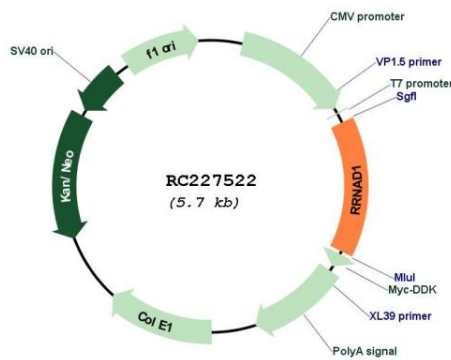
Locus ID: 51093

UniProt ID: [Q96FB5](#)

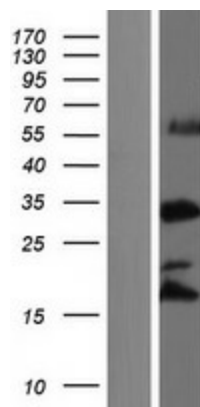
Cytogenetics: 1q23.1

MW: 29.5 kDa

Product images:



Circular map for RC227522



Western blot validation of overexpression lysate (Cat# [LY428176]) using anti-DDK antibody (Cat# [TA50011-100]). Left: Cell lysates from untransfected HEK293T cells; Right: Cell lysates from HEK293T cells transfected with RC227522 using transfection reagent MegaTran 2.0 (Cat# [TT210002]).