

Product datasheet for **RC227508**

SLITRK2 (NM_001144008) Human Tagged ORF Clone

Product data:

| | |
|---------------------------|---|
| Product Type: | Expression Plasmids |
| Product Name: | SLITRK2 (NM_001144008) Human Tagged ORF Clone |
| Tag: | Myc-DDK |
| Symbol: | SLITRK2 |
| Synonyms: | CXorf1; CXorf2; SLITL1; TMEM257 |
| Mammalian Cell Selection: | Neomycin |
| Vector: | pCMV6-Entry (PS100001) |
| E. coli Selection: | Kanamycin (25 ug/mL) |



[View online »](#)

**ORF Nucleotide
Sequence:**

>RC227508 ORF sequence
 Red=Cloning site Blue=ORF Green=Tags(s)

TTTTGTAATACGACTCACTATAGGGCGGCCGGGAATTCGTCGACTGGATCCGGTACCGAGGAGATCTGCC
 GCC**CGCATCGCC**

RCATGCTGAGCGCGTGGTTGTTCTCAGTGTGTTAACCGTGGCCGGGATCTTACAGACAGAGAGTGC
 AACTGCCAAAGACATTTGCAAGATCCGCTGTCTGTGCGAAGAAAAGGAAAACGTAATCAACTGT
 GAGAACAAAGGATTTACAACAGTTAGCCTGCTCCAGCCCCCAGTATCGAATCTATCAGCTTTTCTCA
 ATGAAACCTCTTGACAAGACTGTATCCAAACGAATTTGTCAATTACTCCAACGCGGTGACTCTTCACT
 AGGTAACAACGGGTTACAGGAGATCCGAACGGGGCATTGAGTGGCCTGAAAACCTCTCAAAAGACTGCAT
 CTCAACAACAACAAGCTTGAGATATTGAGGGAGGACACCTTCTAGGCCTGGAGAGCCTGGAGTATCTCC
 AGGCCGACTACAATTACATCAGTGCCATCGAGGCTGGGGCATTGAGCAAACTTAAACAAGCTCAAAGTGT
 CATCTGAAATGACAACCTTCTGCTTTCAGTCCAGCAATGTGTTCCGCTTTGCTCCTGCTGACCCACTTA
 GACCTCAGGGGAATAGGCTAAAAGTAATGCCTTTTGTGGCGTCTTGAACATATTGGAGGGATCATGG
 AGATTCAGCTGGAGGAAAATCCATGGAATTGCACTTGTGACTTACTTCTCTCAAGGCCTGGCTAGACAC
 CATAACTGTTTTGTGGGAGAGATTGTCTGTGAGACTCCCTTTAGGTTGCATGGGAAAGACGTGACCCAG
 CTGACCCAGGCAAGACCTCTGTCCAGAAAAAGTCCAGTGATTCCAGTCAGAGGGGACAGCATGCTGACA
 CCCACGTCCAAAGGCTGTACCTACAATGAATCCTGCTCTCAACCAACCCAGGGCTCCGAAAGCCAGCCG
 GCCGCCAAAAATGAGAAATCGTCCAACCTCCCGAGTGACTGTGTCAAAGGACAGGCAAAGTTTTGGACCC
 ATCATGGTGTACCAGACCAAGTCTCCTGTGCCTCTCACCTGTCCAGCAGCTGTGTCTGCACCTCTCAGA
 GCTCAGACAATGGTCTGAATGTAACCTGCAAGAAAGGAAAGTTCATAATCTCTGACCTGCAGCCCAA
 ACCGACCAAGTCCAAAGAACTCACTAACAGGGAATCTTCAAACCTGTCTATAAGAATGACCTCTTA
 GAATACAGTTCTTTGGACTTACTGCACTTAGGAAACAACAGGATTGCAAGTCACTCAGGAAGGTGCCTTTA
 CAAACCTGACCAGTTTACGCAGACTTTATCTGAATGGCAATTACCTTGAAGTGTGTACCCCTTCTATGTT
 TGATGGACTGCAGAGCTTGAATATCTCTATTTAGAGTATAATGTCATTAAAGGAAATTAAGCCTCTGACC
 TTTGATGCTTTGATTAACCTACAGCTACTGTTTCTGAACAACAACCTTCTTCGGTCTTACCTGATAATA
 TATTTGGGGGACGGCCCTAACCCAGGCTGAATCTGAGAAACAACCATTTTTCTCACCTGCCCGTAAAGG
 GGTCTGGATCAGCTCCCGCTTTCATCCAGATAGATCTGCAGGAGAACCCTGGGACTGTACCTGTGAC
 ATCATGGGGCTGAAAGACTGGACAGAACATGCCAATCCCCTGTCATCATTAAAGAGTGTGCGAAT
 CTCTGCTAAGCATGCAGGGGAGATACTAAAATTTCTGGGGAGGGAGGCTATCTGTCCAGACAGCCCAA
 CTTGTCCAGATGGAACCGTCTGTCAATGAATCACAAATACAGACACCTCGGTGCTTGTGTCTCCT
 AGTTCTATCCTGAACTACACACTGAAGTTCCTGCTGTCTTAATTCTGGGATTGCTTGTGTTTTCA
 TCTTATCTGTCTTTTTGGGGCTGGTTTATTCGCTTTTGTCTTGAACCGCCGAAAGGGAGTGCCGAGCGT
 TCCCAGGAATACCAACAACCTTAGACGTAAGCTCCTTTCAATTACAGTATGGGTCTTACAACACTGAGACT
 CACGATAAAACAGACGGCCATGTCTACAACATATCCCCCACCTGTGGGTGAGATGTGCCAAAACCCCA
 TCTACATGCAGAAGGAAGGAGACCCAGTAGCCTATTACCGAAACCTGCAAGAGTTCAGCTATAGCAACCT
 GGAGGAGAAAAAAGAAGGCCAGCCACACCTGCTTACACAATAAGTGCCACTGAGCTGTAGAAAAGCAG
 GCCACACCAAGAGAGCCTGAGCTGCTGTATCAAAATATTGCTGAGCGAGTCAAGGAACCTCCAGCCGAG
 GCCTAGTCCACTATAACTTTTGTACCTTACCTAAAAGGCAGTTTGCCCTTCTATGAATCTCGACGCCA
 AAACCAAGACAGAATCAATAAAACCGTTTTATATGGAACCTCCAGGAAATGCTTTGTGGGCAGTAAAA
 CCCAACCCCTTTACTGCAAGCTAAGCCGCAATCAGAACCAGGACTACCTCGAAGTCTGGAAAAACAAA
 CTGCAATCAGTCAGCTG

ACGCGTACGCGGCCGCTCGAGCAGAACTCATCTCAGAAGAGGATCTGGCAGCAATGATATCCTGGATT
 ACAAGGATGACGACGATAAGGTTTAA

Protein Sequence:

>RC227508 protein sequence
 Red=Cloning site Green=Tags(s)

XC*AAFSSVC*PWPGSYRQVAKLPKTFARSAVCAKKRKY*ISTVRTKDLQQLACSSPPSIESISFFS
 METS*QDCIQTNLSITPTR*LFT*VTTGYRRSERGHSVA*KLSKDCISTTSLRY*GRTPS*AWRAWSIS
 RPTTITSVPSRLGHSANLTSKCSS*MTTFCFHCPAMCSALSC*PT*TSGGIG*K*CLLLASLNILEGSW
 RFSWRKIHGIALVTYFLSRPG*TP*LFLWERLSVRLPLGCMGKT*PS*PGKTSVPEKVPVIVPVRGAAML
 PTSKGCHLQ*ILLSTQPLRKPAGRPK*EIVQLPE*LCQRTGKVLDPWCWTRPSLLCLSPVPAAVSAPLR
 AQTMV*M*TAKKGSSLSILTCSPNRPVQRNST*QGTIFKLSIRMTS*NTVLWTYCT*ETTGLQSFVKVPL
 QT*PVYADFI*MAITLKCCTLLCLMDCRACNISI*SIMSLRKL*PLML*LTYSYCF*TTTFFGPYLII
 YLGGRP*PG*I*ETTIFLTC*KGFWISSRLSSR*ICRRTPGTVPTSWG*KTGQNPPIPLSSLMR*LAN
 LLLSMQGRY*NFWGGRLSVQTAQTCQMEPSCQ*ITIQTHLGRVCLLVILNYTLKFHCLS*FWDCLLFS
 SYLSVLGLVYSSLS*NAERECRAFPGIPTT*T*APFNYSMGLTTLRLTIKQTAMSTTISPHLWVRCAKTP
 STCRRKETQ*PITETCKSAIATWRRKKKSQPHELLTQ*VPLSC*KSRPHQESLSCCIKILLSERNFPAQ
 A*STITFVPLYKGSLLPLMNLDAKTKTESIKPFYMELPGNALWGSQNPTTLYCKLSRNQNRRTSKFWKKN
 LQSVS

TRTRPLEQKLISEEDLAANDILDYKDDDDKV

Chromatograms:

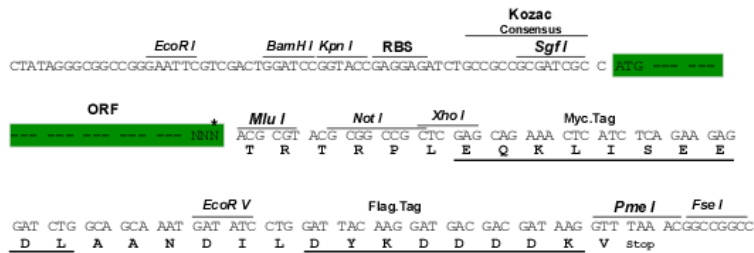
https://cdn.origene.com/chromatograms/mg4079_e01.zip

Restriction Sites:

SgfI-MluI

Cloning Scheme:

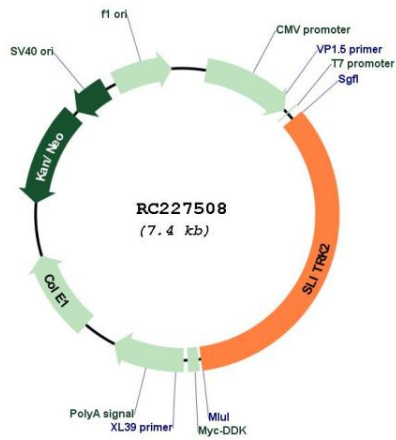
Cloning sites used for ORF Shuttling:



* The last codon before the Stop codon of the ORF

| | |
|-------------------------------|---|
| ACCN: | NM_001144008 |
| ORF Size: | 2535 bp |
| OTI Disclaimer: | The molecular sequence of this clone aligns with the gene accession number as a point of reference only. However, individual transcript sequences of the same gene can differ through naturally occurring variations (e.g. polymorphisms), each with its own valid existence. This clone is substantially in agreement with the reference, but a complete review of all prevailing variants is recommended prior to use. More info |
| OTI Annotation: | This clone was engineered to express the complete ORF with an expression tag. Expression varies depending on the nature of the gene. |
| Components: | The ORF clone is ion-exchange column purified and shipped in a 2D barcoded Matrix tube containing 10ug of transfection-ready, dried plasmid DNA (reconstitute with 100 ul of water). |
| Reconstitution Method: | <ol style="list-style-type: none">1. Centrifuge at 5,000xg for 5min.2. Carefully open the tube and add 100ul of sterile water to dissolve the DNA.3. Close the tube and incubate for 10 minutes at room temperature.4. Briefly vortex the tube and then do a quick spin (less than 5000xg) to concentrate the liquid at the bottom.5. Store the suspended plasmid at -20°C. The DNA is stable for at least one year from date of shipping when stored at -20°C. |
| RefSeq: | NM_001144008.2 , NP_001137480.1 |
| RefSeq Size: | 4166 bp |
| RefSeq ORF: | 2538 bp |
| Locus ID: | 84631 |
| UniProt ID: | Q9H156 |
| Cytogenetics: | Xq27.3 |
| Protein Families: | Transmembrane |
| MW: | 95.4 kDa |
| Gene Summary: | This gene encodes an integral membrane protein that contains two N-terminal leucine-rich repeats domains and contains C-terminal regions similar to neurotrophin receptors. The encoded protein may play a role in modulating neurite activity. Alternatively spliced transcript variants encoding the same protein have been described.[provided by RefSeq, Feb 2010] |

Product images:



Circular map for RC227508