

## Product datasheet for RC227506

### NEMP2 (NM\_001142645) Human Tagged ORF Clone

#### Product data:

Product Type:	Expression Plasmids
Product Name:	NEMP2 (NM_001142645) Human Tagged ORF Clone
Tag:	Myc-DDK
Symbol:	NEMP2
Synonyms:	TMEM194B
Mammalian Cell Selection:	Neomycin
Vector:	pCMV6-Entry (PS100001)
E. coli Selection:	Kanamycin (25 ug/mL)
ORF Nucleotide Sequence:	>RC227506 representing NM_001142645 Red=Cloning site Blue=ORF Green=Tags(s)

TTTTGTAATACGACTCACTATAGGGCGGCCGGAATTCGTCGACTGGATCCGGTACCGAGGAGATCTGCC  
GCC**CGATCGCC**

ATGGGGCCCGCCCAAGGGCGGTGGTGGCTGCTGCTCTGGCTGCCGCCCTGGCCACACTGCCCGTGC  
GGGAGGCGCGCGGCAGCGTTATCAGTTCGTAGGTGTAAGCTTTGAAGGAAAAAGATTTAATTAGA  
GTCTGAGTCAGACTGTTACTGCTACAATCAAAATCCCAAGTGGAGTGAAATACATATGGTCAACTATG  
CAGGTGAAAATACCAGTCCAGGCTGTTGAGAATTGATATATCGCAGAAAGACATAATTGCCAATATC  
CAGAAAACATTCTATCTTTTATCAAATGTGTGATTCAAACTTTGGATACCAAAGGAATCTAACGAAAT  
AACCATAAATCATCAATCCATACAGGGAGACTGTGTGCTTCTCTGTGGAGCCTGTCAAGAAGATATTTAAC  
TATATGATACATGTGAATCGAAACATCATGGATTTCAAACCTTCTCTGTGTTTGTGGCAGGAGTTTTTC  
TTTTCTTTTATGCAAGGACCCTGAGTCAAAGCCCTACTTTCTATTACTCCTCGGGAAGTGTGCTAGGTGT  
TCTAATGACATTAGTCTTTGCTTGTGCTGTTGGTAAAAGATTCATTCCGAAGTATAGCACCTTTGGGCT  
CTAATGGTTGGTGTGGTTTGCCTCAGTTTATATTGATGCCAGTTGATGGAAGATCTGAAGTGGCTGT  
GGTATGAAAACAGGATATATGATTAGGCTATGCTTGATAGTTGGATTTTTAGCTTTGTTGTTGTTA  
CAAGCATGGGCCCTTGCAGACGACAGGAGCAGAAGTCTTCTGATGTGGATGCTGCGACTCCTCTCCCTG  
GTTCTGGTCTATGCTGGTGTGGCCGTGCCCTCAGTTTGCCTATGCAGCCATAATCCTCCTCATGTCCTCT  
GGAGTCTGCACTACCCACTGAGAGCATGCAGTTATATGAGGTGGAAAATGGAGCAGTGGTTTACATCAA  
AGAGCTGGTGGTAAAATATCTTACGGAAGACGAGTACAGGGAGCAAGCTGATGCTGAAAACGAACAGTGT  
CTGGAGGAGCTACGCCGGCCTGCCAAAACCCGACTTTCCCTCATGGCTGGTCTCTCCAGACTCCACA  
CTCCTAGCAAATTTGCAGACTTTGTTCTTGGAGGAAGCCACTTGTACCTGAAGAAATCAGTCTGCATGA  
AGAGCAGTATGGCCTTGGGGTGCCTTCTTGAAGAGCAGCTCTTTAACCCGAGTACTGCC

**ACGCGT**ACGCGGCCGCTCGAGCAGAAACTCATCTCAGAAGAGGATCTGGCAGCAAATGATATCTGGATT  
ACAAGGATGACGACGATAAGGTTTAA



[View online >](#)

**Protein Sequence:** >RC227506 representing NM\_001142645  
 Red=Cloning site Green=Tags(s)

MGPRQGRWLLLLLWLPLATLPVRGEAAAAALSVRRCKALKEKDLIRTSESDCYCYNQNSQVEWKYIWSTM  
 QVKITSPGLFRIYVIAERHNCQYPENILSFIKCVIHNFWIPKESNEITIIINPYRETVCFSVEPVKIKFN  
 YMIHVNRNIMDFKLFLVAVAGVLFYARTLSQSPTFFYSSSGTVLGVLMTLVFLVLLLVKRFIPKYSTFWA  
 LMVGCWFASVYIVCQLMEDLKWLWYENRIYVLGYVLIVGFFSFVVCYKHGPLADDRSRSLLMWMLRLLSL  
 VLVYAGVAVPQFAYAAIILLMSSWSLHYPLRACSYMRWKMEQWFTSKELVVKYLTEDEYREQADAETNSA  
 LEELRRACRKPDFPSWL VVSR LH TPKSFA DFV LGGSHLSPEEISLHEEQYGLGGAFLEEQLFNPSTA

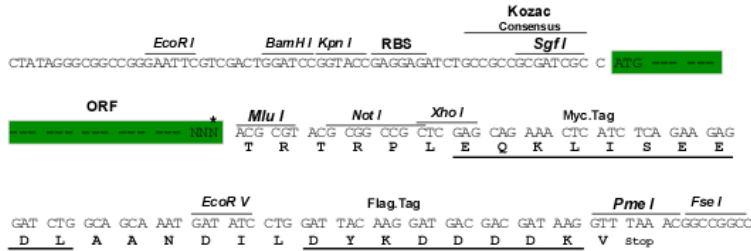
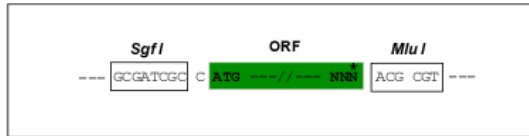
TRTRPLEQKLISEEDLAANDILDYKDDDDKV

**Chromatograms:** [https://cdn.origene.com/chromatograms/mk8037\\_g12.zip](https://cdn.origene.com/chromatograms/mk8037_g12.zip)

**Restriction Sites:** SgfI-MluI

**Cloning Scheme:**

Cloning sites used for ORF Shuttling:



\* The last codon before the Stop codon of the ORF

**ACCN:** NM\_001142645

**ORF Size:** 1251 bp

**OTI Disclaimer:** The molecular sequence of this clone aligns with the gene accession number as a point of reference only. However, individual transcript sequences of the same gene can differ through naturally occurring variations (e.g. polymorphisms), each with its own valid existence. This clone is substantially in agreement with the reference, but a complete review of all prevailing variants is recommended prior to use. [More info](#)

**OTI Annotation:** This clone was engineered to express the complete ORF with an expression tag. Expression varies depending on the nature of the gene.

**Components:** The ORF clone is ion-exchange column purified and shipped in a 2D barcoded Matrix tube containing 10ug of transfection-ready, dried plasmid DNA (reconstitute with 100 ul of water).

- Reconstitution Method:**
1. Centrifuge at 5,000xg for 5min.
  2. Carefully open the tube and add 100ul of sterile water to dissolve the DNA.
  3. Close the tube and incubate for 10 minutes at room temperature.
  4. Briefly vortex the tube and then do a quick spin (less than 5000xg) to concentrate the liquid at the bottom.
  5. Store the suspended plasmid at -20°C. The DNA is stable for at least one year from date of shipping when stored at -20°C.

**RefSeq:** [NM\\_001142645.2](#)

**RefSeq ORF:** 1254 bp

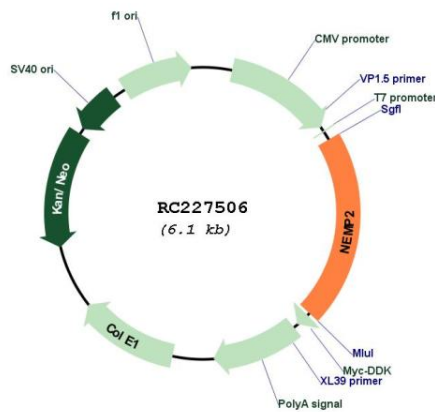
**Locus ID:** 100131211

**UniProt ID:** [A6NFY4](#)

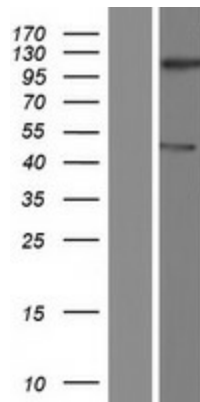
**Cytogenetics:** 2q32.2

**MW:** 48.5 kDa

**Product images:**



Circular map for RC227506



Western blot validation of overexpression lysate (Cat# [LY428229]) using anti-DDK antibody (Cat# [TA50011-100]). Left: Cell lysates from untransfected HEK293T cells; Right: Cell lysates from HEK293T cells transfected with RC227506 using transfection reagent MegaTran 2.0 (Cat# [TT210002]).