



**Protein Sequence:** >RC227491 protein sequence  
Red=Cloning site Green=Tags(s)

MALSLGWKAHRNHCGLLLQALRSSGLLLFPCGQCPWRGAGSFLDPEIKAFLEENTEVTSSGSLTPEIQLR  
 LLTPRCKFWWERADLWPHSDPYWAIYWPGGQALSRYLNDNPVVRGKSVLDLGSGCCGATAIAAKMSGASR  
 ILANDIDPIAGMAITLNCELNRLNPFPIILIQNILNLEQDKWDLVVLGDMFYDEDLADSLHQWLKCKFWTY  
 RTRVLIGDPGRPQFSGHSIQHHLHKVVEYSLLESTRQENSGLTTSTVWGFQP

TRTRPLEQKLISEEDLAANDILDYKDDDDKV

**Chromatograms:** [https://cdn.origene.com/chromatograms/mk6348\\_a01.zip](https://cdn.origene.com/chromatograms/mk6348_a01.zip)

**Restriction Sites:** SgfI-MluI

**Cloning Scheme:**

Cloning sites used for ORF Shuttling:



**ACCN:** NM\_001135864

**ORF Size:** 786 bp

**OTI Disclaimer:** The molecular sequence of this clone aligns with the gene accession number as a point of reference only. However, individual transcript sequences of the same gene can differ through naturally occurring variations (e.g. polymorphisms), each with its own valid existence. This clone is substantially in agreement with the reference, but a complete review of all prevailing variants is recommended prior to use. [More info](#)

**OTI Annotation:** This clone was engineered to express the complete ORF with an expression tag. Expression varies depending on the nature of the gene.

**Components:** The ORF clone is ion-exchange column purified and shipped in a 2D barcoded Matrix tube containing 10ug of transfection-ready, dried plasmid DNA (reconstitute with 100 ul of water).

**Reconstitution Method:**

1. Centrifuge at 5,000xg for 5min.
2. Carefully open the tube and add 100ul of sterile water to dissolve the DNA.
3. Close the tube and incubate for 10 minutes at room temperature.
4. Briefly vortex the tube and then do a quick spin (less than 5000xg) to concentrate the liquid at the bottom.
5. Store the suspended plasmid at -20°C. The DNA is stable for at least one year from date of shipping when stored at -20°C.

**RefSeq:** [NM\\_001135864.1](#), [NP\\_001129336.1](#)

**RefSeq Size:** 2103 bp

**RefSeq ORF:** 789 bp

**Locus ID:** 254013

**UniProt ID:** [Q8IXQ9](#)

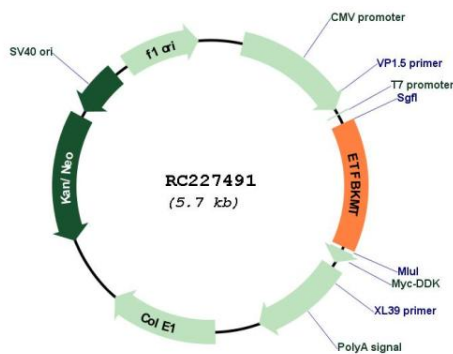
**Cytogenetics:** 12p11.21

**Protein Families:** Druggable Genome

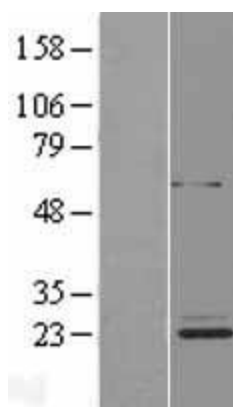
**MW:** 29.5 kDa

**Gene Summary:** Protein-lysine methyltransferase that selectively trimethylates the flavoprotein ETFB in mitochondria (PubMed:25023281, PubMed:25416781). Thereby, may negatively regulate the function of ETFB in electron transfer from Acyl-CoA dehydrogenases to the main respiratory chain (PubMed:25416781).[UniProtKB/Swiss-Prot Function]

### Product images:



Circular map for RC227491



Western blot validation of overexpression lysate (Cat# [LY427725]) using anti-DDK antibody (Cat# [TA50011-100]). Left: Cell lysates from untransfected HEK293T cells; Right: Cell lysates from HEK293T cells transfected with RC227491 using transfection reagent MegaTran 2.0 (Cat# [TT210002]).