

Product datasheet for **RC227488**

ATXN3L (NM_001135995) Human Tagged ORF Clone

Product data:

Product Type:	Expression Plasmids
Product Name:	ATXN3L (NM_001135995) Human Tagged ORF Clone
Tag:	Myc-DDK
Symbol:	ATXN3L
Synonyms:	MJDJL
Mammalian Cell Selection:	Neomycin
Vector:	pCMV6-Entry (PS100001)
E. coli Selection:	Kanamycin (25 ug/mL)
ORF Nucleotide Sequence:	>RC227488 representing NM_001135995 Red=Cloning site Blue=ORF Green=Tags(s)

TTTTGTAATACGACTCACTATAGGGCGGCCGGAATTCGTCGACTGGATCCGGTACCGAGGAGATCTGCC
GCC**CGATCGCC**

ATGGATTTTCATCTTTTCATGAGAAACAGGAAGGTTTCTGTGTGCTCAGCACTGTCTGAACAATCTATTGC
AAGGAGAATATTTTAGCCCTGTGGAATTAGCCTCAATTGCACATCAGCTAGATGAAGAAGAGAGGATGAG
AATGGCAGAAGGAGGAGTCACCAAGTGAAGAGTATCTTGCAATTTTACAGCAGCCTTCAGAAAACATGGAT
GATACCGGTTTCTCTCCATTCAAGTAATAAGCAATGCCTTGAAGTTCTGGGTTTAGAGATCATCCATT
TCAATAATCCTGAATATCAGAAGCTCGGCATTGATCCTATAAATGAAAGATCTTTTATATGTAATTATAA
ACAACACTGGTTTACTATTAGAAAATTTGGAAAACACTGGTTAACTTGAATTCTCTCTTGGCGGGTCCA
GAATTAATATCAGATACATGCCTTGCAATTTCTTGGCTCGATTACAACAACAAGCATATTCTGTATTTG
TTGTCAAGGGTGTCTGCCAGACTGTGAAGCTGACCAACTCCTGCAGATCATCAGTGTGCAAGAGATGGA
TACACCAAACTTAATGGAAAAAATTAGTAAAACAAAAGAGCATAGAGTCTATAAAACAGTCCTTGAA
AAAGTATCAGAAGAAAGTGTGAGTCTGGAACATCAGACCAAGATGAGGAGGATTTTCAGAGGGCCCTTG
AACTAAGCCGCAAGAAACCAATAGAGAAGATGAACATCTCCGCAGTACTATTGAGTTAAGCATGCAAGG
TAGTTCGGGAAACACATCGAAGATCTTCAAAGACATCATGTGTAACCTCTGCTCAGAACAGCCGAAG
AAAATAAAAGAAGACTATTTTGAAGCATCAGCAGGAACAGAAGCAGCAACAACAGTCAGATCTGC
CGGGCCACAGTTCATACCTACACGAAAGGCCAACAACAAGTTCGAGAGCAATTGAGAGTGATCTCAGTGA
TGACATCAGTGAAGACACAGTACAGGCCGCTGTGACACCATTTAGAAAATTATGAGAAAGAATTTGAAA
ATCAAAGGGGAAAAA

ACGCGTACGCGGCCGCTCGAGCAGAACTCATCTCAGAAGAGGATCTGGCAGCAATGATATCCTGGATT
ACAAGGATGACGACGATAAGGTTTAA



[View online »](#)

Protein Sequence: >RC227488 representing NM_001135995
Red=Cloning site Green=Tags(s)

MDFIFHEKQEGFLCAQHCLNNLLQGEYFSPVELASIAHQLDDEERMMAEGGVTSEEYLAFLQQPSNMDDTGFFSIQVISNALKFWGLEIIHFNNPEYQKLGIDPINERSFICNYKQHWFTIRKFGKHWFNLSLLAGPELISDTCLANFLARLQQQAYSFVVKGDLPDCEADQLLQIISVEEMDTPKLNKGLVKQKEHRVYKTVLEKYSEESDESGETSDQDEEDFQRALELSRQETNREDEHLRSTIELSMQSSGNTSQDLPKTSVTPASEQPKIKEDYFEKHQQEQKQQQQSDLPGHSSYLHERPTTSSRAIESDLSDDISEDVTQAAVDITILEIMRKNLKIKEK

TRTRPLEQKLISEEDLAANDILDYKDDDDKV

Chromatograms: https://cdn.origene.com/chromatograms/mg4624_a01.zip

Restriction Sites: SgfI-MluI

Cloning Scheme:



ACCN: NM_001135995

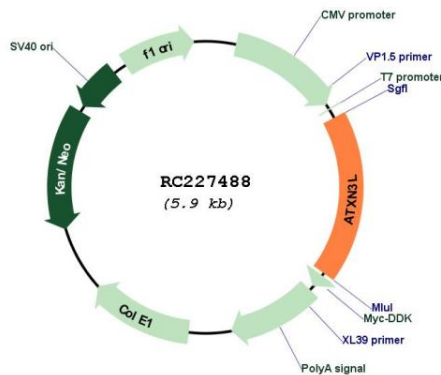
ORF Size: 1065 bp

OTI Disclaimer: Due to the inherent nature of this plasmid, standard methods to replicate additional amounts of DNA in E. coli are highly likely to result in mutations and/or rearrangements. Therefore, OriGene does not guarantee the capability to replicate this plasmid DNA. Additional amounts of DNA can be purchased from OriGene with batch-specific, full-sequence verification at a reduced cost. Please contact our customer care team at custsupport@origene.com or by calling 301.340.3188 option 3 for pricing and delivery.

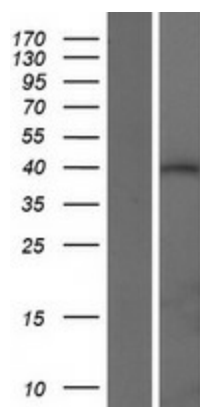
The molecular sequence of this clone aligns with the gene accession number as a point of reference only. However, individual transcript sequences of the same gene can differ through naturally occurring variations (e.g. polymorphisms), each with its own valid existence. This clone is substantially in agreement with the reference, but a complete review of all prevailing variants is recommended prior to use. [More info](#)

- OTI Annotation:** This clone was engineered to express the complete ORF with an expression tag. Expression varies depending on the nature of the gene.
- Components:** The ORF clone is ion-exchange column purified and shipped in a 2D barcoded Matrix tube containing 10ug of transfection-ready, dried plasmid DNA (reconstitute with 100 ul of water).
- Reconstitution Method:**
1. Centrifuge at 5,000xg for 5min.
 2. Carefully open the tube and add 100ul of sterile water to dissolve the DNA.
 3. Close the tube and incubate for 10 minutes at room temperature.
 4. Briefly vortex the tube and then do a quick spin (less than 5000xg) to concentrate the liquid at the bottom.
 5. Store the suspended plasmid at -20°C. The DNA is stable for at least one year from date of shipping when stored at -20°C.
- RefSeq:** [NM_001135995.1](#), [NP_001129467.1](#)
- RefSeq ORF:** 1068 bp
- Locus ID:** 92552
- UniProt ID:** [Q9H3M9](#)
- Cytogenetics:** Xp22.2
- Protein Families:** Druggable Genome
- MW:** 40.6 kDa
- Gene Summary:** This intronless gene may be a pseudogene (PMID:11450850). This gene is similar to the multi-exon gene which encodes ataxin 3 and contains a coding region which could encode a protein similar to ataxin 3. Mutations in the gene encoding ataxin 3 are associated with Machado-Joseph disease. [provided by RefSeq, Sep 2011]

Product images:



Circular map for RC227488



Western blot validation of overexpression lysate (Cat# [LY427748]) using anti-DDK antibody (Cat# [TA50011-100]). Left: Cell lysates from untransfected HEK293T cells; Right: Cell lysates from HEK293T cells transfected with RC227488 using transfection reagent MegaTran 2.0 (Cat# [TT210002]).