

Product datasheet for **RC227486**

ISOC2 (NM_001136202) Human Tagged ORF Clone

Product data:

Product Type: Expression Plasmids
Product Name: ISOC2 (NM_001136202) Human Tagged ORF Clone
Tag: Myc-DDK
Symbol: ISOC2
Mammalian Cell Selection: Neomycin
Vector: pCMV6-Entry (PS100001)
E. coli Selection: Kanamycin (25 ug/mL)
ORF Nucleotide Sequence: >RC227486 representing NM_001136202
Red=Cloning site Blue=ORF Green=Tags(s)

TTTTGTAATACGACTCACTATAGGGCGGCCGGAATTCGTCGACTGGATCCGGTACCGAGGAGATCTGCC
GCC**CGATCGCC**

ATGGCGGCTGCCAGGCCAGCCTGGGCCGAGTCTCCAGGATCCTCTGTCTGCTGTTCTGTGTGACATGC
AGGAGAAGTTCGCCACAACATCGCCTACTTCCCACAGATCGTCTCAGTGGCTGCCCGCATGCTCAAGAA
CACGACCCTGGACCTCTAGACCGGGGGCTGCAGGTCCATGTGGTGGTGGACGCCTGCTCCTCACGCAGC
CAGGTGGACCGGCTGGTGGCTCTGGCCCGCATGAGACAGAGTGGTGCCTTCTCTCCACCAGCGAAGGGC
TCATTCTGCAGCTTGTGGCGATGCCGTCCACCCCAAGGAGATCCAGAACTCATCAAGGAGCC
CGCCCCAGACAGCGGACTGCTGGCCTCTTCCAAGGCCAGAACTCCCTCCTCCAC

ACGCGTACGCGGCCGCTCGAGCAGAACTCATCTCAGAAGAGGATCTGGCAGCAAATGATATCCTGGATT
ACAAGGATGACGACGATAAGGTTTAA

Protein Sequence: >RC227486 representing NM_001136202
Red=Cloning site Green=Tags(s)

MAAARPSLGRVLPGSSVLFCDMQEKFRHNIAYFPQIVSVAARMLKNTTLDLLDRGLQVHVVDACSSRS
QVDRLVALARMRQSGAFLSTSEGLILQLVGDAVHPQFKEIQKLIKPEPAPDSGLLGLFQGQNSLLH

TRTRPLEQKLISEEDLAANDILDYKDDDDKV

Chromatograms: https://cdn.origene.com/chromatograms/mk8038_a03.zip

Restriction Sites: Sgfl-MluI



[View online »](#)

Cloning Scheme:


ACCN: NM_001136202

ORF Size: 405 bp

OTI Disclaimer: The molecular sequence of this clone aligns with the gene accession number as a point of reference only. However, individual transcript sequences of the same gene can differ through naturally occurring variations (e.g. polymorphisms), each with its own valid existence. This clone is substantially in agreement with the reference, but a complete review of all prevailing variants is recommended prior to use. [More info](#)

OTI Annotation: This clone was engineered to express the complete ORF with an expression tag. Expression varies depending on the nature of the gene.

Components: The ORF clone is ion-exchange column purified and shipped in a 2D barcoded Matrix tube containing 10ug of transfection-ready, dried plasmid DNA (reconstitute with 100 ul of water).

- Reconstitution Method:**
1. Centrifuge at 5,000xg for 5min.
 2. Carefully open the tube and add 100ul of sterile water to dissolve the DNA.
 3. Close the tube and incubate for 10 minutes at room temperature.
 4. Briefly vortex the tube and then do a quick spin (less than 5000xg) to concentrate the liquid at the bottom.
 5. Store the suspended plasmid at -20°C. The DNA is stable for at least one year from date of shipping when stored at -20°C.

RefSeq: [NM_001136202.2](#)

RefSeq ORF: 408 bp

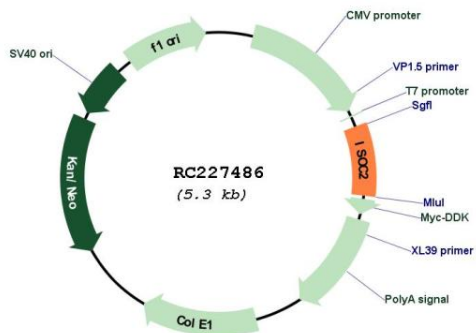
Locus ID: 79763

UniProt ID: [Q96AB3](#)

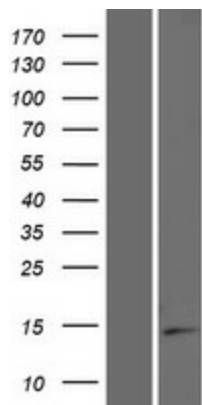
Cytogenetics: 19q13.42

MW: 14.6 kDa

Product images:



Circular map for RC227486



Western blot validation of overexpression lysate (Cat# [LY427850]) using anti-DDK antibody (Cat# [TA50011-100]). Left: Cell lysates from untransfected HEK293T cells; Right: Cell lysates from HEK293T cells transfected with RC227486 using transfection reagent MegaTran 2.0 (Cat# [TT210002]).