

Product datasheet for **RC227481**

ZNF447 (ZSCAN18) (NM_001145542) Human Tagged ORF Clone

Product data:

Product Type:	Expression Plasmids
Product Name:	ZNF447 (ZSCAN18) (NM_001145542) Human Tagged ORF Clone
Tag:	Myc-DDK
Symbol:	ZNF447
Synonyms:	ZNF447
Mammalian Cell Selection:	Neomycin
Vector:	pCMV6-Entry (PS100001)
E. coli Selection:	Kanamycin (25 ug/mL)



[View online »](#)

ORF Nucleotide Sequence:

>RC227481 representing NM_001145542
 Red=Cloning site Blue=ORF Green=Tags(s)

TTTTGTAATACGACTCACTATAGGGCGGCCGGAATTCGTCGACTGGATCCGGTACCGAGGAGATCTGCC
 GCC**CGGATCGCC**

ATCGCGAGAGTCGGAGGGCGAGCTGACGAGGACGCTACGGCGCGGGAAGTCTGTGGTTCTGGCACCAC
 CTGAGCCCACTGGGCATCTGGTCATCCCTGGCACCTCTCCTTTGGAGCCACCTTGTCCCTGGCTAGACAG
 TCACATTTTCCAGTGCCGTTTTGGAAAGATGTTGCCTTTGGAGAAGGCGTTTGCCTCCCCAGGAGCTCC
 CCAGCCCCCGCGGATCTGCCACGCCGGGTGAGCAGCCGGAGTCCAGCAGGAAGAACCAGACCATCC
 CTGAGAGGACCCCTGCTGACCTGGAGTTCTCCGCCTGCGTTTCCGGGAATTTGTCTACCAGGAGGCTGC
 CGGGCCCCACCAGACCCTGGCCCGGCTGCATGAGCTGTGCCGCCAGTGGCTGATGCCTGAGGCGCGCTCC
 AAGGAGCAGATGCTGGAGCTGCTGGTGTGGAGCAGTTCTGGGCATCCTGCCTGATAAGGTCGGGCCCT
 GGGTGGTGGCACAGTACCCTGAGAGCTGCAAGAAGGCAGCCTCCCTGGTGGAGGGCTCGCTGATGTCT
 GGAAGAGCCAGGGATGCTGCTGGCTCCCTGCGGGCTCATCCTCAATTCTTAGCGATGGAGTGTACGAG
 AGGCACATGGACCCTCTGCTGCTACCAGGCGAGCTCGCGAGCCCCAGCCAGGCCCTTGGAGCTGGGAGA
 TCCCGGCACCTTCTGAGACACCCTGGCTTTCTCCGGACCCCTGTTTCTGGAACAGAGGAGGGTCAGAGA
 AGCAAAGACCGAAGAGGACGGCCCTGCCAACCCGAGCAGAAGCTGAAGTCTTTCCAGAGGACCCTCAG
 CACCTGGGGGAGTGGGGCCACCTGGACCCTGCCAGGAGAACCTGAAGAGCTACCGGAAGCTGCTCCTGT
 GGGGGTATCAGCTTTCCAGCCTGACGCTGCCTCCAGGCTGGACACTGAGGAACCTCCGTTGGTGGAAAG
 AGATCCACAAGGAAGCAGCCTCCAGAAGGCGGGAGGCGGAGGAGAGCGCTGGTGCCTGCGAGGAG
 GCCGCCCCCGGGGGTCTGCTGAGCTGCCTACGGAGGCGCCCTGGGGACGCCCTTGCCTGATCCCC
 CGTCGGGCACCACTGAGGAGGAGGAAGCAGCCTGGGAAGGCCCGGACCCGAGGAGGAGGAGGAGCAGC
 GGAGTCCGACTCTGCCACCGGATCGCAGAGGAGTCCGTCATCCAGCAGCCTGCCCGGACAGGGGACCG
 GCGAAACTGGGAACCAAGAGGCCGACCCCGAGGATGGGACGGGAGAGCCTCGAGGGCTCTCTAGCT
 CCGGCGACAGCGCAGGGCTGGAGGCCGGGAGGGCCCTGGGGCTGACGAGCCGGGCTTGTCCCGGGGAA
 GCCCTATGCTGCGGGAGTGGGGGAGGCCTTCCGCTGGCTCTCGCACCTGATGGAGCACCACAGCAGC
 CATGGCGGCCGAAGCGCTACGCTGTGAGGGCTGCTGGAAGACCTTCCACTTACGCTGGCCCTAGCCG
 AGCACCAGAAGACCCACGAGAAGGAGAAAAGCTACGCGCTGGGGGGCGCCCGGGGCCCAACCGTCCAC
 CCGGAAGCCAGCGGGGGCTAGGGCGGGCGGTCCCCAGAGAGCGTGGAGGGCAGGCTCCCCCGCA
 CCCCAGAGGCGCAGAGG

ACGCGTACGCGGGCGCTCGAGCAGAAACTCATCTCAGAAGAGGATCTGGCAGCAAATGATATCCTGGATT
 ACAAGGATGACGACGATAAGGTTTAA

Protein Sequence:

>RC227481 representing NM_001145542
 Red=Cloning site Green=Tags(s)

MRRVGGRADEDATAAGSLWVLAPEPTGHLVIPGTSPLPPCPWLDHIFQCRFGKMLPLEKAFASPRSS
 PAPPDLTPGSAAGVQEEPETIPERTPADLEFSRLRFREFVYQEAAGPHQTLARLHELRCRQWLMPEARS
 KEQMLELLVLEQFLGILPDKVRPWVVAQYVESCKKAASLVEGLADVLEEPGMLLGSAPGSSSILSDGVYE
 RHMDPLLLPGELASPSQALGAGEIPAPSETPWLPDPLFLEQRRVREAKTEEDGPANTEQKLSFPEDPQ
 HLGEGWHLDPAEENLKSyrKLLWGYQLSQPDAASRLDTEELRLVERDPQGSSLPEGRRRQESAGCACEE
 AAPAGVLPPELPTAPPGDALADPPSGTTEEEEEQPGKAPDPQDPDAESDSATGSQRQSVIQQPAPDRGT
 AKLGTKRPHPEDGDGQSLQEGVSSSGDSAGLEAGQGPDAEPGLSRGKPYACGECGEAFAWLSHLMHHSS
 HGGRRKRYACQGCWKTFFHSLALAEHQKTHEKEKSYALGGARGPQPSTREAQAGARAGGPPEVEGEAPPA
 PPEAQR

TRTRPLEQKLISEEDLAANDILDYKDDDDKV

Chromatograms:

https://cdn.origene.com/chromatograms/mk8067_f06.zip

Restriction Sites:

Sgfl-Mlul

Cloning Scheme:

ACCN: NM_001145542

ORF Size: 1698 bp

OTI Disclaimer: The molecular sequence of this clone aligns with the gene accession number as a point of reference only. However, individual transcript sequences of the same gene can differ through naturally occurring variations (e.g. polymorphisms), each with its own valid existence. This clone is substantially in agreement with the reference, but a complete review of all prevailing variants is recommended prior to use. [More info](#)
OTI Annotation: This clone was engineered to express the complete ORF with an expression tag. Expression varies depending on the nature of the gene.

Components: The ORF clone is ion-exchange column purified and shipped in a 2D barcoded Matrix tube containing 10ug of transfection-ready, dried plasmid DNA (reconstitute with 100 ul of water).

- Reconstitution Method:**
1. Centrifuge at 5,000xg for 5min.
 2. Carefully open the tube and add 100ul of sterile water to dissolve the DNA.
 3. Close the tube and incubate for 10 minutes at room temperature.
 4. Briefly vortex the tube and then do a quick spin (less than 5000xg) to concentrate the liquid at the bottom.
 5. Store the suspended plasmid at -20°C. The DNA is stable for at least one year from date of shipping when stored at -20°C.

RefSeq: [NM_001145542.1](#), [NP_001139014.1](#)
RefSeq ORF: 1701 bp

Locus ID: 65982

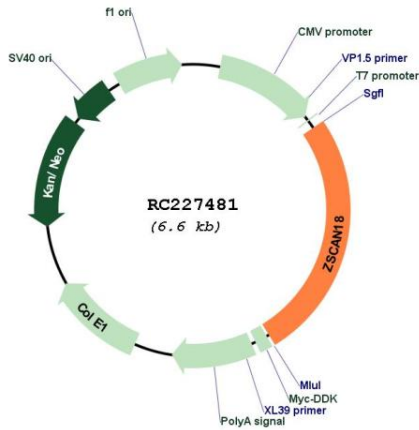
UniProt ID: [Q8TBC5](#)
Cytogenetics: 19q13.43

Protein Families: Transcription Factors

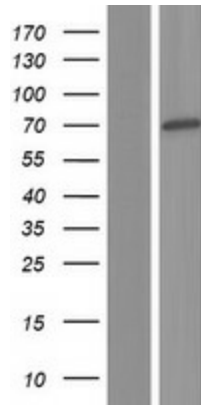
MW: 60.6 kDa

Gene Summary: May be involved in transcriptional regulation.[UniProtKB/Swiss-Prot Function]

Product images:



Circular map for RC227481



Western blot validation of overexpression lysate (Cat# [LY428933]) using anti-DDK antibody (Cat# [TA50011-100]). Left: Cell lysates from untransfected HEK293T cells; Right: Cell lysates from HEK293T cells transfected with RC227481 using transfection reagent MegaTran 2.0 (Cat# [TT210002]).