

Product datasheet for **RC227480**

ZMAT4 (NM_001135731) Human Tagged ORF Clone

Product data:

Product Type: Expression Plasmids
Product Name: ZMAT4 (NM_001135731) Human Tagged ORF Clone
Tag: Myc-DDK
Symbol: ZMAT4
Mammalian Cell Selection: Neomycin
Vector: pCMV6-Entry (PS100001)
E. coli Selection: Kanamycin (25 ug/mL)
ORF Nucleotide Sequence: >RC227480 representing NM_001135731
Red=Cloning site Blue=ORF Green=Tags(s)

TTTTGTAATACGACTCACTATAGGGCGGCCGGAATTCGTCGACTGGATCCGGTACCGAGGAGATCTGCC
GCC**CGATCGCC**

ATGAAGTCCTCCGATATTGATCAGGATTTATTCACAGACAGTTACTGCAAGGTGTGCAGTGCACAGCTGA
TCTCCGAATCGCAGCGTGTGGCCCACTACGAGAGTCGAAAACATGCAAGCAAAGTCCGACTGTATTACAT
GCTTACACCCAGGGATGGAGGGTGTCTGCAAGAGGCTCCGGTCAGAAAATGGAAGTGATGCCGACATG
GTGGATAAGAACAAGTGTGCACACTCTGCAACATGTCACTTCACTTCAGCGGTGGTGGCCGATCCCATT
ATCAAGGCAAAATCCACGCCAAGAGGTTAAAACCTTTGCTAGGAGAGAAGACCCATTAAAGACCACAGG
TCTGAGGCGCAATTACAGATGTCCATCTGCAGTGTCTCCCTAAACTCAATAGAACAGTATCATGCCCAT
CTGAAAGGATCTAAACACCAGACCAACCTGAAGAATAAG

ACGCGTACGCGGCCGCTCGAGCAGAACTCATCTCAGAAGAGGATCTGGCAGCAAATGATATCCTGGATT
ACAAGGATGACGACGATAAGGTTTAA

Protein Sequence: >RC227480 representing NM_001135731
Red=Cloning site Green=Tags(s)

MKSSDIDQDLFTDSYCKVCSAQLISESQRVAHYESRKHASKVRLYYMLHPRDGGCPAKRLRSENGSDADM
VDKNKCTLCNMSFTSAVVADSHYQGIHAKRLKLLGKLTPLKTTGLRRNYRCAICSVLSNIEQYHAH
LKGSKHQTNLKNK

TRTRPLEQKLISEEDLAANDILDYKDDDDKV

Chromatograms: https://cdn.origene.com/chromatograms/ja1452_c05.zip

Restriction Sites: SgfI-MluI



[View online »](#)

Cloning Scheme:


ACCN: NM_001135731

ORF Size: 459 bp

OTI Disclaimer: The molecular sequence of this clone aligns with the gene accession number as a point of reference only. However, individual transcript sequences of the same gene can differ through naturally occurring variations (e.g. polymorphisms), each with its own valid existence. This clone is substantially in agreement with the reference, but a complete review of all prevailing variants is recommended prior to use. [More info](#)

OTI Annotation: This clone was engineered to express the complete ORF with an expression tag. Expression varies depending on the nature of the gene.

Components: The ORF clone is ion-exchange column purified and shipped in a 2D barcoded Matrix tube containing 10ug of transfection-ready, dried plasmid DNA (reconstitute with 100 ul of water).

- Reconstitution Method:**
1. Centrifuge at 5,000xg for 5min.
 2. Carefully open the tube and add 100ul of sterile water to dissolve the DNA.
 3. Close the tube and incubate for 10 minutes at room temperature.
 4. Briefly vortex the tube and then do a quick spin (less than 5000xg) to concentrate the liquid at the bottom.
 5. Store the suspended plasmid at -20°C. The DNA is stable for at least one year from date of shipping when stored at -20°C.

RefSeq: [NM_001135731.1](#), [NP_001129203.1](#)

RefSeq ORF: 462 bp

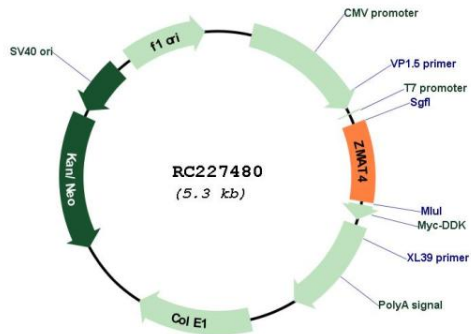
Locus ID: 79698

UniProt ID: [Q9H898](#)

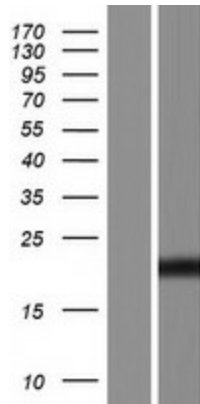
Cytogenetics: 8p11.21

MW: 17.2 kDa

Product images:



Circular map for RC227480



Western blot validation of overexpression lysate (Cat# [LY427686]) using anti-DDK antibody (Cat# [TA50011-100]). Left: Cell lysates from untransfected HEK293T cells; Right: Cell lysates from HEK293T cells transfected with RC227480 using transfection reagent MegaTran 2.0 (Cat# [TT210002]).