

Product datasheet for **RC227466**

ETS1 (NM_001143820) Human Tagged ORF Clone

Product data:

Product Type:	Expression Plasmids
Product Name:	ETS1 (NM_001143820) Human Tagged ORF Clone
Tag:	Myc-DDK
Symbol:	ETS1
Synonyms:	c-ets-1; ETS-1; EWSR2; p54
Mammalian Cell Selection:	Neomycin
Vector:	pCMV6-Entry (PS100001)
E. coli Selection:	Kanamycin (25 ug/mL)



[View online »](#)

ORF Nucleotide Sequence:

>RC227466 representing NM_001143820
 Red=Cloning site Blue=ORF Green=Tags(s)

TTTTGTAATACGACTCACTATAGGGCGGCCGGAATTCGTCGACTGGATCCGGTACCGAGGAGATCTGCC
 GCC**CGCATCGCC**

ATGAGCTACTTTGTGGATTCTGCTGGGAGCAGCCCGTCCCTTACTCAGCGCCTCGTCTGCAGTGGTGA
 GGCAAGGACCTAGCAACTTATGAAGATCCTCGAATGAACTGTGGTTTCCAGTCCAATTATCACCAGCA
 AAGACCTTGCTACCCCTTTGGGATGAGATGGCAACTCAGGAAGTTCTACTGGTCTTGAACACTGTGTC
 TCAGATATGGAATGTGCAGATGTCCACTATTAAGTCCAAGCAGCAAAGAAATGATGTCTCAAGCATTAA
 AAGCTACTTTTCAGTGGTTTCACTAAAGAACAGCAACGACTGGGGATCCCAAAAGACCCCCGGCAGTGGAC
 AGAAACCCATGTTCCGGACTGGGTGATGTGGGCTGTGAATGAATTCAGCCTGAAAGGTGTAGACTCCAG
 AAGTTCTGTATGAATGGAGCAGCCCTCTGCGCCCTGGGTAAGACTGCTTCTCGAGCTGGCCCCAGACT
 TTGTTGGGACATCTTATGGGAACATCTAGAGATCCTGCAGAAAGAGGATGTGAAACCATATCAAGTTAA
 TGGAGTCAACCCAGCCTATCCAGAATCCCGCTATACCTCGGATTACTTCATTAGCTATGGTATTGAGCAT
 GCCCAGTGTGTTCCACCATCGGAGTTCTCAGAGCCCAGCTTCATCACAGAGTCTATCAGACGCTCCATC
 CCATCAGCTCGGAAGAGCTCCTCTCCCTCAAGTATGAGAATGACTACCCCTCGGTCAATTCTCCGAGACCC
 TCTCCAGACAGACACCTTGCAGAATGACTACTTTGCTATCAAACAAGAAGTCGTACCCCCAGACAACATG
 TGCATGGGGAGGACCAGTCGTGGTAAACTCGGGGGCCAGGACTCTTTGAAAGCATAGAGAGCTACGATA
 GTTGTGATCGCCTCACCCAGTCTGGAGCAGCCAGTCACTTTCAACAGCCTGCAGCGTGTTCCTCCTA
 TGACAGCTTCGACTCAGAGGACTATCCGGCTGCCCTGCCAACCAAGCCCAAGGGCACCTTCAAGGAC
 TATGTCCGGGACCGTGTGACCTCAATAAGGACAAGCCTGTATTCTCTGCTGCTGCCCTAGCTGGCTACA
 CAGGCAGTGGACCAATCCAGCTATGGCAGTTTCTTCTGGAATTACTCACTGATAAATCGTCACTCTTT
 TATCAGCTGGACAGGAGATGGCTGGGAATTCAAACTTTCTGACCCAGATGAGGTGGCCAGGAGATGGGGA
 AAGAGGAAAAACAACTAAGATGAATTATGAGAACTGAGCCGTGGCCTACGCTACTATTACGACAAAA
 ACATCATCCACAAGACAGCGGGAAACGCTACGTGTACCGCTTTGTGTGACCTGCAGAGCCTGTGGG
 GTACACCCCTGAGGAGCTGCACGCCATGCTGGACGTCAAGCCAGATGCCGACGAG

ACGCGTACGCGGCCGCTCGAGCAGAAACTCATCTCAGAAGAGGATCTGGCAGCAAATGATATCCTGGATT
 ACAAGGATGACGACGATAAGGTTTAA

Protein Sequence:

>RC227466 representing NM_001143820
 Red=Cloning site Green=Tags(s)

MSYFVDSAGSSPVYPYSAPRPAVVRQGPSNTYEDPRMNCGFQSNYHQRPCYPFWDEMATQEVPVTPGLEHCV
 SDMECADVPLLTPSSKEMMSQALKATFSGFTKEQQRLGIPKDPRQWTETHVRDWMWAVNEFSLKGVDFQ
 KFCMNGAALCALGKDCFLELAPDFVGDILWEHLEILQKEDVKPYQVNGVNPAYPESRYTSDYFISYGIEH
 AQCVPPESEFSEPSFITESYQTLHPISSEELLSLKYENDYPSVILRDPLQDTLQNDYFAIKQEVVTPDNM
 CMGRTSRGLGGQDSFESIESYDSCDRLTQSWSSQSSFNSLQRVPSYDSFDSYPAALPNHKPKGTFKD
 YVRDRADLNKDKPVIPAAALAGYTGSGPIQLWQFLLELLTDKSCQSFISWTGDGWEFKLSDPDEVARRWG
 KRKNPKMNYEKL SRGLRYYDKNI IHKTAGKRYVYRFVCDLQSLGYPPEELHAML DVKPDADA

TRTRPLEQKLI SEEDLAANDILDYKDDDDKV

Chromatograms:

https://cdn.origene.com/chromatograms/ja1788_e01.zip

Restriction Sites:

Sgfl-Mlul

Cloning Scheme:


ACCN: NM_001143820

ORF Size: 1455 bp

OTI Disclaimer: The molecular sequence of this clone aligns with the gene accession number as a point of reference only. However, individual transcript sequences of the same gene can differ through naturally occurring variations (e.g. polymorphisms), each with its own valid existence. This clone is substantially in agreement with the reference, but a complete review of all prevailing variants is recommended prior to use. [More info](#)

OTI Annotation: This clone was engineered to express the complete ORF with an expression tag. Expression varies depending on the nature of the gene.

Components: The ORF clone is ion-exchange column purified and shipped in a 2D barcoded Matrix tube containing 10ug of transfection-ready, dried plasmid DNA (reconstitute with 100 ul of water).

Reconstitution Method:

1. Centrifuge at 5,000xg for 5min.
2. Carefully open the tube and add 100ul of sterile water to dissolve the DNA.
3. Close the tube and incubate for 10 minutes at room temperature.
4. Briefly vortex the tube and then do a quick spin (less than 5000xg) to concentrate the liquid at the bottom.
5. Store the suspended plasmid at -20°C. The DNA is stable for at least one year from date of shipping when stored at -20°C.

RefSeq: [NM_001143820.2](#)

RefSeq ORF: 1458 bp

Locus ID: 2113

UniProt ID: [P14921](#)

Cytogenetics: 11q24.3

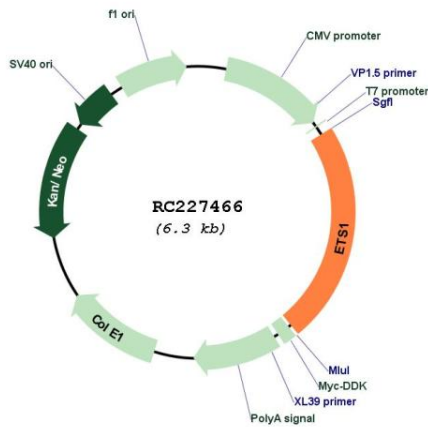
Protein Families: Druggable Genome, Transcription Factors

Protein Pathways: Dorso-ventral axis formation, Pathways in cancer, Renal cell carcinoma

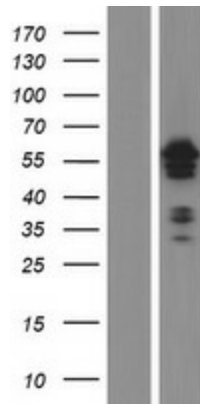
MW: 55.2 kDa

Gene Summary: This gene encodes a member of the ETS family of transcription factors, which are defined by the presence of a conserved ETS DNA-binding domain that recognizes the core consensus DNA sequence GGAA/T in target genes. These proteins function either as transcriptional activators or repressors of numerous genes, and are involved in stem cell development, cell senescence and death, and tumorigenesis. Alternatively spliced transcript variants encoding different isoforms have been described for this gene.[provided by RefSeq, Jul 2011]

Product images:



Circular map for RC227466



Western blot validation of overexpression lysate (Cat# [LY428365]) using anti-DDK antibody (Cat# [TA50011-100]). Left: Cell lysates from untransfected HEK293T cells; Right: Cell lysates from HEK293T cells transfected with RC227466 using transfection reagent MegaTran 2.0 (Cat# [TT210002]).