

## Product datasheet for RC227461

### LRRC10B (NM\_001145077) Human Tagged ORF Clone

#### Product data:

Product Type:	Expression Plasmids
Product Name:	LRRC10B (NM_001145077) Human Tagged ORF Clone
Tag:	Myc-DDK
Symbol:	LRRC10B
Mammalian Cell Selection:	Neomycin
Vector:	pCMV6-Entry (PS100001)
E. coli Selection:	Kanamycin (25 ug/mL)
ORF Nucleotide Sequence:	>RC227461 representing NM_001145077 Red=Cloning site Blue=ORF Green=Tags(s)

TTTTGTAATACGACTCACTATAGGGCGGCCGGAATTCGTCGACTGGATCCGGTACCGAGGAGATCTGCCGCCGCGATCGCC

ATGGGCATCGCCGAGTCCACGCCGATGAGCTGCCGTGGACGCAGAGGAGCAGCTGCGCAGCGCGACC  
AGCAGCTGGAGCTGAGCGGGCGCGGTTGCGGCGGCTGCCAGCGCAGTGTGCGCGCTGAGCCGCTGCA  
GAAGCTGTATGTGAGCGGCACGGGGCTGCGCGAGCTGCCGAGGAGATCGAGGAGCTGCGCGAGCTGCGC  
ATCCTGGCGCTGGACTTCAACAAGCTCGAGCGACTGCTGACGGCCTGTGCCGCTGCCGCGCCTCACGC  
GCCTCTATCTGGCGGCAACCGGCTGCTGGCGCTGCCCGCGACTTCGCGCAGTTGCAGAGCCTGCGCTG  
CCTCTGGATCGAGGGCAACTTCTTGGCGGCTTCCCGCGCGCTGCTGCGCCTGGTGGCGCTGCAGTCG  
CTCCAGATGGGCGACAACCGGCTGCGCGCGCTGCCGCGGAGCTGCCGCGCATGACGGGCTTGGCGGCC  
TCTGGCTACGGCAACCGCTTCGAGGAGTTCCCGCCGCGCTGCTGCGCATGGGCGCCTGCACATCCT  
CGACCTCGACCGCAACCGCTGGGCGGCTTCCCGACCTGCACCCGCTGCGCGCGCTGCGCGTCTTCTCC  
TACGACCACAACCCGTCACCGGCCCGCGCGTTCGCGGACACCGTGTTCCTCGTGGGCGAGGGCGCCG  
TCGAGCGCATGGCGGAGCGGACGAGCCACGCCCGGCTCCGCCCCGGCGCCAGCGCGGGCCTTTGA  
GGATGAGGAGGAGGAAGACCTGCTCATAGGCGGCGCTGGTTCCCGGGCTCTGGGCGCCCCGGGGCAGC  
TTCCGCGCCTGGAAGCCGCTCCAGGACTGGGCACC

ACGCGTACGCGGCCGCTCGAGCAGAACTCATCTCAGAAGAGGATCTGGCAGCAAATGATATCCTGGATT  
ACAAGGATGACGACGATAAGGTTTAA



[View online »](#)

**Protein Sequence:** >RC227461 representing NM\_001145077  
Red=Cloning site Green=Tags(s)

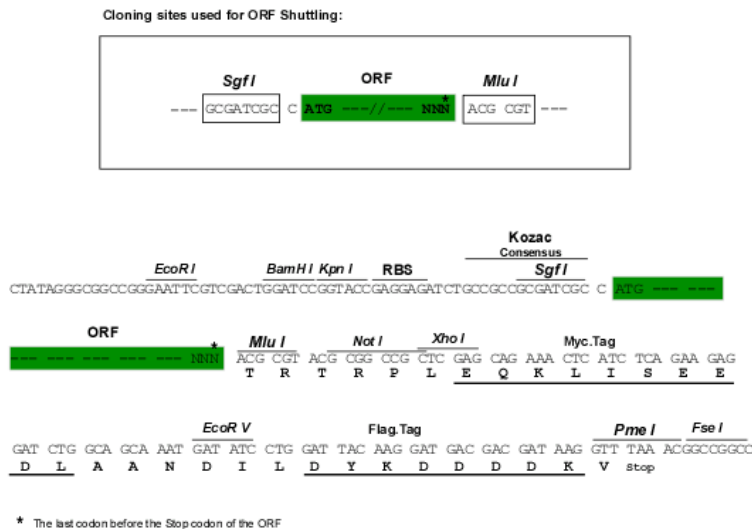
MGIAESTPDELPSDAEEQLRSGDQQLLESGRRLRRLPSAVCALSRQLKLYVSGTGLRELPEEIEELRELRL  
 ILALDFNKLRLPDGLCRLPRLTRLYLGGNRLALPADFAQLQSLRCLWIEGNLRRFPRPLRLVALQS  
 LQMGDNRLRALPAELPRMTGLRGLWL YGNRFEEFPALLRMGRLHILDLDNRNLGGFPDLHPLRALRVFS  
 YDHNPTVGPPRVADTVFLVGE GAVERMAERDEPTPRPPRRPARAFEDEEEEDLLIGGAGSRALGAPGGS  
 FRALEAAPGLGT

TRTRPLEQKLISEEDLAANDILDYKDDDDKV

**Chromatograms:** [https://cdn.origene.com/chromatograms/mk8037\\_h03.zip](https://cdn.origene.com/chromatograms/mk8037_h03.zip)

**Restriction Sites:** SgfI-MluI

**Cloning Scheme:**



**ACCN:** NM\_001145077

**ORF Size:** 876 bp

**OTI Disclaimer:** The molecular sequence of this clone aligns with the gene accession number as a point of reference only. However, individual transcript sequences of the same gene can differ through naturally occurring variations (e.g. polymorphisms), each with its own valid existence. This clone is substantially in agreement with the reference, but a complete review of all prevailing variants is recommended prior to use. [More info](#)

**OTI Annotation:** This clone was engineered to express the complete ORF with an expression tag. Expression varies depending on the nature of the gene.

**Components:** The ORF clone is ion-exchange column purified and shipped in a 2D barcoded Matrix tube containing 10ug of transfection-ready, dried plasmid DNA (reconstitute with 100 ul of water).

- Reconstitution Method:**
1. Centrifuge at 5,000xg for 5min.
  2. Carefully open the tube and add 100ul of sterile water to dissolve the DNA.
  3. Close the tube and incubate for 10 minutes at room temperature.
  4. Briefly vortex the tube and then do a quick spin (less than 5000xg) to concentrate the liquid at the bottom.
  5. Store the suspended plasmid at -20°C. The DNA is stable for at least one year from date of shipping when stored at -20°C.

**RefSeq:** [NM\\_001145077.2](#)

**RefSeq ORF:** 879 bp

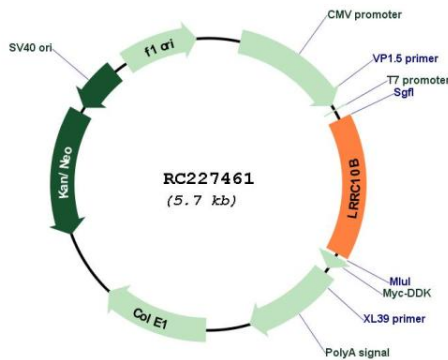
**Locus ID:** 390205

**UniProt ID:** [A6NIK2](#)

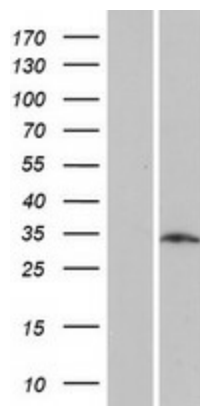
**Cytogenetics:** 11q12.2

**MW:** 32.5 kDa

**Product images:**



Circular map for RC227461



Western blot validation of overexpression lysate (Cat# [LY428676]) using anti-DDK antibody (Cat# [TA50011-100]). Left: Cell lysates from untransfected HEK293T cells; Right: Cell lysates from HEK293T cells transfected with RC227461 using transfection reagent MegaTran 2.0 (Cat# [TT210002]).