

Product datasheet for RC227455

PRELID3A (NM_001142406) Human Tagged ORF Clone

Product data:

Product Type: Expression Plasmids
Product Name: PRELID3A (NM_001142406) Human Tagged ORF Clone
Tag: Myc-DDK
Symbol: PRELID3A
Synonyms: C18orf43; HFL-EDDG1; SLMO1
Mammalian Cell Selection: Neomycin
Vector: pCMV6-Entry (PS100001)
E. coli Selection: Kanamycin (25 ug/mL)
ORF Nucleotide Sequence: >RC227455 representing NM_001142406
Red=Cloning site Blue=ORF Green=Tags(s)

TTTGTAAATACGACTCACTATAGGGCGCCGGAATTCGTCGACTGGATCCGGTACCGAGGAGATCTGCC
GCC**CGATCGCC**

ATGAAGATCTGGAGCTCGGAGCACGTGTTGGCCACCCGTGGGACACGGTCATCCAGGCGGCCATGCGCA
AGTACCCGAACCCGATGAACCCGAGCGTCTGGCGTGGATGTGTACAGCGCCGCTGGACGGCCGCGG
CCGCTGCACAGCTTGCCTGCTCAGCACCGAGTGGGGCTGCCAGCCTCGTGAGAGCGATTTGGGA
ACCAAGTAGGACATTGACATACATCCGAGAATCTGTGGTGGATCCAGTGGAAAAGAAAATGGAACCTT
GTTCTACCAATATCACACTCACAATTTGGTGTGAGTAAATGAGAGGTTGGTGTACACACCTCATCCAGA
GAACCCAGAAATGACCGTCTCACACAAGAAGCCATCACTGTGAAGGGGATTAGCCTTGGTAGTTAT
TTGAAAAGTTAATGGCCAATACGATATCATCCAATGCAAAGAAGGGGTGGGCTGCTATCGAGTGGATAA
TTGAACACTCTGAAAGCGCTGTGAGC

ACGCGTACGCGGCCGCTCGAGCAGAACTCATCTCAGAAGAGGATCTGGCAGCAAATGATATCCTGGATT
ACAAGGATGACGACGATAAGGTTTAA

Protein Sequence: >RC227455 representing NM_001142406
Red=Cloning site Green=Tags(s)

MKIWSSEHFVGHWPDTVIQAAMRYPNPMNPSVLGVDVLQRRVDGRRLHSLRLLSTEWGLPSLVRAILG
TSRTLTYIREHSVVDPEVKMELCSTNITLNLVSVNERLVYTPHPENPEMTVLQEAIIIVKGISLGSY
LESLMANTISSNAKKGWAAIEWIIEHSESAVS

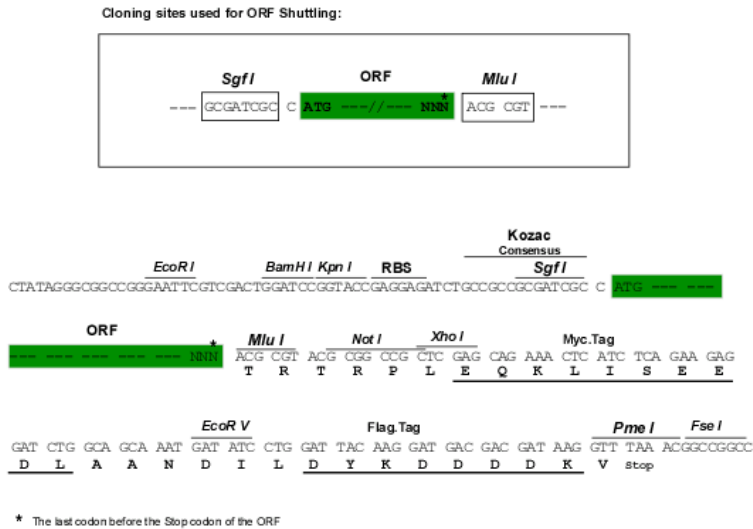
TRTRPLEQKLISEEDLAANDILDYKDDDDKV

Chromatograms: https://cdn.origene.com/chromatograms/ja1456_a04.zip



Restriction Sites: SgfI-MluI

Cloning Scheme:



ACCN: NM_001142406

ORF Size: 516 bp

OTI Disclaimer: The molecular sequence of this clone aligns with the gene accession number as a point of reference only. However, individual transcript sequences of the same gene can differ through naturally occurring variations (e.g. polymorphisms), each with its own valid existence. This clone is substantially in agreement with the reference, but a complete review of all prevailing variants is recommended prior to use. [More info](#)

OTI Annotation: This clone was engineered to express the complete ORF with an expression tag. Expression varies depending on the nature of the gene.

Components: The ORF clone is ion-exchange column purified and shipped in a 2D barcoded Matrix tube containing 10ug of transfection-ready, dried plasmid DNA (reconstitute with 100 ul of water).

Reconstitution Method:

1. Centrifuge at 5,000xg for 5min.
2. Carefully open the tube and add 100ul of sterile water to dissolve the DNA.
3. Close the tube and incubate for 10 minutes at room temperature.
4. Briefly vortex the tube and then do a quick spin (less than 5000xg) to concentrate the liquid at the bottom.
5. Store the suspended plasmid at -20°C. The DNA is stable for at least one year from date of shipping when stored at -20°C.

RefSeq ORF: 456 bp

Locus ID: 10650

UniProt ID: [Q96N28](#)

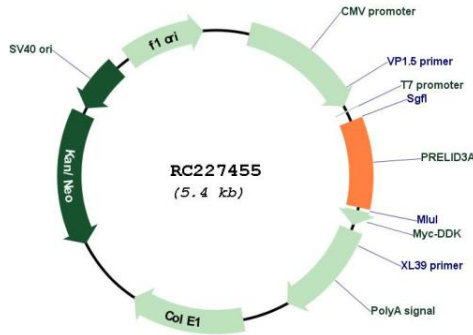
Cytogenetics: 18p11.21

MW: 19.25 kDa

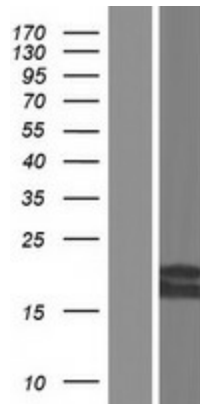
Gene Summary:

In vitro, the TRIAP1:PRELID3A complex mediates the transfer of phosphatidic acid (PA) between liposomes and probably functions as a PA transporter across the mitochondrion intermembrane space. Phosphatidic acid import is required for cardiolipin (CL) synthesis in the mitochondrial inner membrane.[UniProtKB/Swiss-Prot Function]

Product images:



Circular map for RC227455



Western blot validation of overexpression lysate (Cat# [LY428073]) using anti-DDK antibody (Cat# [TA50011-100]). Left: Cell lysates from untransfected HEK293T cells; Right: Cell lysates from HEK293T cells transfected with RC227455 using transfection reagent MegaTran 2.0 (Cat# [TT210002]).