

Product datasheet for RC227452

ZNF566 (NM_001145344) Human Tagged ORF Clone

Product data:

Product Type:	Expression Plasmids
Product Name:	ZNF566 (NM_001145344) Human Tagged ORF Clone
Tag:	Myc-DDK
Symbol:	ZNF566
Mammalian Cell Selection:	Neomycin
Vector:	pCMV6-Entry (PS100001)
E. coli Selection:	Kanamycin (25 ug/mL)
ORF Nucleotide Sequence:	>RC227452 ORF sequence Red=Cloning site Blue=ORF Green=Tags(s)

TTTTGTAATACGACTCACTATAGGGCGGCCGGAATTCGTCGACTGGATCCGGTACCGAGGAGATCTGCC
GCC**CGATCGCC**

ATGGCTCAGGAGTCAGTGATGTTTCAGTGATGTGTCCGTAGACTTCTCTCAGGAGGAGTGGGAATGCCTGA
ATGATGATCAGAGAGATTTATACAGAGATGTGATGTTGGAGAATTACAGCAACCTGGTTTCAATGGGGCA
TTCTATTTCTAAACCAATGTGATCTCCTACTTGGAGCAAGGGAAGGAGCCCTGGTTGGCTGACAGAGAG
CTAACAAGAGGCCAGTGGCCAGTCTGGAATCAAGATGTGAGACCAAGAAATTATTTCTGAAGAAAGAAA
TTATGAAATAGAATCAACCCAGTGGGAAATAATGGAAAACTCACAAGACGTGATTTTCAGTGCTCCAG
TTTCAGAGATGATTGGGAATGTAATCGGCAGTTTAAGAAAGAACTCGGCTCTCAGGGGGACATTTCAAT
CAATTGGTATTCATCATGAAGATCTGCCCACTTTGAGTCACCATCCATCCTTCACATTACAGCAAATCA
TTAACAGTAAAAAGAAATCTGTGCATCTAAAGAATATAGGAAAACCTTTAGACATGGCTCACAGTTTGC
TACACATGAGATAATTCATACCATTTGAGAAGCCTTATGAATGTAAGGAATGTGGAAGTCCCTTTAGACAT
CCCTCAAGACTCACTCATCATCAGAAAATTCATACTGGCAAGAAACCTTTGAATGTAAGGAATGTGGAA
AAACCTTTATTTGTGGCTCAGACCTTACTCGACATCACAGAATTCACACTGGTGAGAAACCTATGAATG
TAAGGAATGTGGAAAGCCTTTAGTAGTGGTTCAAACCTCACTCGACATCAGAGAATTCACACAGGTGAG
AAGCCTTATGAATGCAAAGAATGCGGGAAGGCCTTTAGTAGTGGCTCAAACCTTACTCAACATCAGAGAA
TTCATACTGGGAAAAACCTATGAATGTAAGGAATGTGGCAATGCCTTTAGTCAGAGCTACAACCTTAT
TAAACATCAAAGAATCCATACAGGTGAGAAACCTTACGAATGTAAGGAATGTGAAAAGGCTTTTCGTCT
GGCTCAGACCTTACTAGACATCAGAGAATTCATACTGGGAGAAAACCTATGAATGTAAGATATGTGGGA
AGGCTTATTTCTCAGAGTTCACAGCTTATTAGTCATCATAGAATTCATACTAGTGAGAAAACCTATGAATA
TAGGGAATGTGGAAGAACTTTAATTATGACCCACAACCTATTTCAGCATCAAAATTTGTACTGG

ACGCGTACGCGGCCGCTCGAGCAGAAAACCTCATCTCAGAAGAGGATCTGGCAGCAAATGATATCCTGGATT
ACAAGGATGACGACGATAAGGTTTAA



[View online »](#)

Protein Sequence: >RC227452 protein sequence
Red=Cloning site Green=Tags(s)

MAQESVMFSDVSVDFSQEEWECLNDDQRDLYRDVMLENYSNLVSMGHSISKPNVISYLEQGKEPWLADRE
 LTRGQWPVLESRCETKKLFLKKEIYEIESTQWEIMEKL TRRDFQCSSFRRDDWECNRQFKKELGSQGGHFN
 QLVFTHEDLPTLSHHPSTLQQIINSKFKFCASKEYRKTFRHGSQFATHEIIHTIEKPYECKEKGKSFRRH
 PSRLTHHQKIHTGKKPFECKEKGKTFICGSDLTRHHRIHTGEKPYECKEKGKAFSSGSNFTRHQRIHTGE
 KPYECKEKGKAFSSGSNFTQHQRHTGEKPYECKEKGNAFSQSSQLIKHQRIHTGEKPYECKEKEKAFRS
 GSDLTRHQRIHTGEKPYECKICGKAYSQSSQLISHHRIHTSEKPYEYRECGKNFNYPQLIQHQLYW

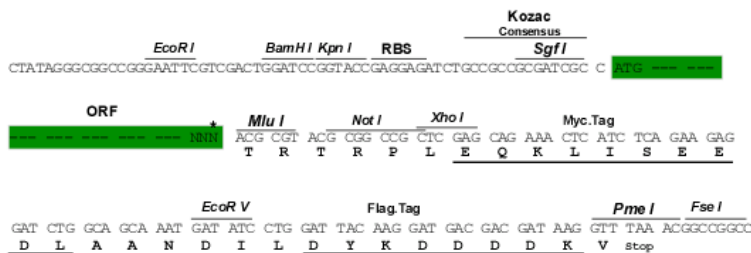
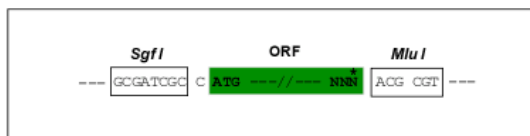
TRTRPLEQKLISEEDLAANDILDYKDDDDKV

Chromatograms: https://cdn.origene.com/chromatograms/mk6373_d01.zip

Restriction Sites: Sgfl-MluI

Cloning Scheme:

Cloning sites used for ORF Shuttling:



* The last codon before the Stop codon of the ORF

ACCN: NM_001145344

ORF Size: 1254 bp

OTI Disclaimer: The molecular sequence of this clone aligns with the gene accession number as a point of reference only. However, individual transcript sequences of the same gene can differ through naturally occurring variations (e.g. polymorphisms), each with its own valid existence. This clone is substantially in agreement with the reference, but a complete review of all prevailing variants is recommended prior to use. [More info](#)

OTI Annotation: This clone was engineered to express the complete ORF with an expression tag. Expression varies depending on the nature of the gene.

Components: The ORF clone is ion-exchange column purified and shipped in a 2D barcoded Matrix tube containing 10ug of transfection-ready, dried plasmid DNA (reconstitute with 100 ul of water).

Reconstitution Method:

1. Centrifuge at 5,000xg for 5min.
2. Carefully open the tube and add 100ul of sterile water to dissolve the DNA.
3. Close the tube and incubate for 10 minutes at room temperature.
4. Briefly vortex the tube and then do a quick spin (less than 5000xg) to concentrate the liquid at the bottom.
5. Store the suspended plasmid at -20°C. The DNA is stable for at least one year from date of shipping when stored at -20°C.

RefSeq: [NM_001145344.1](#), [NP_001138816.1](#)

RefSeq Size: 5250 bp

RefSeq ORF: 1257 bp

Locus ID: 84924

UniProt ID: [Q969W8](#)

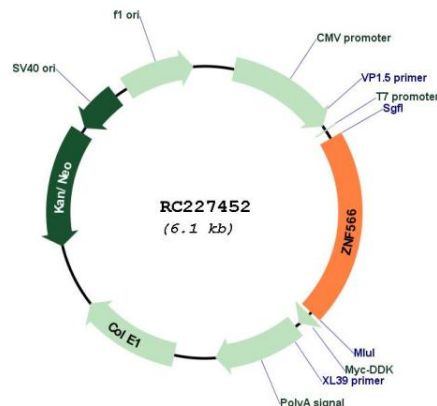
Cytogenetics: 19q13.12

Protein Families: Transcription Factors

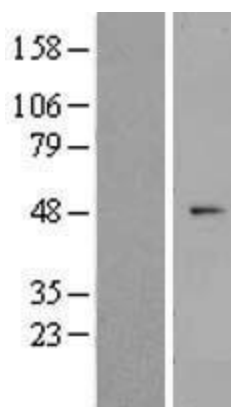
MW: 49.2 kDa

Gene Summary: May be involved in transcriptional regulation.[UniProtKB/Swiss-Prot Function]

Product images:



Circular map for RC227452



Western blot validation of overexpression lysate (Cat# [LY428832]) using anti-DDK antibody (Cat# [TA50011-100]). Left: Cell lysates from untransfected HEK293T cells; Right: Cell lysates from HEK293T cells transfected with [RC227547] using transfection reagent MegaTran 2.0 (Cat# [TT210002]).