

## Product datasheet for **RC227443**

### **NELL2 (NM\_001145107) Human Tagged ORF Clone**

#### **Product data:**

Product Type:	Expression Plasmids
Product Name:	NELL2 (NM_001145107) Human Tagged ORF Clone
Tag:	Myc-DDK
Symbol:	NELL2
Synonyms:	NRP2
Mammalian Cell Selection:	Neomycin
Vector:	pCMV6-Entry (PS100001)
E. coli Selection:	Kanamycin (25 ug/mL)



[View online »](#)

ORF Nucleotide  
Sequence:

>RC227443 representing NM\_001145107  
Red=Cloning site Blue=ORF Green=Tags(s)

TTTTGTAATACGACTCACTATAGGGCGGCCGGGAATTCGTCGACTGGATCCGGTACCGAGGAGATCTGCC  
GCC**CGGATCGCC**

ATGGGCTTCCCTCCTTTGCTTAAAGGGCAGGCGAGCGCTACTCGTCCAGCCTTGCTCCTGCAGCTGGG  
TGGTCTTTTTTCTCCTGTCTTTCAAGACACGCGCCGAAATCGAGGGAGGAGACGATGGACTGAGCT  
GATCCGCACCATGGAGTCTCGGGTCTTACTGAGAACATTCTGTTTGATCTTCGGTCTCGGAGCAGTTTGG  
GGGCTTGGTGTGGACCCTTCCCTACAGATTGACGTCTTAACAGAGTTAGAAGTTGGGGAGTCCACGACCG  
GAGTGCCTCAGGTCCCGGGGCTGCATAATGGGACGAAAGCCTTTCTTTCAAGATACTCCAGAAGCAT  
AAAAGCATCCACTGCTACAGCTGAACAGTTTTTTCAGAAGCTGAGAAATAAACATGAATTTACTATTTTG  
GTGACCCTAAAACAGACCCTTAAATTCAGGAGTTATTCTCTCAATTCACCACTGGATCACAGGTACC  
TGGAACTGGAAAGTAGTGCCATCGGAATGAAGTCAGACTGCATTACCGCTCAGGCAGTCACCGCCCTCA  
CACAGAAGTGTTTCTTACATTTTGGCTGATGACAAGTGGCACAAGCTCTCCTTAGCCATCAGTGCTTCC  
CATTTGATTTTACACATTGACTGCAATAAAATTTATGAAAGGGTAGTAGAAAAGCCCTCCACAGACTTGC  
CTCTAGGCACAACATTTTGGCTAGGACAGAGAAATAATGCGCATGGATATTTTAAAGGTATAATGAAGA  
TGTCCAATTACTTGTGCATGCCCCAGGGATTTATTGCTCAGTGCCAGATCTTAATCGCACCTGTCCAAC  
TGCAATGACTTCCATGGACTTGTGCAGAAAATCATGGAGCTACAGGATATTTTAGCCAAAACATCAGCCA  
AGCTGTCTCGAGCTGAACAGCGAATGAATAGATTGGATCAGTGCTATTGTGAAAGGACTTGACCCATGAA  
GGGAACCACTACCGAGAATTTGAGTCTGGATAGACGGCTGAAGAAGTGCACATGCCTGAATGGAACC  
ATCCAGTGTGAACTCTAATCTGCCAAATCTGACTGCCACTTAAGTCGGCTCTTGCATGTGGATG  
GCAAACTGCTGAAGGAATGCAAAATCGAATGCAAAATTTCAAGGACGAACCTACTTTGAAGGAGAAAGAA  
TACAGTCTATTCCTCTTCTGGAGTAGTGTCTCTATGAGTGAAGGACCAAGCCATGAAAATTTGTTGAG  
AGTTCAGGCTGTCCAGCTTTGGATTGTCCAGAGTCTCATCAGATAACCTTGTCTCACAGCTGTTGCAAA  
TTTGTAAGGTTATGACTTTTGTCTGAAAGGCATAAATGCATGGAGAATCCATCTGCAGAAATCTGAA  
TGACAGGGCTGTTGTAGCTGTGAGATGGTTTTAGGGCTCTTCGAGAGGATAATGCCTACTGTGAAGAC  
ATCGATGAGTGTGCTGAAGGGGCCATTACTGTCGTGAAAATACAATGTGTGCAACACCCCGGTTCTT  
TTATGTGCATCTGCAAACTGGATACATCAGAATTGATGATTATCATGTACAGAACATGATGAGTGTAT  
CACAAATCAGCACAATGTGATGAAAATGCTTTATGCTTCAACACTGTTGGAGGACACAATGTGTTTGC  
AAGCCGGCTATACAGGGAATGGAACGACATGCAAGCATTGCAAGATGGCTGTAGGAATGGAGGAG  
CCTGTATTGCCGCTAATGTGTGCTGCCACAAAGGCTTCACTGGACCCAGCTGTGAAACGGACATTGA  
TGAATGCTCTGATGGTTTTGTTCAATGTGACAGTCGTGCTAATTGCATTAACCTGCCTGGATGGTACCAC  
TGTGAGTGCAGAGATGGCTACCATGACAATGGGATGTTTTACCAAGTGGAGAATCGTGTGAAGATTTG  
ATGAGTGTGGGACCGGGAGGCACAGCTGTGCCAATGATACCATTGCTTCAATTTGGATGGCGGATATGA  
TTGTGATGTCTCATGGAAAGAATTGCACAGGGGACTGCATCCATGATGGAAAAGTTAAGCACAATGGT  
CAGATTTGGGTGTTGGAAAATGACAGGTGCTCTGTGTGCTCATGTGAGATGGATTGCTTATGTGTGAG  
GGATGGTCTGTGACTGTGAGAAATCCACAGTTGATCTTTTTGCTGCCCTGAATGTGACCAAGGCTTAG  
TAGTCAGTGCCTCCATCAAAATGGGAAACTTTGTATAACAGTGGTGCACCTGGTCCAGAATTTGCA  
CAGTGCCGCTGCTTGAAGGGGAAGTTGATTGTTGGCCCTGCCTTGCCAGATGTGGAGTGTGAATTC  
GCATTCTCCAGAGAATGAGTGTGCCCCGCTGTGTCACAGACCCTTGGCAGGCTGACACCATCCGCAA  
TGACATACCAAGACTTGCCTGGACGAAATGAATGTGGTTCGCTTACCAGGCTCCTTGGATCAACAT  
GGCACTGAGTGTACTCTGCCAGTGAAGAATGGCCACATCTGTTGCTCAGTGGATCCACAGTGCCTTC  
AGGAACTG

**ACGGT**ACGCGGCCGCTCGAGCAGAACTCATCTCAGAAGAGGATCTGGCAGCAATGATATCCTGGATT  
ACAAGGATGACGACGATAAGGTTTAA

Protein Sequence: >RC227443 representing NM\_001145107  
 Red=Cloning site Green=Tags(s)

MGFPPLKQGASATRSSLASCSWVVFLLSCLSRHAPETIEGRRWTELIRTMESRVLLRTFCLIFGLGAVW  
 GLGVDPQLQIDVLELLESTTGVRQVPGLHNGTKAFLFQDTPRSIKASTATAEQFFQKLRNKHEFTIL  
 VTLKQTHLNSGVLSIHHLDRHYLELESSGHRNEVRLHYRSGSHRPHTVEFPIILADDKWHKLSLAISAS  
 HLILHIDCNKIYERVVEKPPSTDPLGTTFWLQQRNNAHG YFKGIMQDVQLLVMPQGFIAQCPDLNRTCPT  
 CNDFHGLVQKIMELQDILAKTSAKLSRAEQRMNRLDQCYCERTCTMKGTTYREFESWIDGCKNCTCLNGT  
 IQCETL ICPNPDCLKSALAYVDGKCKECKSICQFQGRTYFEGERN TVYSSSGVCLYECKDQTMKLV  
 SSGCPALDCPESHQITLSHSCCKVCKGYDFCSERHNCMENSICRNLNDRAVCSCRDFRALREDNAYCED  
 IDECAEGRHYCRENTMCVNTPGSFMCKTGYIRIDDYSCTEHECITNQHNCDENALCFNTVGGHNCVC  
 KPGYTGNGTTCKAFCKDGRNGGACIAANVCACPQGF TGPSCETDIDECSDFVQCD SRANCINLPGWYH  
 CECRDGYHDNGMFS P G E S C E D I D E C G T G R H S C A N D T I C F N L D G G Y D C R C P H G K N C T G D C I H D G K V K H N G  
 QIWLLENDRCVSCQNGFVMCRRMVDCENPTVDLFCPECDPRLSSQCLHQNGETLYNSGDTWVQNCQ  
 QCRCLQGEVDCWPLPCPDVECEFSILPENECCPRCVTDPCQADTIRNDITKTCLDEMNVVRF TGSSWIKH  
 GTECTLCQCKNGHICCSVDPQCLQEL

TRTRPLEQKLISEEDLAANDILDYKDDDDKV

Restriction Sites:

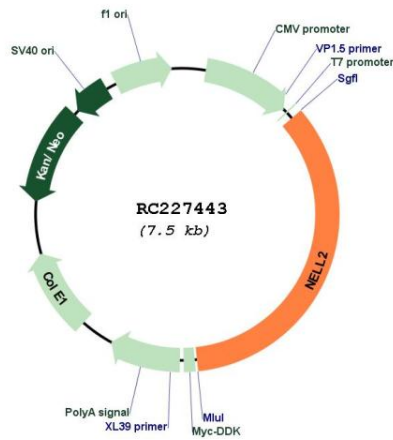
SgfI-MluI

Cloning Scheme:

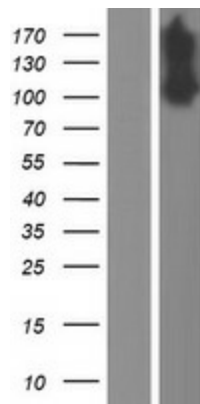


<b>ACCN:</b>	NM_001145107
<b>ORF Size:</b>	2598 bp
<b>OTI Disclaimer:</b>	The molecular sequence of this clone aligns with the gene accession number as a point of reference only. However, individual transcript sequences of the same gene can differ through naturally occurring variations (e.g. polymorphisms), each with its own valid existence. This clone is substantially in agreement with the reference, but a complete review of all prevailing variants is recommended prior to use. <a href="#">More info</a>
<b>OTI Annotation:</b>	This clone was engineered to express the complete ORF with an expression tag. Expression varies depending on the nature of the gene.
<b>Components:</b>	The ORF clone is ion-exchange column purified and shipped in a 2D barcoded Matrix tube containing 10ug of transfection-ready, dried plasmid DNA (reconstitute with 100 ul of water).
<b>Reconstitution Method:</b>	<ol style="list-style-type: none"><li>1. Centrifuge at 5,000xg for 5min.</li><li>2. Carefully open the tube and add 100ul of sterile water to dissolve the DNA.</li><li>3. Close the tube and incubate for 10 minutes at room temperature.</li><li>4. Briefly vortex the tube and then do a quick spin (less than 5000xg) to concentrate the liquid at the bottom.</li><li>5. Store the suspended plasmid at -20°C. The DNA is stable for at least one year from date of shipping when stored at -20°C.</li></ol>
<b>RefSeq:</b>	<a href="#">NM_001145107.1</a> , <a href="#">NP_001138579.1</a>
<b>RefSeq ORF:</b>	2601 bp
<b>Locus ID:</b>	4753
<b>UniProt ID:</b>	<a href="#">Q99435</a>
<b>Cytogenetics:</b>	12q12
<b>Protein Families:</b>	Secreted Protein, Transmembrane
<b>MW:</b>	96.7 kDa
<b>Gene Summary:</b>	The protein encoded by this gene is a glycoprotein containing several von Willebrand factor C domains and epidermal growth factor (EGF)-like domains. The encoded protein acts as a homotrimer and is found in the cytoplasm. Several variants encoding a few different isoforms exist, and at least one isoform appears to be a secreted protein. Studies in mouse suggest that this protein plays a role in neural cell growth and differentiation as well as in oncogenesis. [provided by RefSeq, Feb 2009]

Product images:



Circular map for RC227443



Western blot validation of overexpression lysate (Cat# [LY428694]) using anti-DDK antibody (Cat# [TA50011-100]). Left: Cell lysates from untransfected HEK293T cells; Right: Cell lysates from HEK293T cells transfected with RC227443 using transfection reagent MegaTran 2.0 (Cat# [TT210002]).