

Product datasheet for **RC227441**

ARMH1 (NM_001145636) Human Tagged ORF Clone

Product data:

Product Type:	Expression Plasmids
Product Name:	ARMH1 (NM_001145636) Human Tagged ORF Clone
Tag:	Myc-DDK
Symbol:	ARMH1
Synonyms:	C1orf228; NCRNA00082; p40
Mammalian Cell Selection:	Neomycin
Vector:	pCMV6-Entry (PS100001)
E. coli Selection:	Kanamycin (25 ug/mL)



[View online »](#)

ORF Nucleotide Sequence:

>RC227441 representing NM_001145636
 Red=Cloning site Blue=ORF Green=Tags(s)

TTTTGTAATACGACTCACTATAGGGCGGCCGGAATTCGTCGACTGGATCCGGTACCGAGGAGATCTGCC
 GCC**CGGATCGCC**

ATGACTTCTATAAAGGAGCAGGCAGCAATTAGCAGGCTCTTAAGTTTTTACAGGAGTGGGACAACGCTG
 GCAAAGTCGCAAGGAGTACATCCTCGACAAGTTCATTGAAACCAACCAAGGCAAGACTGCCCTGAACT
 GGAGCAGGAGTTTTCCAGGGAGCCAGTTTGTCTGGTACGCTTGACCACCTCGCTTAGAATCACCTAT
 ATGACTGACTCATGTTTAGAAAAGCTTCTCAGGTCATTGGCATCTTCTTATCAGCTGTAAGCAGTAATC
 GGTACCTTATAGAATTTCTGAGGTTGGAGGTGCTTAACCTCTTGAAATACTTGGGTAGAGAAGAT
 CAAGGAGGAGGCCAAGAAGGAATCTGTCAAACACTTTCAGGTTATTGCGAACTCTGGCAGGACATAAAG
 GAACTCATTTGTAAAGCTATGGTGTACGATCCATAGCAGAATTTTTGGCAAAGTCTAAGTCAGAAGAGA
 CCCAGGAGGAAGTGCAGGTTCTGTTGGATTCTTTGGTCCACGGCAATCCCAAGTACCAAAATCAAGTGTA
 TAAAGGTCTAATAGCTTTGCTGCCCTGCGAGTCCCAAAAAGCCAGCAGCTGTCCCTGCAGACTCTCAGG
 ACTGCCAGCCAATCATTGGGACCACACACCCAGCATCGTGGACTGCGTGTGAAGGTGCTGGGCACGA
 TGCACCTGGAAGTCCAGTATGAAGCCATCGAGTTGATCAAAGACCTGGTGGTACGATGTGCGCCAGGC
 GCTGCTCAAGGGCCTCGTGGCGCTGCTGATACCGTTCGTCAGGAGATCTCCAACTGCAGGCCAAGATC
 CTCAGTGACCCCTCGGTTCTCCAGCTCACCCAGCCTGCCGATGTTTTGCAGCAGGCCGCGGCCGCCA
 AGGCCATCGGGTCTGGCGCGCAACGACATGAGCATCGCCGAGGAGCTGCTGTACCTGCGCGTGGTGGC
 TGGCCTAATGGCCGCATGGGCAACACGGACCACAGCAACAGCCAGCGGCTGGCCAGCCTCACGCTGGAG
 TGCTTCGTGCAGATGTTCCCTTGGTGGCGGAGCAGTGCAGCAAGTGCATGGGGGAGGAACTCTACCAGC
 TCTTCTGAGCAACGCTGAGGACTTGTACATGAAAATAGACAGCATTTCAGGCGGACATCTGGCGGCCAA
 CACAGTCAATGTTACCAAGCCCTGTGCCTCCATGGCAGCTCCTACAGCATGAACACTCTCTATGGCTCG
 CGCGATTGCGCTCAGATGGCCTACCTCACACTTCGAGGAGGATGTAGAATCAAAGGAG

ACGCGTACGCGGCCGCTCGAGCAGAACTCATCTCAGAAGAGGATCTGGCAGCAAATGATATCCTGGATT
 ACAAGGATGACGACGATAAGGTTTAA

Protein Sequence:

>RC227441 representing NM_001145636
 Red=Cloning site Green=Tags(s)

MTSIKEQAAISRLLSFLQEWDNAGKVARSHILDKFIETNQGKTAPELEQEFSSQASLFLVRLTTSRLRITY
 MTDSCLEKLLRSIGIFLSAVSSNRYLIEFLEVGGVLTLLLEILGLEKIKEEAKKESVKLLQVIANSRITYK
 ELICESYGVRSIAEFLAKSKSEETQEEVQVLLDSL VHGPNKYQNQVYKGLIALLPCEPKAQQLSLQTLR
 TAQPIIGTTHPSIVDCVLKVLGTMHLEVQYEAIELIKDLVGYDVRQALLKGLVALLIPSVKEISKLQAKI
 LSDPSVLQLTPSLPMFLQAAAAKAIGVLRNDMSIAEELLYLRVVRGLMAAMGNTDHSNSQRLASLTLE
 CFVQMFPLVAEHVRKCMGEELYQLFLSNAEDLYMKIDSIQADILAANTVNVTKALCLHGSSYSMNTLYGS
 RDSAQMAYLTHFEEDVESKE

TRTRPLEQKLISEEDLAANDILDYKDDDDKV

Chromatograms:

https://cdn.origene.com/chromatograms/mg3853_g02.zip

Restriction Sites:

SgfI-MluI

Cloning Scheme:


ACCN: NM_001145636

ORF Size: 1320 bp

OTI Disclaimer: The molecular sequence of this clone aligns with the gene accession number as a point of reference only. However, individual transcript sequences of the same gene can differ through naturally occurring variations (e.g. polymorphisms), each with its own valid existence. This clone is substantially in agreement with the reference, but a complete review of all prevailing variants is recommended prior to use. [More info](#)

OTI Annotation: This clone was engineered to express the complete ORF with an expression tag. Expression varies depending on the nature of the gene.

Components: The ORF clone is ion-exchange column purified and shipped in a 2D barcoded Matrix tube containing 10ug of transfection-ready, dried plasmid DNA (reconstitute with 100 ul of water).

Reconstitution Method:

1. Centrifuge at 5,000xg for 5min.
2. Carefully open the tube and add 100ul of sterile water to dissolve the DNA.
3. Close the tube and incubate for 10 minutes at room temperature.
4. Briefly vortex the tube and then do a quick spin (less than 5000xg) to concentrate the liquid at the bottom.
5. Store the suspended plasmid at -20°C. The DNA is stable for at least one year from date of shipping when stored at -20°C.

RefSeq: [NM_001145636.2](#)

RefSeq ORF: 1323 bp

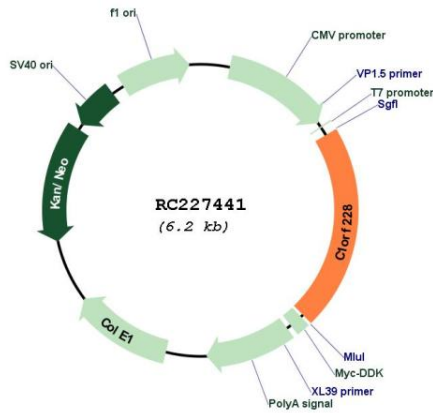
Locus ID: 339541

UniProt ID: [Q6PIY5](#)

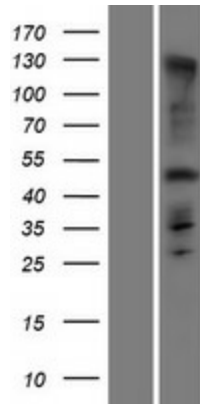
Cytogenetics: 1p34.1

MW: 48.7 kDa

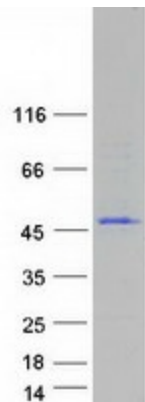
Product images:



Circular map for RC227441



Western blot validation of overexpression lysate (Cat# [LY428943]) using anti-DDK antibody (Cat# [TA50011-100]). Left: Cell lysates from untransfected HEK293T cells; Right: Cell lysates from HEK293T cells transfected with RC227441 using transfection reagent MegaTran 2.0 (Cat# [TT210002]).



Coomassie blue staining of purified ARMH1 protein (Cat# [TP327441]). The protein was produced from HEK293T cells transfected with ARMH1 cDNA clone (Cat# RC227441) using MegaTran 2.0 (Cat# [TT210002]).