

Product datasheet for **RC227439**

IRAKM (IRAK3) (NM_001142523) Human Tagged ORF Clone

Product data:

Product Type:	Expression Plasmids
Product Name:	IRAKM (IRAK3) (NM_001142523) Human Tagged ORF Clone
Tag:	Myc-DDK
Symbol:	IRAKM
Synonyms:	ASRT5; IRAKM
Mammalian Cell Selection:	Neomycin
Vector:	pCMV6-Entry (PS100001)
E. coli Selection:	Kanamycin (25 ug/mL)



[View online »](#)

ORF Nucleotide Sequence:

>RC227439 representing NM_001142523
 Red=Cloning site Blue=ORF Green=Tags(s)

TTTTGTAATACGACTCACTATAGGGCGGCCGGAATTCGTCGACTGGATCCGGTACCGAGGAGATCTGCC
 GCC**CGGATCGCC**

ATGGCGGGAACTGTGGGGCCCGGCGCGCTGTGGCGCACACGCTGCTGTTTCGACCTGCCGCCCGCGC
 TGCTCGGAGAGCTCTGCGCTGTTCTGGACAGCTGCGACGCGCGCTGGGCTGGCGCGGCCTGGGAGCAGT
 GTTGAGTCTTCAGAGAAGATTATCAGGAAGGTGGATTTCAAAATATATTATTCAAGGAAACAGCCAAT
 GTCACCGTGGATAATGTTCTTATCCTGAACATAATGAAAAAGGAATACTGCTTAAATCTCCATCAGCT
 TTCAAAATATCATAGAAGGAAGTAAATTTCCACAAAGACTTCTAATTGGAGAAGGAGAGATTTTGA
 GGTATACAGAGTGGAGATTCAAAACCTAACATATGCTGTCAAATTTAAACAGGAGAAAAAATGCAG
 TGTAAGAAGCATTGGAAGAGTTTTTATCTGAGCTTGAAGTTTTACTACTGTTTCATACCCAAACATAC
 TAGAGTTGGCTGCATATTTACAGAGACTGAGAAGTCTGTCTGATTTATCCATACATGAGAAATGGAAC
 ACTTTTTGACAGATTGCAGTGTGTAGGTGACACGGCCCACTCCCTTGGCACATTCGAATCGGTATATTA
 ATAGGAATATCCAAAGCCATTCCTACCTGCACAACGTTCAACCATGCTCGGTATCTGTGGCAGTATAT
 CAAGTGCAAACATCCTTTTGGATGATCAGTTTCAACCCAACTAACTGATTTTGGCATGGCACACTCCG
 GTCCACCTAGAACATCAGAGTTGTACCATAAATATGACCAGCAGCAGCAGTAAACATCTGTGGTACATG
 CCAGAAGAGTACATCAGACAGGGGAACTTTCCATTAACAGATGTCTACAGCTTTGGAATTGTAATAA
 TGGAAAGTTCTAACAGGATGTAGAGTAGTGTAGATGATCCAAAACATATCCAGCTGCGGGATCTCCTTAG
 AGAATTGATGGAGAAGAGAGGCCCTGGATTATGTCTCTCATTCTAGATAAGAAAGTGCCTCCCTGCCCT
 CGGAATTTCTCTGCCAAGCTCTTCTGTTGGCAGGCCGGTGTGCTGCAACGCGGGCAAAGTTAAGACCAT
 CAATGGATGAAGTTTTAAATACTCTTGAAGACTCAAGCCAGCTTGATTTTGTGAAGATCCTCCAC
 ATCACTAAAGTCCTTCAGGTGTCCTTCTCTCTATTCTGGAGAATGTACCAAGTATTCAGTGGAAAGAT
 GATGAAAGCCAGAATAACAATTTACTACCTTCTGATGAAGGCCTGAGGATAGACAGAATGACTCAGAAAA
 CTCCTTTTGAATGCAGCCAGTCTGAGGTTATGTTTCTGAGCTTGGACAAAAAGCCAGAGAGCAAGAGAAA
 TGAGGAAGCTTGCAACATGCCAGTTCTTCTTGTGAAGAAAGTTGGTTCCCAAAGTATATAGTTCCATCC
 CAGGACTTAAGGCCCTATAAGGTAATATAGATCCTTCTCAGAAGCTCCAGGGCATTCTGCAGGAGCA
 GGCCAGTGAGAGCAGCTGTTCTCCAAATTTCTGGGATGAATATGAACAGTACAAAAAGAA

ACGCGTACGCGGCCGCTCGAGCAGAACTCATCTCAGAAGAGGATCTGGCAGCAAATGATATCCTGGATT
 ACAAGGATGACGACGATAAGGTTTAA

Protein Sequence:

>RC227439 representing NM_001142523
 Red=Cloning site Green=Tags(s)

MAGNCGARGALSAHTLLFDLPPALLGELCAVLDSCDGALGWRGLGAVLSPSEKSYQEGGFPNILFKETAN
 VTVDNVL IPEHNEKGILLKSSISFQNIIEGTRNFHKDFLIGEGEIFEVYRVEIQNLTYAVKLFKQEKMQ
 CKKHWRFLSELEVLLL FHPNILELAAYFTETEKFCL IYPYMRNGTLFDRLQCVGDTAPLPHIRIGIL
 IGISKA IHYLHNVPQCSVICGSISSANILLDDQFQPKL TDFAMAHFRSHLEHQ SCTINMTSSSKHLWYM
 PEEYIRQGKLSIKTDVYSFGIVIMEVL TGCRRVLD DPKHIQLRDLRELMEKRGLD SCLSFLLDKKVP
 PCP RNFSAKL FCLAGRCAATRAKLRPSMDEV LNTLESTQASLYFAEDPPTSLKSFRCPSPLFLENVPSIP
 VED DESQNNLLPSDEGLRIDRMTQKTPFECSQSEVMFLSLDKKPESKRNEEACNMPSSCEESWFPKYI
 VPS QDLRPYKVNIDPSEAPGHSCR SRPVESSSKFSWDEYEQYKKE

TRTRPLEQKLISEEDLAANDILDYKDDDDKV

Chromatograms:

https://cdn.origene.com/chromatograms/mk8066_a07.zip

Restriction Sites:

Sgfl-MluI

Cloning Scheme:


ACCN: NM_001142523

ORF Size: 1605 bp

OTI Disclaimer: The molecular sequence of this clone aligns with the gene accession number as a point of reference only. However, individual transcript sequences of the same gene can differ through naturally occurring variations (e.g. polymorphisms), each with its own valid existence. This clone is substantially in agreement with the reference, but a complete review of all prevailing variants is recommended prior to use. [More info](#)

OTI Annotation: This clone was engineered to express the complete ORF with an expression tag. Expression varies depending on the nature of the gene.

Components: The ORF clone is ion-exchange column purified and shipped in a 2D barcoded Matrix tube containing 10ug of transfection-ready, dried plasmid DNA (reconstitute with 100 ul of water).

Reconstitution Method:

1. Centrifuge at 5,000xg for 5min.
2. Carefully open the tube and add 100ul of sterile water to dissolve the DNA.
3. Close the tube and incubate for 10 minutes at room temperature.
4. Briefly vortex the tube and then do a quick spin (less than 5000xg) to concentrate the liquid at the bottom.
5. Store the suspended plasmid at -20°C. The DNA is stable for at least one year from date of shipping when stored at -20°C.

RefSeq: [NM_001142523.2](#)

RefSeq ORF: 1608 bp

Locus ID: 11213

UniProt ID: [Q9Y616](#)

Cytogenetics: 12q14.3

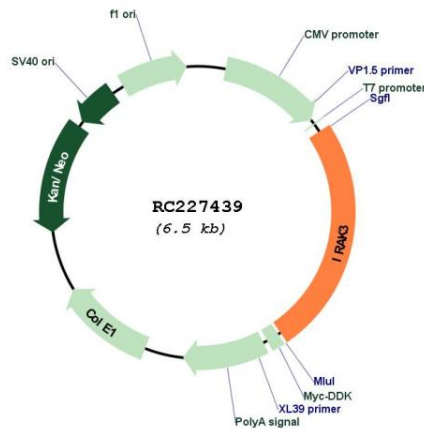
Protein Families: Druggable Genome, Protein Kinase

Protein Pathways: Apoptosis, Neurotrophin signaling pathway

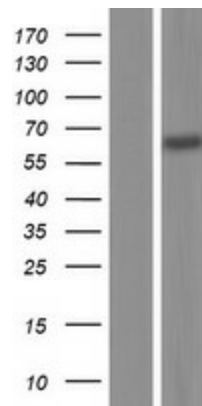
MW: 60.4 kDa

Gene Summary: This gene encodes a member of the interleukin-1 receptor-associated kinase protein family. Members of this family are essential components of the Toll/IL-R immune signal transduction pathways. This protein is primarily expressed in monocytes and macrophages and functions as a negative regulator of Toll-like receptor signaling. Mutations in this gene are associated with a susceptibility to asthma. Alternate splicing results in multiple transcript variants. [provided by RefSeq, May 2010]

Product images:



Circular map for RC227439



Western blot validation of overexpression lysate (Cat# [LY428144]) using anti-DDK antibody (Cat# [TA50011-100]). Left: Cell lysates from untransfected HEK293T cells; Right: Cell lysates from HEK293T cells transfected with RC227439 using transfection reagent MegaTran 2.0 (Cat# [TT210002]).