

Product datasheet for **RC227437**

HEF1 (NEDD9) (NM_001142393) Human Tagged ORF Clone

Product data:

Product Type:	Expression Plasmids
Product Name:	HEF1 (NEDD9) (NM_001142393) Human Tagged ORF Clone
Tag:	Myc-DDK
Symbol:	HEF1
Synonyms:	CAS-L; CAS2; CASL; CASS2; HEF1
Mammalian Cell Selection:	Neomycin
Vector:	pCMV6-Entry (PS100001)
E. coli Selection:	Kanamycin (25 ug/mL)



[View online »](#)

ORF Nucleotide Sequence:

>RC227437 representing NM_001142393
 Red=Cloning site Blue=ORF Green=Tags(s)

TTTTGTAATACGACTCACTATAGGGCGGCCGGGAATTCGTCGACTGGATCCGGTACCGAGGAGATCTGCC
 GCC**CGGATCGCC**

ATGTGGACAAGGAATCTTATGGCAAGGGCCTTATATGACAATGTCCAGAGTGTGCCGAGGAACCTGGCCT
 TTCGCAAGGGAGACATCCTGACCGTCATAGAGCAGAACACAGGGGACTGGAAGGATGGTGGCTGTGCTC
 ATTACACGGTCGCAAGGCATTGTCCCAGGCAACCGGGTGAAGCTTCTGATTGGTCCCATGCAGGAGACT
 GCCTCCAGTACGAGCAGCCTGCCTCTGGACTGATGCAGCAGACCTTTGGCCAACAGAAGCTCTATCAAG
 TGCCAAACCCACAGGCTGCTCCCGAGACACCATCTACCAAGTCCACCTTCTACCAAAAATCAGGGAAT
 TTACCAAGTCCCCACTGGCCACGGCACCAAGAACAAGAGGTATATCAGGTGCCACCATCAGTGCAGAGA
 AGCATTGGGGGAACAGTGGGCCCCACGTGGTAAAAAGGTGATAACCCCGTGAGGACAGGCCATGGCT
 ACGTATACGAGTACCCATCCAGATACCAAAAGGACGTCTATGATATCCCTCCTTCTCATACCACTCAAGG
 GGTATACGACATCCCTCCCTCATCAGAAAAGGCCCTGTGTTTTAGTTCAGTCCAGTGGGAGAGATAAAACCT
 CAAGGGGTGTATGACATCCCGCCTACAAAAGGGGTATATGCCATTCGGCCCTCTGCTTGGCCGGGATGAAG
 CAGGGCTTAGGAAAAAGACTATGACTTCCCCCTCCCATGAGACAAGCTGGAAGGCCGGACCTCAGACC
 GGAGGGGGTTTATGACATTCTCCAACCTGCACCAAGCCAGCAGGGAAGGACCTTCATGTAAAATACAAC
 TGTGACATTCCAGGAGCTGCAGAACCGGTGGCTCGAAGGCACAGAGCCTGTCCCGAATCACCCACCCC
 CGCAACTCGGACAGTCACTGGGCTCTCAGAACGACGCATATGATGTCCCGGAGGCGTTCAGTTTCTTGA
 GCCACCAGCAGAAACAGTGAGAAAGCAAAACCCAGGAAAGGGATGGTGTATGATGTCCCTCTGCAT
 AACCCGCCAGATGCTAAAGGCTCTCGGGACTTGGTGGATGGGATCAACCGATTGTCTTTCTCCAGTACAG
 GCAGACCCGGAGTAACATGTCCACGTCTTCCACCTCCTCAAGGAGTCCCTCACTGTCCAGCTCCCAGC
 TCAGGACAAAAGGCTCTTCTGGATCCAGACACAGCTATTGAGAGACTTCAGCGGCTCCAGCAGGCCCTT
 GAGATGGGTGTCTCCAGCCTAATGGCACTGGTCACTACCGACTGGCGGTGTACGGATATATGAAAAGAC
 ACATCAATGAAATACGCACAGCAGTGGACAAGGTGGAGCTGTTCTGAAGGAGTACCTCCACTTTGTCAA
 GGGAGCTGTTGAAAATGCTGCCTGCCCTCCCGAACTCATCTCCACAACAAGATGAAGCGGGAGCTGCAA
 CGAGTTGAAGACTCCCACCAGATCCTGAGTCAAACAGCCATGACTTAAATGAGTGCAGCTGGTCCCTGA
 ATATCTTGGCCATCAACAAGCCCCAGAACAAGTGTGACGATCTGGACCGTTTGTGATGGTGGCAAAGAC
 GGTGCCCGATGACGCCAAGCAGCTCACCAACCATCAACACCAACGCAGAGGCCCTCTCAGACCCGGC
 CCTGGCAGCTTGCATCTGAAGAATGGGCGGAGAGCATCATGAACTCAACGGAGTACCCACACGGTGGCT
 CCCAGGGACAGCTGCTGCATCCTGGTGACCACAAGGCCACAGGCCACAACAAGGCACTGCCCCAGGCCCT
 GAGCAAGGAGCAGGCCCTGACTGTAGCAGCAGTGTGTTCTGAGAGGAGCTGGATGGATGACTACGAT
 TACGTCCACCTACAGGTAAGGAGGAGTTTGGAGGCAACAGAAAAGAGCTATTGGAAAAAGAGAATATCA
 TGAAACAGAAACAAGATGCAGCTGGAACATCATCAGCTGAGCCAGTTCAGCTGTTGGAACAAGAGATTAC
 AAAGCCCGTGGAGAATGACATCTCGAAGTGAAGCCCTCTCAGAGCCTACCCACCACAAACAGTGGCGTG
 AGTGCTCAGGATCGGCAGTTGCTGTGCTTCTACTATGACCAATGTGAGACCCATTTCAATTCCTTCTCA
 ACGCCATTGACGCACTCTCAGTTGTGTGCTCAGCTCAGCCAGCCCCGGAATCTTCGTGGCACACAGCAA
 GTTTGTCACTCAGTGCACACAACTGGTGTTCATTGGAGACAGCTGACACGGCAGGTGACTGCCCAAG
 GACATTGCAACAAAGTCACTGAACTCCAGCAACCAGCTCTGCGAGCAGCTCAAGACCATAGTCATGGCAA
 CCAAGATGGCCGCCCTCATTACCCAGCACACGGCCCTGCAGGAAATGGTGCACCAAGTGCAGACCT
 TTCTAGAAATGCCAGCTGTTCAAGCGCTCTTGTGCTGGAGATGGCAACGTTT

ACGCGTACGCGGCCGCTCGAGCAGAACTCATCTCAGAAGAGGATCTGGCAGCAAATGATATCCTGGATT
 ACAAGGATGACGACGATAAGGTTTAA

Protein Sequence: >RC227437 representing NM_001142393
Red=Cloning site Green=Tags(s)

MWTRNLMARALYDNVPECAEELAFRKGDILTVIEQNTGGLEGWWLCSLHGRQGI VPGNRV KLLIGPMQET
ASSHEQPASGLMQQTFGQQKLYQVPNPQAAPRDTIYQVPPSYQNQGIYQVPTGHGTQEVEVYQVPPSVQR
SIGGTS GPHVGGKVI TPVRTGHGYVVEYPSRYQKDVYDIPPSHTTQGVYDIPSSAKGPVFSVPVGEIKP
QGVYDIPPTKGVYAIPPSACRDEAGLREKDYDFPPPMRQAGRPDLRPEGVYDIPPTCTKPAGKDLHVKYN
CDIPGAAEPVARRHQSLSPNHPPPQLGQSVGSQNDAYDVPRGVQFLEPPAETSEKANPQERDGVYDVPLH
NPPDAKGSRDLDVGINRLSFSSTGSTRSNMSTSSTSSKESSLASPAQDKRFLDPDTAIERLQRLQQAL
EMGVSSLMALVTTDWRCYGYMERHINEIRTAVDKVELFLKEYLHFVKGAVANAACLPELILHNKMKRELQ
RVEDSHQILSQTSHDLNECSWSLNILAINKPQNKCDLDRFVMVAKTVPDDAKQLTTTINTNAEALFRPG
PGSLHLKNGPESIMNSTEYPHGGSQGQLLHPGDHKAQAHNKALPPGLSKEQAPDCSSSDGSESWMDDYD
YVHLQGKEEFERQQKELLEKENIMKQNKMLEHHQLSQFQLLEQEITKPVENDISKWKPSQSLPTTNSGV
SAQDRQLLCFYDQCETHFISLLNAIDALFSCVSSAQPPIRFVAHSKFVILSAHKLVFIGDTLTRQVTAQ
DIRNKVMNSSNQLCEQLKTIVMATKMAALHYPSTTALQEMVHQVTDLSRNAQLFKRSLLEMATF

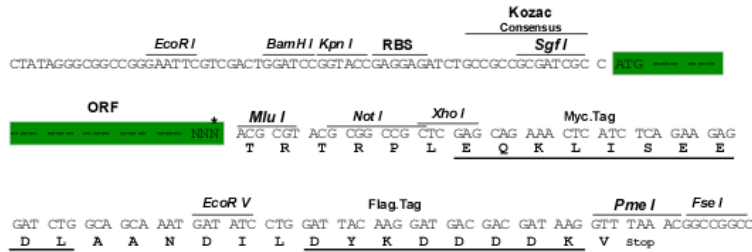
TRTRPLEQKLISEEDLAANDILDYKDDDDKV

Chromatograms: https://cdn.origene.com/chromatograms/mk6141_c10.zip

Restriction Sites: Sgfl-Mlul

Cloning Scheme:

Cloning sites used for ORF Shuttling:



* The last codon before the Stop codon of the ORF

ACCN: NM_001142393

ORF Size: 2502 bp

OTI Disclaimer: The molecular sequence of this clone aligns with the gene accession number as a point of reference only. However, individual transcript sequences of the same gene can differ through naturally occurring variations (e.g. polymorphisms), each with its own valid existence. This clone is substantially in agreement with the reference, but a complete review of all prevailing variants is recommended prior to use. [More info](#)
OTI Annotation: This clone was engineered to express the complete ORF with an expression tag. Expression varies depending on the nature of the gene.

Components: The ORF clone is ion-exchange column purified and shipped in a 2D barcoded Matrix tube containing 10ug of transfection-ready, dried plasmid DNA (reconstitute with 100 ul of water).

Reconstitution Method:

1. Centrifuge at 5,000xg for 5min.
2. Carefully open the tube and add 100ul of sterile water to dissolve the DNA.
3. Close the tube and incubate for 10 minutes at room temperature.
4. Briefly vortex the tube and then do a quick spin (less than 5000xg) to concentrate the liquid at the bottom.
5. Store the suspended plasmid at -20°C. The DNA is stable for at least one year from date of shipping when stored at -20°C.

RefSeq: [NM_001142393.1](#), [NP_001135865.1](#)

RefSeq ORF: 2505 bp

Locus ID: 4739

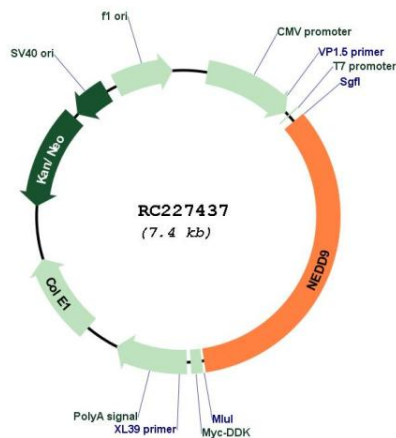
UniProt ID: [Q14511](#)

Cytogenetics: 6p24.2

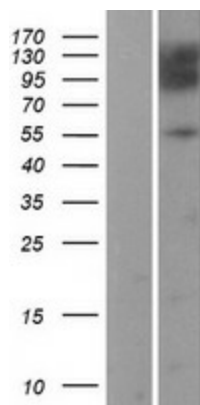
MW: 92.7 kDa

Gene Summary: The protein encoded by this gene is a member of the CRK-associated substrates family. Members of this family are adhesion docking molecules that mediate protein-protein interactions for signal transduction pathways. This protein is a focal adhesion protein that acts as a scaffold to regulate signaling complexes important in cell attachment, migration and invasion as well as apoptosis and the cell cycle. This protein has also been reported to have a role in cancer metastasis. Alternative splicing results in multiple transcript variants. [provided by RefSeq, Aug 2012]

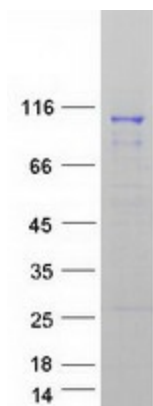
Product images:



Circular map for RC227437



Western blot validation of overexpression lysate (Cat# [LY428064]) using anti-DDK antibody (Cat# [TA50011-100]). Left: Cell lysates from untransfected HEK293T cells; Right: Cell lysates from HEK293T cells transfected with RC227437 using transfection reagent MegaTran 2.0 (Cat# [TT210002]).



Coomassie blue staining of purified NEDD9 protein (Cat# [TP327437]). The protein was produced from HEK293T cells transfected with NEDD9 cDNA clone (Cat# RC227437) using MegaTran 2.0 (Cat# [TT210002]).