

Product datasheet for **RC227436**

ZCCHC18 (NM_001143978) Human Tagged ORF Clone

Product data:

Product Type:	Expression Plasmids
Product Name:	ZCCHC18 (NM_001143978) Human Tagged ORF Clone
Tag:	Myc-DDK
Symbol:	ZCCHC18
Synonyms:	PNMA7B; SIZN2
Mammalian Cell Selection:	Neomycin
Vector:	pCMV6-Entry (PS100001)
E. coli Selection:	Kanamycin (25 ug/mL)
ORF Nucleotide Sequence:	>RC227436 representing NM_001143978 Red=Cloning site Blue=ORF Green=Tags(s)

TTTTGTAATACGACTCACTATAGGGCGGCCGGAATTCGTCGACTGGATCCGGTACCGAGGAGATCTGCC
GCC**CGATCGCC**

ATGGCTAGCATCACTGCGTGTGTGGTAAACAGCAGGCAGCAGAATGCACCTTTGCCGCTTGGGCCATT
CCATGTTGAGGTCTCTGGGGAGGAGTCTCTGTCTTTAGTGGTCAAATGGCAGAGAGAAACATGAAGTT
GTTCTCAGGAAGAGTGGTCCAGCCAGGGAAAGAAACCTTTGAAAACCTGGCTGATCCAAGTCAATGAG
GTCCTGCCAGATTGGAGTATGTCTGAGGAGGAAAACTCAAGCGCTTGATGAAAACCTTAGGGGCCCTG
CCCGGGAGGTCATGCGTTTGCTCAGGGCGCCAACCCCAACCTAAGTGTAGCAGATTTCTTGCGGGCAAT
GAAATTGGTGTTGGGGAGTCTGAAAGCAGTGTGACTGCCATGGTAAATTTTTAACACCTGCAGGCA
CAAGGGGAGAAAGCCTCCCTTTATGTGATCCGTTTAGAGGTGCAGCTCCAGAATGCTATTCAGGCAGGCA
TCCTAGCTGAGAAAGATGCAAACAGACTCGCTTGCAACAGCTTCTTTAGGCGCTGAGCTGAATAGGGA
CCTGCGCTTCAGGCTTAAGCATCTTCTCAGGATGTATGCAAATAAGCAGGAGCGGCTTCCCAATTCCTG
GAGTTAATCAAGATGATAAGGGAGGAAGAGGATTGGGATGATGCTTTTATAACGGAAGCGGCCGAAAA
GGTCTGAGCCAATAATGGAGAGGGCAGCCAGCCCTGTGGCATTTCAGGGCGCCAGCCAATAGCAATCAG
CAGTGTGACTGTAACCTGCAACGTGATAGAAATAGATGATACCCTTGATGACTCTGATGAGGATGTGATC
CTGGTGGTGTCTGTACCCTTCACTGACACCTACAGGTGCCCTCCCTCAGAGGAAGAGCCAGACCTC
TGGATCAAGTGTGTTATTGATCCCCCAACAATTCTGGGGCTCAGTCTCTTTCTACCAGTGGTGGTTC
TGGGTATAAAGAATGATGTCCTGGGAATATTCGTAGAGCCAGGAAGCGAAAAATACACAACCCGCTGTTCA
TATTGTGGGGAGGAGGGCACTCAAAGAAACCTGTGACAATGAGAGCAACAAGGCCAGGTTTTGAGA
ATCTGATCATACCCTGCAGGAGCTGACACATACAGAGGAGAGGTCAAAGAGGTCCCTGGAGAACACAG
TGATGCTTCTGAGCCACAG

ACGCGTACGCGGCCGCTCGAGCAGAAACTCATCTCAGAAGAGGATCTGGCAGCAAATGATATCTGGATT
ACAAGGATGACGACGATAAGGTTTAA



Protein Sequence: >RC227436 representing NM_001143978
Red=Cloning site Green=Tags(s)

MASITACVGNRSRQQNAPLPPWAHSMRLSLGRSLCPLVVKMAERNMKLFSGRVVP AQGKETFENWLIQVNE
 VLPDWSMSEEEKLKRLMKTLRGPAREVMRLLQAANPNLSVADFLRAMKLVFGESESVTAHGKFFNTLQA
 QGEKASLYVIRLEVQLQNAIQAGILA EKDANQTRLQQLLLGAELNRDLRFRLKHLRLMYANKQERLPNFL
 ELIKMIREEEDWDDAFIKRKRPKRSEPIMERAASPVAFQGAQPIA ISSADCNCNVIEIDDTLDDSDDEDVI
 LVVSLYPSLTPTGAPPFRGRARPLDQVLVIDSPNNSGAQSLSTSGSGSYKNDGPGNIRRARKRKYTTRCS
 YCGEEGHSKETCDNESNKAQVFENLIITLQELTHTEERSKEVPGEHSDASEPQ

TRTRPLEQKLISEEDLAANDILDYKDDDDKV

Chromatograms: https://cdn.origene.com/chromatograms/mk8037_h05.zip

Restriction Sites: SgfI-MluI

Cloning Scheme:



* The last codon before the Stop codon of the ORF

ACCN: NM_001143978

ORF Size: 1209 bp

OTI Disclaimer: The molecular sequence of this clone aligns with the gene accession number as a point of reference only. However, individual transcript sequences of the same gene can differ through naturally occurring variations (e.g. polymorphisms), each with its own valid existence. This clone is substantially in agreement with the reference, but a complete review of all prevailing variants is recommended prior to use. [More info](#)

OTI Annotation: This clone was engineered to express the complete ORF with an expression tag. Expression varies depending on the nature of the gene.

Components: The ORF clone is ion-exchange column purified and shipped in a 2D barcoded Matrix tube containing 10ug of transfection-ready, dried plasmid DNA (reconstitute with 100 ul of water).

- Reconstitution Method:**
1. Centrifuge at 5,000xg for 5min.
 2. Carefully open the tube and add 100ul of sterile water to dissolve the DNA.
 3. Close the tube and incubate for 10 minutes at room temperature.
 4. Briefly vortex the tube and then do a quick spin (less than 5000xg) to concentrate the liquid at the bottom.
 5. Store the suspended plasmid at -20°C. The DNA is stable for at least one year from date of shipping when stored at -20°C.

RefSeq: [NM_001143978.1](#), [NP_001137450.1](#)

RefSeq ORF: 1212 bp

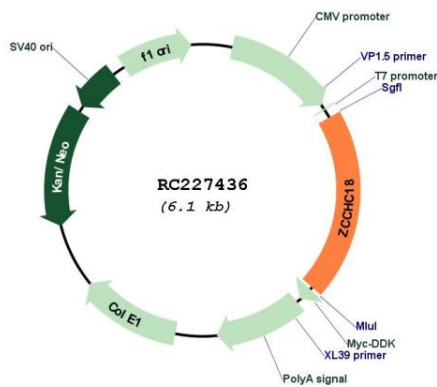
Locus ID: 644353

UniProt ID: [P0CG32](#)

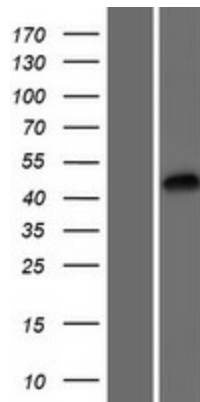
Cytogenetics: Xq22.2

MW: 45 kDa

Product images:



Circular map for RC227436



Western blot validation of overexpression lysate (Cat# [LY428438]) using anti-DDK antibody (Cat# [TA50011-100]). Left: Cell lysates from untransfected HEK293T cells; Right: Cell lysates from HEK293T cells transfected with RC227436 using transfection reagent MegaTran 2.0 (Cat# [TT210002]).