

Product datasheet for RC227422

VSTM5 (NM_001144871) Human Tagged ORF Clone

Product data:

Product Type:	Expression Plasmids
Product Name:	VSTM5 (NM_001144871) Human Tagged ORF Clone
Tag:	Myc-DDK
Symbol:	VSTM5
Synonyms:	C11orf90
Mammalian Cell Selection:	Neomycin
Vector:	pCMV6-Entry (PS100001)
E. coli Selection:	Kanamycin (25 ug/mL)
ORF Nucleotide Sequence:	>RC227422 representing NM_001144871 Red=Cloning site Blue=ORF Green=Tags(s)

TTTGTAAATACGACTCACTATAGGGCGGCCGGAATTCGTCGACTGGATCCGGTACCGAGGAGATCTGCC
 GCCGCGATCGCC

ATGAGGCCTCTGCCAGCGGGAGGAGGAAGACCCGAGGCATCTCCCTAGGACTCTTCGCCCTCTGCCTGG
 CCGCAGCCCGCTGTCTGCAGAGTCAGGGTGTGTCCCTATACATTCCTCAGGCCACCATCAATGCCACTGT
 CAAAGAAGACATCCTGCTCTCAGTTGAGTACTCCTGTCTGAGTGGAGTGGCCACCATCGAATGGACATATTCA
 TCCAATTGGGAACGCAGAAGATCGTGGAGTGGAAACCAGGGACTCAGGCCAACATCTCTCAAAGCCACA
 AGGACAGAGTCTGCACCTTTGACAACGGCTCCATCCAGCTCTTCAGCGTGGGAGTGAGGGATTCCGGCTA
 CTATGTCATCACCGTGACGGAGCGCTGGGGAGCAGCCAGTTTGGCACCATCGTGTCTGCAGTCTCTGAG
 ATCCTCTATGAAGACCTGCACCTTTGTCGCTGTCATCCTTGCTTTTCTCGCTGCTGTGGCCGAGTATTAA
 TCAGCCTCATGTGGGTTTGAATAAGTGTGCATATAAATTTAGAGGAAGAGAAGACACAACTCAAAGA
 AAGCAAACTGAGGAGATTGAGCTGGAAGATGTTGAGTGT

ACGCGTACGCGGCCGCTCGAGCAGAACTCATCTCAGAAGAGGATCTGGCAGCAAATGATATCCTGGATT
 ACAAGGATGACGACGATAAGGTTTAA

Protein Sequence:	>RC227422 representing NM_001144871 Red=Cloning site Green=Tags(s)
-------------------	---

MRPLPSGRRKTRGISLGLFALCLAAARCLQSQGVSLYIPQATINATVKEDILLSVEYSCHGVPTIEWTYS
 SNWGTQKIVEWKPGTQANISQSHKDRVCTFDNGSIQLFSVGVRDSGYVITVTERLGSSQFGTIVLHVSE
 ILYEDLHFVAVILAFLAVAVALISLMWVCNKAYKFQRRRHKLKESTTEEIELEDVEC

TRTRPLEQKLISEEDLAANDILDYKDDDDKV


[View online »](#)

Chromatograms: https://cdn.origene.com/chromatograms/mk8006_g01.zip

Restriction Sites: SgfI-MluI

Cloning Scheme:



ACCN: NM_001144871

ORF Size: 600 bp

OTI Disclaimer: Due to the inherent nature of this plasmid, standard methods to replicate additional amounts of DNA in E. coli are highly likely to result in mutations and/or rearrangements. Therefore, OriGene does not guarantee the capability to replicate this plasmid DNA. Additional amounts of DNA can be purchased from OriGene with batch-specific, full-sequence verification at a reduced cost. Please contact our customer care team at custsupport@origene.com or by calling 301.340.3188 option 3 for pricing and delivery.

The molecular sequence of this clone aligns with the gene accession number as a point of reference only. However, individual transcript sequences of the same gene can differ through naturally occurring variations (e.g. polymorphisms), each with its own valid existence. This clone is substantially in agreement with the reference, but a complete review of all prevailing variants is recommended prior to use. [More info](#)

OTI Annotation: This clone was engineered to express the complete ORF with an expression tag. Expression varies depending on the nature of the gene.

Components: The ORF clone is ion-exchange column purified and shipped in a 2D barcoded Matrix tube containing 10ug of transfection-ready, dried plasmid DNA (reconstitute with 100 ul of water).

Reconstitution Method:

1. Centrifuge at 5,000xg for 5min.
2. Carefully open the tube and add 100ul of sterile water to dissolve the DNA.
3. Close the tube and incubate for 10 minutes at room temperature.
4. Briefly vortex the tube and then do a quick spin (less than 5000xg) to concentrate the liquid at the bottom.
5. Store the suspended plasmid at -20°C. The DNA is stable for at least one year from date of shipping when stored at -20°C.

Note: Plasmids are not sterile. For experiments where strict sterility is required, filtration with 0.22um filter is required.

RefSeq: NM_001144871.2

RefSeq ORF: 603 bp

Locus ID: 387804

UniProt ID: A8MXK1

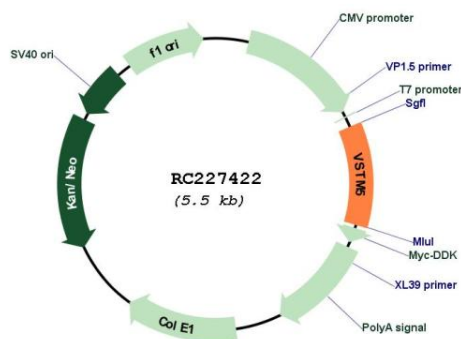
Cytogenetics: 11q21

Protein Families: Transmembrane

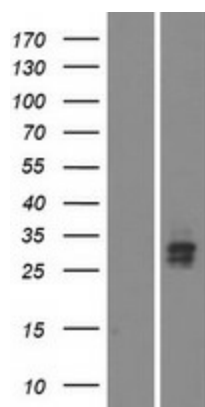
MW: 22.2 kDa

Gene Summary: Cell adhesion-like membrane protein of the central nervous system (CNS) which modulates both the position and complexity of central neurons by altering their membrane morphology and dynamics. Involved in the formation of neuronal dendrites and protrusions including dendritic filopodia. In synaptogenesis, regulates synapse formation by altering dendritic spine morphology and actin distribution. Promotes formation of unstable neuronal spines such as thin and branched types. Regulates neuronal morphogenesis and migration during cortical development in the brain.[UniProtKB/Swiss-Prot Function]

Product images:



Circular map for RC227422



Western blot validation of overexpression lysate (Cat# [LY428533]) using anti-DDK antibody (Cat# [TA50011-100]). Left: Cell lysates from untransfected HEK293T cells; Right: Cell lysates from HEK293T cells transfected with RC227422 using transfection reagent MegaTran 2.0 (Cat# [TT210002]).