

## Product datasheet for **RC227421**

### **SLITRK2 (NM\_001144004) Human Tagged ORF Clone**

#### **Product data:**

Product Type:	Expression Plasmids
Product Name:	SLITRK2 (NM_001144004) Human Tagged ORF Clone
Tag:	Myc-DDK
Symbol:	SLITRK2
Synonyms:	CXorf1; CXorf2; SLITL1; TMEM257
Mammalian Cell Selection:	Neomycin
Vector:	pCMV6-Entry (PS100001)
E. coli Selection:	Kanamycin (25 ug/mL)



[View online »](#)

**ORF Nucleotide  
Sequence:**

>RC227421 ORF sequence  
 Red=Cloning site Blue=ORF Green=Tags(s)

TTTTGTAATACGACTCACTATAGGGCGGCCGGGAATTCGTCGACTGGATCCGGTACCGAGGAGATCTGCC  
 GCC**CGGATCGCC**

RCATGCTGAGCGCGTGGTTGCTCCTCAGTGTGTTAACCGTGGCCGGGATCTTACAGACAGAGAGTGC  
 AACTGCCAAAGACATTTGCAAGATCCGCTGTCTGTGCGAAGAAAAGGAAAACGTAATCAACTGT  
 GAGAACAAAGGATTTACAACAGTTAGCCTGCTCCAGCCCCCAGTATCGAATCTATCAGCTTTTCTCA  
 ATGAAACCTCTTGACAAGACTGTATCCAAACGAATTTGTCAATTACTCCAACGCGGTGACTCTTCACT  
 AGGTAACAACGGGTTACAGGAGATCCGAACGGGGCATTGAGTGGCCTGAAAACCTCAAAAAGACTGCAT  
 CTCAACAACAACAAGCTTGAGATATTGAGGGAGGACACCTTCTAGGCCTGGAGAGCCTGGAGTATCTCC  
 AGGCCGACTACAATTACATCAGTGCCATCGAGGCTGGGGCATTGAGCAAACTTAAACAGCTCAAAGTGT  
 CATCTGAAATGACAACCTTCTGCTTTCAGTCCGAGCAATGTGTTCCGCTTTGCTCCTGCTGACCCACTTA  
 GACCTCAGGGGAATAGGCTAAAAGTAATGCCTTTTGTGGCGTCTTGAACATATTGGAGGATCATGG  
 AGATTCAGCTGGAGGAAAATCCATGGAATTGCACTTGTGACTTACTTCTCTCAAGGCCTGGCTAGACAC  
 CATAACTGTTTTTGTGGGAGAGATTGTCTGTGAGACTCCCTTTAGGTTGCATGGGAAAGACGTGACCCAG  
 CTGACCAGGCAAGACCTGTGCCCAGAAAAAGTCCAGTGATTCCAGTCAGAGGGGACAGCATGCTGACA  
 CCCACGTCCAAAGGCTGTACCTACAATGAATCCTGCTCTCAACCAACAGGGCTCCGAAAGCCAGCCG  
 GCCGCCAAAAATGAGAAATCGTCCAACCTCCCGAGTGACTGTGTCAAAGGACAGGCAAAGTTTTGGACCC  
 ATCATGGTGTACCAGACCAAGTCTCCTGTGCCTCTCACCTGTCCAGCAGCTGTGTCTGCACCTCTCAGA  
 GCTCAGACAATGGTCTGAATGTAACCTGCAAGAAAGGAAAGTTCATAATCTCTGACCTGCAGCCCAA  
 ACCGACCAAGTCCAAAGAACTACCTAACAGGGAATCTTCAAACCTGTCTATAAAGAAAGACCTTAA  
 GAATACAGTTCTTTGGACTTACTGCACTTAGGAAACAACAGGATTGCAAGTCACTCAGGAAGGTGCCTTTA  
 CAAACCTGACCAGTTTACGACAGCTTTATCTGAATGGCAATTACCTTGAAGTGTGTACCCCTTCTATGTT  
 TGATGGACTGCAGAGCTTGAATATCTCTATTTAGAGTATAATGTCATTAAAGGAAATTAAGCCTCTGACC  
 TTTGATGCTTTGATTAACCTACAGCTACTGTTTCTGAACAACAACCTTCTCGGTCTTACCTGATAATA  
 TATTTGGGGGACGGCCCTAACCCAGGCTGAATCTGAGAAACAACCATTTTTCTCACCTGCCCGTAAAGG  
 GGTCTGGATCAGCTCCCGCTTTCATCCAGATAGATCTGCAGGAGAACCCTGGGACTGTACCTGTGAC  
 ATCATGGGGCTGAAAGACTGGACAGAACATGCCAATCCCCTGTCATCATTAAAGAGGTGACTTGGCAAT  
 CTCCTGCTAAGCATGCAGGGGAGATACTAAAATTTCTGGGGAGGGAGGCTATCTGTCCAGACAGCCAAA  
 CTTGTCAGATGGAACCGTCTTGTCAATGAATCACAAATACAGACACCTCGGTGCTTAAAGTGTCTCCT  
 AGTTCTATCCTGAACTACACACTGAAGTTCAGTGTCTGCTTAATTCTGGGATTGCTTGTGTTTTCA  
 TCTTATCTGTCTTTTTGGGGCTGGTTTATTGCTCTTTGTCTTGAACCGCCGAAAGGGAGTGCCGAGCGT  
 TCCCAGGAATACCAACAACCTTAGACGTAAGCTCCTTTCAATTACAGTATGGGTCTTACAACACTGAGACT  
 CACGATAAAACAGACGGCCATGTCTACAACATATCCCCCACCTGTGGGTGAGATGTGCCAAAACCCCA  
 TCTACATGCAGAAGGAAGGAGACCCAGTAGCCTATTACCGAAACCTGCAAGAGTTCAGCTATAGCAACCT  
 GGAGGAGAAAAAGAAGAGCCAGCCACACCTGCTTACACAATAAGTGCCACTGAGCTGTAGAAAAGCAG  
 GCCACACCAAGAGAGCCTGAGCTGCTGTATCAAAATATTGCTGAGCGAGTCAAGGAACCTCCAGCGCAG  
 GCCTAGTCCACTATAACTTTTGTACCTTACCTAAAAGGCAAGTTGCCCCCTTCTATGAATCTCAGCGCCA  
 AAACCAAGACAGAATCAATAAAACCGTTTTATATGGAACCTCCAGGAAATGCTTTGTGGGCAGTAAAA  
 CCCAACCCCTTTACTGCAAGCTAAGCCGCAATCAGAACCAGGACTACCTCGAAGTCTGGAAAAACAAA  
 CTGCAATCAGTCAGCTG

**ACGCGT**ACGCGGCCGCTCGAGCAGAACTCATCTCAGAAGAGGATCTGGCAGCAATGATATCCTGGATT  
 ACAAGGATGACGACGATAAGGTTTAA

**Protein Sequence:**

>RC227421 protein sequence  
 Red=Cloning site Green=Tags(s)

XC\*AAFSSVC\*PWPGSYRQVAKLPKTFARSAVCAKKRKY\*ISTVRTKDLQQLACSSPPSIESISFFS  
 METS\*QDCIQTNLSITPTR\*LFT\*VTTGYRRSERGHSVA\*KLSKDCISTTSLRY\*GRTPS\*AWRAWSIS  
 RPTTITSVPSRLGHSANLTSSKCSS\*MTTFCFHCPAMCSALSC\*PT\*TSGGIG\*K\*CLLLASLNILEGSW  
 RFSWRKIHGIALVTYFLSRPG\*TP\*LFLWERLSVRLPLGCMGKT\*PS\*PGKTSVPEKVPVIVPVRGAAML  
 PTSKGCHLQ\*ILLSTQPLRKPAGRPK\*EIVQLPE\*LCQRTGKVLDPWCWTRPSLLCLSPVPAAVSAPLR  
 AQTMV\*M\*TAKKGSSLSILTCSPNRPVQRNST\*QGTIFKLSIRMTS\*NTVLWYCT\*ETTGLQSFVKVPL  
 QT\*PVYADFI\*MAITLKCCTLLCLMDCRACNISI\*SIMSLRKL\*PLML\*LTYSYCF\*TTTFFGPYLII  
 YLGGRP\*PG\*I\*ETTIFLTC\*KGFWISSRLSSR\*ICRRTPGTVPTSWG\*KTGQNPPIPLSSLMR\*LAN  
 LLLSMQGRY\*NFWGGRLSVQTAQTCQMEPSCQ\*ITIQTHLGRVCLLVPILNYTLKFHCLS\*FWDCLLFS  
 SYLSVLGLVYSSLS\*NAERECRAFPGIPTT\*T\*APFNYSMGLTTLRLTIKQTAMSTTISPHLWVRCAKTP  
 STCRRKETQ\*PITETCKSAIATWRRKKKSQPHELLTQ\*VPLSC\*KSRPHQESLSCCIKILLSERNFPAQ  
 A\*STITFVPLYKGSLLPLMNLDAKTKTESIKPFYMELPGNALWGSQNPTTLYCKLSRNQNRRTTSKFWKNK  
 LQSVS

TRTRPLEQKLISEEDLAANDILDYKDDDDKV

**Chromatograms:**

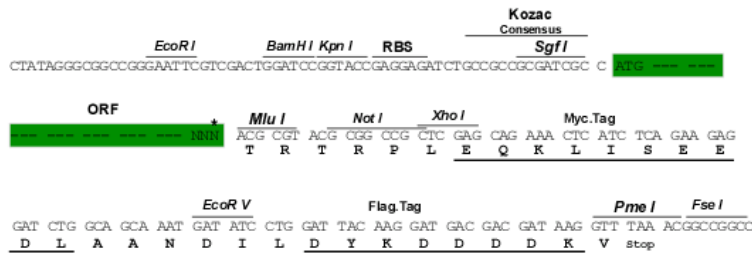
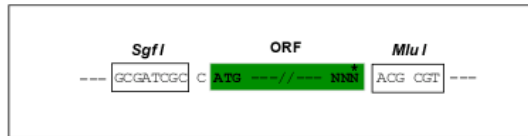
[https://cdn.origene.com/chromatograms/mg4079\\_e01.zip](https://cdn.origene.com/chromatograms/mg4079_e01.zip)

**Restriction Sites:**

SgfI-MluI

**Cloning Scheme:**

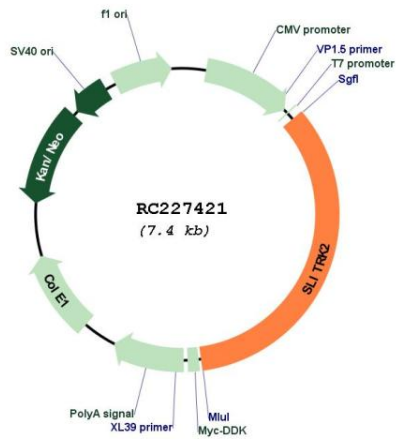
Cloning sites used for ORF Shuttling:



\* The last codon before the Stop codon of the ORF

<b>ACCN:</b>	NM_001144004
<b>ORF Size:</b>	2535 bp
<b>OTI Disclaimer:</b>	The molecular sequence of this clone aligns with the gene accession number as a point of reference only. However, individual transcript sequences of the same gene can differ through naturally occurring variations (e.g. polymorphisms), each with its own valid existence. This clone is substantially in agreement with the reference, but a complete review of all prevailing variants is recommended prior to use. <a href="#">More info</a>
<b>OTI Annotation:</b>	This clone was engineered to express the complete ORF with an expression tag. Expression varies depending on the nature of the gene.
<b>Components:</b>	The ORF clone is ion-exchange column purified and shipped in a 2D barcoded Matrix tube containing 10ug of transfection-ready, dried plasmid DNA (reconstitute with 100 ul of water).
<b>Reconstitution Method:</b>	<ol style="list-style-type: none"><li>1. Centrifuge at 5,000xg for 5min.</li><li>2. Carefully open the tube and add 100ul of sterile water to dissolve the DNA.</li><li>3. Close the tube and incubate for 10 minutes at room temperature.</li><li>4. Briefly vortex the tube and then do a quick spin (less than 5000xg) to concentrate the liquid at the bottom.</li><li>5. Store the suspended plasmid at -20°C. The DNA is stable for at least one year from date of shipping when stored at -20°C.</li></ol>
<b>RefSeq:</b>	<a href="#">NM_001144004.3</a>
<b>RefSeq Size:</b>	3922 bp
<b>RefSeq ORF:</b>	2538 bp
<b>Locus ID:</b>	84631
<b>UniProt ID:</b>	<a href="#">Q9H156</a>
<b>Cytogenetics:</b>	Xq27.3
<b>Protein Families:</b>	Transmembrane
<b>MW:</b>	95.4 kDa
<b>Gene Summary:</b>	This gene encodes an integral membrane protein that contains two N-terminal leucine-rich repeats domains and contains C-terminal regions similar to neurotrophin receptors. The encoded protein may play a role in modulating neurite activity. Alternatively spliced transcript variants encoding the same protein have been described.[provided by RefSeq, Feb 2010]

Product images:



Circular map for RC227421