

Product datasheet for **RC227417**

SH2D4B (NM_001145719) Human Tagged ORF Clone

Product data:

Product Type:	Expression Plasmids
Product Name:	SH2D4B (NM_001145719) Human Tagged ORF Clone
Tag:	Myc-DDK
Symbol:	SH2D4B
Mammalian Cell Selection:	Neomycin
Vector:	pCMV6-Entry (PS100001)
E. coli Selection:	Kanamycin (25 ug/mL)
ORF Nucleotide Sequence:	>RC227417 representing NM_001145719 Red=Cloning site Blue=ORF Green=Tags(s)

TTTTGTAATACGACTCACTATAGGGCGCCGGGAATTCGTCGACTGGATCCGGTACCGAGGAGATCTGCC
GCC**CGATCGCC**

ATGTTGCCAGAGGACTCAGGAGGCTCTCCAGATGCTGCAGCGAGTGACAAGCACATCCAATGGCTCCTAG
GGGCAGATGGCGAGGTCTGGTCTGGATCATGGGAGAAGGCCCTGGTGACAAGCCCTACGAAGAGATCTC
TGAGGAGCTGATTGCAGAGAGGGCGGGCTGCAGGCACAGAGGGAAGCTGAGGAGCTCTGGAGACAGAAG
GAGGCAGAGATCACCAAGAAGTTCGGGATGCTCTGGCCAATGAGAAAGCCCGGATCTTGCGGAGAAGT
GGAAAGTGGAGATGGAAGACCGCAAGGCTGCCAAAGTCTGGAGGAACGCATCCACGAGGAATTCGAAG
GAAAGAGGAAGAGGAGAGGAAGCGAGGAGAAGAGCAGATTCGCCTCCAGGAAGAGCAGAGGGCGAAGGAG
CTCTACTGGACCCTGAAGCAGGCTCAGCTGCATTGCCAAGCCAGTGAGAAAGAGGAGCGAGAGTGGGAAG
AACAGTTGCGCCGGTCCAAGGCGGCTGATGAGGAGAGGAGCCGCGAGCCAGCGCGCCGGGACGAGTA
CCGACACCACTCGCTCCGTGCTATCCAGAAGGGCACGGTCGCTGGCCTCAGCTCCATGTTCCGGGAGCTT
GGCCAGAGCCATGAGCAGGAGGCAAGACTCTACCACCCTCCCCGACCCGGTCTGCCGAGCCCTTG
CCCTGCCGGT CAGCAGGACCTGGGAGCGCCGCTGCGCCAGTCTCCAGAGATGCATCGTCCGCTGGTT
TAAGGAGGAGCAGCTGCCTCGCCGAGCTGGCTTCGAGAGGAACACCAAGTTCATCGCCCCCTGGTCCAT
GGAGGAAATTACTACTGTTTCAGGAGGAGGTTACTTCAGGAACCCTGCGGACAGAGGGACAGCCACCA
GACTACCATCTGTTGTT

ACGCGTACGCGGCCGCTCGAGCAGAAACTCATCTCAGAAGAGGATCTGGCAGCAAATGATATCCTGGATT
ACAAGGATGACGACGATAAGGTTTAA



Protein Sequence: >RC227417 representing NM_001145719
Red=Cloning site Green=Tags(s)

MLPEDSGGSPDAAASDKHIQWLLGADGEVWVWIMGEGPGDKPYEEISEELIAERARLQAQREAEELWRQK
 EAEITKKFRDALANEKARILAEKWKVEMEDRKAALKVLEERIHEEFKRKEEEERKRGEEQIRLQEEQRAKE
 LYWTLKQQLHQCQASEKEEREWEEQLRRSKAADEERSRRAQARDEYRHHSRLRAIQKGTVAGLSSMFREL
 GQSHEQEARELYHHLDPDGLPQPLALPVSRTWERPLRPVSRDVIVRWFKEEQQLPRRAGFERNTKFIAPWFH
 GGNHYCFRRRVTSGTLRTEGQPTRLPSVV

TRTRPLEQKLISEEDLAANDILDYKDDDDKV

Chromatograms: https://cdn.origene.com/chromatograms/mk8051_a05.zip

Restriction Sites: Sgfl-MluI

Cloning Scheme:

Cloning sites used for ORF Shuttling:



* The last codon before the Stop codon of the ORF

ACCN: NM_001145719

ORF Size: 927 bp

OTI Disclaimer: The molecular sequence of this clone aligns with the gene accession number as a point of reference only. However, individual transcript sequences of the same gene can differ through naturally occurring variations (e.g. polymorphisms), each with its own valid existence. This clone is substantially in agreement with the reference, but a complete review of all prevailing variants is recommended prior to use. [More info](#)

OTI Annotation: This clone was engineered to express the complete ORF with an expression tag. Expression varies depending on the nature of the gene.

Components: The ORF clone is ion-exchange column purified and shipped in a 2D barcoded Matrix tube containing 10ug of transfection-ready, dried plasmid DNA (reconstitute with 100 ul of water).

Reconstitution Method:

1. Centrifuge at 5,000xg for 5min.
2. Carefully open the tube and add 100ul of sterile water to dissolve the DNA.
3. Close the tube and incubate for 10 minutes at room temperature.
4. Briefly vortex the tube and then do a quick spin (less than 5000xg) to concentrate the liquid at the bottom.
5. Store the suspended plasmid at -20°C. The DNA is stable for at least one year from date of shipping when stored at -20°C.

RefSeq: [NM_001145719.1](#), [NP_001139191.1](#)

RefSeq ORF: 930 bp

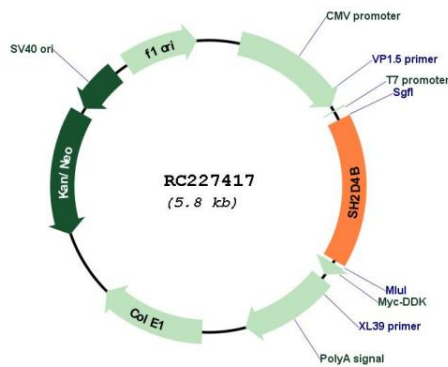
Locus ID: 387694

UniProt ID: [Q5SQS7](#)

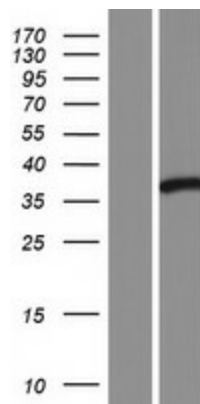
Cytogenetics: 10q23.1

MW: 36.3 kDa

Product images:



Circular map for RC227417



Western blot validation of overexpression lysate (Cat# [LY428983]) using anti-DDK antibody (Cat# [TA50011-100]). Left: Cell lysates from untransfected HEK293T cells; Right: Cell lysates from HEK293T cells transfected with RC227417 using transfection reagent MegaTran 2.0 (Cat# [TT210002]).