

Product datasheet for RC227412

CMPK1 (NM_001136140) Human Tagged ORF Clone

Product data:

Product Type: Expression Plasmids
Product Name: CMPK1 (NM_001136140) Human Tagged ORF Clone
Tag: Myc-DDK
Symbol: CMPK1
Synonyms: CK; CMK; CMPK; UMK; UMP-CMPK; UMPK
Mammalian Cell Selection: Neomycin
Vector: pCMV6-Entry (PS100001)
E. coli Selection: Kanamycin (25 ug/mL)
ORF Nucleotide Sequence: >RC227412 representing NM_001136140
Red=Cloning site Blue=ORF Green=Tags(s)

TTTTGTAATACGACTCACTATAGGGCGGCCGGAATTCGTCGACTGGATCCGGTACCGAGGAGATCTGCC
GCC**CGCATCGCC**

ATGCTGAGCCGCTGCCGAGCGGGCTGCTCCACGTCTGCGGCTTAGCTTCTGCTGCAGACCCGCCGGC
CGATTCTCTGCTCTCCACGTCTCATGAAGCCGCTGGTCTGTTCTGCTCGGCCGCCCGCCGGC
CAAGGGGACCCAGTGCGCCGCATCGTCGAGGAAATGGATCAGACAATGGCTGCCAATGCTCAGAAGAAT
AAATTCTTGATTGATGGGTTTCCAAGAAATCAAGACAACCTTCAAGGATGGAACAAGACCATGGATGGGA
AGGCAGATGTATCTTTCGTTCTTTTTGACTGTAATAATGAGATTTGATTGAACGATGTCTTGAGAG
GGGAAAGAGTAGTGGTAGGAGTATGACAACAGAGAGAGCTTGGAAAAGAGAATTCAGACCTACCTTCAG
TCAACAAAGCCAATTATTGACTTATATGAAGAAATGGGGAAAGTCAAGAAAATAGATGCTTCTAAATCTG
TTGATGAAGTTTTGATGAAGTTGTGCAGATTTTTGACAAGGAAGGC

ACGCGTACGCGGCCGCTCGAGCAGAACTCATCTCAGAAGAGGATCTGGCAGCAAATGATATCCTGGATT
ACAAGGATGACGACGATAAGGTTTAA

Protein Sequence: >RC227412 representing NM_001136140
Red=Cloning site Green=Tags(s)
MLSRCRSGLLHVLGLSFLQTRRPILLCSPLMKPLVVFVLGGPGAGKGTQCARIVEEMDQTMAANAQKN
KFLIDGFPRNQDNLQGWNTMDGKADVSFVLFDCNNEICIERCLERKSSGRSDDNRESLEKRIQTYLQ
STKPIIDL YEEMGKVKIDASKSVDEFVDEVVQIFDKEG

TRTRPLEQKLISEEDLAANDILDYKDDDDKV

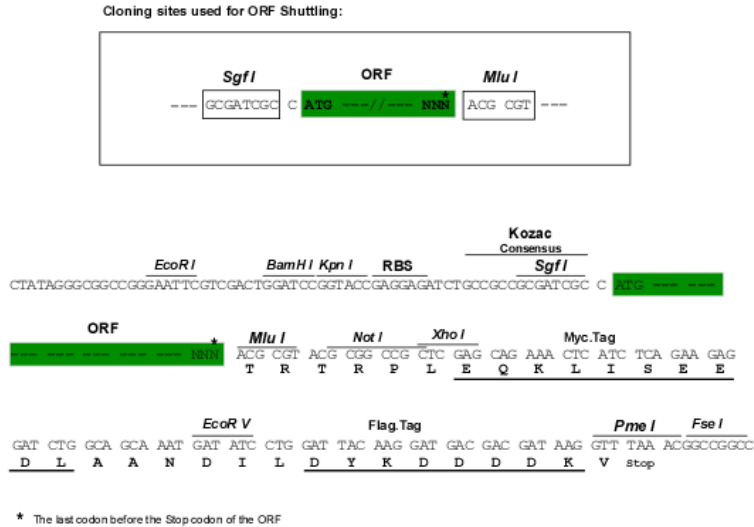
Chromatograms: https://cdn.origene.com/chromatograms/ja1462_e09.zip



[View online »](#)

Restriction Sites: SgfI-MluI

Cloning Scheme:



ACCN: NM_001136140

ORF Size: 537 bp

OTI Disclaimer: The molecular sequence of this clone aligns with the gene accession number as a point of reference only. However, individual transcript sequences of the same gene can differ through naturally occurring variations (e.g. polymorphisms), each with its own valid existence. This clone is substantially in agreement with the reference, but a complete review of all prevailing variants is recommended prior to use. [More info](#)

OTI Annotation: This clone was engineered to express the complete ORF with an expression tag. Expression varies depending on the nature of the gene.

Components: The ORF clone is ion-exchange column purified and shipped in a 2D barcoded Matrix tube containing 10ug of transfection-ready, dried plasmid DNA (reconstitute with 100 ul of water).

Reconstitution Method:

1. Centrifuge at 5,000xg for 5min.
2. Carefully open the tube and add 100ul of sterile water to dissolve the DNA.
3. Close the tube and incubate for 10 minutes at room temperature.
4. Briefly vortex the tube and then do a quick spin (less than 5000xg) to concentrate the liquid at the bottom.
5. Store the suspended plasmid at -20°C. The DNA is stable for at least one year from date of shipping when stored at -20°C.

RefSeq: [NM_001136140.2](#)

RefSeq ORF: 540 bp

Locus ID: 51727

UniProt ID: [P30085](#)

Cytogenetics: 1p33

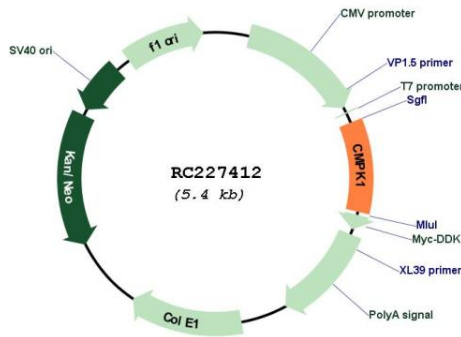
Protein Families: Druggable Genome

Protein Pathways: Metabolic pathways, Pyrimidine metabolism

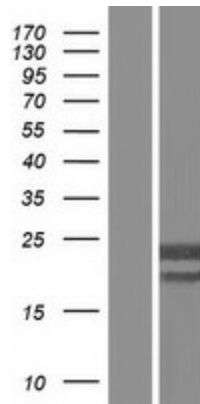
MW: 20 kDa

Gene Summary: This gene encodes one of the enzymes required for cellular nucleic acid biosynthesis. This enzyme catalyzes the transfer of a phosphate group from ATP to CMP, UMP, or dCMP, to form the corresponding diphosphate nucleotide. Alternate splicing results in both coding and non-coding transcript variants. [provided by RefSeq, Feb 2012]

Product images:



Circular map for RC227412



Western blot validation of overexpression lysate (Cat# [LY427824]) using anti-DDK antibody (Cat# [TA50011-100]). Left: Cell lysates from untransfected HEK293T cells; Right: Cell lysates from HEK293T cells transfected with RC227412 using transfection reagent MegaTran 2.0 (Cat# [TT210002]).