

Product datasheet for **RC227405**

CHID1 (NM_001142674) Human Tagged ORF Clone

Product data:

Product Type:	Expression Plasmids
Product Name:	CHID1 (NM_001142674) Human Tagged ORF Clone
Tag:	Myc-DDK
Symbol:	CHID1
Synonyms:	GL008; SI-CLP; SICLP
Mammalian Cell Selection:	Neomycin
Vector:	pCMV6-Entry (PS100001)
E. coli Selection:	Kanamycin (25 ug/mL)
ORF Nucleotide Sequence:	>RC227405 ORF sequence Red=Cloning site Blue=ORF Green=Tags(s)

TTTTGTAATACGACTCACTATAGGGCGGCCGGAATTCGTCGACTGGATCCGGTACCGAGGAGATCTGCC
GCC**CGATCGCC**

ATGCGGACACTCTTCAACCTCCTCTGGCTTGCCTGGCCTGCAGCCCTGTTCACTACCCTGTCAAAGT
CAGATGCCAAAAAGCCGCTCAAAGACGCTGCTGGAGAAGAGTCAGTTTTAGATAAGCCGGTGAAGA
CCGGGTTTGGTGGTACGGACCTCAAAGCTGAGAGTGTGGTTCTTGAGCATCGCAGCTACTGCTCGGCA
AAGGCCGGGACAGACACTTTGCTGGGGATGTACTGGGCTATGCTACTCCATGGAACAGCCATGGCTACG
ATGTCACCAAGGTCTTTGGGAGCAAGTTCACACAGATCTCACCCGCTGGCTGCAGCTGAAGAGACGTGG
CCGTGAGATGTTTGGAGTACGGGCTCCACGAGTGGACCAAGGGTGGATGCGAGCTGTCAGGAAGCAT
GCCAAGGGCTGCACATAGTGCCTCGGCTCCTGTTTGGAGACTGGACTTACGATGATTTCCGGAACGCTCT
TAGACAGTGAGGATGAGATAGAGGAGCTGAGCAAGACCGTGGTCCAGGTGGCAAAGAACCAGCATTTTCA
TGGCTTCTGGTGGAGGTCTGGAACCAGCTGCTAAGCCAGAAGCGGTGGGCTCATCCACATGCTCACC
CACTTGGCCGAGGCTCTGCACCAGGCCGGCTGCTGGCCCTCCTGGTTCATCCGCTGCCATCACCCCG
GGACCGACCAGCTGGGCATGTTACGCACAAGGAGTTTGGAGCAGCTGGCCCCGCTGGATGGTTTCAG
CCTCATGACCTACGACTACTCTACAGCGCATCAGCCTGGCCCTAATGCACCCCTGTCTGGGTTTCGAGCC
TGGCTCCAGGCTCTGGACCCGAAGTCCAAGTGGCGAAGCAAATCCTCCTGGGCTCAACTCTATGGTA
TGGACTACGCGACCTCCAAGGATGCCCGTGGAGCTGTTGTGGGGCCAGGTACATCCAGACACTGAAGGA
CCACAGGCCCGGATGGTGTGGGACAGCCAGGTCTCAGAGCACTTCTTCGAGTACAGAAGAGCCGAGT
GGGAGGCACGTCGTTCTACCCAACCCTGAAGTCCCTGCAGGTGCGGCTGGAGCTGGCCCGGAGCTGG
GCGTTGGGTCTCTATCTGGGAGCTGGGCCAGGGCCTGGACTACTCTACGACCTGCTC

ACGCGTACGCGGCCGCTCGAGCAGAACTCATCTCAGAAGAGGATCTGGCAGCAAATGATATCCTGGATT
ACAAGGATGACGACGATAAGGTTTAA



[View online »](#)

Protein Sequence: >RC227405 protein sequence
Red=Cloning site Green=Tags(s)

MRTLFNLLWLALACSPVHTTLSKSDAKKAASKTLLLEKSQFSDKPVQDRGLVVTDLKAESVLEHRSYCSA
 KARDRHFAGDVLGYVTPWNSHGVDVTKVFGSKFTQISPVWLQLKRRGEMFEVTGLHDVDQGWRAVRKH
 AKGLHIVPRLLFEDWTYDDFRNVLDSSEDEIEELSKTVVQVAKNQHFDFGVVEVWNQLLSQKRVGLIHMLT
 HLAELHQARLLALLVIPPAITPGTDQLGMFTHKEFEQLAPVLDGFSLMTYDYSTAHQPGPNAPLSWVRA
 CVQVLDPKSKWRSKILLGLNFYGM DYATSKDAREPVVGARYIQTLKDRPRMVWDSQVSEHFFEYKKSRS
 GRHVVFYPTLKS LQVRLELARELGVGVSIWELGQGLDYFYDLL

TRTRPLEQKLISEEDLAANDILDYKDDDDKV

Chromatograms: https://cdn.origene.com/chromatograms/mk6002_b01.zip

Restriction Sites: SgfI-MluI

Cloning Scheme:



* The last codon before the Stop codon of the ORF

ACCN: NM_001142674

ORF Size: 1179 bp

OTI Disclaimer: The molecular sequence of this clone aligns with the gene accession number as a point of reference only. However, individual transcript sequences of the same gene can differ through naturally occurring variations (e.g. polymorphisms), each with its own valid existence. This clone is substantially in agreement with the reference, but a complete review of all prevailing variants is recommended prior to use. [More info](#)

OTI Annotation: This clone was engineered to express the complete ORF with an expression tag. Expression varies depending on the nature of the gene.

Components: The ORF clone is ion-exchange column purified and shipped in a 2D barcoded Matrix tube containing 10ug of transfection-ready, dried plasmid DNA (reconstitute with 100 ul of water).

Reconstitution Method:

1. Centrifuge at 5,000xg for 5min.
2. Carefully open the tube and add 100ul of sterile water to dissolve the DNA.
3. Close the tube and incubate for 10 minutes at room temperature.
4. Briefly vortex the tube and then do a quick spin (less than 5000xg) to concentrate the liquid at the bottom.
5. Store the suspended plasmid at -20°C. The DNA is stable for at least one year from date of shipping when stored at -20°C.

RefSeq: [NM_001142674.1](#), [NP_001136146.1](#)

RefSeq Size: 3448 bp

RefSeq ORF: 1182 bp

Locus ID: 66005

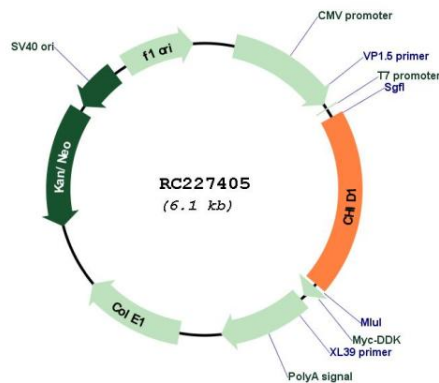
UniProt ID: [Q9BWS9](#)

Cytogenetics: 11p15.5

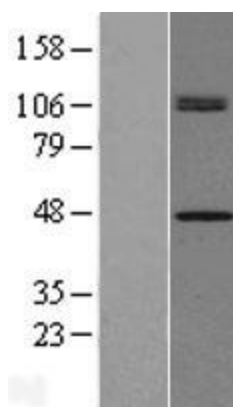
MW: 45 kDa

Gene Summary: Saccharide- and LPS-binding protein with possible roles in pathogen sensing and endotoxin neutralization. Ligand-binding specificity relates to the length of the oligosaccharides, with preference for chitotetraose (in vitro).[UniProtKB/Swiss-Prot Function]

Product images:



Circular map for RC227405



Western blot validation of overexpression lysate (Cat# [LY428238]) using anti-DDK antibody (Cat# [TA50011-100]). Left: Cell lysates from untransfected HEK293T cells; Right: Cell lysates from HEK293T cells transfected with RC227405 using transfection reagent MegaTran 2.0 (Cat# [TT210002]).